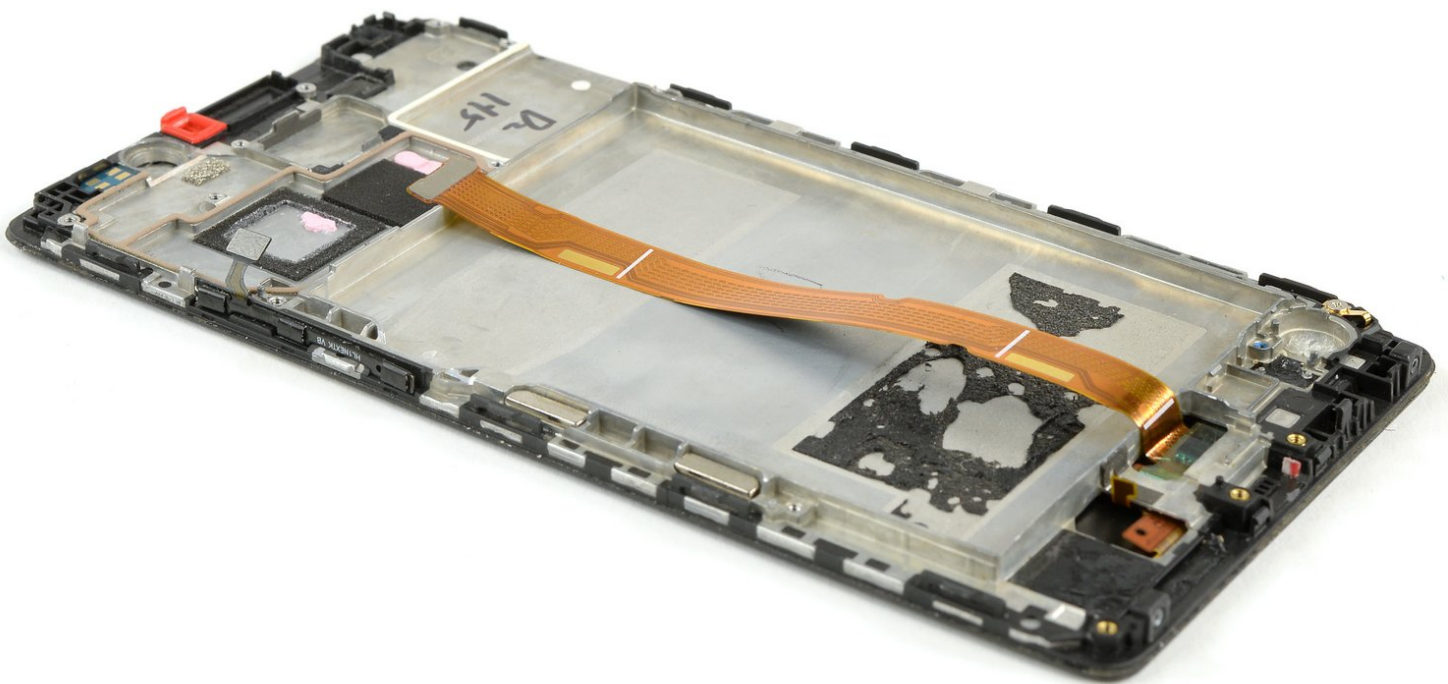




Huawei Mate 8 Display Replacement

Replace the broken display of your Huawei Mate 8 smartphone.

Written By: Dominik Schnabelrauch



INTRODUCTION

Use this guide to replace the defective display of your Huawei Mate 8.



TOOLS:

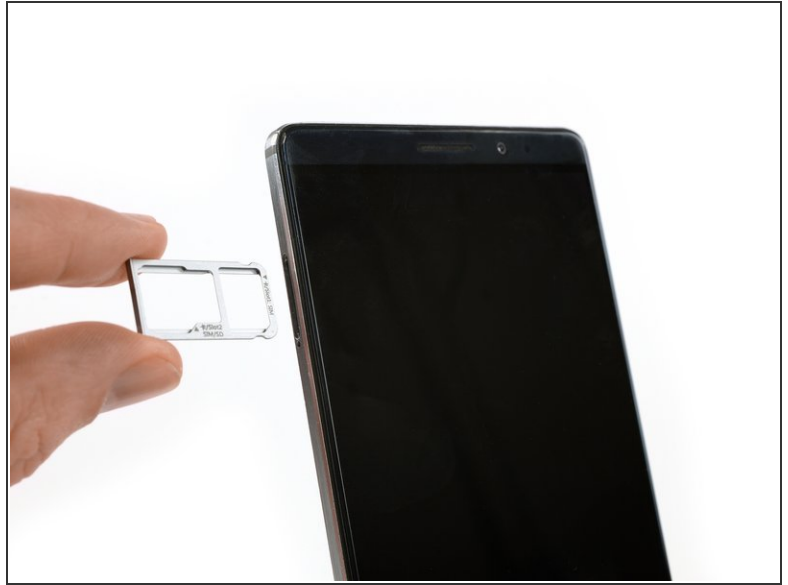
- [T2 Torx Screwdriver](#) (1)
- [iFixit Opening Picks set of 6](#) (1)
- [iOpener](#) (1)
- [Phillips #00 Screwdriver](#) (1)
- [Spudger](#) (1)
- [Suction Handle](#) (1)



PARTS:

- [Huawei Mate 8 Screen](#) (1)

Step 1 — Back Cover



- Switch off your phone and remove the SIM card tray.

Step 2



- Remove the Torx T2 screws from the bottom of the phone

Step 3



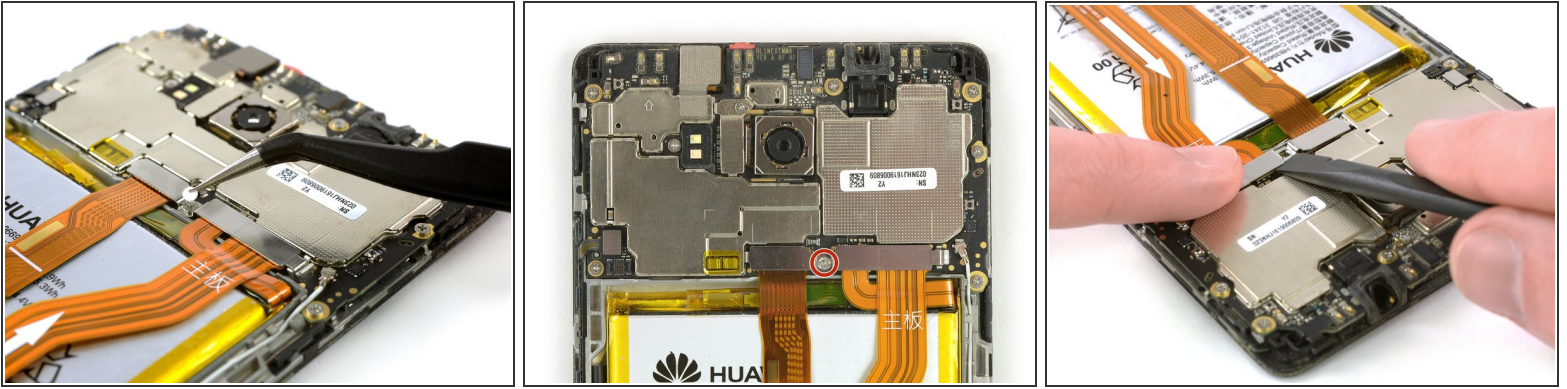
- Use an iSclack or a suction handle in the bottom area of your phone to separate the display unit from the rear panel.

Step 4



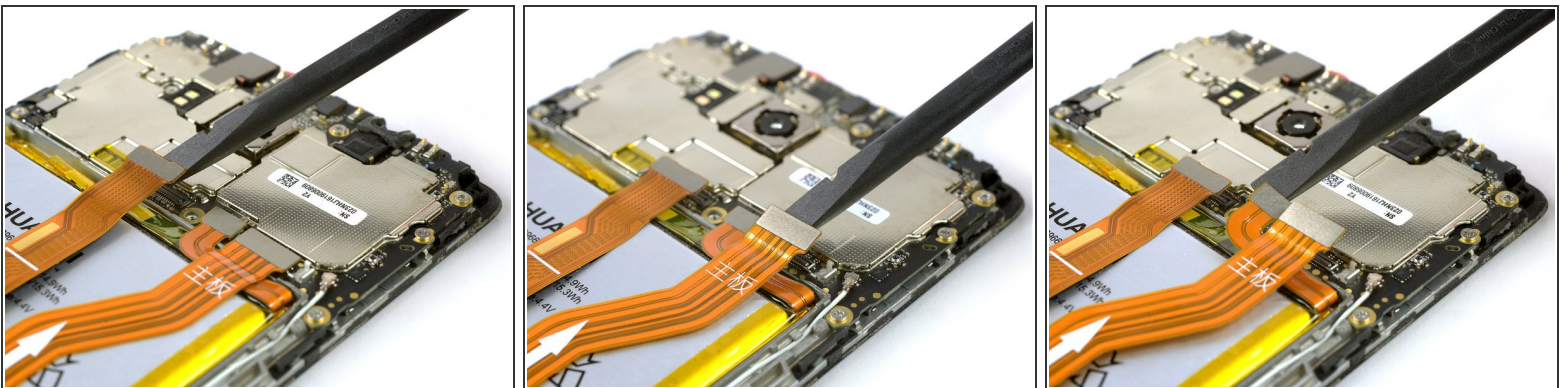
- Use an opening pick to fully separate the clips, releasing the phone.
 - ⚠ Do not fully remove the rear case. The fingerprint sensor cable is still connected to the back cover.
- Open the phone like a book from the SIM tray side.
- Use a spudger, to disconnect the fingerprint sensor cable.

Step 5 — Daughterboard interconnect cable



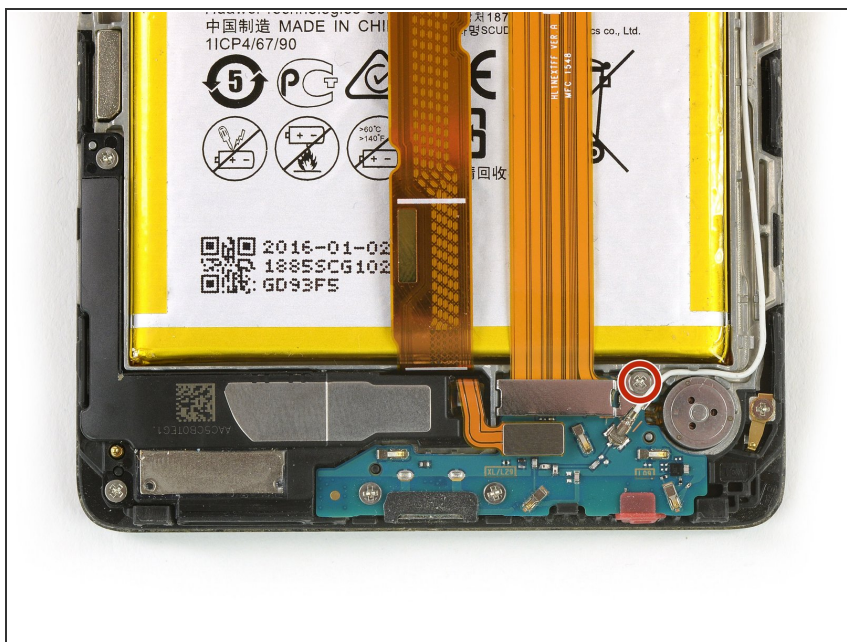
- Remove the liquid indicator sticker.
- Remove the Phillips #00 screw that holds down the metal shield.
- ⚠ The metal shield is tightly held in place. If you try to remove it without holding it down on one side, it'll break easily.
- Use a spudger to remove the metal shield.

Step 6



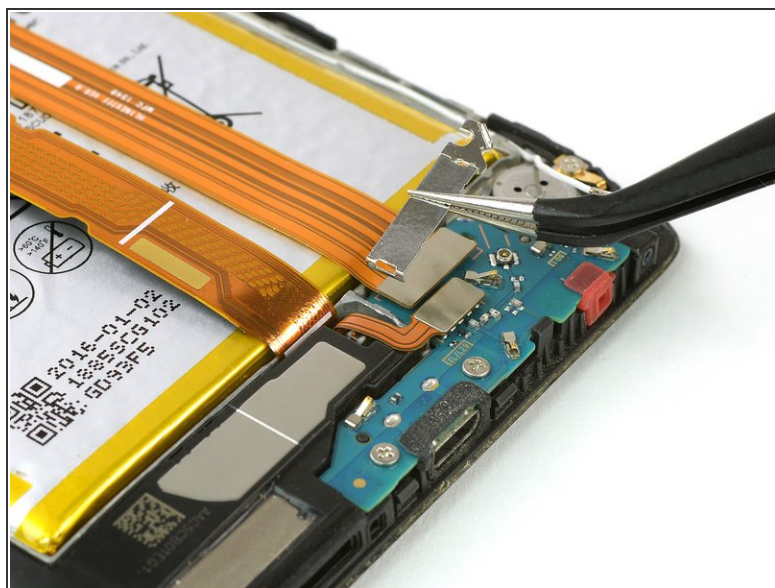
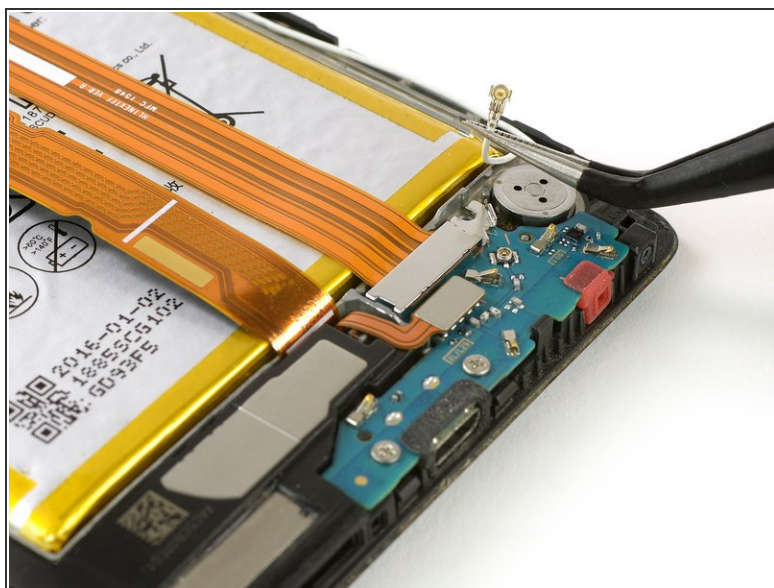
- Use the flat end of a spudger to disconnect the display, daughterboard interconnect, and battery cables.

Step 7



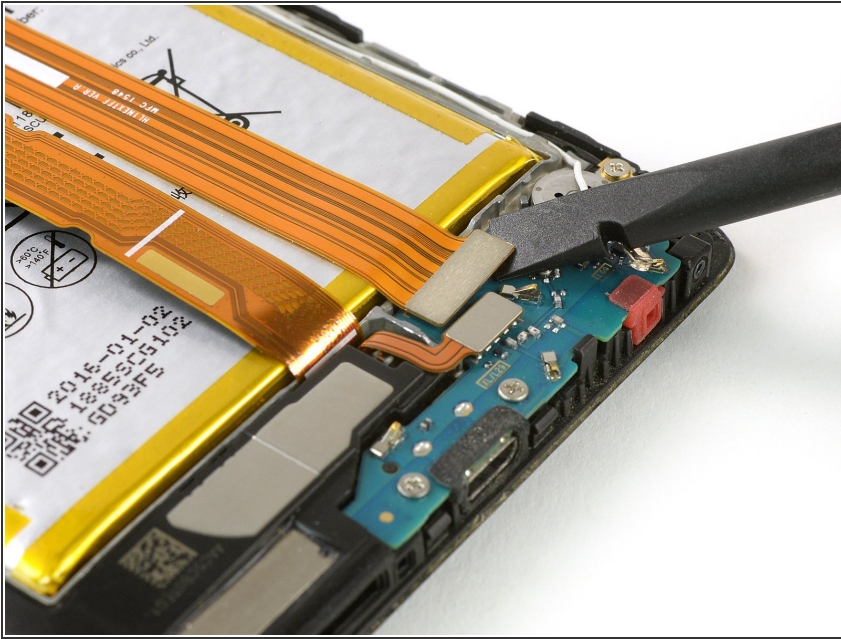
- Remove the Phillips #00 screw that holds down the interconnect cable bracket.

Step 8



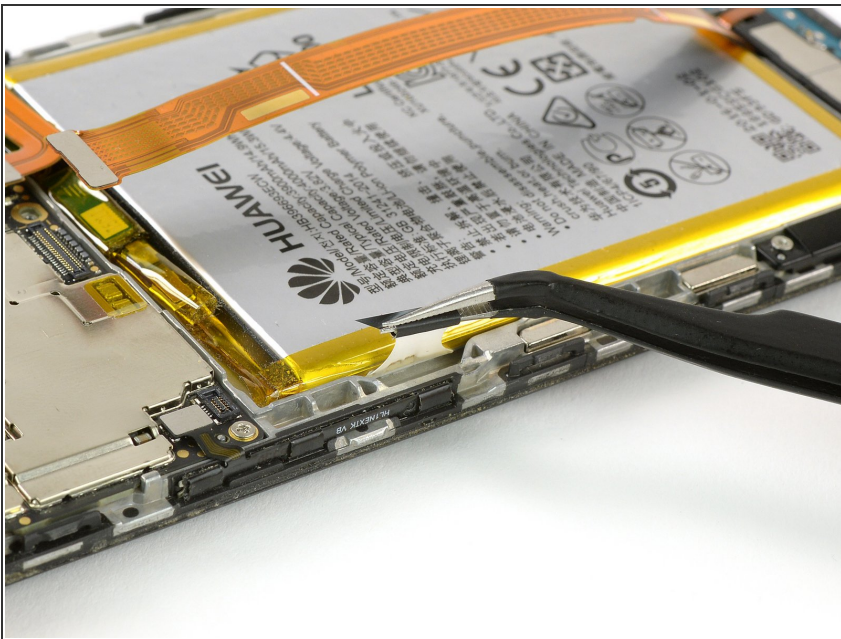
- Lift the coaxial connector off of its socket to allow access to the daughterboard interconnect cable bracket.
- Remove the bracket.

Step 9



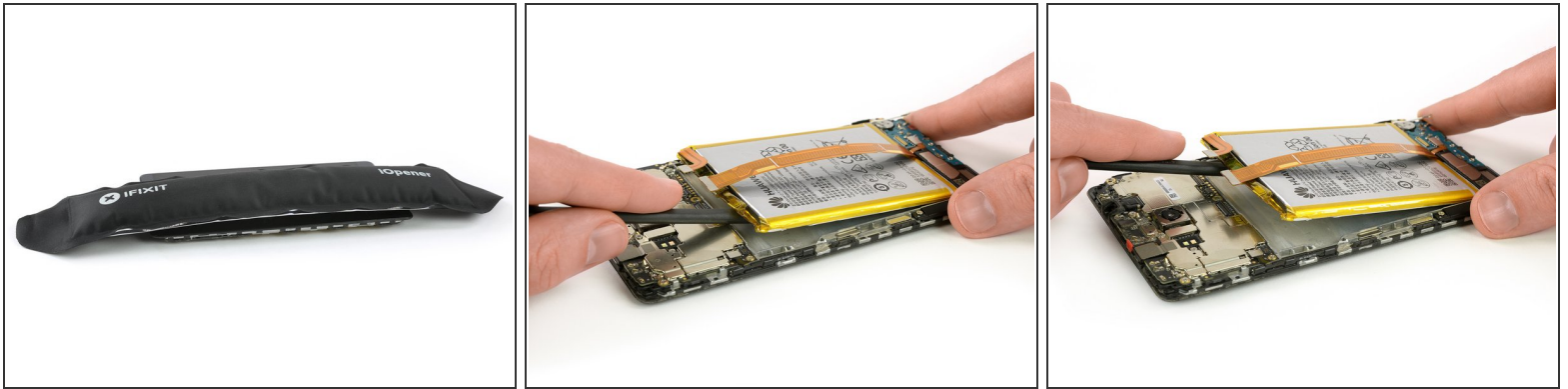
- Use a spudger to disconnect the interconnect cable.
- Remove the interconnect cable.


Step 10 — Battery



- ① The battery is glued in place with two adhesive strips. One with a pull tab and one without.
- Get a good grip on the pull tab near the power button and peel out the adhesive strip by steadily pulling at the tab in a flat angle.
- ① If the adhesive strip rips, grab and twist it around the tweezer tips a couple of times and then continue.

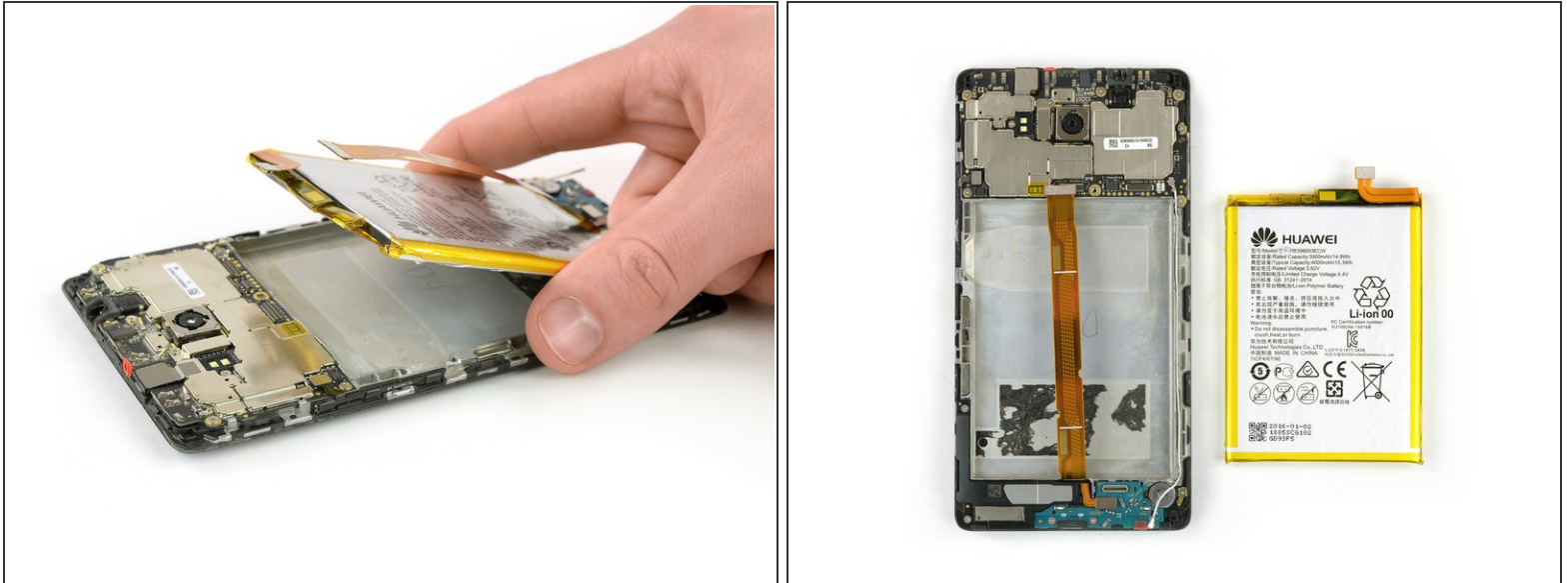
Step 11



 Do not bend or puncture the battery, damage to the cell can cause battery fires.

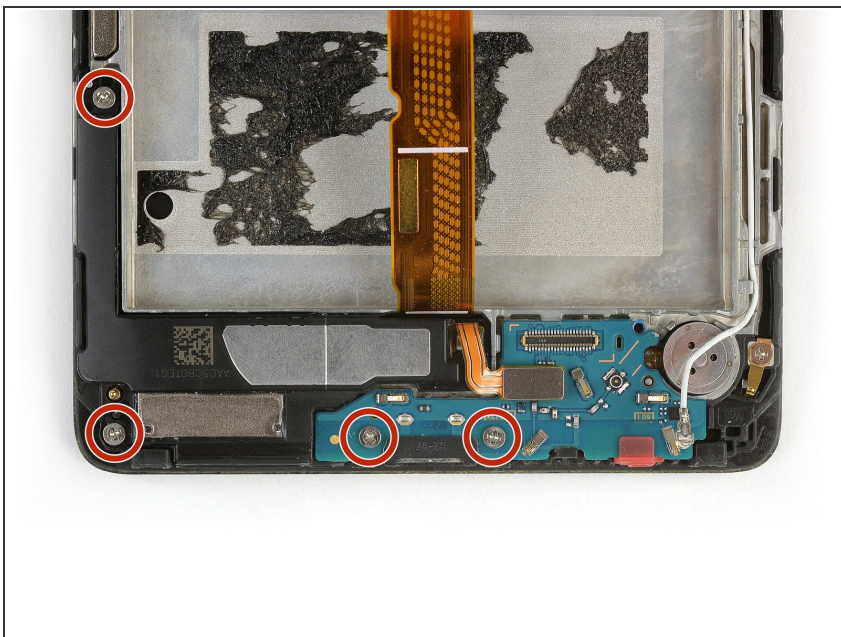
- [Heat an iOpener](#) and place it on the phone for about a minute to loosen the remaining adhesive.
- Carefully insert the flat end of a spudger to separate any remaining adhesive at the top of the battery.

Step 12



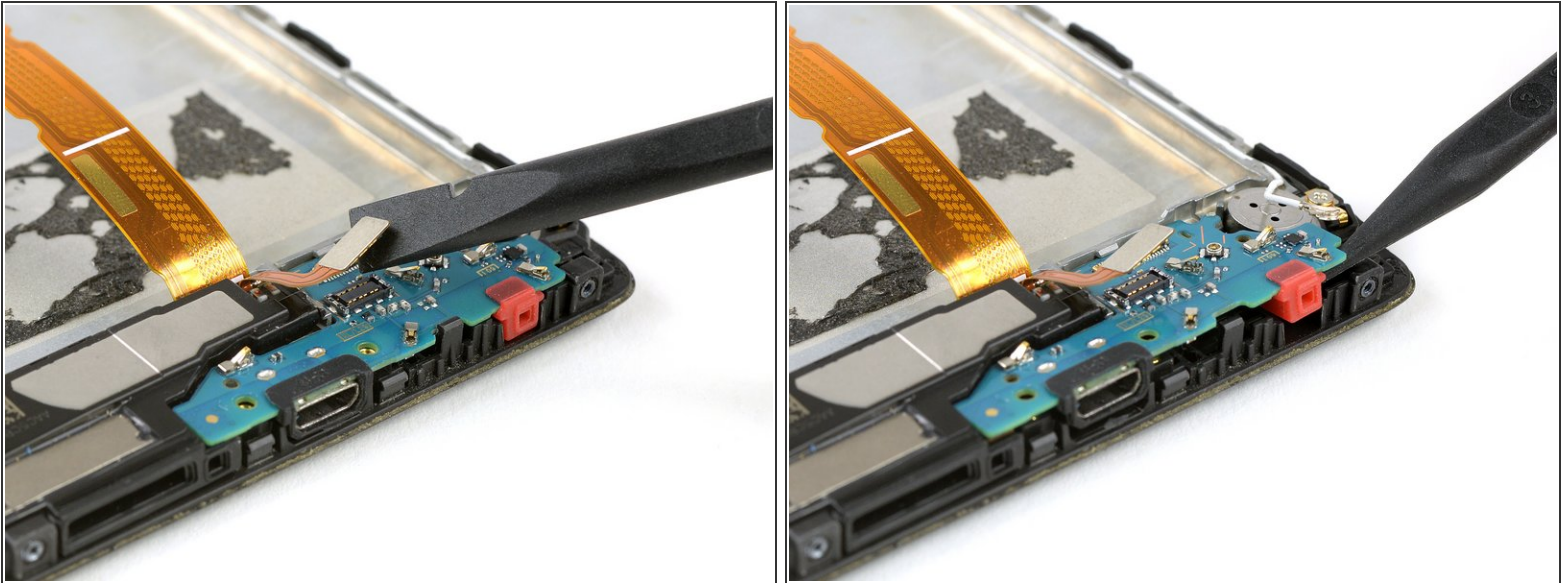
- Lift the top end of the battery to pull the battery off of the remaining adhesive strip.
- ☑ When reassembling your phone apply double sided adhesive tape or [pre-cut adhesive](#) to secure the new battery.
- ⚠ Never reinstall a battery that has been bent or damaged during removal.

Step 13 — Display



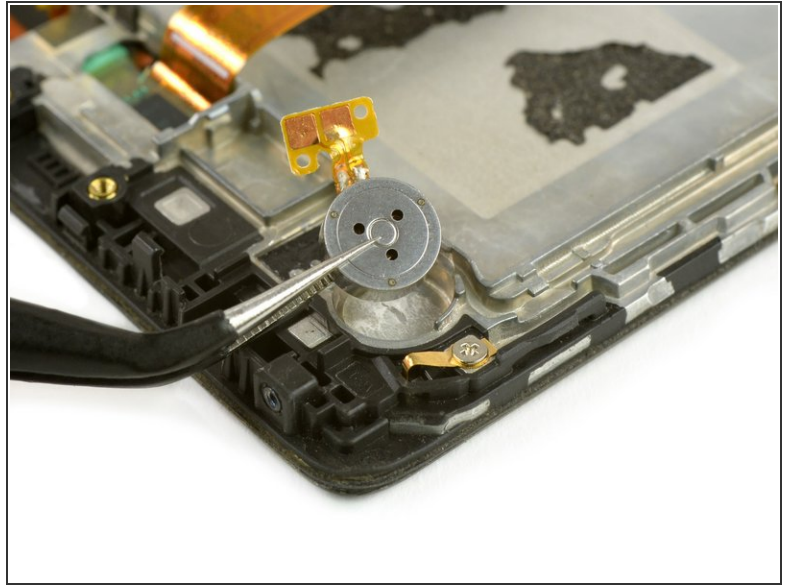
- Remove the four Phillips #00 screws holding the daughterboard and loudspeaker to the phone.

Step 14



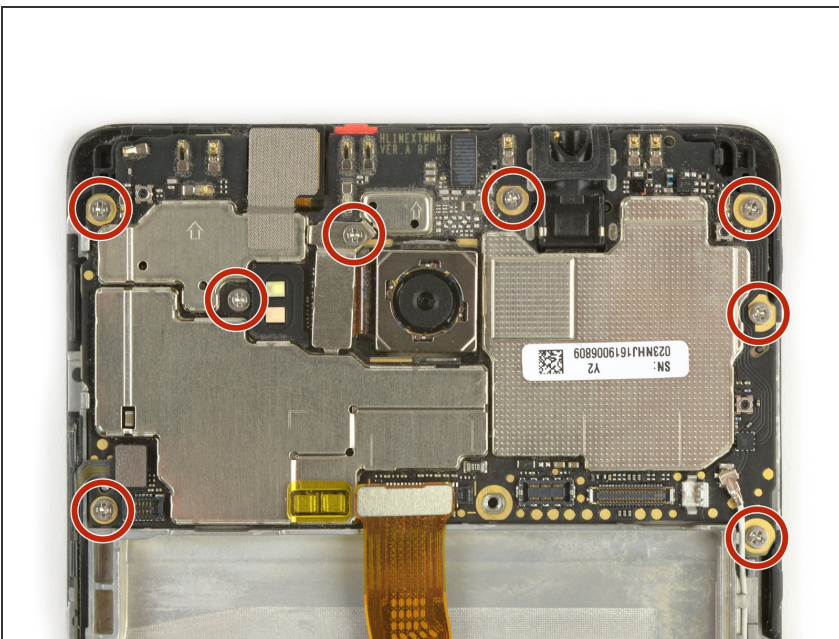
- Use the flat end of a spudger to disconnect the loudspeaker connector cable.
- Use the tip of a spudger to lift the daughterboard from the phone.

Step 15



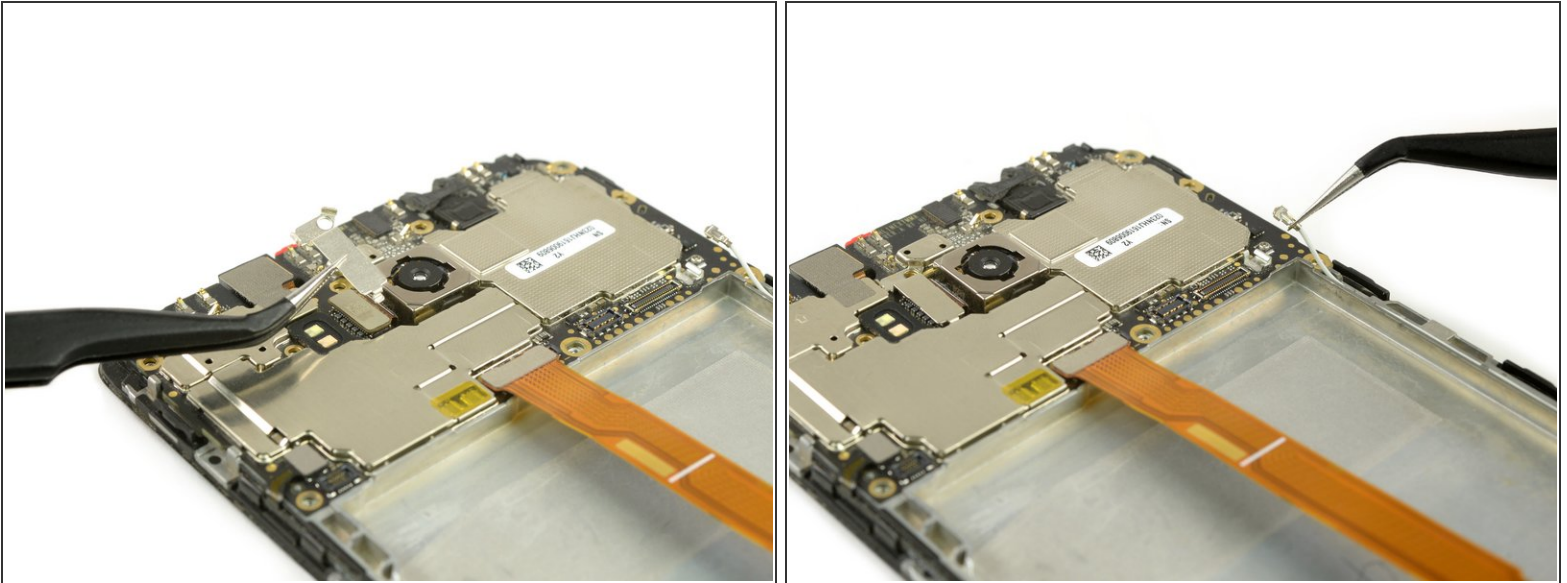
- Insert the flat end of a spudger under the loudspeaker at the gap on the left side.
- Work the spudger under the loudspeaker to separate it from the adhesive and remove the loudspeaker.
- Use tweezers to take the vibration unit out of its housing.

Step 16



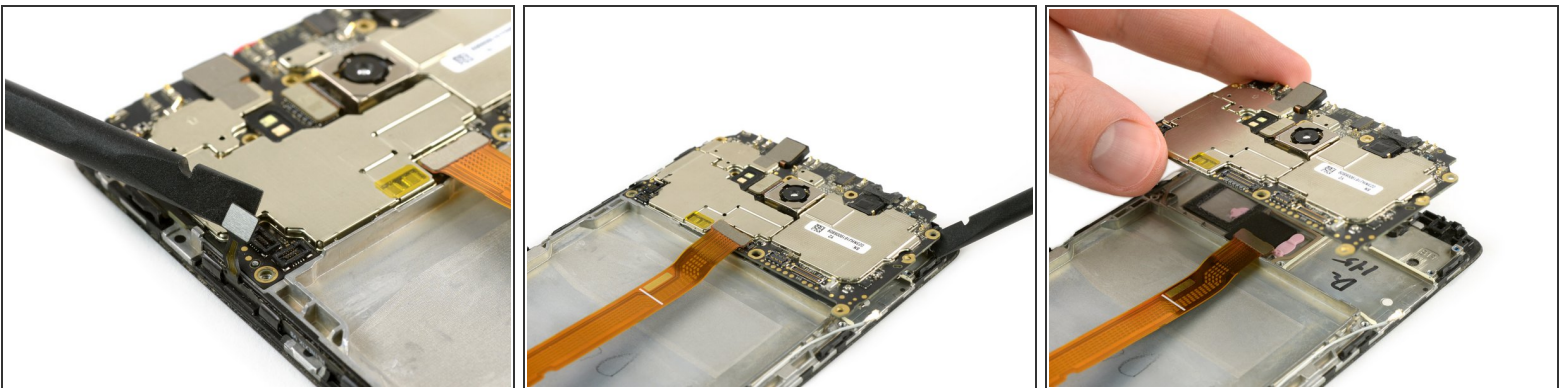
- Remove the eight Phillips #00 screws securing the motherboard to the phone.

Step 17



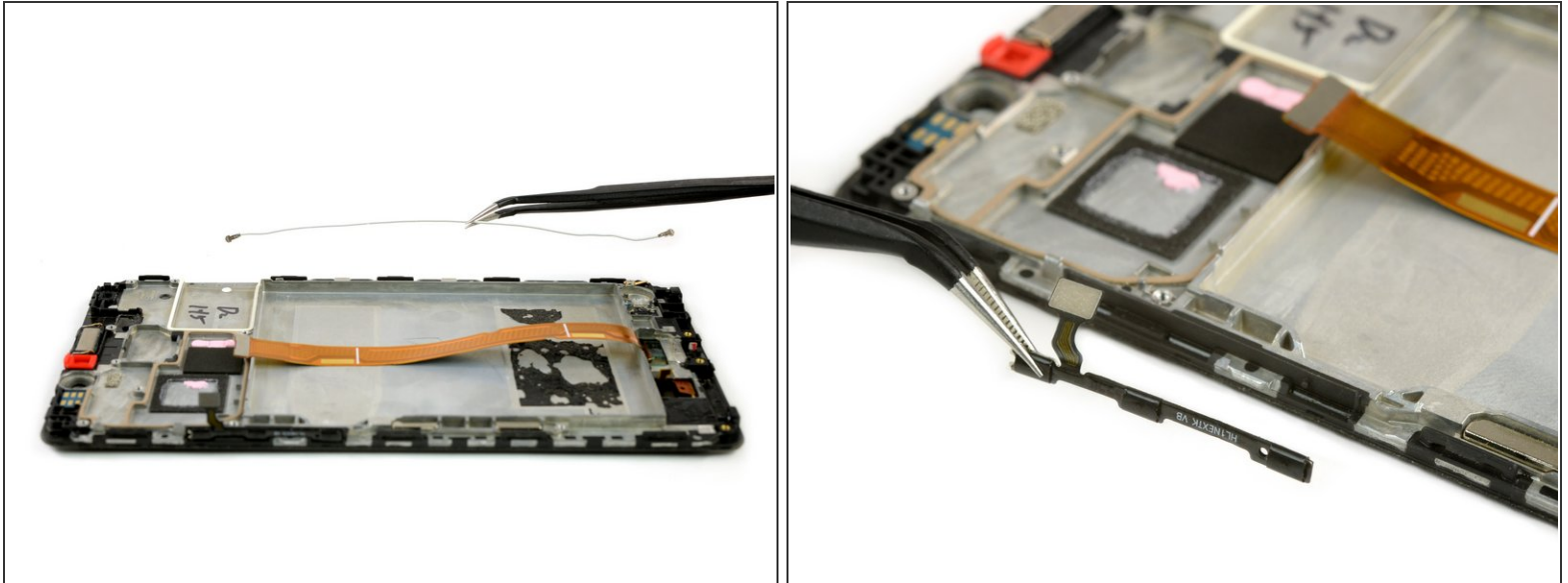
- Remove the bracket from the rear camera flex cable.
- Use tweezers to disconnect the antenna cable.

Step 18



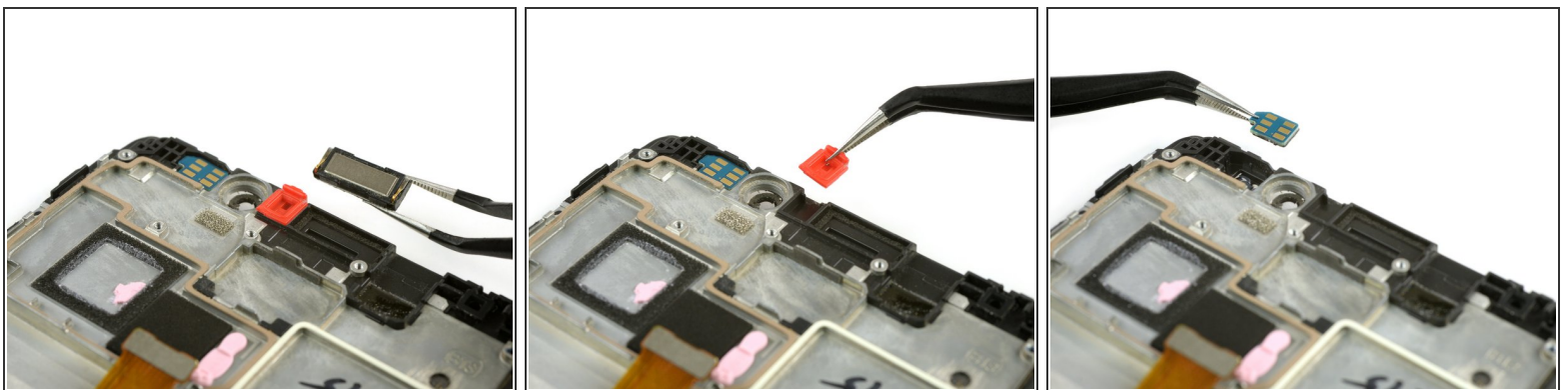
- Use the flat end of a spudger to disconnect the volume and power flex cable on the bottom left side of the mainboard.
- Work the flat end of a spudger under the top right side of the mainboard to pry it out.
- Remove the mainboard.

Step 19



- Remove the antenna interconnect cable.
- Remove the power and volume switch assembly.

Step 20



- Use tweezers to remove the earpiece speaker.
- Remove the red rubber gasket.
- Remove the ambient light and proximity sensor.

To reassemble your device, follow these instructions in reverse order.

This document was generated on 2019-09-22 07:58:41 PM (MST).

