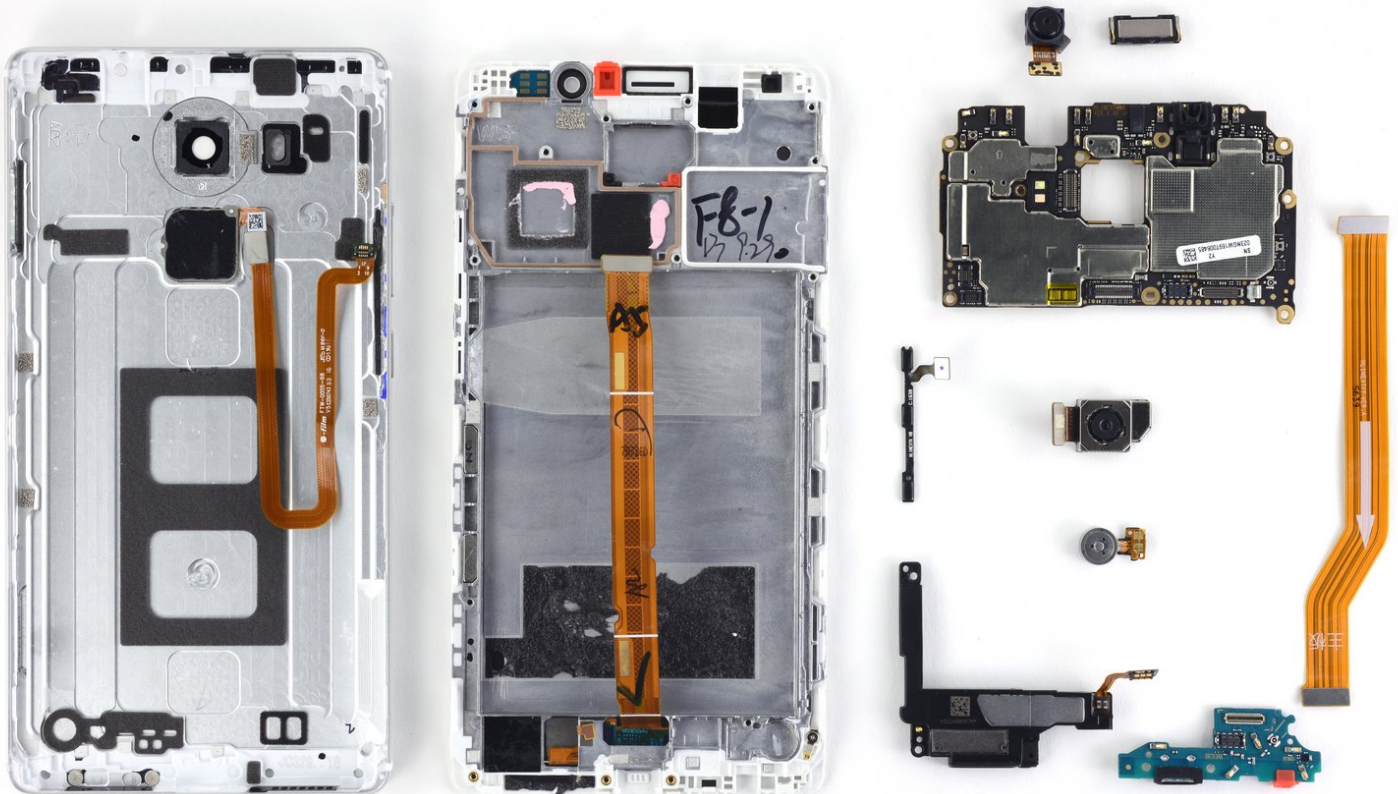




Huawei Mate 8 Repairability Assessment

Huawei Mate 8 repairability assessment performed on January 9, 2017.

Written By: Scott Havard



INTRODUCTION

The warranty will be voided with any battery replacement and the display is complicated to replace, therefore the Huawei Mate 8 earns a 6 out of 10 on the repairability scale.

TOOLS:

- [iSlack](#) (1)
 - [iFixit Opening Tool](#) (1)
 - [Tweezers](#) (1)
 - [Phillips #00 Screwdriver](#) (1)
 - [T2 Torx Screwdriver](#) (1)
 - [iFixit Opening Picks set of 6](#) (1)
-

Step 1 — Huawei Mate 8 Repairability Assessment



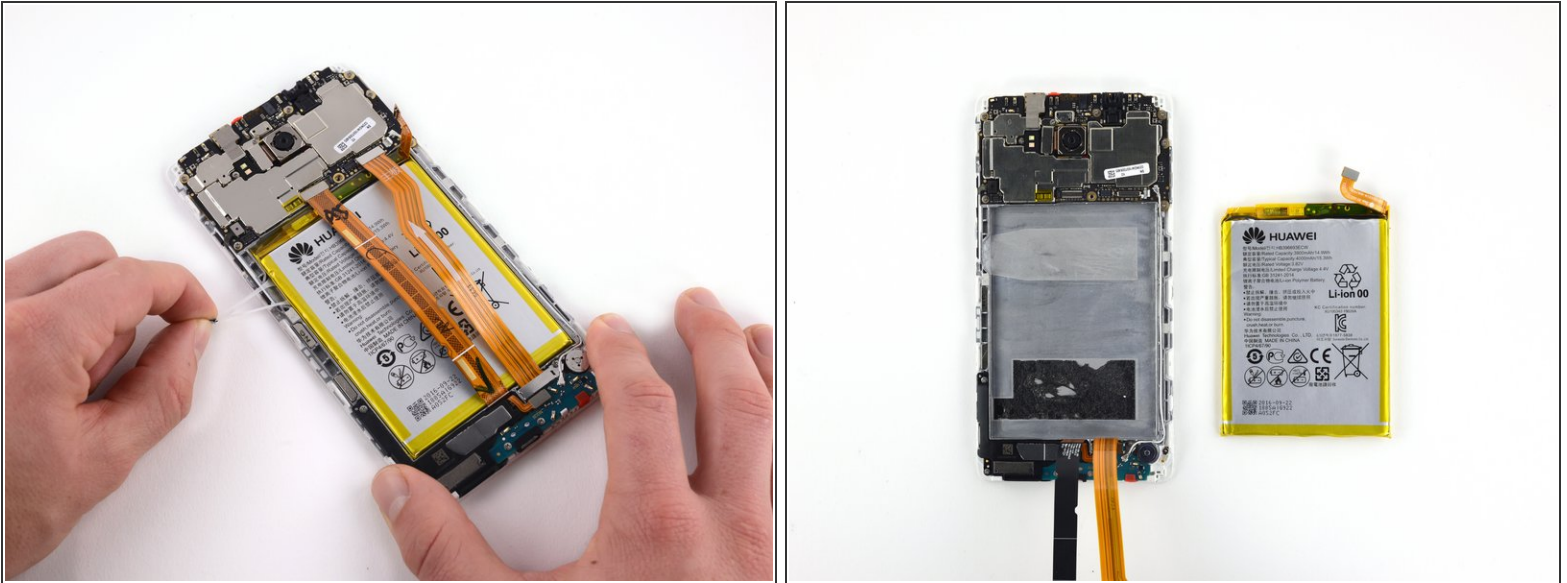
- Front and back reference shots.

Step 2



- T2 Torx screws secure the display assembly to the the rest of the phone body.
- Once the screws are removed, the display assembly is freed from the phone case by disengaging the clips on the perimeter of the phone.
- There is no glue holding the case together.

Step 3



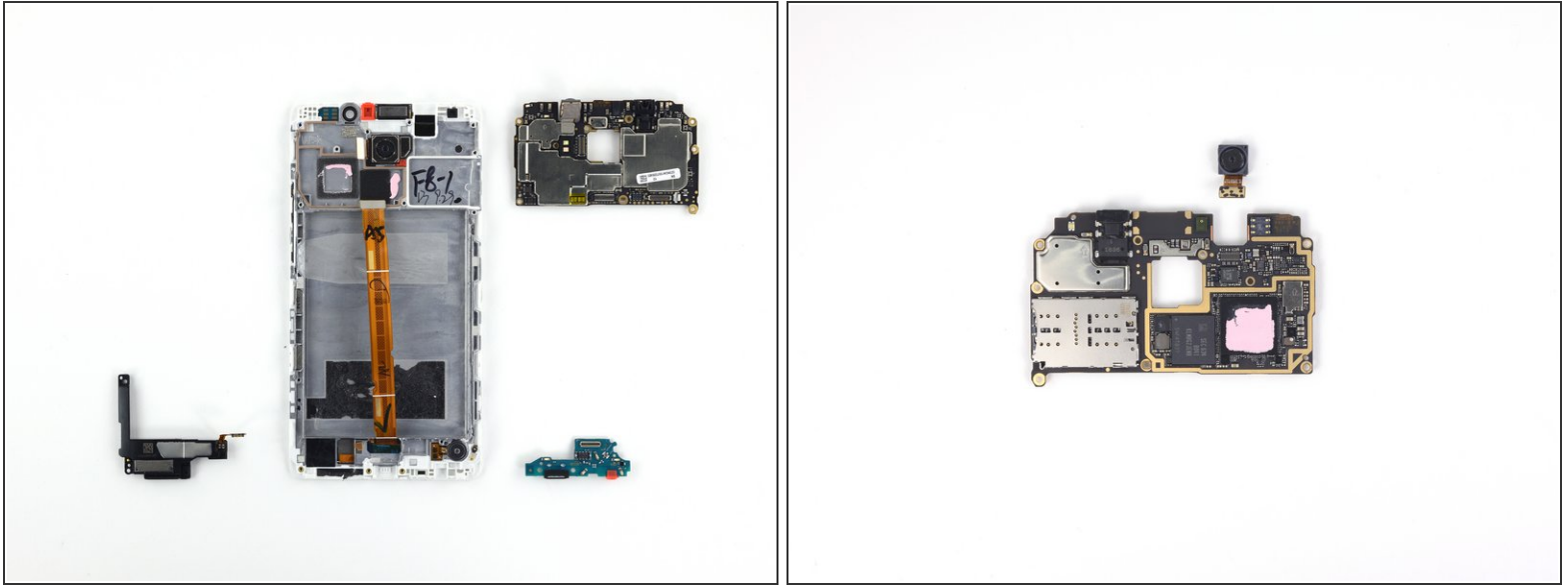
- There is a tamper evident sticker on the screw that holds the bracket securing the battery connectors.
- There is a pull tab that makes adhesive removal easier. These tabs can easily be torn though.
- In addition to the pull tab adhesive, the battery is also secured by adhesive near the bottom. This adhesive has no tab and requires heat and aggressive prying to separate.

Step 4



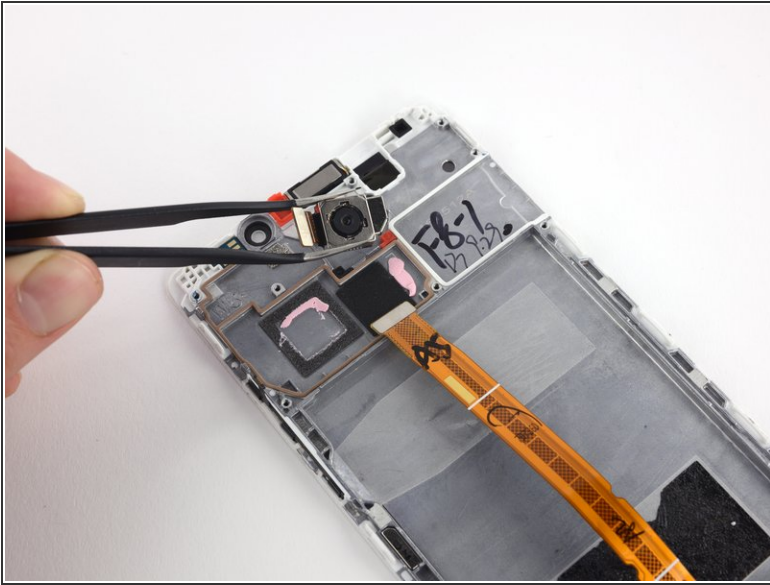
- The volume buttons are modular and attached to the rear case with little adhesive, making their removal easy.

Step 5



- Nine Phillips screws secure the motherboard to the rear case.
- Two Phillips screws secure the daughterboard to the rear case.
- Two Phillips screws and a small amount of adhesive hold the speaker to the rear case. Light prying is required after screw removal.
- The front-facing camera is held in place by pressure from the motherboard and by tabs in the rear case. It is easy to remove the camera after the motherboard is removed.

Step 6



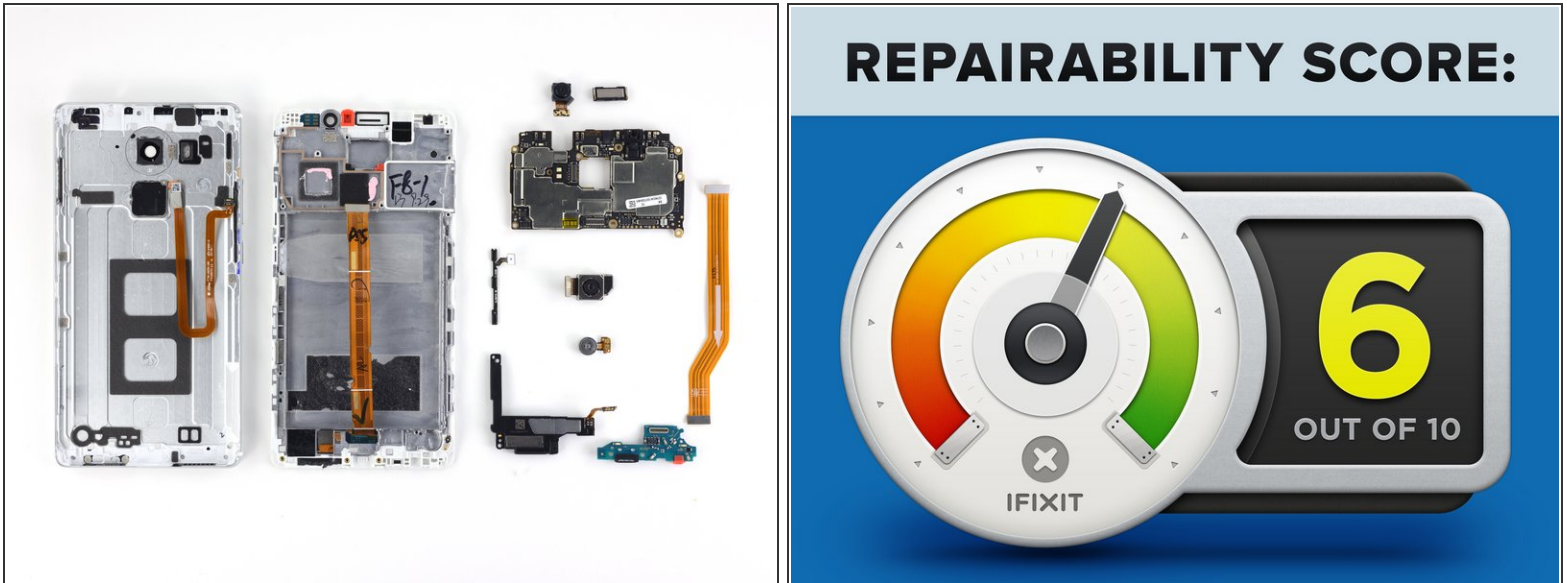
- The rear-facing camera is secured in place by the motherboard. It is easy to remove after the motherboard is removed.
- The earpiece speaker is held in place by light adhesive and can be removed by prying.
- The vibration motor is held in place by light adhesive and can be removed by prying.

Step 7



- The touch sensor on the rear case of the phone is attached with a large amount of adhesive. It is not possible to remove it without damaging the case and the touch sensor.

Step 8



- The Huawei Mate 8 earns a **6 out of 10** on our repairability scale (10 is the easiest to repair):
 - Many components are modular and can be individually replaced.
 - Opening the phone requires only a Torx screwdriver and a prying tool (No adhesive holding it together).
 - The battery does have a pull tab adhesive strip, but there is a second adhesive strip that does not have a tab.
 - A tamper evident sticker must be removed when disconnecting the battery.
 - LCD Display is integrated into the front case. While the replacement process is pretty straightforward, you'll still need to pick every component off the frame and likely pay more to replace this non-modular component.
 - Manufacturer does not provide user-accessible repair documentation.