



Huawei Mate 9 Display Assembly Replacement

This guide shows how to replace the display assembly of your Huawei Mate 9 smartphone.

Written By: Dominik Schnabelrauch



INTRODUCTION

Use this guide to replace the display with its frame of your Huawei Mate 9 smartphone.



TOOLS:

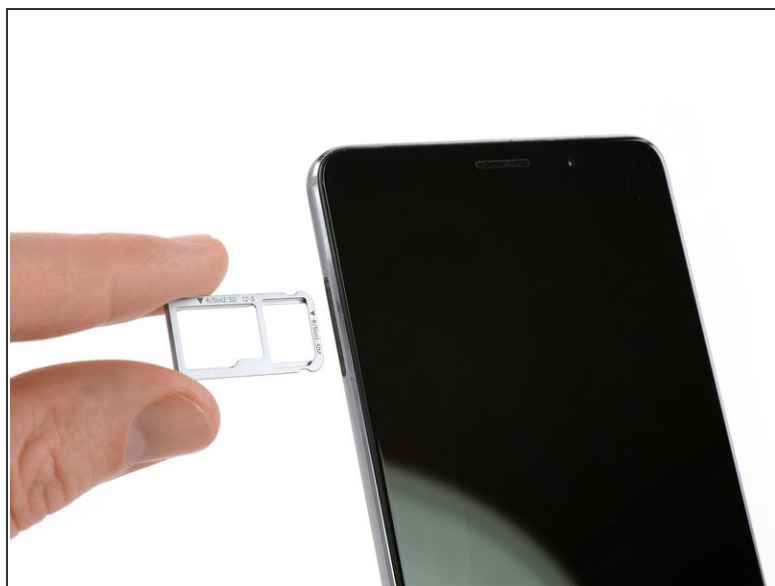
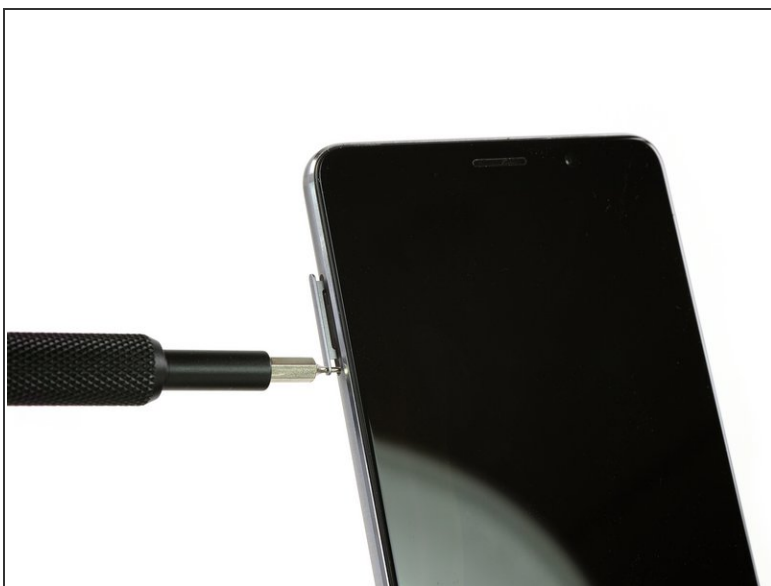
- [SIM Card Eject Tool](#) (1)
- [T2 Torx Screwdriver](#) (1)
- [iFixit Opening Tools](#) (1)
- [Spudger](#) (1)
- [Tweezers](#) (1)
- [Phillips #00 Screwdriver](#) (1)



PARTS:

- [Huawei Mate 9 Screen](#) (1)

Step 1 — Back Cover



- First switch off your phone and remove the SIM card tray.

Step 2



- Remove both screws on the bottom with a Torx T2 screwdriver.
 - Use a plastic opening tool to get between the display and the case. Open the smartphone by carefully prying out the display with all the parts out of the case.
- ⚠ Don't open the phone all the way, yet. The fingerprint sensor cable is still connected to the back cover.

Step 3



- Swing open the phone to the right side.
- Disconnect the fingerprint sensor cable with a spudger.

Step 4 — Battery



- Carefully peel off the plastic sticker that holds both cables to the battery.

Step 5



- Remove the water indicator sticker and the Phillips #00 screw beneath it, that holds the cable bracket in its place.

Step 6



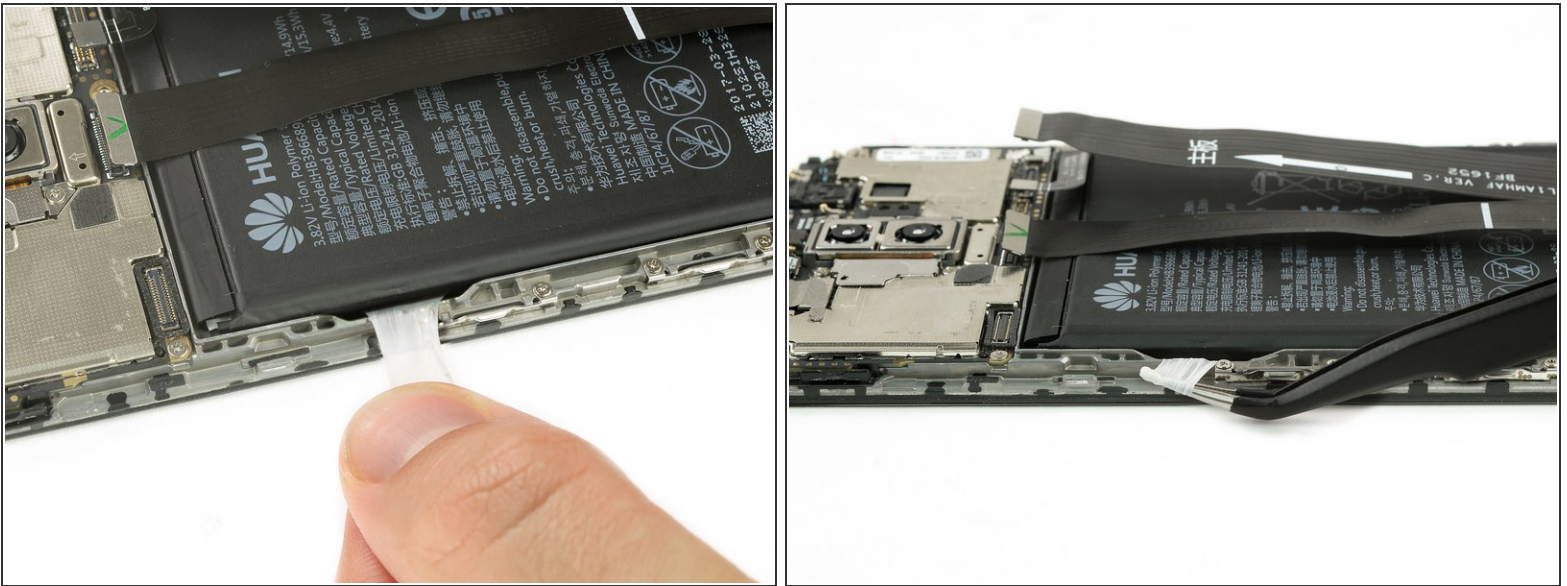
- Remove the cable bracket.

Step 7



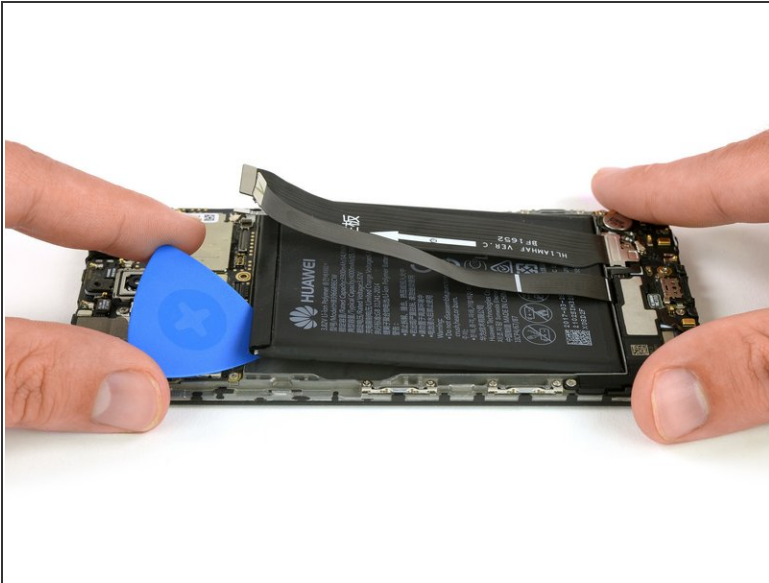
- Use a spudger to disconnect the interconnect, the battery and the display flex cable.


Step 8



- Peel out the adhesive strip which is placed beneath the battery by steadily pulling at the tab in a flat angle.
- ❗ If the adhesive strip breaks, grab and twist it around tweezer tips a couple of times and then continue.

Step 9



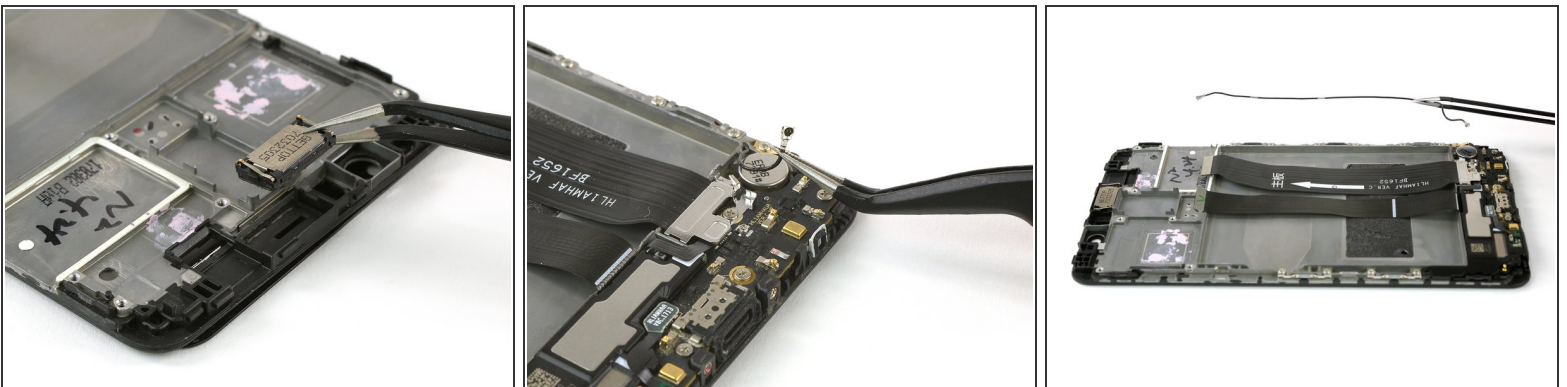
- If the battery is not freed, use an opening pick to pry under the battery, freeing it from the remaining adhesive.
 - Remove the battery.
- ☒ When reassembling your phone replace old adhesive with [double-sided tape](#) or [pre-cut adhesive strips](#).
-  Never reinstall a battery that has been bent or damaged during removal.

Step 10 — Display Assembly



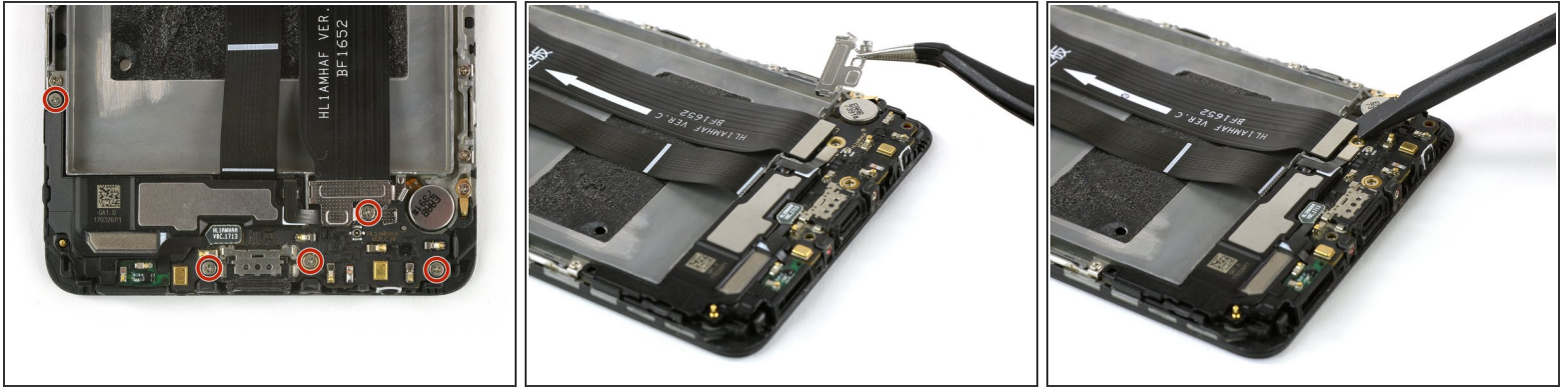
- Remove the eight Phillips #00 screws that hold the motherboard in its place.
- Unplug the antenna cable with a tweezer.
- ⚠ After you removed all screws there are still small clamps which hold the motherboard in its place. Don't break them while removing it but press them a little bit to the side to make the removal easier.
- Use a spudger to carefully lift up the motherboard including all components holding onto it and remove it.

Step 11



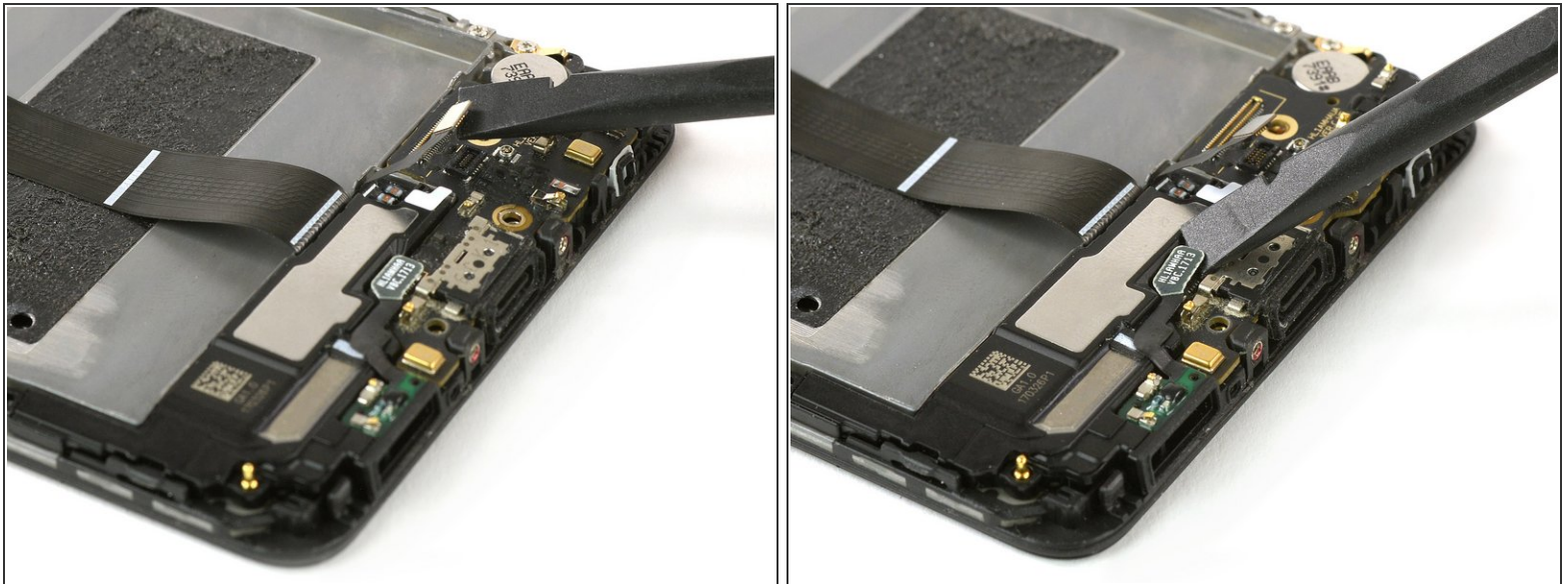
- Remove the earpiece speaker by levering it up from the side.
- ⚠ Take care not to bend the metal connectors.
- Disconnect the antenna cable and remove it carefully.

Step 12



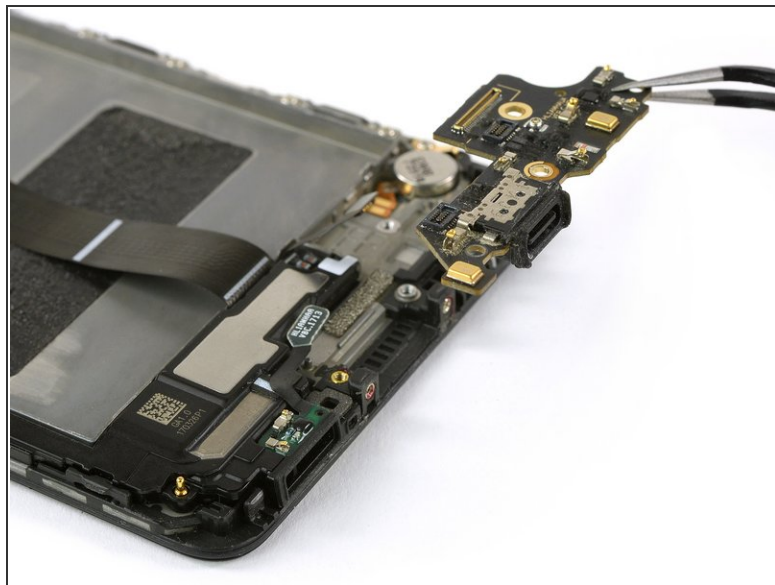
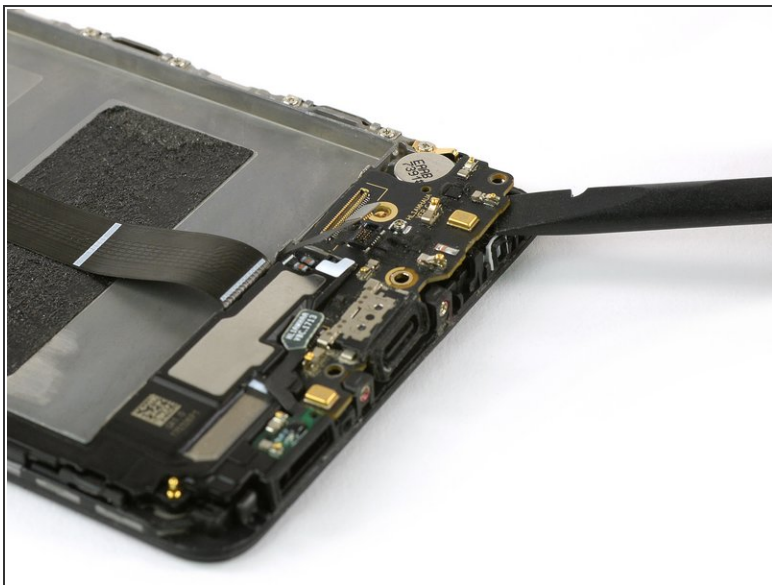
- Move down to the bottom part of your phone and remove the five Phillips #00 screws.
- Remove the metal shield that covers the connection of the motherboard flex cable.
- Use a spudger to unplug the motherboard flex cable and remove it.

Step 13



- Use a spudger to disconnect the loudspeaker and the charging port flex cable from the daughterboard.

Step 14



- Use a spudger to carefully lever up the daughterboard and remove it. Don't break the small clamps that hold down the daughter board but press them a little bit to the side to make the removal easier.

Step 15



- Use a spudger to remove the loudspeaker and the charging port. There is some adhesive underneath and the unit might be a little bit sticky.
- Use a tweezer to loosen the glued in vibration motor and remove it.
 - ❗ If you're having a hard time while removing the loudspeaker or the vibration motor you can use an [iOpener](#) to loosen the adhesive and try it again.
- ✦ Before reassembly check your new part for any components that might need to be transferred from the old one.
- ✦ When reassembling your phone replace old adhesive with [double-sided tape](#) or [pre-cut adhesive strips](#).

To reassemble your device, follow these instructions in reverse order. Before reassembly check your new part for any components that might need to be transferred from the old one.