



Huawei Mate 9 Display Replacement

This guide shows how to replace the display of your Huawei Mate 9 smartphone.

Written By: Dominik Schnabelrauch



INTRODUCTION

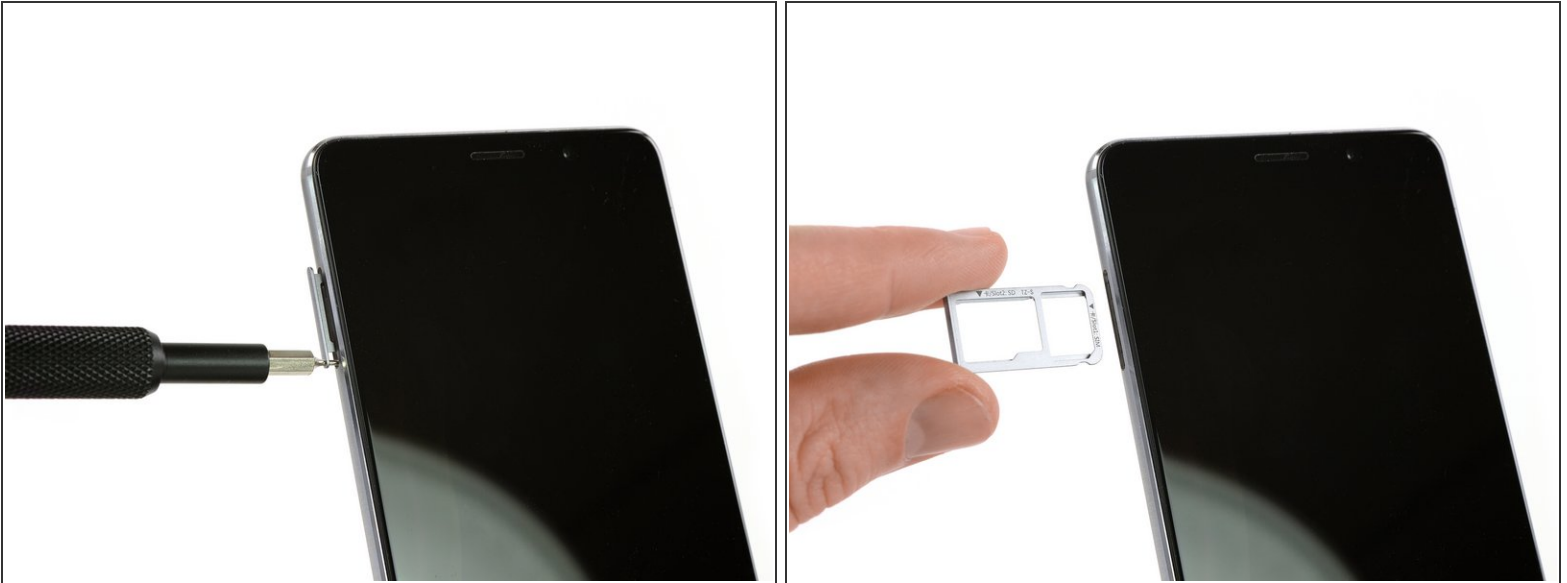
Use this guide to replace the display of your Huawei Mate 9 smartphone.



TOOLS:

- [SIM Card Eject Tool](#) (1)
 - [T2 Torx Screwdriver](#) (1)
 - [iFixit Opening Tools](#) (1)
 - [Spudger](#) (1)
 - [Tweezers](#) (1)
 - [Phillips #000 Screwdriver](#) (1)
 - [iOpener](#) (1)
 - [iFixit Opening Picks set of 6](#) (1)
 - [iFlex Opening Tool](#) (1)
-

Step 1 — Back Cover



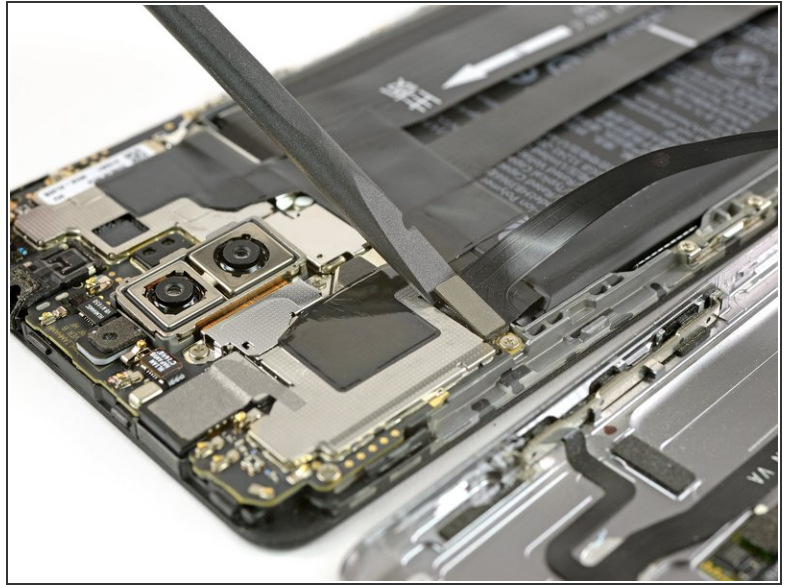
- First switch off your phone and remove the SIM card tray.

Step 2



- Remove both screws on the bottom with a Torx T2 screwdriver.
 - Use a plastic opening tool to get between the display and the case. Open the smartphone by carefully prying out the display with all the parts out of the case.
- ⚠ Don't open the phone all the way, yet. The fingerprint sensor cable is still connected to the back cover.

Step 3



- Swing open the phone to the right side.
- Disconnect the fingerprint sensor cable with a spudger.

Step 4 — Battery



- Carefully peel off the plastic sticker that holds both cables to the battery.

Step 5



- Remove the water indicator sticker and the Phillips #00 screw beneath it, that holds the cable bracket in its place.

Step 6



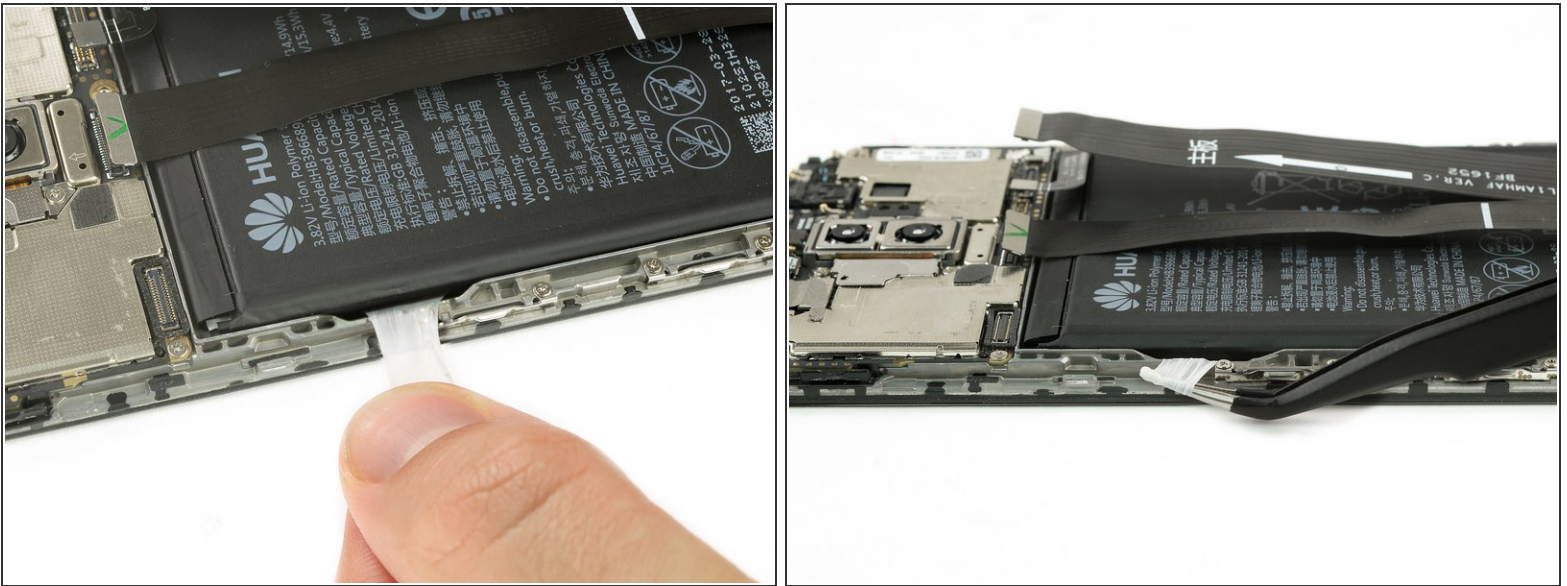
- Remove the cable bracket.

Step 7



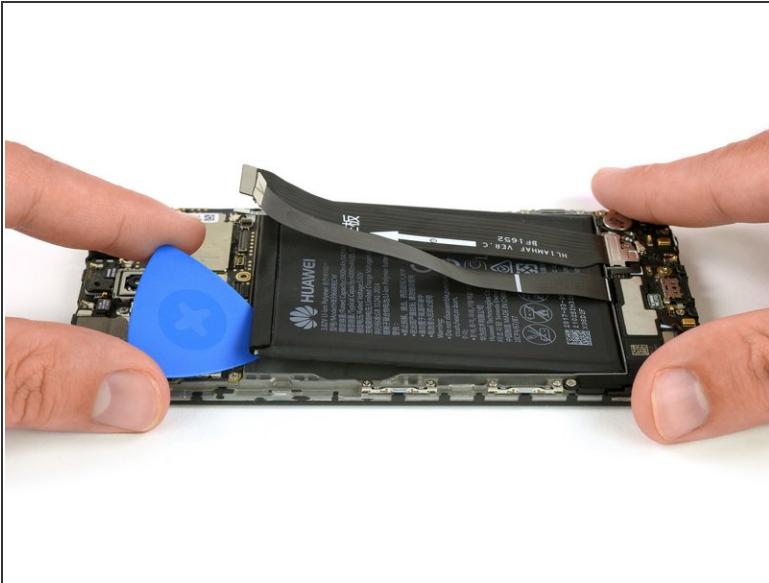
- Use a spudger to disconnect the interconnect, the battery and the display flex cable.

Step 8



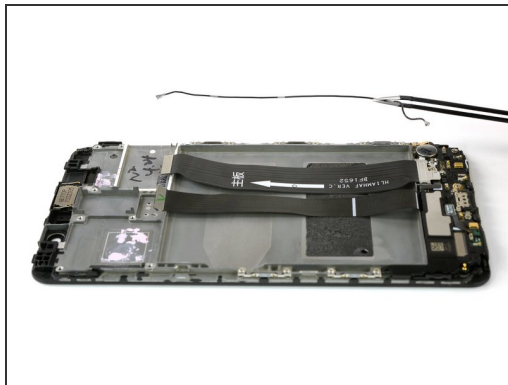
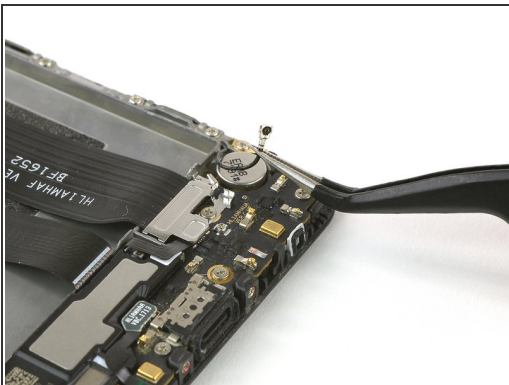
- Peel out the adhesive strip which is placed beneath the battery by steadily pulling at the tab in a flat angle.
- ❗ If the adhesive strip breaks, grab and twist it around tweezer tips a couple of times and then continue.

Step 9



- If the battery is not freed, use an opening pick to pry under the battery, freeing it from the remaining adhesive.
- Remove the battery.
- ☑ When reassembling your phone replace old adhesive with [double-sided tape](#) or [pre-cut adhesive strips](#).
- ⚠ Never reinstall a battery that has been bent or damaged during removal.

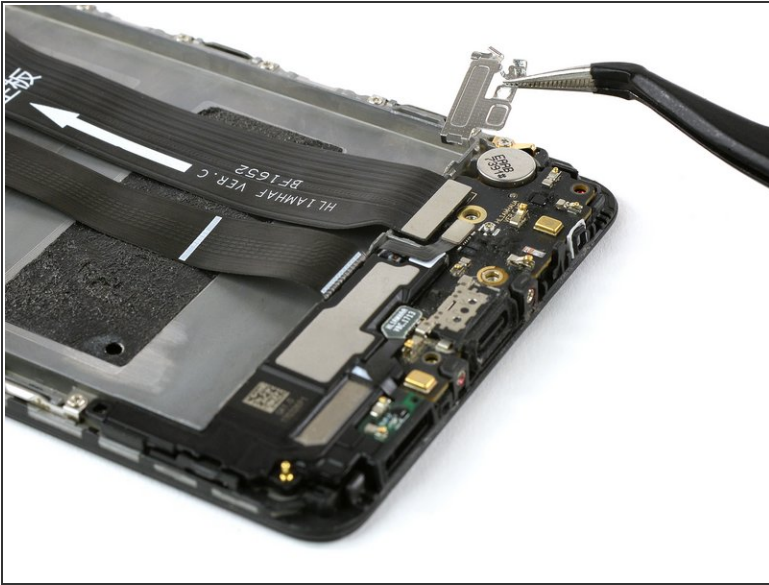
Step 10 — Display



- Disconnect the antenna cable and remove it carefully.
- Remove the five Phillips #00 screws that hold the daughter board and loudspeaker in its place.

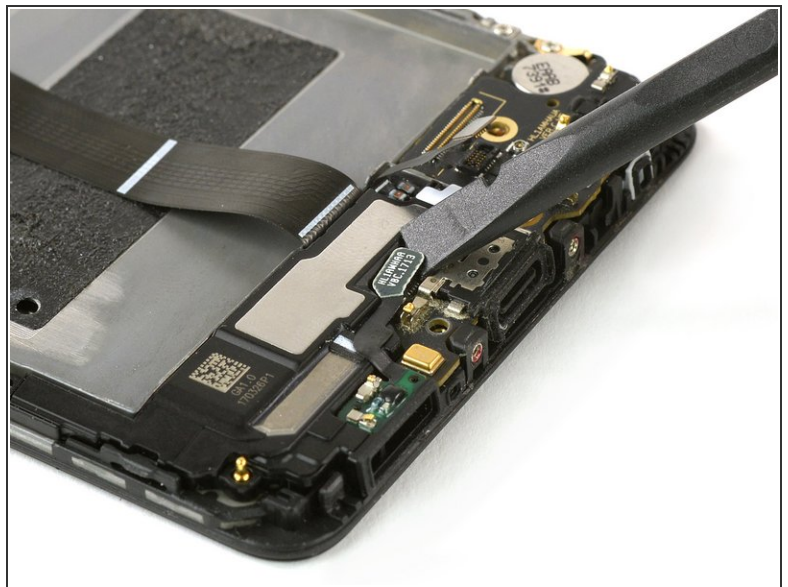
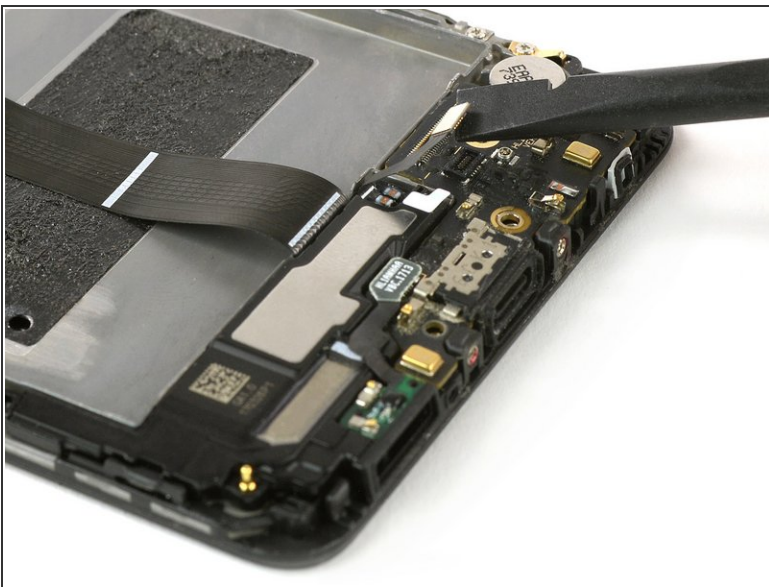
This document was generated on 2019-09-23 01:14:09 AM (MST).

Step 11



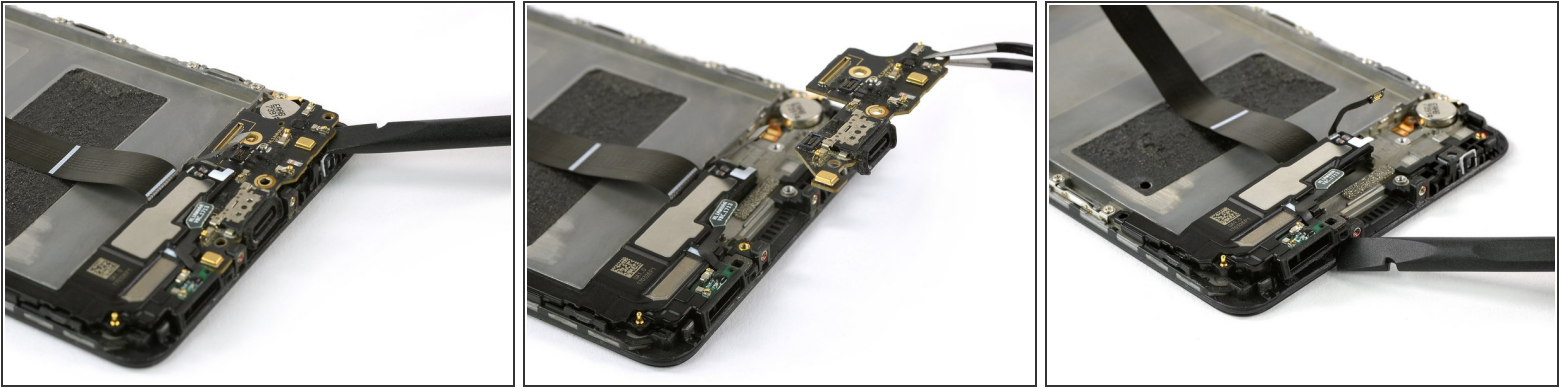
- Remove the metal shield that covers the connection of the motherboard flex cable.
- Use a spudger to unplug the motherboard flex cable and remove it.

Step 12



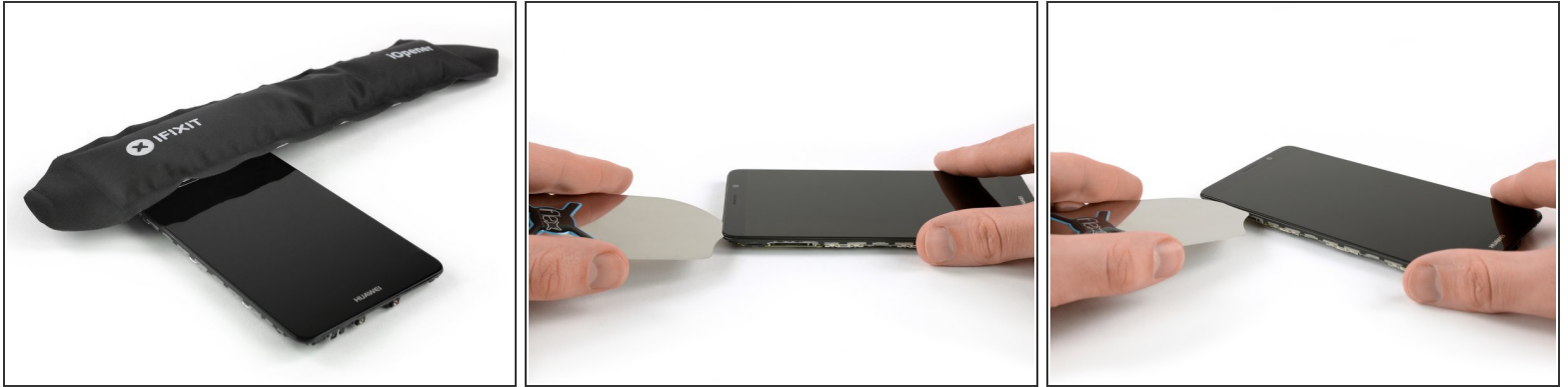
- Use a spudger to disconnect the loudspeaker and the charging port flex cable from the daughterboard.


Step 13



- Use a spudger to carefully lever up the daughterboard and remove it. Don't break the small clamps that hold down the daughter board but press them a little bit to the side to make the removal easier.
- Use a spudger to remove the loudspeaker and the charging port. There is some adhesive underneath and the unit might be a little bit sticky.
- ⓘ If you're having a hard time while removing the loudspeaker you can use an [iOpener](#) to loosen the adhesive and try it again.


Step 14



- Use an iOpener to loosen the adhesive beneath the display. Focus on the top and bottom area of it.
- After loosening the adhesive in the upper area of your phone, use an iFlex or opening pick and insert it carefully between the mid frame and your display.
 Do not insert the tool more than approximately 1/16 of an inch on the sides.
- Loosen the adhesive by sliding the along the mid frame.

Step 15



- Then carefully slide around the whole mid frame.
 If you're having a hard time while loosening the adhesive beneath the display you can reuse the iOpener and try it again.
- After you loosened all the adhesive, start to slowly lift up the display from the bottom of your phone.

Step 16



- To completely remove the display you need to thread the flex cable through the gap in the mid frame.
- ⓘ When reassembling your phone apply new adhesive where it is necessary.

To reassemble your device, follow these instructions in reverse order. When reassembling apply new adhesive where it is necessary.