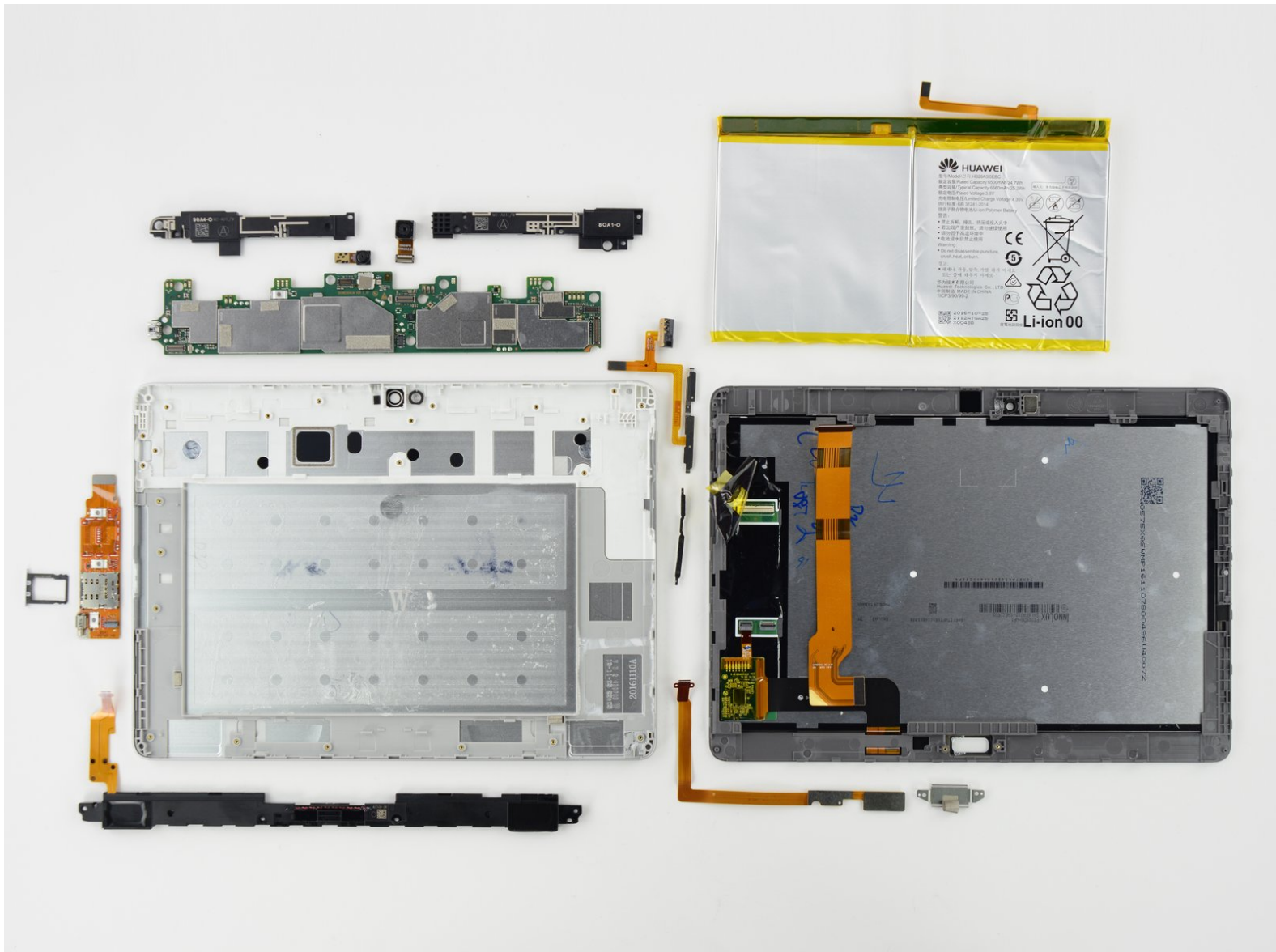




Huawei MediaPad M2 10.0 Repairability Assessment

Huawei MediaPad M2 10.0 repairability assessment performed on January 6, 2017.

Written By: Andrew Optimus Goldheart



INTRODUCTION

Unlike most tablets, the Huawei MediaPad M2 10.0 has a display assembly that is easy to remove, a big positive when looking at repair. The battery is incredibly difficult to remove, however, giving the tablet a 7 out of 10 on the repairability scale.



TOOLS:

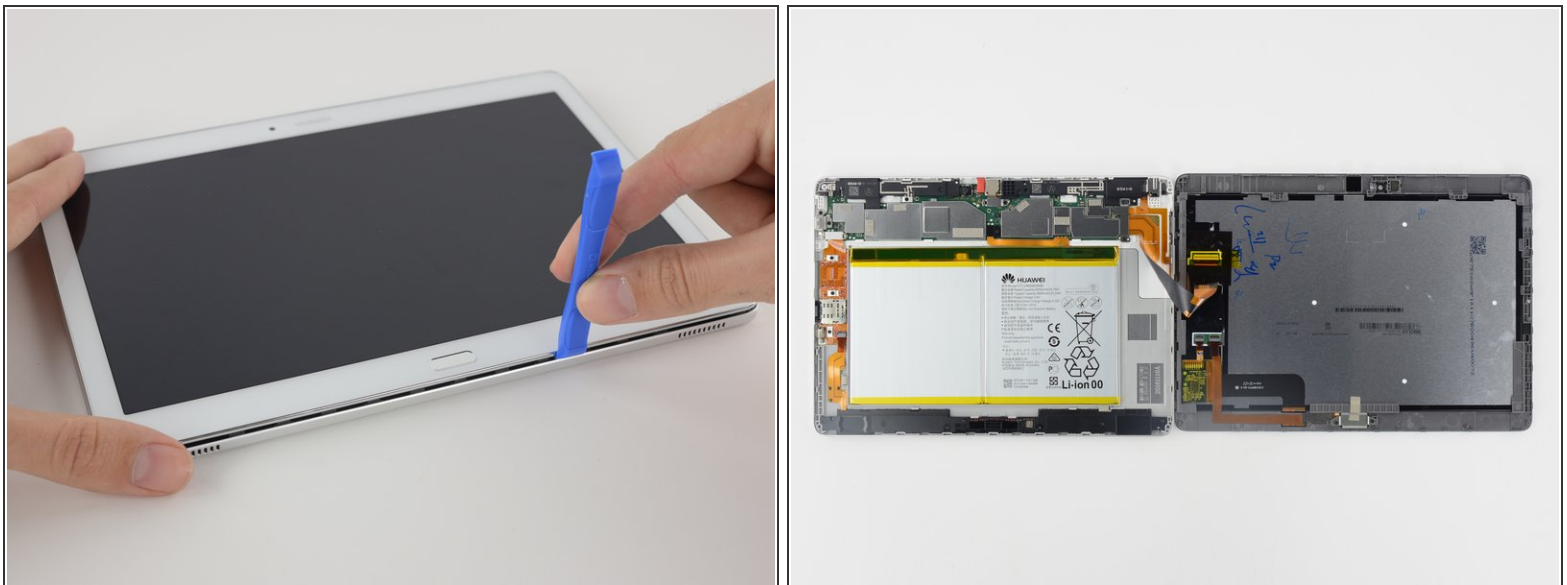
- [iFixit Opening Tool](#) (1)
 - [T5 Torx Screwdriver](#) (1)
 - [Phillips #00 Screwdriver](#) (1)
 - [Spudger](#) (1)
 - [Plastic Cards](#) (1)
 - [Tweezers](#) (1)
 - [iOpener](#) (1)
 - [iFixit Opening Picks set of 6](#) (1)
-

Step 1 — Huawei MediaPad M2 10.0 Repairability Assessment



- Front/back reference shots.

Step 2



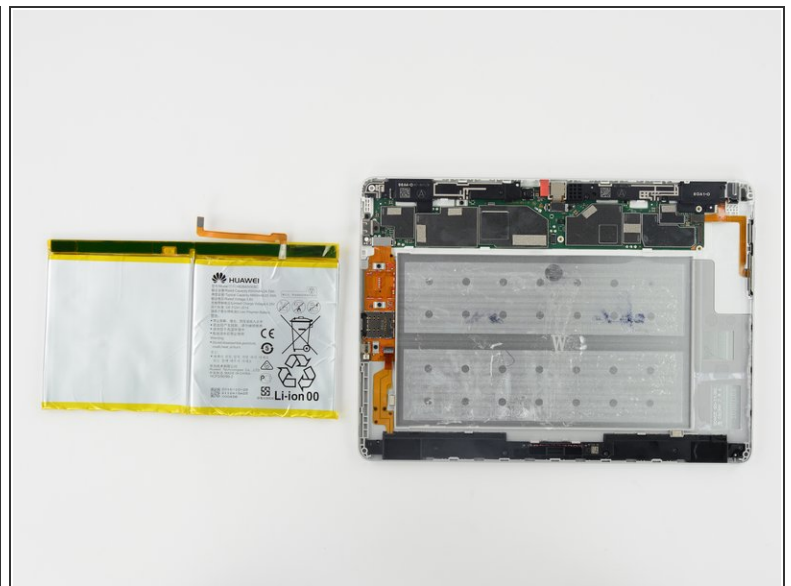
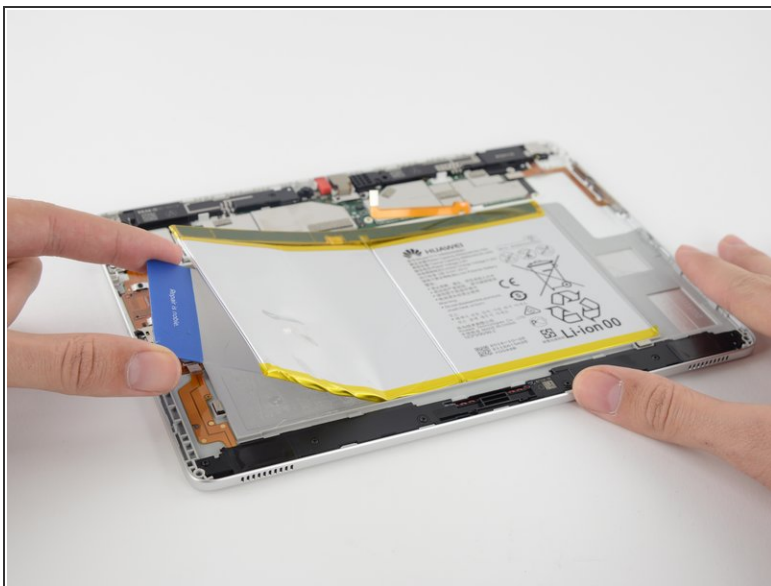
- Simple plastic clips make opening easy.
- The display cable has enough slack to lay the display aside to work on the interior.

Step 3



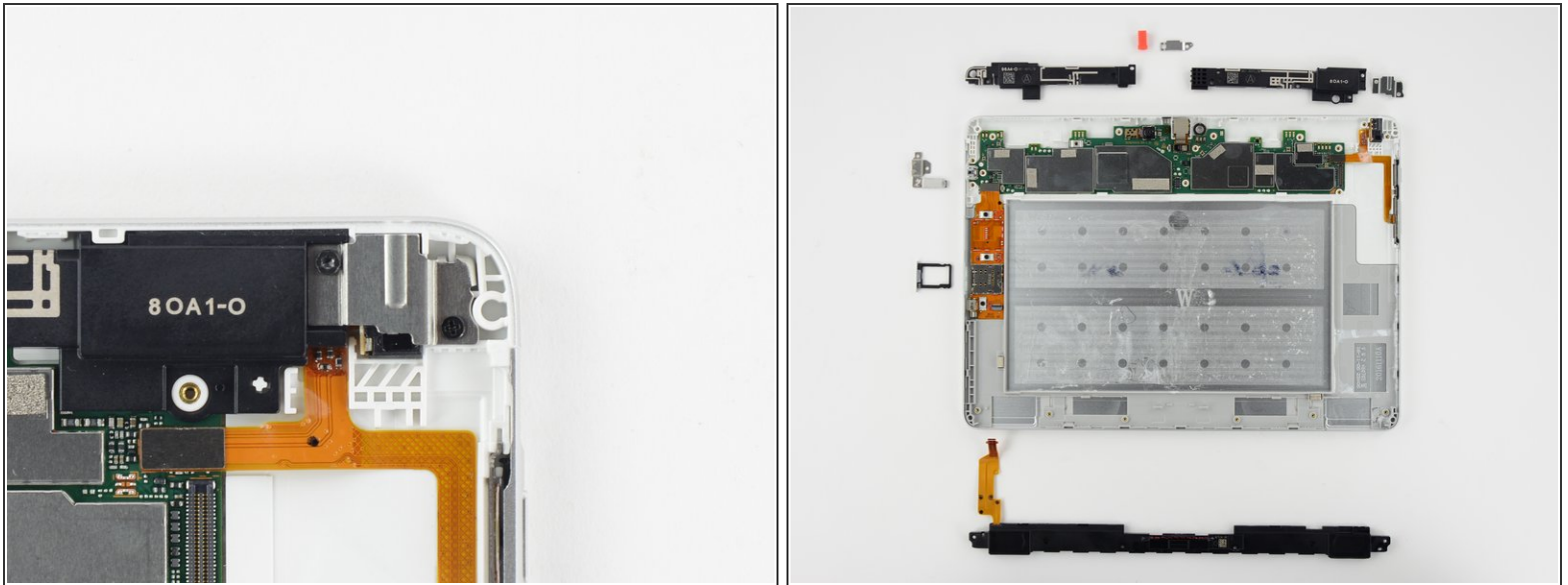
- Display assembly carries: display interconnect cable, home button/fingerprint reader and cable, and its bracket.
- Home button/fingerprint reader is easily removed and replaced.

Step 4



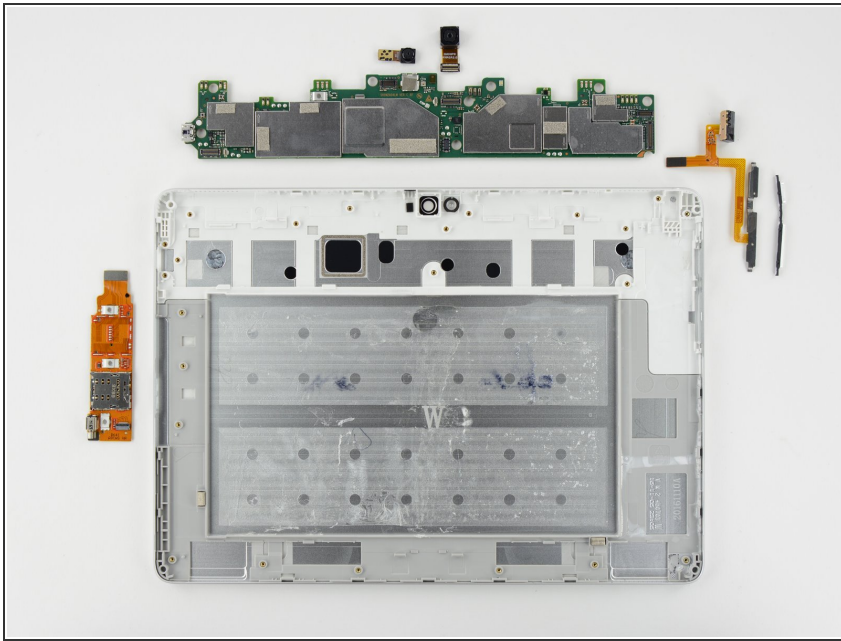
- The battery is glued to the rear case by very strong adhesive.
- Heat, adhesive removal fluid, and much prying, the battery is removed.
 - Frustrating that an inevitable repair/replacement would be this hard, but at least it isn't blocking other components' replacement.

Step 5



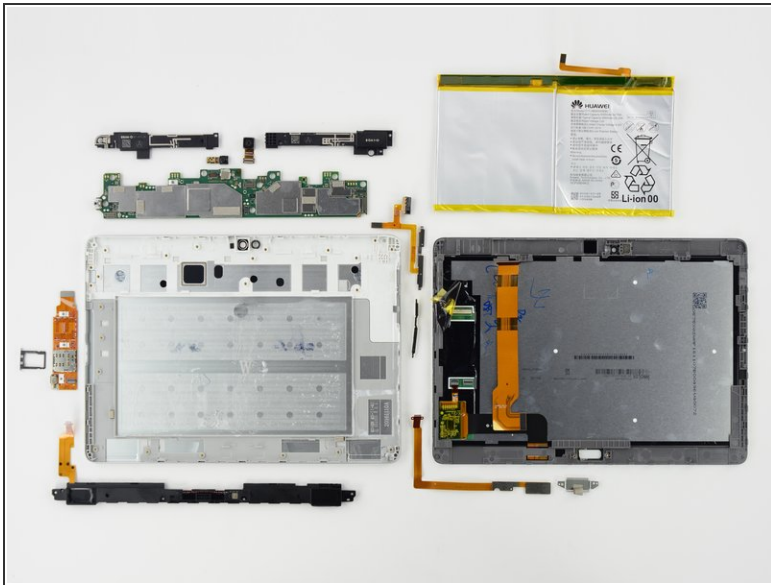
- The bracket over the speaker and button/headphone jack cable has two different kinds of screws, Torx and Phillips, making removal obnoxious.
- Removable in parallel with the battery are: lower speaker, speaker/antennas, brackets, and microphone bumper.
- SIM tray can be removed while the device is sealed, obviously.

Step 6



- The final components out of the rear case are fairly modular:
 - SIM reader and vibrator assembly
 - Headphone jack and button cable assembly
 - Front and rear facing cameras
 - Motherboard, unfortunately has a soldered-on charging port. That means a more expensive repair for a common failure point.

Step 7



- The Huawei MediaPad M2 earns a **7 out of 10** on our repairability scale (10 is the easiest to repair):
 - The display is easily removed from the simple clips holding it to the body, simplifying repairs.
 - Most components are modular and not overly complex.
 - The battery is extremely difficult to remove, even with heat and prying.
 - The charging port is soldered to the motherboard, making replacement of this high-use component expensive.
 - Manufacturer does not provide user-accessible repair documentation.