



# Huawei Nova 2 LCD Display + Touchscreen + Frame switch

Replacement of Huawei Nova 2 screen. In this manual, the complete image module is replaced (LCD / touch screen / frame). Nice repair to perform.

Written By: Dreetn





## TOOLS:

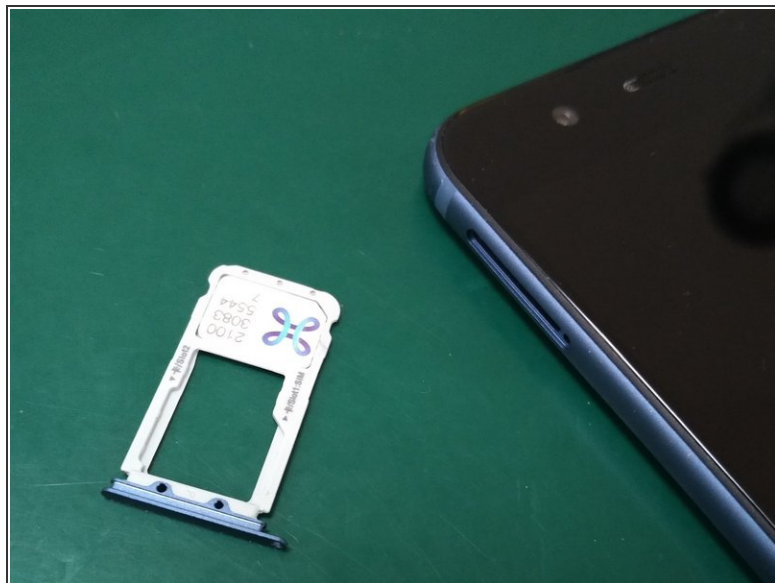
- [Spudger](#) (1)
- [Heat Gun](#) (1)
- [Plastic Cards](#) (1)
- [iFixit Opening Tools](#) (1)
- [T5 Torx Screwdriver](#) (1)
- [Phillips #00 Screwdriver](#) (1)
- [Multipurpose Glue](#) (1)



## PARTS:

- [New Item](#) (1)

## Step 1 — Sim tray



- To begin with, the sim tray is best removed. With this model and to do this repair it is not really necessary but in any case a good habit to start with.

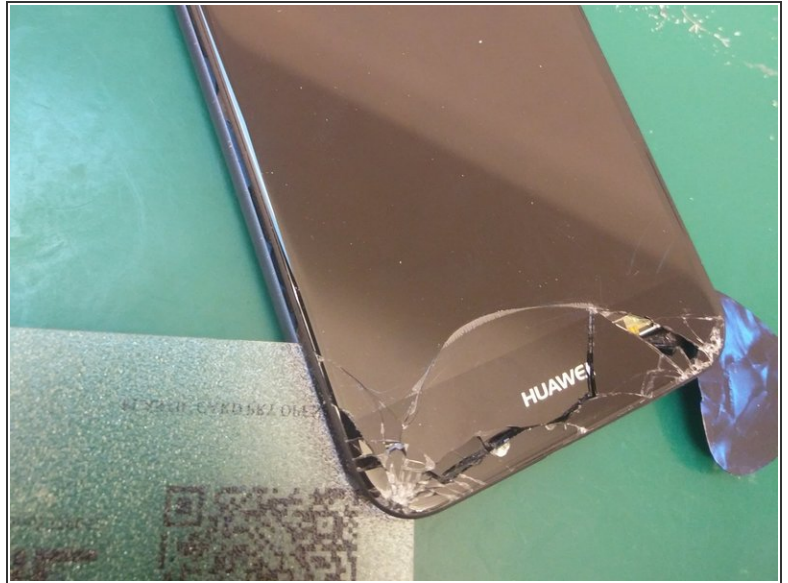
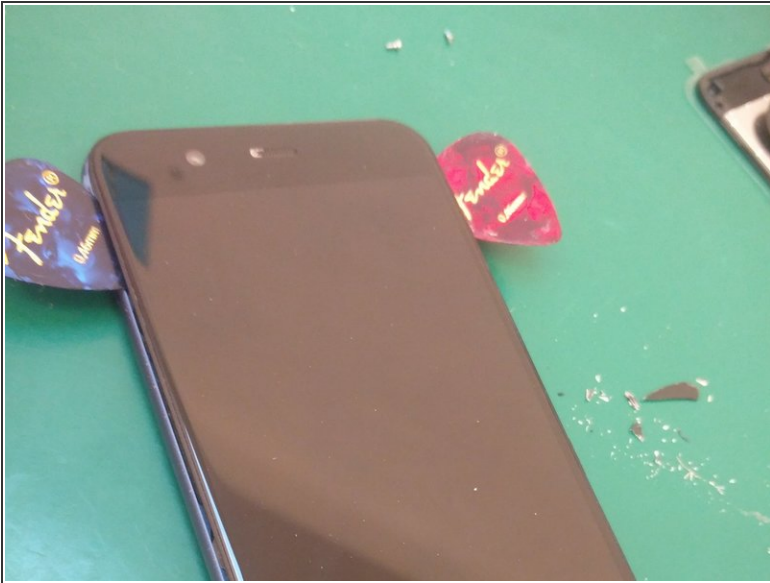
## Step 2 — Remove screws at the bottom



- Remove the 2 screws at the bottom that hold the screen module in place.

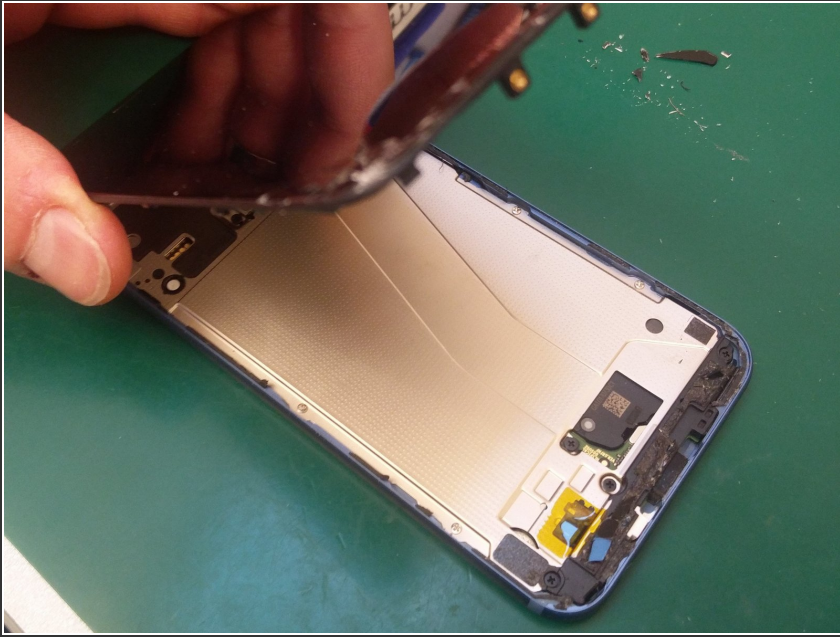


### Step 3 — Loosen display



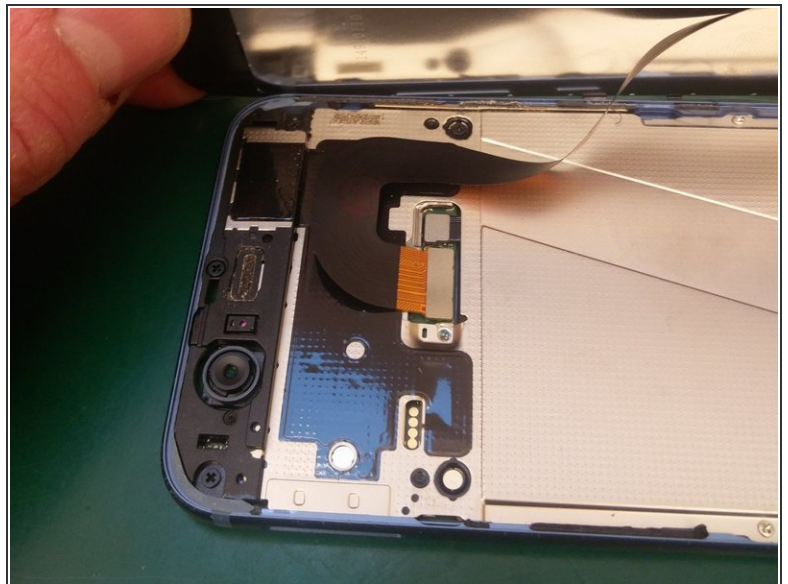
- Start by heating the screen to make the glue soft and smooth. The glued areas are the upper corners, around the ear speaker and thin glue strips on the sides. The most glued zone is the bottom: almost the entire black bottom with the Huawei logo is glued.
- In this example I tried to lift the display too quickly and the LCD was damaged by the already splintered underside. No extra profit to be made for this repair via sale of a broken screen: (

## Step 4 — Tilt the screen



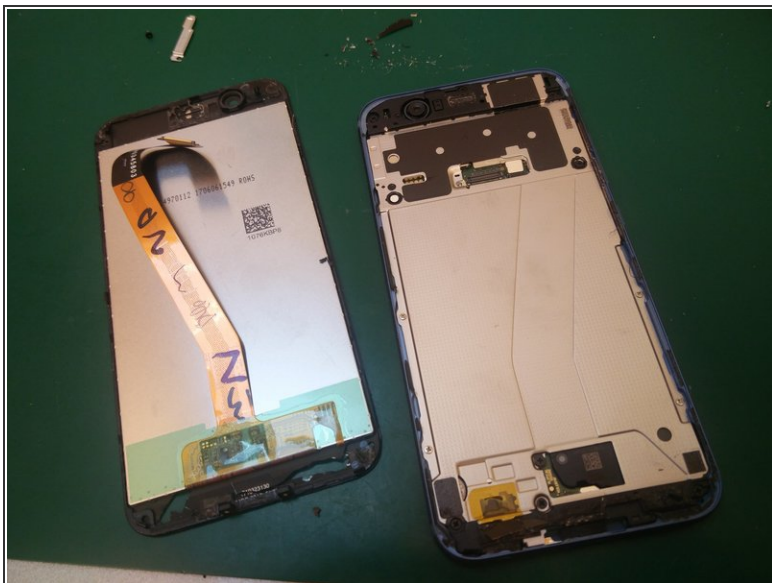
- After all the glue has been successfully cut using a pick or plastic card / playing card, you can carefully tilt the screen. Hold the top approximately in position and lift the bottom (see image). If resistance is encountered, the screen must also be heated up.
- The screen opens in a similar way to the iPhone 5/6 series.

## Step 5 — Unscrew the cover plate



- Now the display can be placed next to the device. Make sure that there are no excessive tensile forces or stresses on the connecting cable. Remove the Philips screw that holds the cover in place.

## Step 6 — Disconnect battery and screen



- Start by disconnecting the battery connector using a plastic spatula. It is always a good practice to disconnect the battery as soon as possible when carrying out a repair.
- Then disconnect the screen connector.

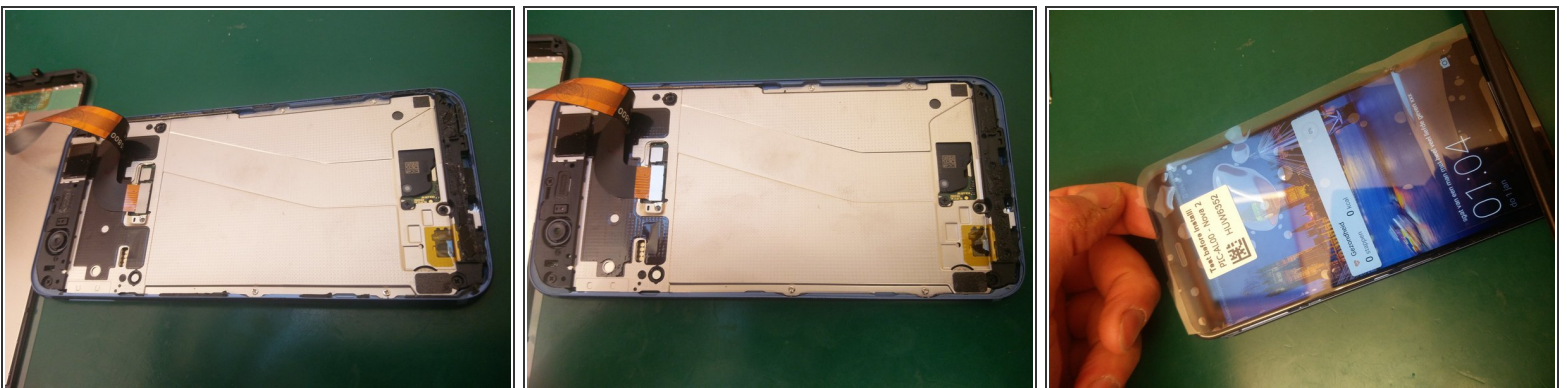


## Step 7 — Compare old and new screen



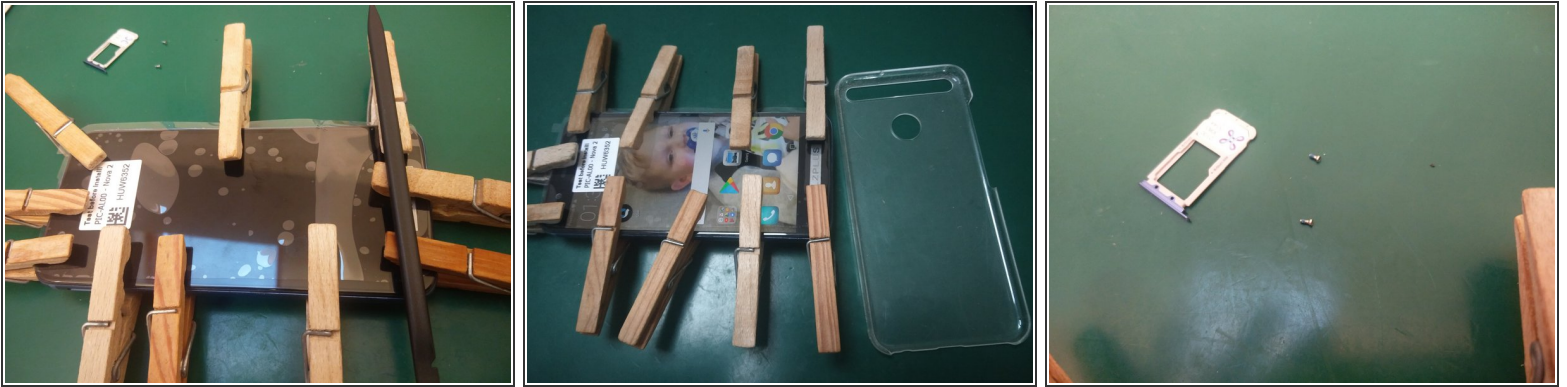
- Carefully compare the old with the new screen and make sure that all protective films and stickers are removed (possibly after testing the screen). For example, I had a red stick on the camera fitting for protection against scratches and dirt.
- This is also an ideal time to carefully study and remember all glued areas.

## Step 8 — Remove adhesive residue



- Remove the old glue on the edges of the frame as much as possible.
- First, click the screen connector back in. The battery connector can then be reconnected and the screen can be tested before gluing the screen.

## Step 9 — Install the new screen



- Apply glue to all previously studied areas with glue residues on the old screen, namely the edges, the entire black bottom of the screen, the top corners and around the ear speaker.
- Align the new screen neatly with the frame. Press the screen gently. Avoid applying too much force to the screen to prevent LCD damage. You should hear slight clicking sounds when the pins and crosses on the frame are anchored in the chassis.
- In the end, do not forget to screw in the 2 screws at the bottom, replace the sim tray and place any covers.

Enjoy your "as good as new" Nova 2!