



# Huawei P10 Main and display flex disconnect

prereq main and display flex cable disconnect.

Written By: Dominik Schnabelrauch



---

## INTRODUCTION

prereq - disconnect main and display flex cable.



### TOOLS:

- [Spudger](#) (1)
  - [iFixit Opening Tools](#) (1)
-

## Step 1 — Back Cover



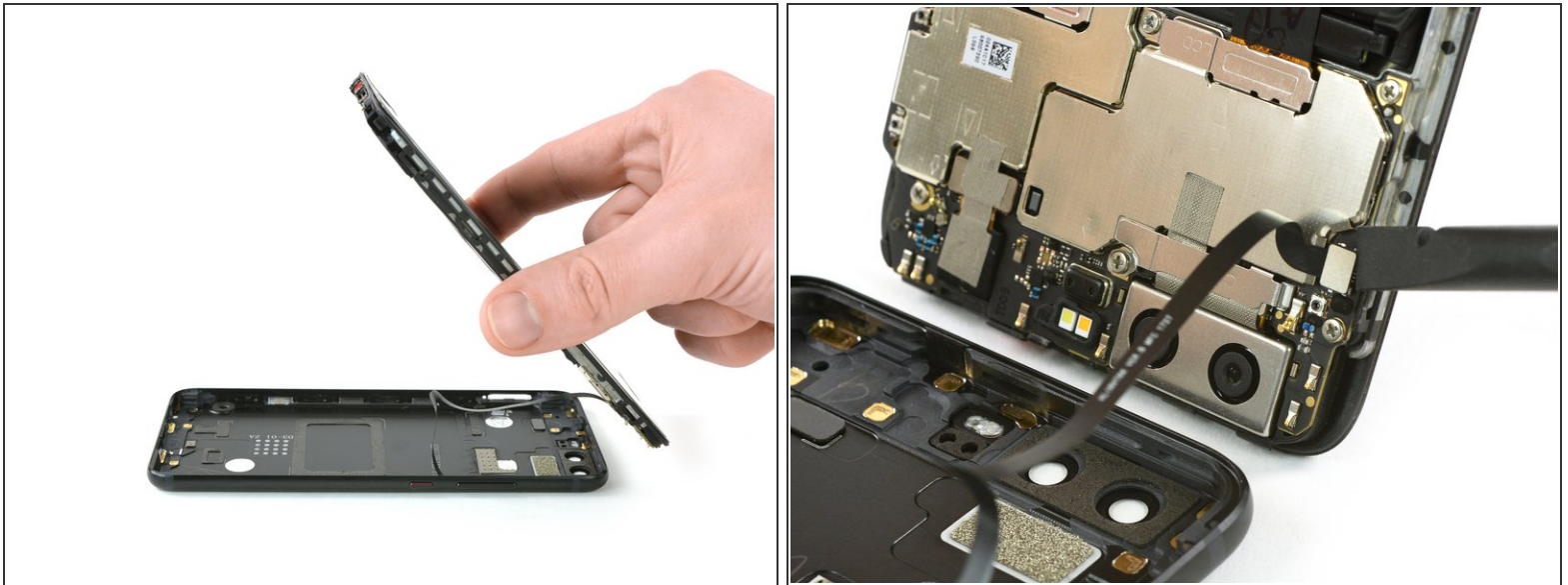
- Switch off your phone.
- Remove the two Pentalobe P2 screws at the bottom.
- Remove the SIM card tray.


## Step 2



- Insert a plastic opening tool between the display and the case starting at the bottom area of your phone.
- Carefully pry the display with its parts out of the case.
  - ⓘ Getting the prying tool in will require some effort, be careful not to slide the tool too much or you might slightly damage the housing.
- After you pried out the bottom end, use the opening tool to open the clamps on both sides.

### Step 3



 Don't open the phone all the way, yet. The cable for the standby and volume buttons is still connected to the back cover.

- Swing open the phone backwards.
- Use a spudger to disconnect the power- and volume button flex cable.

### Step 4 — Main and display flex disconnect



- Remove the two Phillips #00 screws.
- Use tweezers to remove both metal plates.



## Step 5



- Use a spudger to disconnect the interconnect, the battery and the display flex cable.

To reassemble your device, follow these instructions in reverse order.