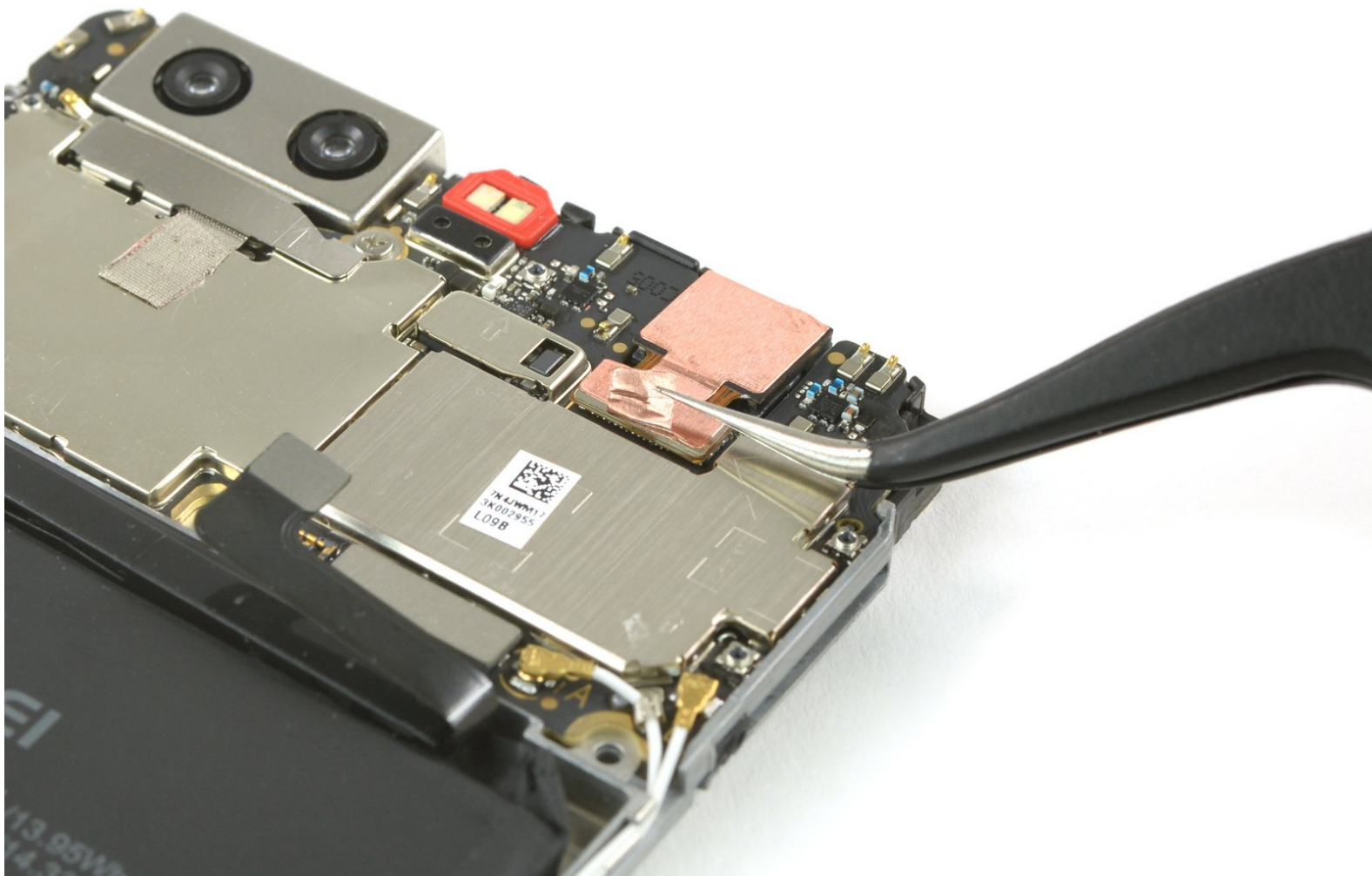




Huawei P10 Plus Front Facing Camera Replacement

This guide shows how to replace the front facing camera in your Huawei P10 Plus.

Written By: Dominik Schnabelrauch



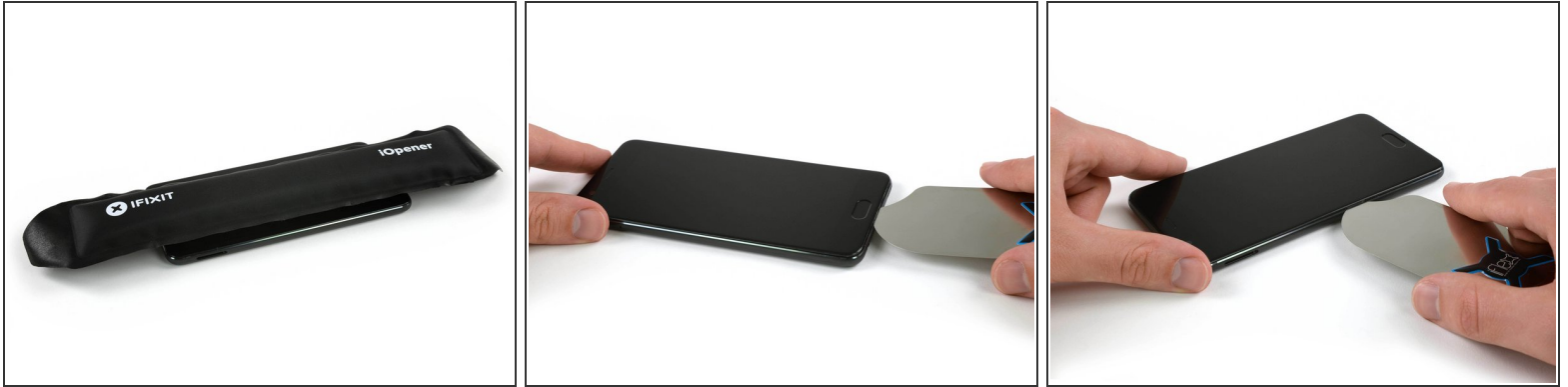
INTRODUCTION

In this guide we show you how to replace the front facing camera in your Huawei P10 Plus smartphone.


TOOLS:

- [iFlex Opening Tool](#) (1)
 - [iOpener](#) (1)
 - [SIM Card Eject Tool](#) (1)
 - [iSlack](#) (1)
 - [Tweezers](#) (1)
 - [Spudger](#) (1)
 - [Phillips #000 Screwdriver](#) (1)
-

Step 1 — Display




- [Use an iOpener](#) to loosen the adhesive beneath the display, focusing on the upper and lower part of the display.
- Use an opening pick, or iFlex, to separate the adhesive on all sides of the display.

 To avoid damage to the display, do not push the tool too deeply into the phone.

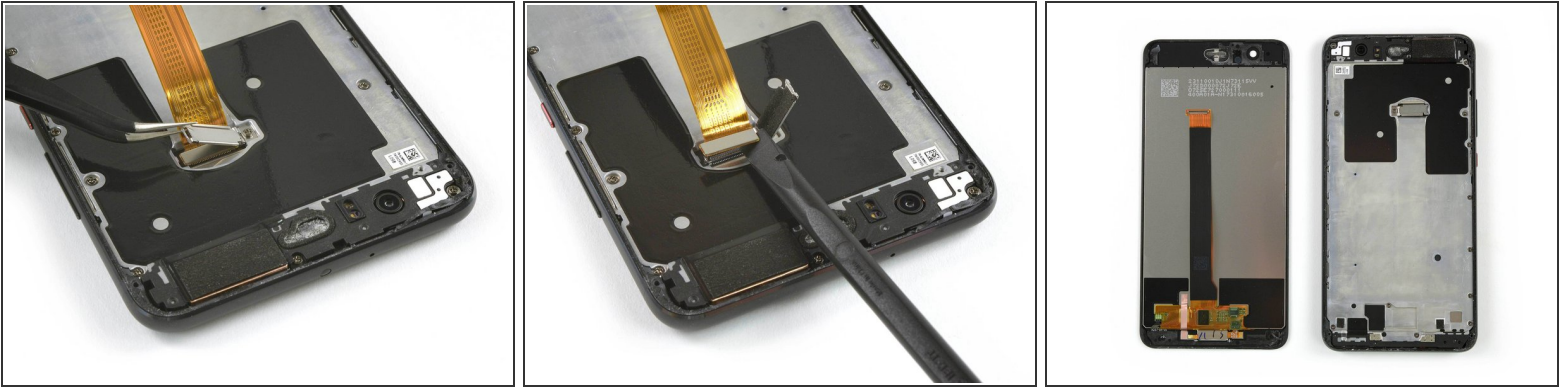
Step 2



 There is a thin display cable between the screen and phone, be very careful not to rip it when opening the device.

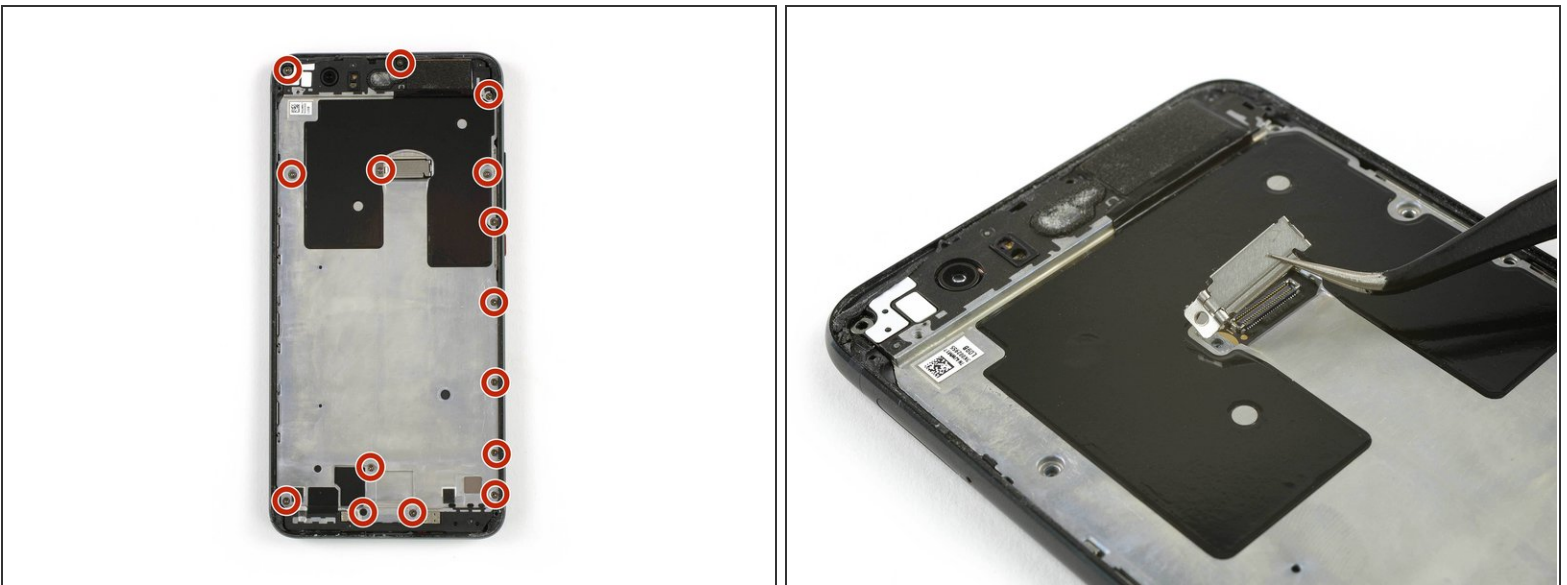
- Place a suction cup, or iSlack, on the upper portion of the phone and lift the display off the midframe.
- Don't remove the display, the cable is trapped under a bracket screwed to the phone. You can flip the display to lay it down without straining the cable, or simply hold it in the next steps.

Step 3



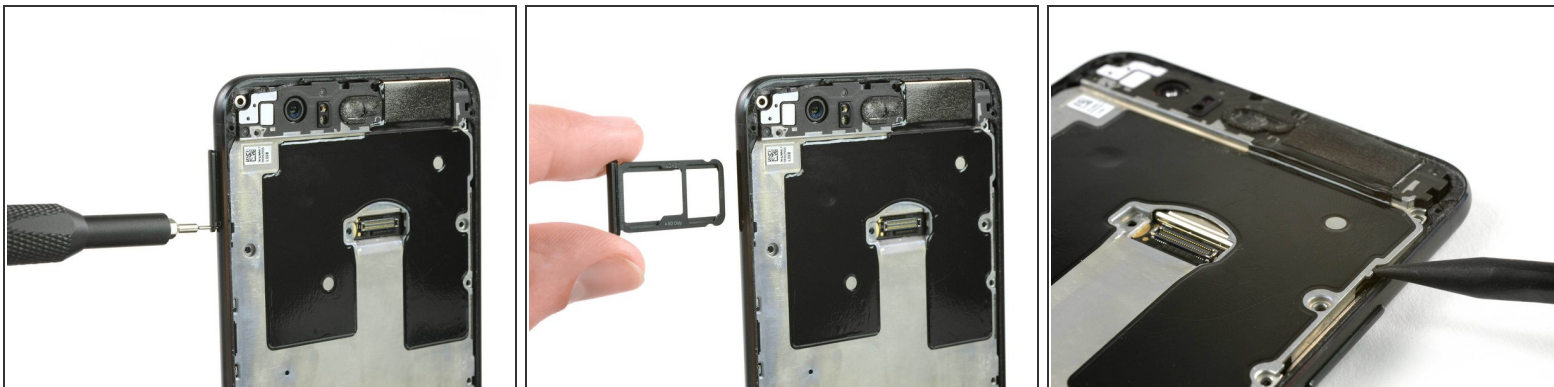
- Open the metal shield that covers the display flex cable.
 - Use a spudger to disconnect the display flex cable.
 - Remove the display.
- ☒ When reassembling your phone replace old adhesive with [double-sided tape](#) or [pre-cut adhesive strips](#).

Step 4 — Midframe



- Remove the 15 Phillips #00 screws.
- Remove the metal shield which held down the display flex connector.

Step 5



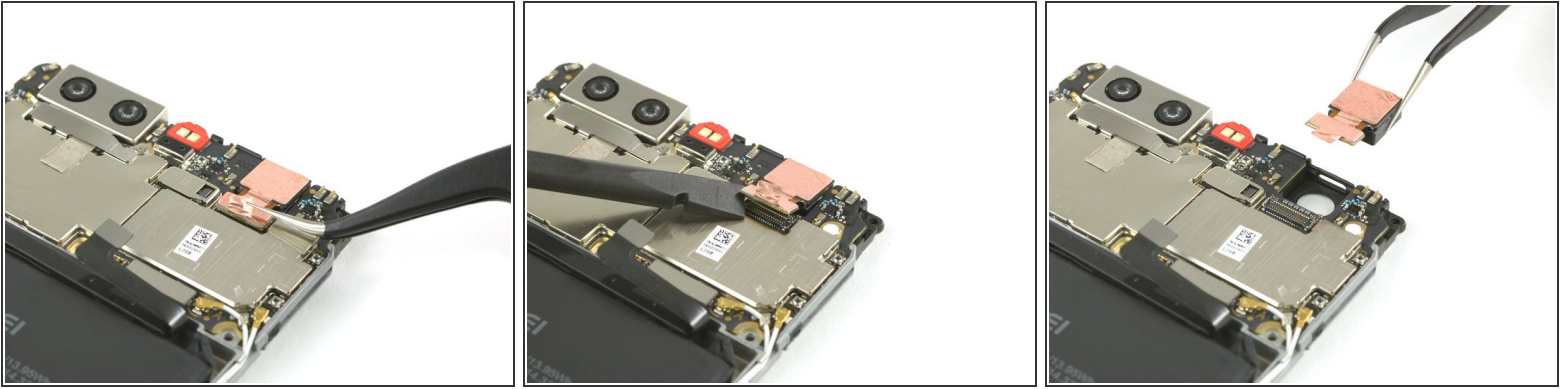
- Remove the SIM card tray.
- Use the pointed end of a spudger to pry out the mid frame until you can get a good grip.

Step 6



- Remove the mid frame.
- Disconnect the battery flex cable with a spudger.

Step 7 — Front Facing Camera



- Peel of the adhesive tape that connects the front facing camera to the mainboard.
- Use a spudger to disconnect the front camera flex cable.
- Remove the front camera.

To reassemble your device, follow these instructions in reverse order. When reassembling your phone apply new adhesive where it is necessary.