



# Huawei P10 Repairability Assessment

Repairability assessment of the Huawei P10 performed on December 6, 2017.

Written By: Tobias Isakeit



## INTRODUCTION

Although the display of the P10 carries all the parts and calls for an extensive repair when it brakes, all other repairs are fairly simple.

---

### TOOLS:

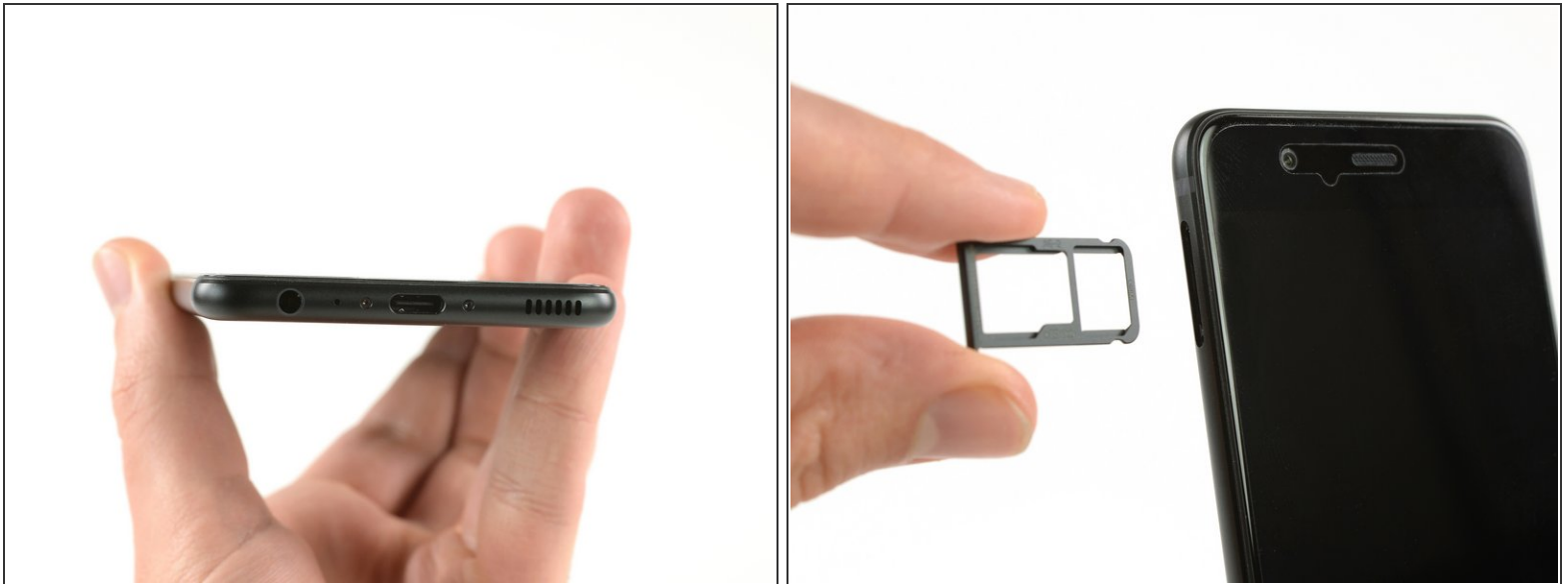
- [iFixit Opening Tools](#) (1)
  - [iFixit Opening Picks set of 6](#) (1)
  - [P2 Pentalobe Screwdriver iPhone](#) (1)
  - [Phillips #000 Screwdriver](#) (1)
  - [Halberd Spudger](#) (1)
  - [Spudger](#) (1)
  - [Tweezers](#) (1)
  - [iOpener](#) (1)
-

## Step 1 — Huawei P10 Repairability Assessment



- Fancy toolbox style packaging.
- Front and back reference photos.

## Step 2



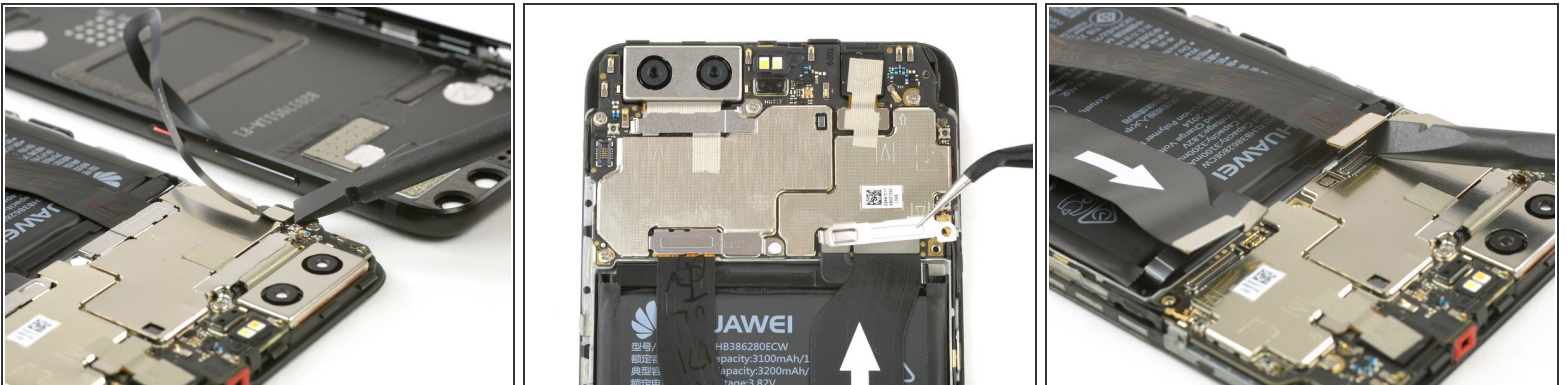
- Two Pentalobe P2 screws on the bottom.
- Remove the SIM card.

### Step 3



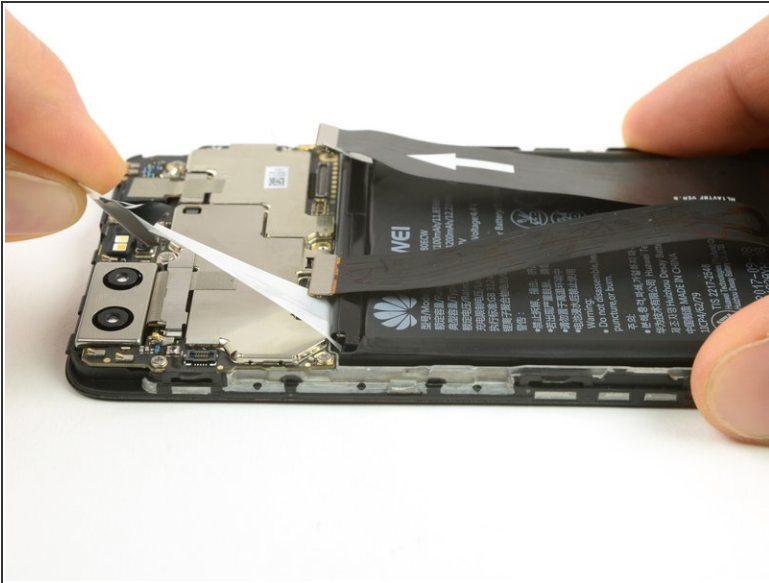
- Prying the case open with a plastic opening tool.
- The fingerprint sensor is still connected to the motherboard.

### Step 4



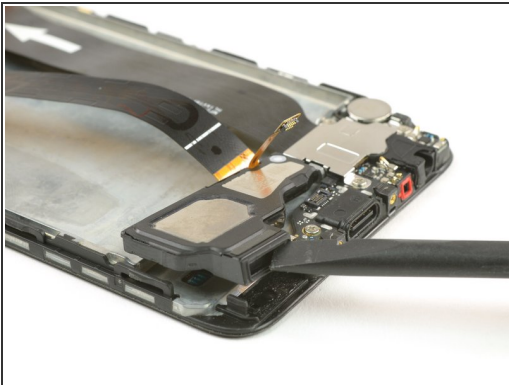
- The fingerprint sensor can be unplugged easily with a spudger.
- Two metal brackets—one of the screws covered with a liquid indicator—secure the battery and interconnect cables as well as the display cable.

## Step 5



- The battery is held in place by two adhesive strip of which one of them has a pull tab for easy removal.

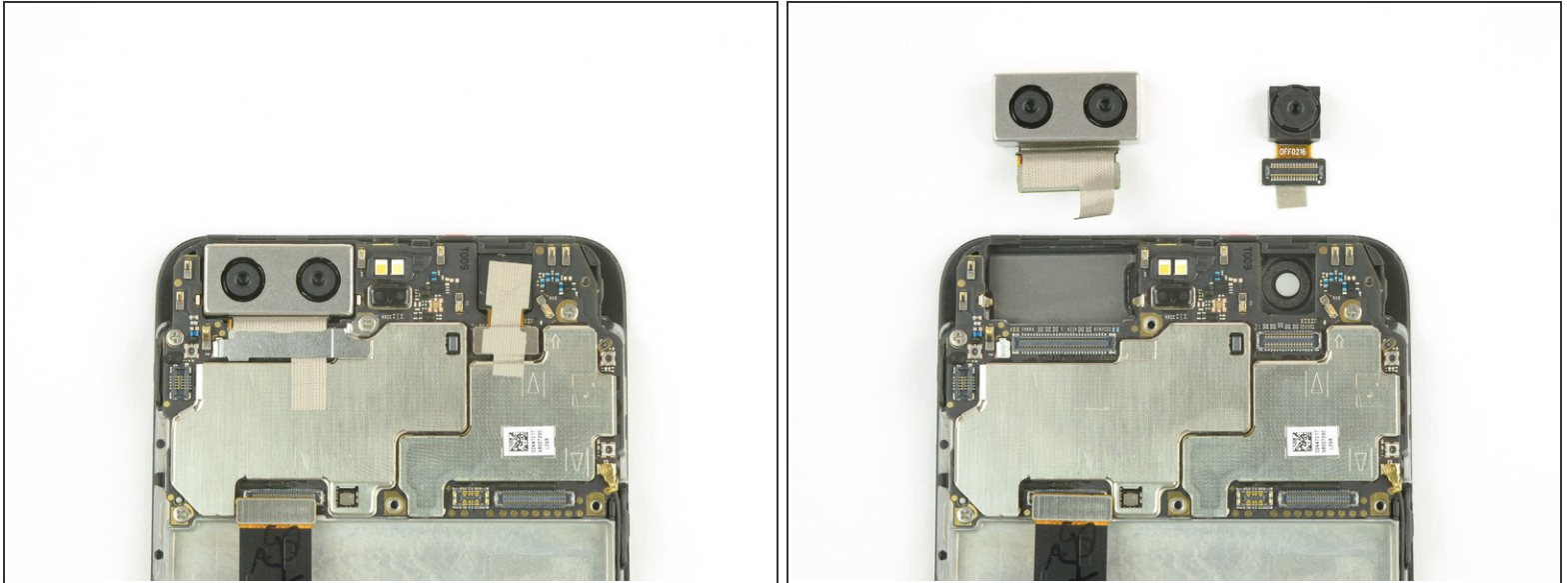
## Step 6



- The loudspeaker is glued in place with a mild adhesive.
- With the metal shield removed we can unplug the interconnect cable, the antenna cable and the headphone connector.
- The headphone jack and the daughterboard come out easily.
- The vibrator is held in place by a mild adhesive.



## Step 7



- Both cameras are easy to remove. The connector of the dual camera is secured by a metal bracket.

## Step 8



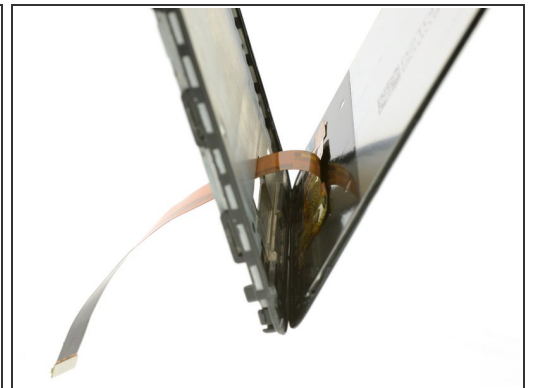
- Three more Phillips screws hold the motherboard in place.
- The earpiece speaker and the proximity and brightness sensor are fixed by mild adhesives.

## Step 9



- The power and volume button bracket can be removed very easily with a tweezers.

## Step 10

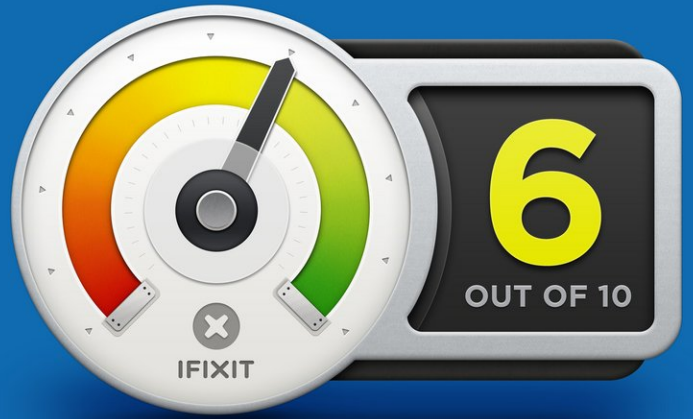


- With a little bit of heating one of the display corners can be lifted with an opening pick.
- The adhesive on the side is cut with a halberd spudger.
- Now the display cable can be thread through the frame.

## Step 11



## REPAIRABILITY SCORE:



- The Huawei P10 earns a 6 out of 10 on our repairability scale (10 is the easiest to repair):
  - Many components are modular and can be replaced independently.
  - Only standard Phillips screws are used.
  - Except for the two Pentalobe screws on the bottom.
  - The battery can be replaced after removing a few cables and has a pull tab on one adhesive strip.
  - Components are adhered to the back of the fused display.