



Huawei P20 Lite Display (with frame and battery) Replacement

A guide how to replace the LCD including frame and battery for the Huawei P20 Lite.

Written By: Harvey





TOOLS:

- [iFixit Opening Tools](#) (1)
- [Phillips Screwdriver](#) (1)
- [Metal Spudger](#) (1)
- [Suction Handle](#) (1)



PARTS:

- [02351VPR - Huawei Display Assembly with frame and battery](#) (1)

Step 1 — Remove SIM Card Tray



- Turn the phone off and remove the SIM Tray before beginning the repair

Step 2 — Remove Battery Cover



- Use a suction cup and pick to get between the battery cover and frame.
- Work the pick all the way around to loosen the adhesive and remove the cover.
- Flip the cover carefully to the right side of the phone, there is a cable attached to the back cover for the fingerprint ID sensor.

This document was generated on 2019-09-18 06:11:00 PM (MST).

Step 3 — Release Fingerprint ID Cable



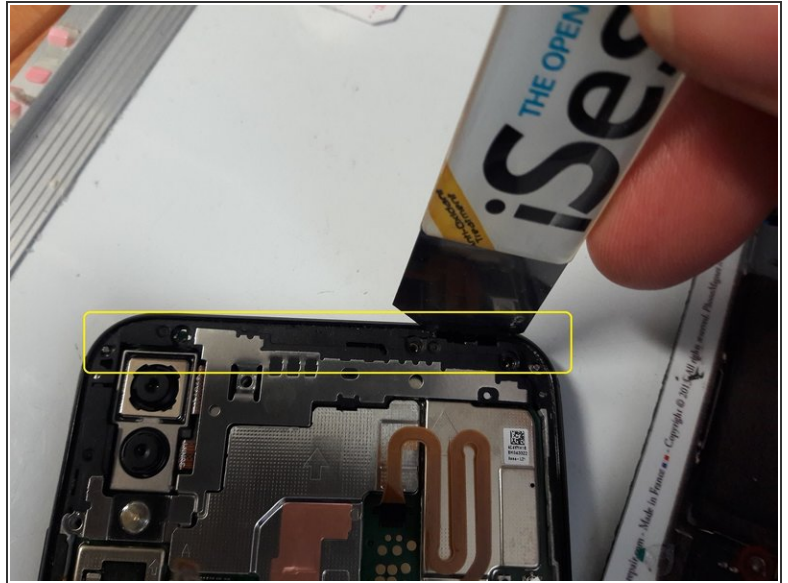
- Release the ZIF connector to remove the Fingerprint scanner cable from the back cover.

Step 4 — Remove Upper Screws



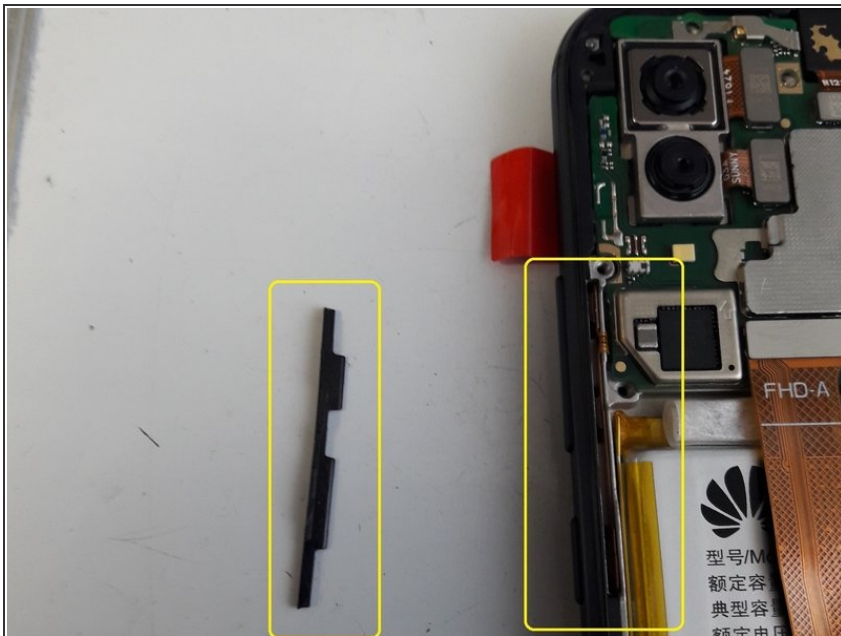
- Remove the 8 upper screws that hold the metal covers.
- One of the screws may be covered with a white dot sticker. Remove the dot to access the screw.

Step 5 — Remove covers for cables and mainboard



- Once the screws have been removed (as described in the previous step) the two lower metal covers can be removed.
- The upper cover can be removed by prying the upper right corner free (2nd picture).

Step 6



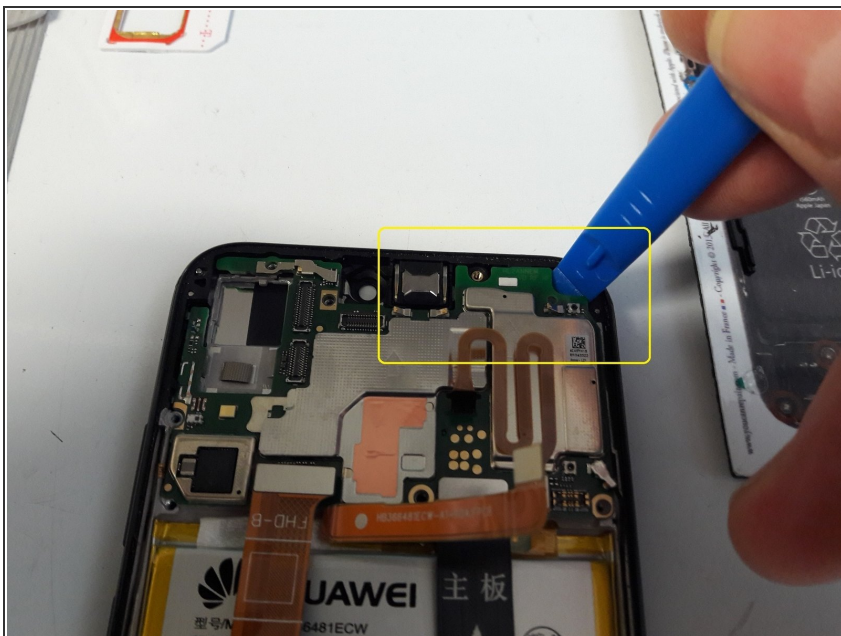
- On the left side in the frame, is a small plastic retainer. Remove this and transfer to the new frame.

Step 7 — Disconnect cables



- Disconnect the battery connector from the mainboard.
- Remove the dual camera, the front camera and the two flex cables. The Wi-Fi antenna cable can also be disconnected

Step 8



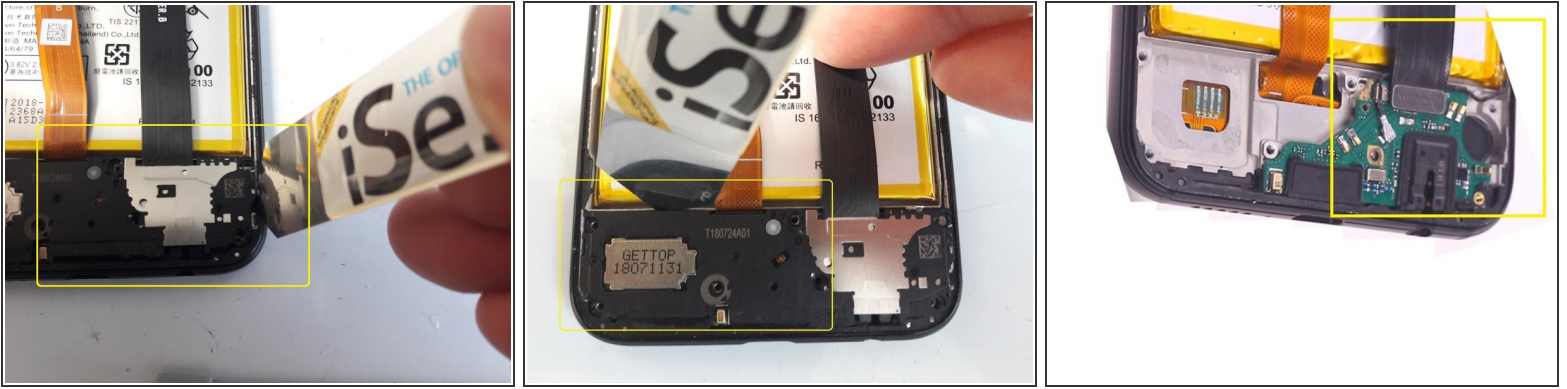
- Using a spudger, carefully pry the mainboard up on the upper right corner to release it from the frame.

Step 9



- At the bottom of the phone, there are seven screws that need to be removed.
- Underneath the cover is the daughterboard

Step 10



- Using the iOpener or a similar tool, loosen the cover on the right side, by prying between the cover and the frame.
- At the top of the cover (2nd picture) use the iOpener to pry up the cover to remove it from the frame.
- Underneath the cover is the daughter board containing the charger port and headphone jack. Disconnect the cable attached to the daughter board.
- Pry the daughter board to remove it from the frame, it is lightly glued, and can be reused in the new frame.
- Repeat the steps in reverse to reassemble the phone.

To reassemble your device, follow these instructions in reverse order.