



Huawei P20 Lite Screen + Frame Replacement

Huawei P20 Lite Screen replacement/disassembly.

Written By: Pieter van den berg



INTRODUCTION

Steps to disassemble the device in order to replace the screen or other components.



TOOLS:

- [Heat Gun](#) (1)
- [Heavy-Duty Suction Cups \(Pair\)](#) (1)
- [iFixit Opening Picks set of 6](#) (1)
- [Isopropyl Alcohol](#) (1)
- [Phillips #0 Screwdriver](#) (1)



PARTS:

- [Blue Huawei P20 Lite Screen](#) (1)

Step 1 — Removing the Back Glass



- Heat up the Back glass generously.
- **BEWARE!!** The back glass will be extremely hot, so be careful.
- Remove the sim tray.

Step 2 — Lifting the Back glass.



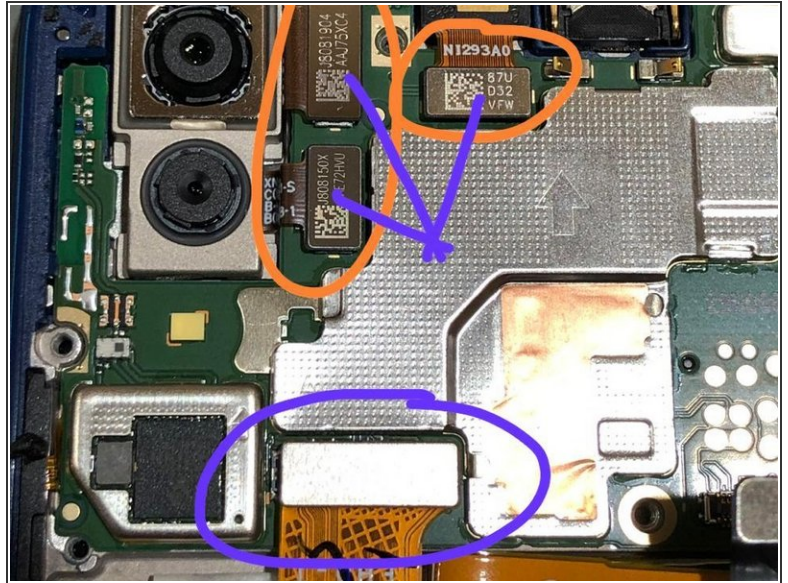
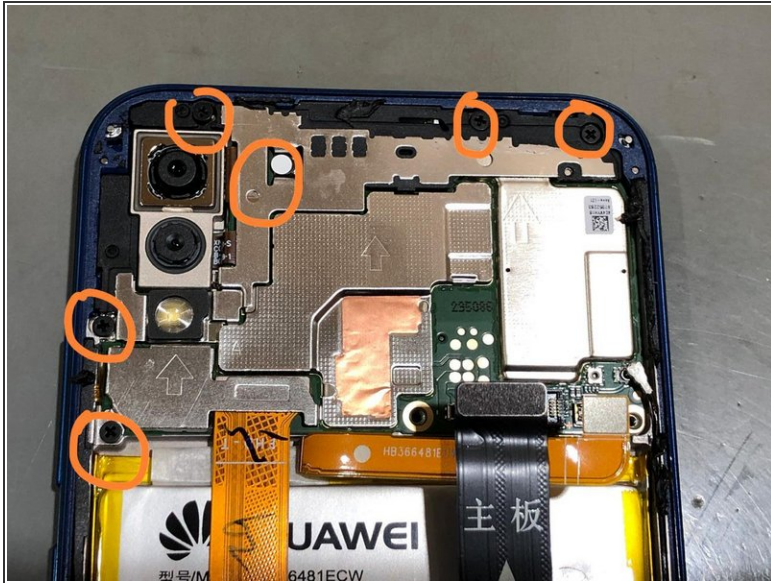
- With some alcohol and a suction cup pry the back glass from the frame gently.
- When you see a small gap, insert a spatula or pick to loosen up the adhesive.
- Slide the pick around the device to loosen the back glass.
- **BE CAREFUL OF THE FINGERPRINT SENSOR FLEX!.** The flex connects at the top right corner of the device so do not enter the pick in too deep.

Step 3 — Disconnect Fingerprint sensor



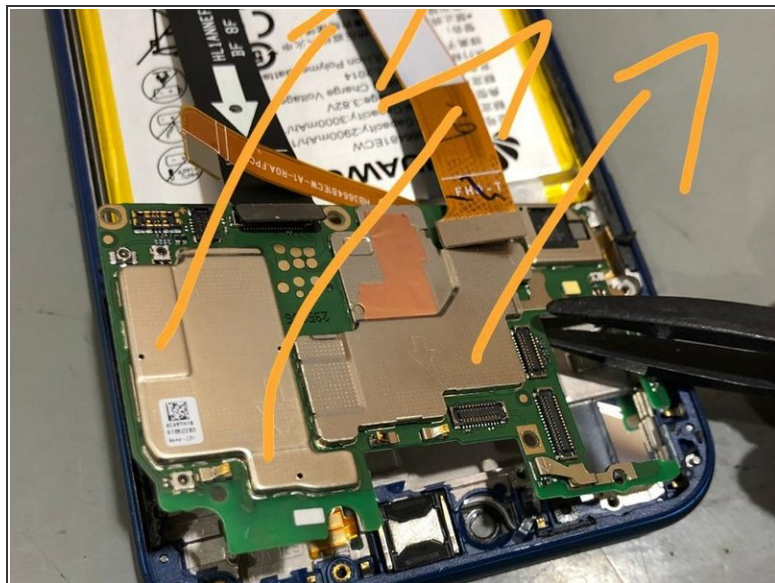
- Flip the Back Glass to the right and then unscrew the two Phillips screws holding the plate in place.
- Disconnect the Sub board flex along with the sensor flex, coaxial cable and battery flex.

Step 4 — Main board disassembly



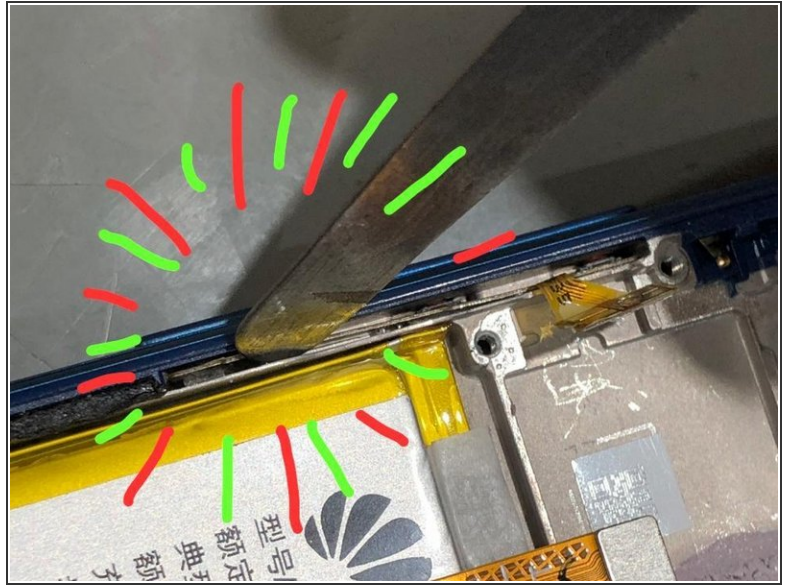
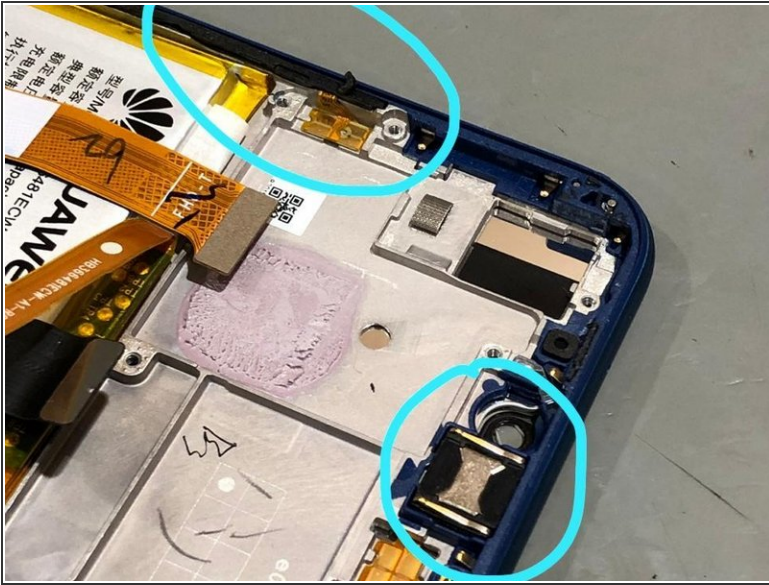
- Remove all the screws visible keeping the plates in place.
- Carefully unplug the camera connectors along with the screen connector.
- **The cameras are loose and don't have any adhesive making them stick.**

Step 5 — Lifting the Main Board



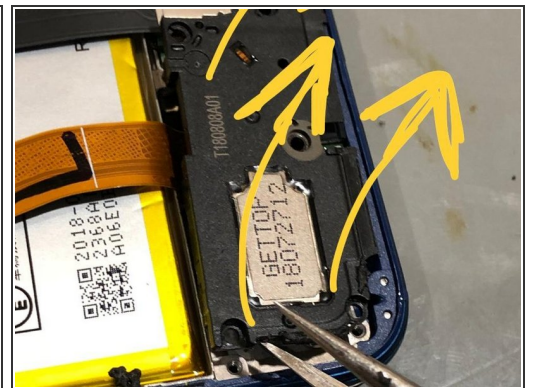
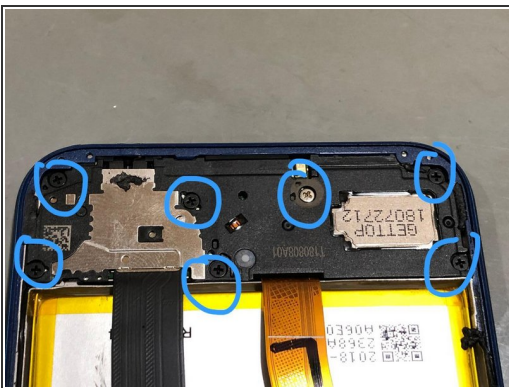
- The main board does have some thermal paste making it hard and sticky to remove.
- Heat up the front of the screen until it quite hot.
- Gently pry and snap the main board out of the frame.

Step 6 — Ear speaker and side keys



- Remember to remove the ear speaker and side keys if they are not included with your new frame.
- Gently remove the adhesive between the side key and the frame and lift up.

Step 7 — Removing the sub board



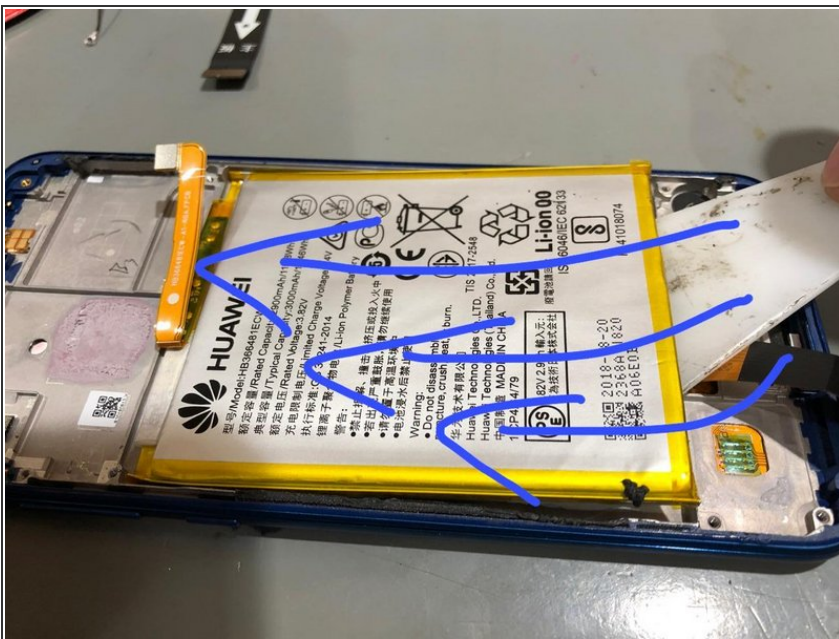
- Remove all the screws.
- The loud speaker unit does have some adhesive underneath it. Give it a good amount of heat to loosen up.
- Gently unclip and lift the unit out from the frame.
- **Watch out for the flex cables running from underneath it!.**

Step 8 — Removing the Sub Board Step 2



- Disconnect the sub board flex and the coaxial cable.
- Lift the sub board up and pull it towards you.

Step 9 — Removing the battery



- Apply a lot of heat from the front
- Use alcohol to loosen up the adhesive.
- Gently pry from underneath and slide until the battery is loose.
- **BE CAREFUL NOT TO BEND OR PUNCTURE THE BATTERY AS IT COULD LEAD TO AN EXPLOSION OR SMOKE EMITTING FROM THE BATTERY.**

Step 10 — Preperation



- Apply new adhesive to the back glass.
- If you are re-using the old frame make sure all the old adhesive is removed. Otherwise the back glass will not sit flush .

Step 11 — Reassembly



- Follow all the disassembly steps to reassemble the device.
- the last step would be to connect the fingerprint sensor and placing the plate covering the connectors back along with the two screws.

Step 12 — Done



- Power on the handset and test.

To reassemble your device, follow these instructions in reverse order.