



Huawei P9 Display Assembly with Frame Replacement

Replace the display assembly including the frame in your Huawei P9 smartphone.

Written By: Dominik Schnabelrauch



INTRODUCTION

Use this guide to replace the display assembly including the frame of your Huawei P9.

Before disassembling your phone, discharge the battery below 25%. The battery can catch fire and/or explode if accidentally punctured, but the chances of that happening are much lower if discharged.



TOOLS:

- [SIM Card Eject Tool](#) (1)
- [Suction Handle](#) (1)
- [iFixit Opening Picks set of 6](#) (1)
- [Spudger](#) (1)
- [Phillips #00 Screwdriver](#) (1)
- [Tweezers](#) (1)
- [P2 Pentalobe Screwdriver iPhone](#) (1)



PARTS:

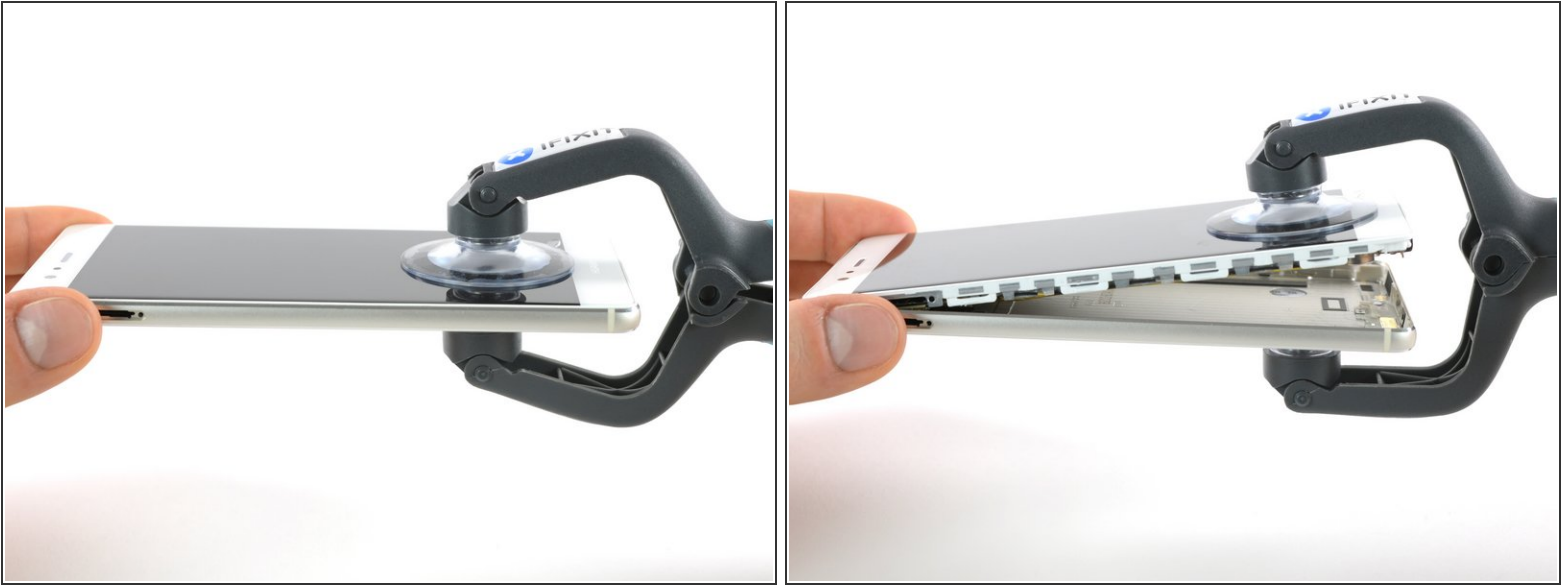
- [Huawei P9 Screen](#) (1)




Step 1 — Back Cover



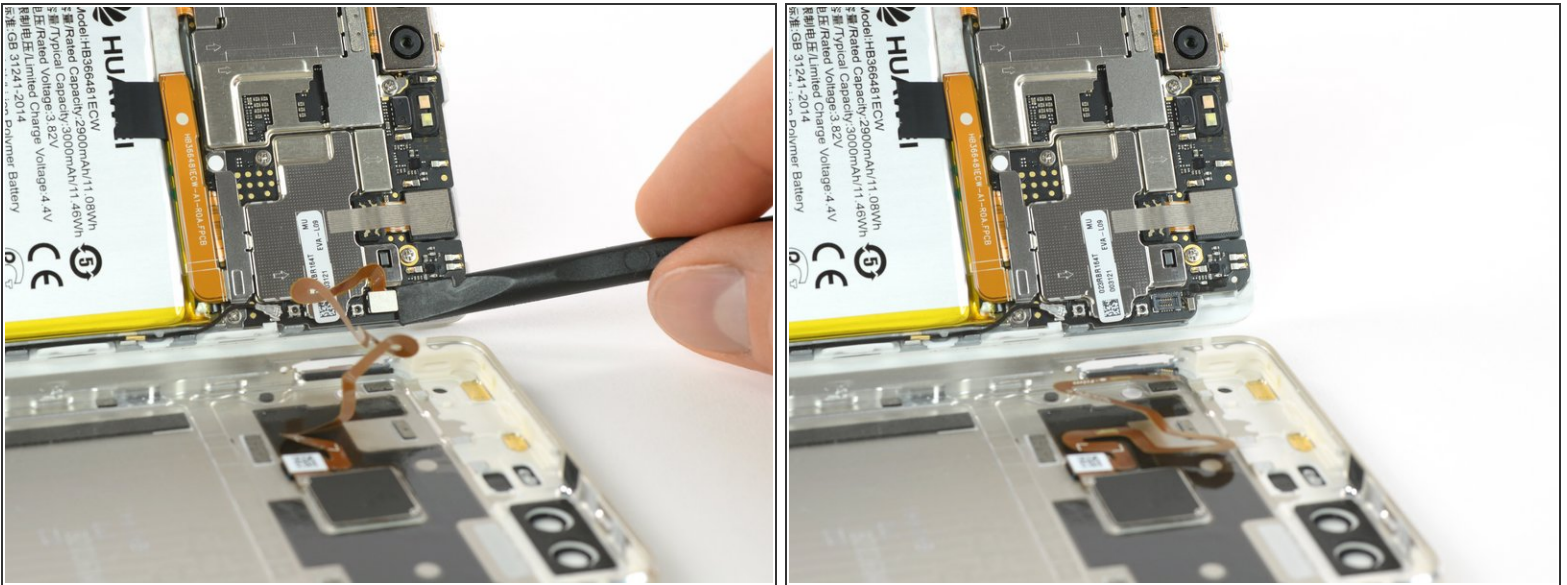
- First switch off your phone and remove the SIM card tray.
- Unscrew the two Pentalobe P2 screws located at the bottom next to the device's USB C port.
- ⓘ If the screen is cracked you might want to use some tape to protect your eyes from glass shreds and get a better grip to open the phone.

Step 2



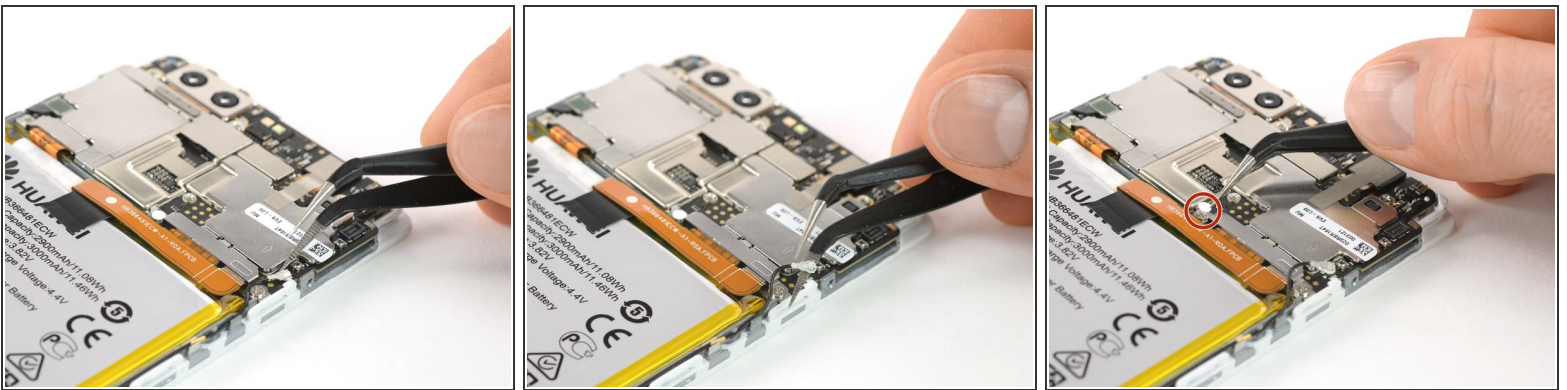
-  Avoid to lift only the display instead of the whole phone assembly as doing so may cause damage to the screen.
- Use an iSclack or a suction handle to separate the phone assembly from the rear panel.
-  In case you can't manage to lift the phone assembly out of the rear panel you can insert the pointed end of a spudger in the headphone jack opening and press the phone assembly upwards until you create a gap between assembly and rear panel. Then use the spudger to lever the phone assembly out of the panel.
-  Don't remove the rear panel completely yet. There is a cable connected to it! It is running from the finger print sensor to the display unit.

Step 3 — Fingerprint sensor



- Disconnect the fingerprint sensor using a spudger.

Step 4 — Battery



- Unplug the antenna cable.
- Remove the sticker that sits on top of the screw.

Step 5



- Unscrew the two Phillips #00 screws that hold the metal plate in place.
- The plate, which is covering the battery connector, has two little hooks on each side. Use a tweezer to free them and unhinge the plate by carefully moving it upwards.

Step 6



- Now you can unplug the battery connector and bend it aside.
- The EVA-L09 model has an NFC antenna adhered onto the battery.
 - ❗ If you are just removing the battery to get to the display, you can leave the NFC on the battery.
 - ⚠ Mark its place on the battery with a felt pen for reassembly. Carefully peel it off and make sure not to rip or crease the antenna.
 - ★ For reassembly, place the NFC antenna on the battery where it was before so its contacts align with their counterparts.

Step 7



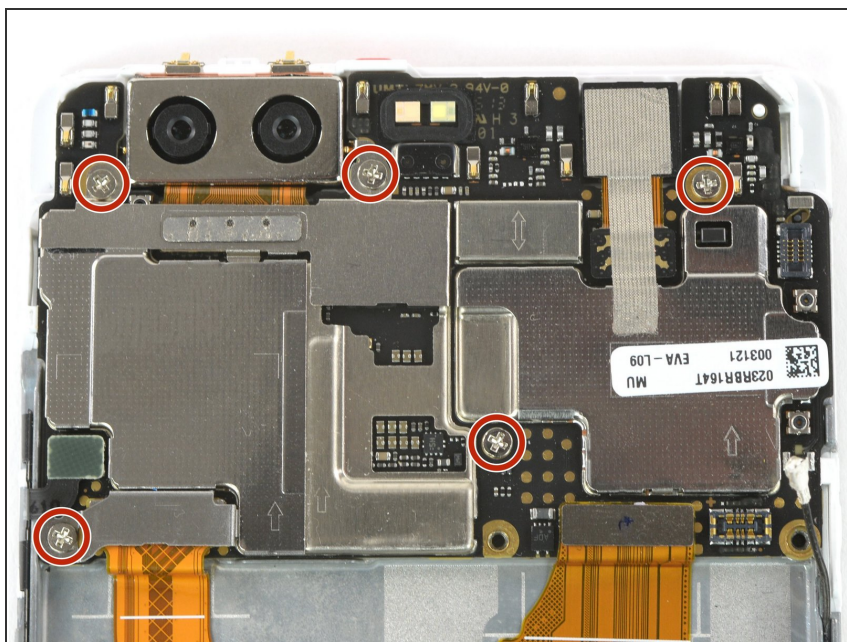
- Free the ends of the adhesive pull tabs to get a good grip on them.

Step 8



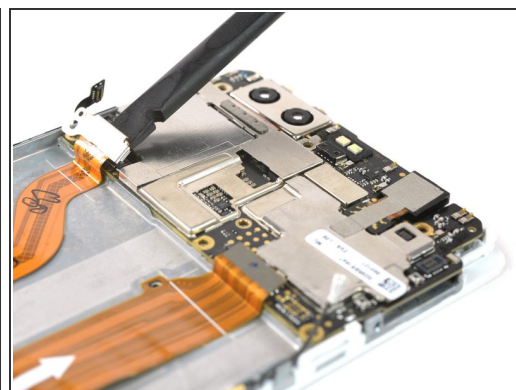
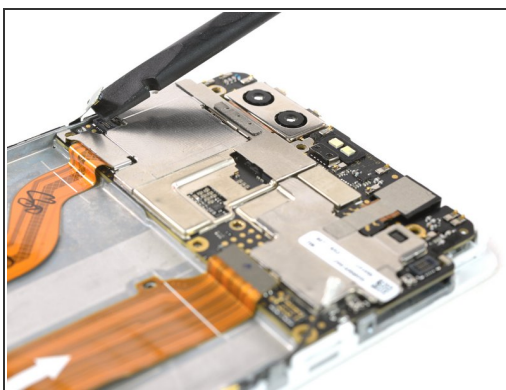
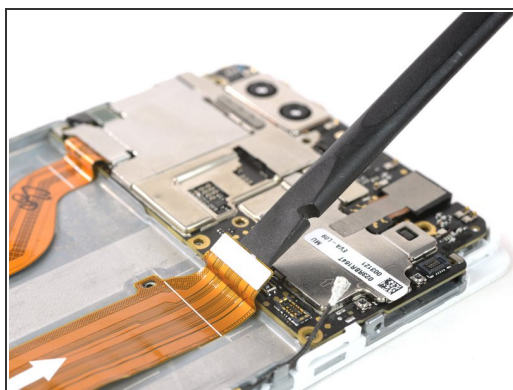
- The battery is secured with three pieces of adhesive, a removable pull-tab in the center, and on the SIM tray side. A third piece of adhesive on the button side has no pull-tab.
- Pull the adhesive tabs in a slow constant movement to free the battery.
- ⓘ Should those adhesive tabs snap, you might want to use an iOpener to heat and soften them a little bit so you can pry out the battery with a spudger.
- ⚠ There are two cables running directly underneath the battery. Take care not to damage them when prying with a spudger! You can see their position in the last picture.
- Slowly lift the battery toward the button side and free it from the remaining hidden piece of adhesive.
- ✦ When reassembling your phone replace old adhesive with [double-sided tape](#) or [pre-cut adhesive strips](#).

Step 9 — Display Assembly with Frame



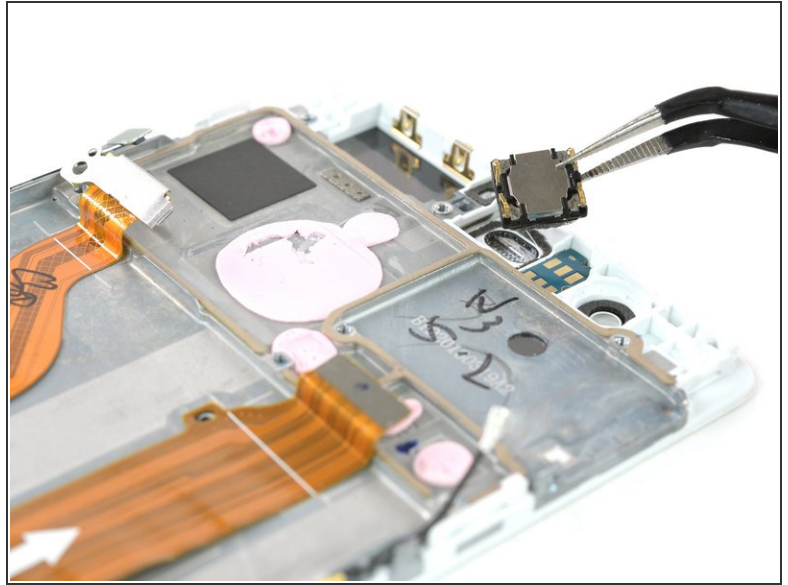
- Remove the other five Phillips #00 screws from the motherboard.

Step 10



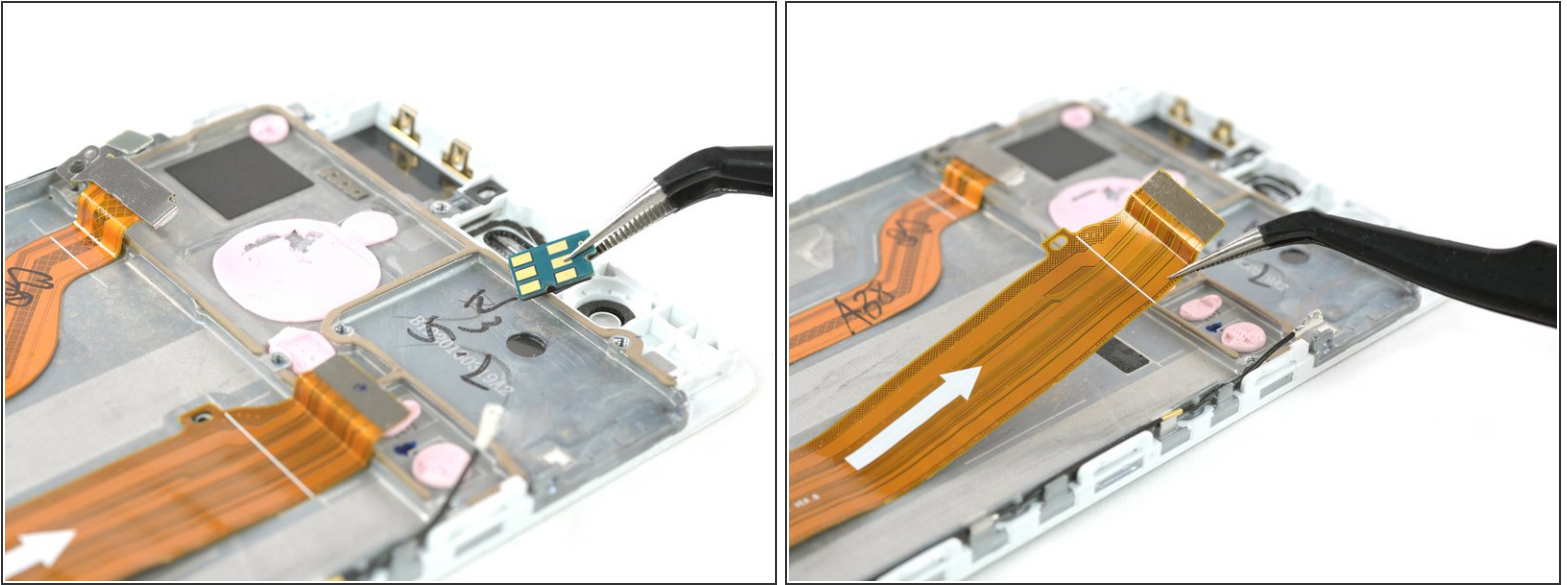
- Disconnect the motherboard flex cable as well as the power and volume button cable.
- Unplug the LCD screen flex cable.

Step 11



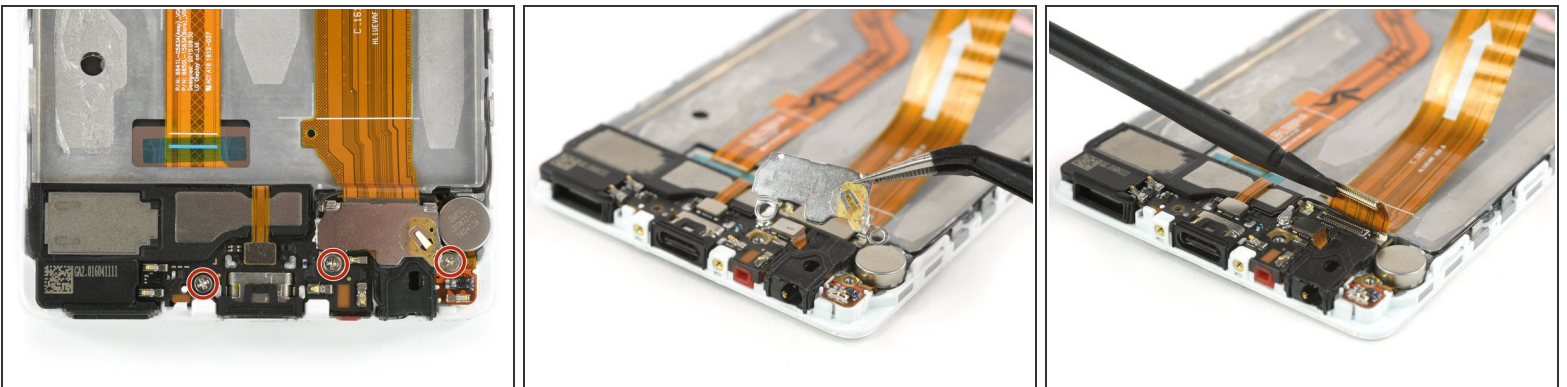
- Remove the motherboard assembly.
- Remove the earpiece speaker (mind adhesive underneath).

Step 12



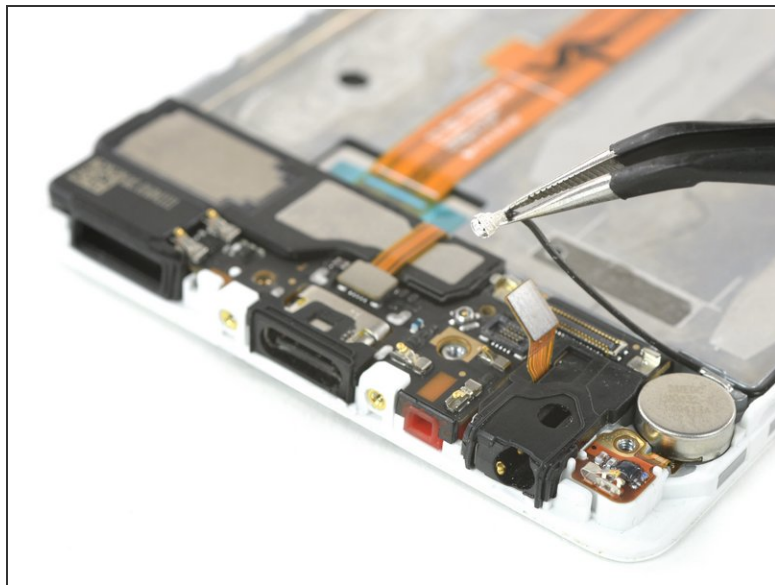
- Remove the proximity sensor module from its bracket.
 - ❗ If the new display unit does not have the rubber gasket of the proximity sensor already installed you have to transfer it from the old one.
- Carefully peel off the motherboard flex cable.

Step 13



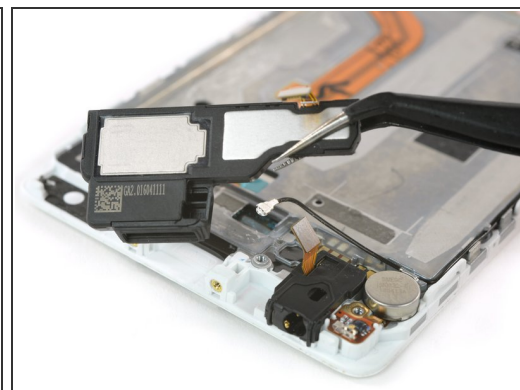
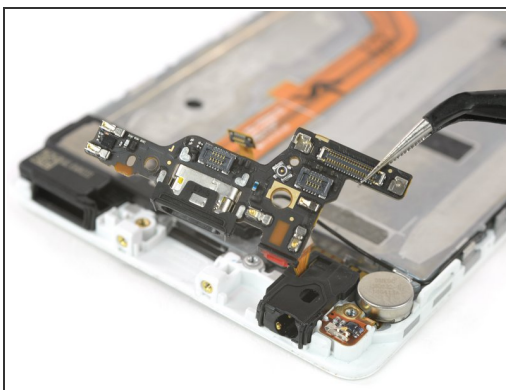
- Remove the three Phillips #00 screws from the daughterboard.
- Carefully remove the metal bracket. The headphone jack connector might stick to it.
- Unplug the motherboard flex connector and put the cable aside.

Step 14



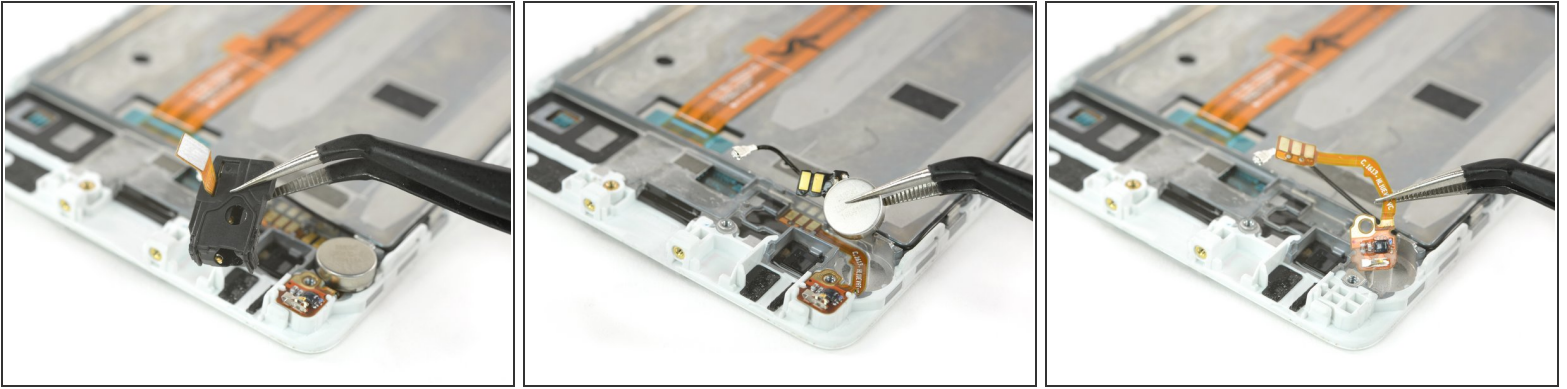
- Disconnect the headphone jack flex connector.
- Unplug the antenna cable.

Step 15



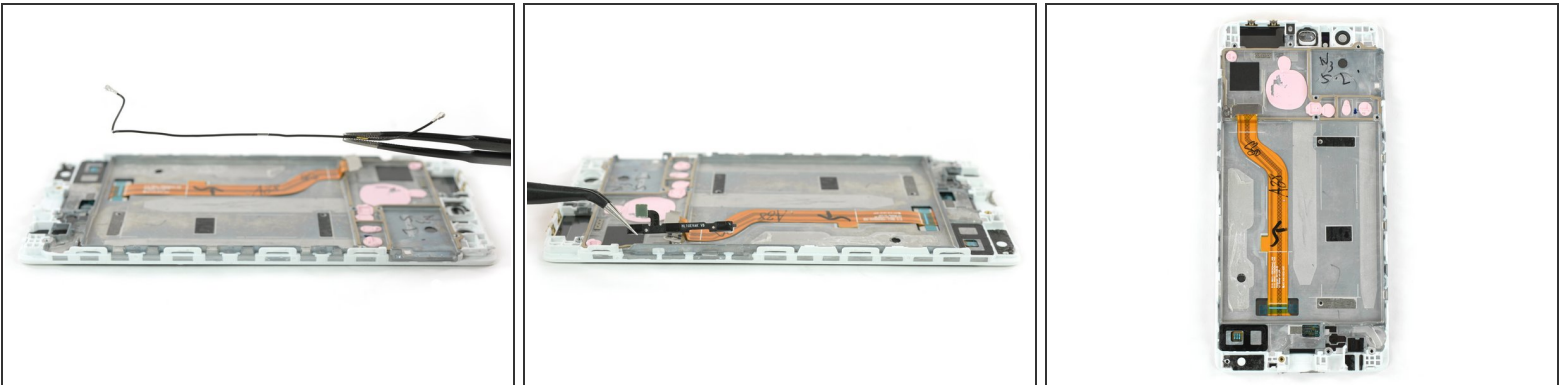
- Unplug the connector of the loudspeaker.
- Remove the daughterboard.
- Pry the speaker off of the adhesive holding it to the display assembly.

Step 16



- Remove the headphone jack out of its recess.
- Pry the vibration motor out of its adhered recess in the display assembly.
- Carefully remove the fragile contact cable from the adhesive holding it to the frame.

Step 17



- Remove the antenna cable and the power and volume bottom cable on either side.
- ☑ Inspect the new part carefully and compare it to the old one. There might be some small parts that have to be transferred.
- ☑ On the back of the motherboard there are thermal pads (pink rubber-like gobs) for heat dissipation. If these thermal pads broke, are too dried out or stick to the old display assembly you might need to [apply new thermal pads](#) to the new display assembly or the motherboard.

To reassemble your device, follow these instructions in reverse order.