



# Huawei P9 Lite Motherboard Replacement

Replace the motherboard in your Huawei P9 Lite

Written By: Tobias Isakeit



---

# INTRODUCTION

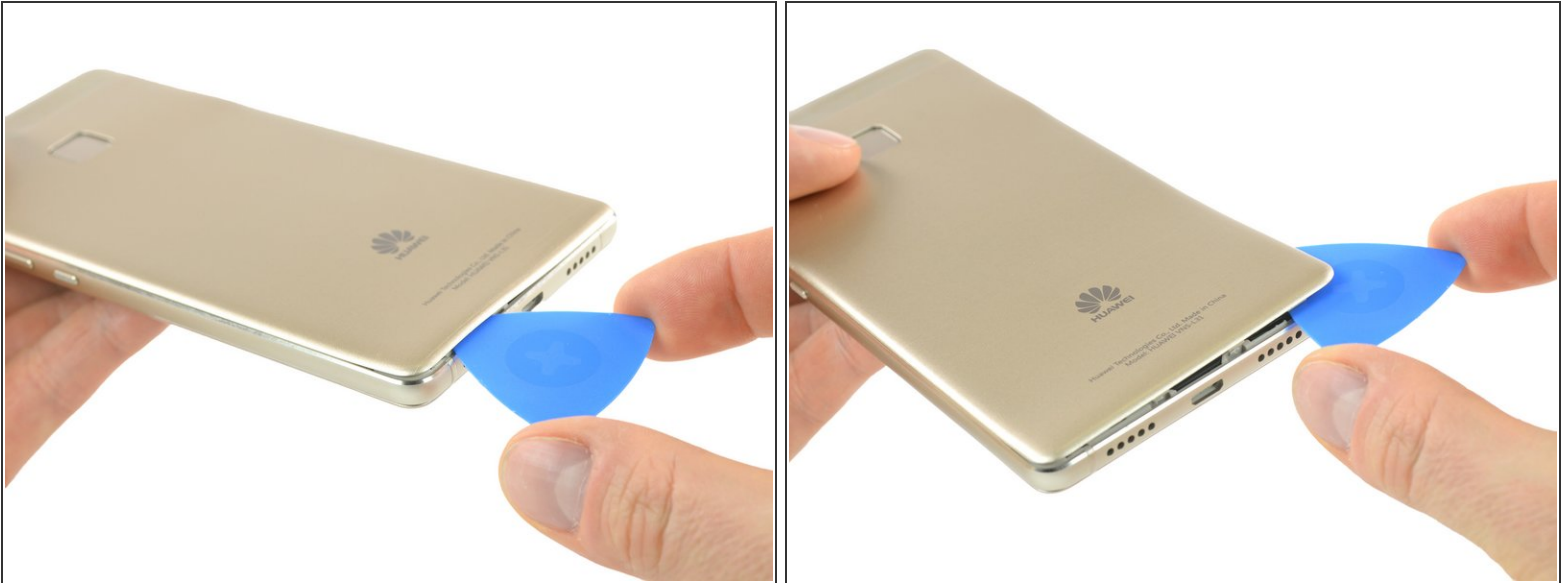
Use this guide to replace the motherboard in your Huawei P9 Lite.



## TOOLS:

- [iFixit Opening Picks set of 6](#) (1)
  - [Plastic Cards](#) (1)
-

## Step 1 — Back Cover



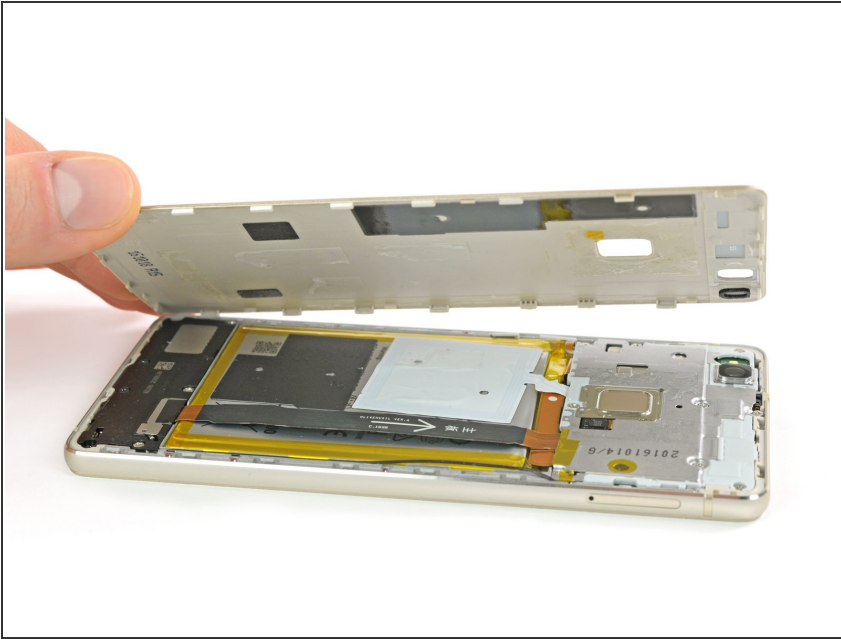
- Use an opening pick to unclip the rear cover, starting from the bottom corner.
- Work your way around counterclockwise and carefully pry the plastic tabs open one by one.

## Step 2



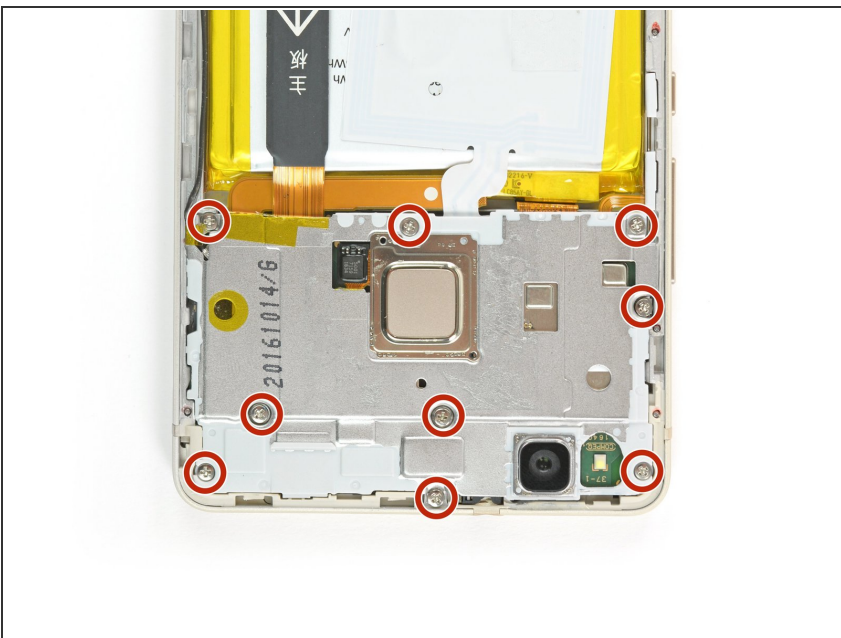
- ⓘ There is adhesive underneath the back cover that holds it to the battery and the metal plate at the top.
- ⚠ Be careful with the flex cable at the right hand side.
- Twist the opening pick to lever the back cover away and loosen it from the adhesive.

### Step 3



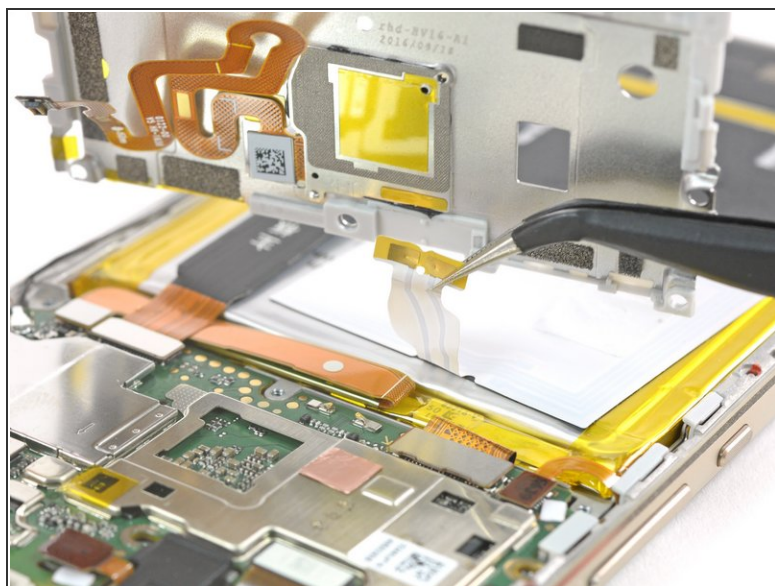
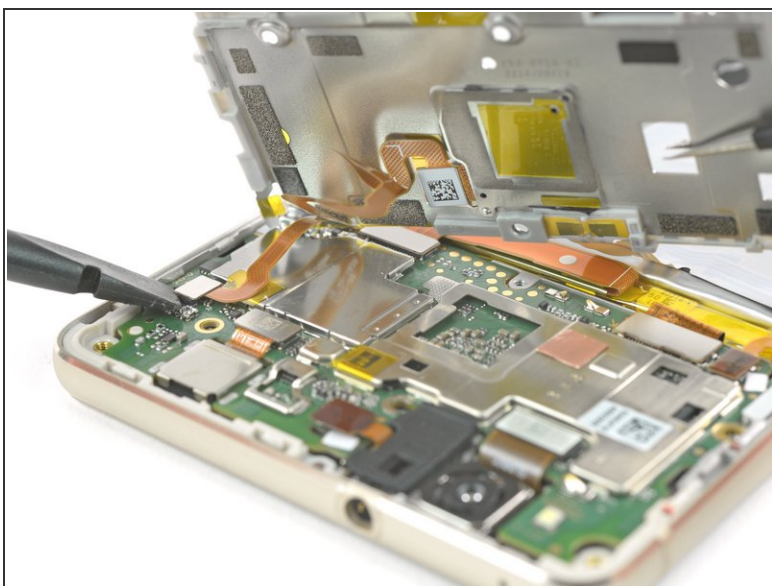
- When the back cover is freed from the adhesive you can pop it off by hand completely.

### Step 4 — Motherboard Shield



- Remove the nine Phillips #00 screws that secure the metal shield plate.
- ⓘ Some screws may be covered with tamper proof stickers. Remove them to ensure a proper seating for your driver.

## Step 5



 Do not remove the shield plate yet, it is attached by a connector and an adhered cable.

- Use a spudger to disconnect the fingerprint sensor from the motherboard.
- Peel the NFC antenna cable off of the metal plate.

## Step 6 — Motherboard



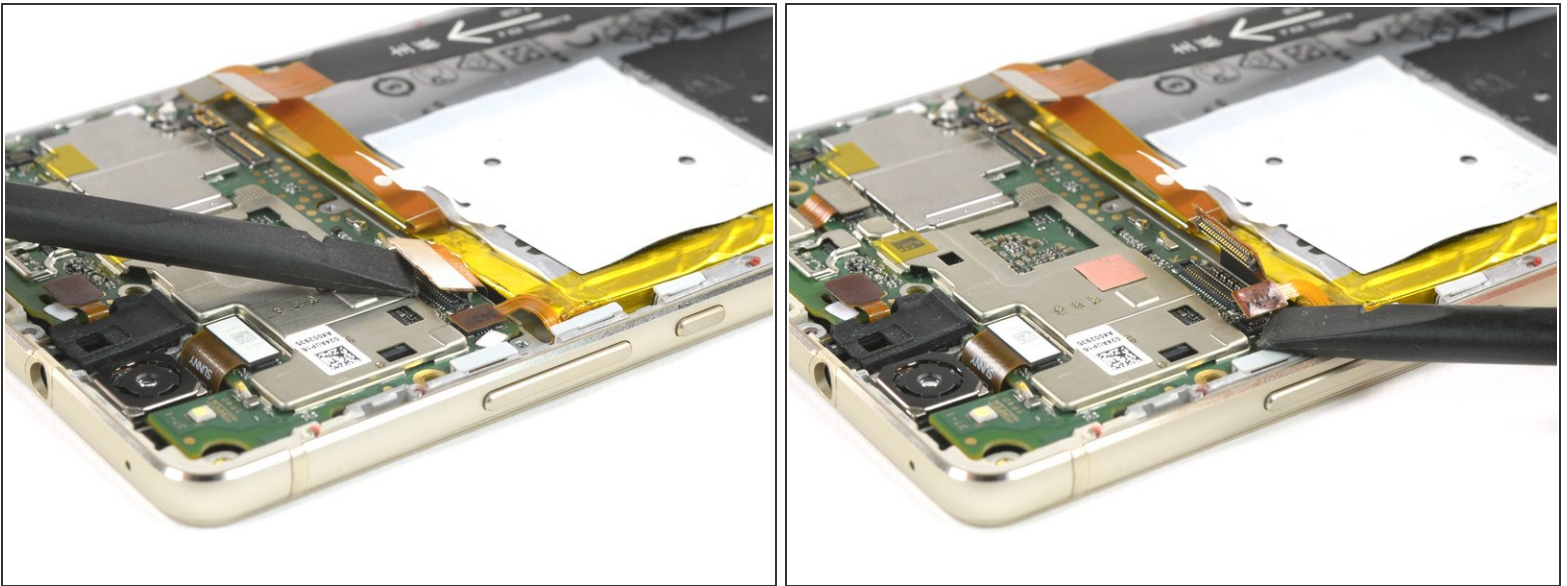
- Remove the SIM card tray.

## Step 7



- Disconnect the motherboard flex, the battery flex and the antenna cable.

## Step 8



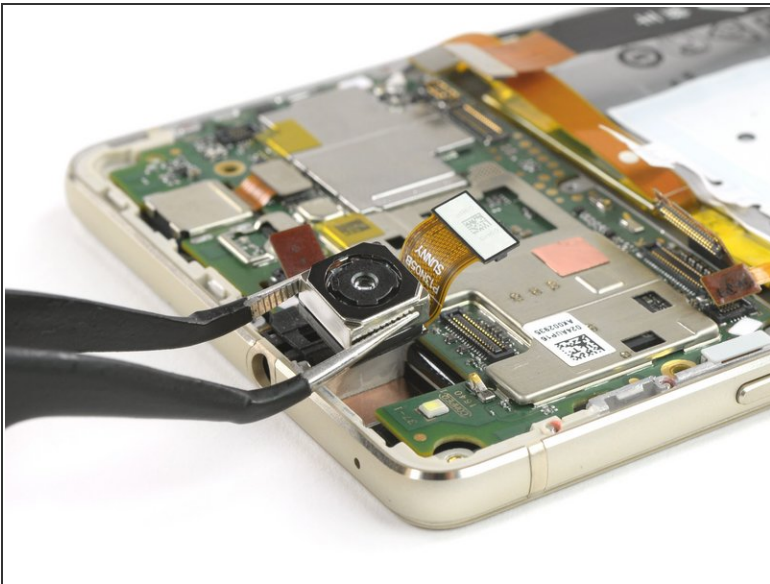
- Disconnect the display flex and the power and volume button cable.

## Step 9



- Unplug the rear camera and the headphone jack.

## Step 10



- Take the camera and the headphone jack out of their recesses.

## Step 11



- Use a spudger to lift the motherboard carefully.
- Remove the motherboard assembly.
- ☑ On the back of the motherboard there is a thermal pad (pink rubber-like gob) for heat dissipation. If you are about to replace the display assembly, and the thermal pad broke or is too dried out, you might want to [replace it with a new one](#).

To reassemble your device, follow these instructions in reverse order.