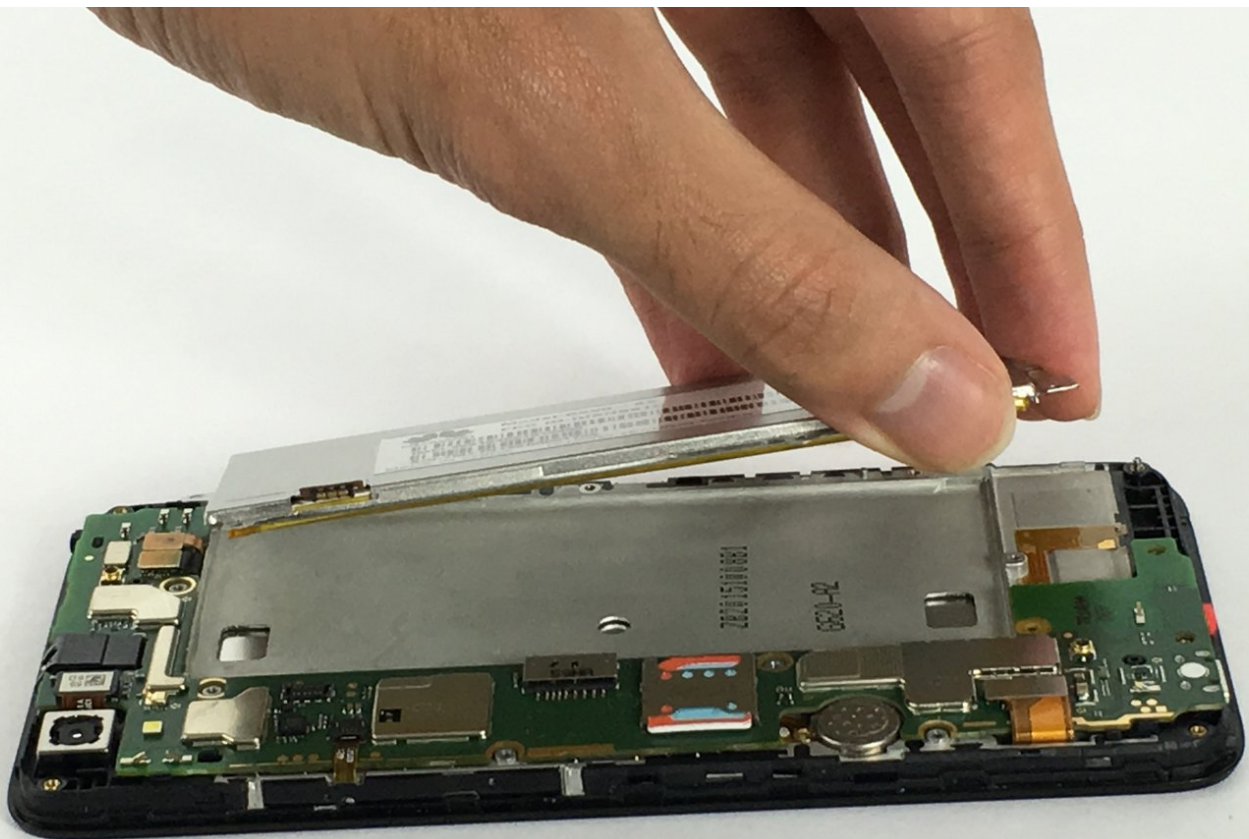




Huawei SnapTo G-620 Battery Replacement

If your Huawei SnapTo G-620 fails to charge the battery may need to be replaced. This guide shows how to replace your SnapTo's battery.

Written By: Brian Omer Uzan



INTRODUCTION

If your Huawei SnapTo G-620 fails to charge the battery may need to be replaced. This guide shows how to replace your SnapTo's battery.

TOOLS:

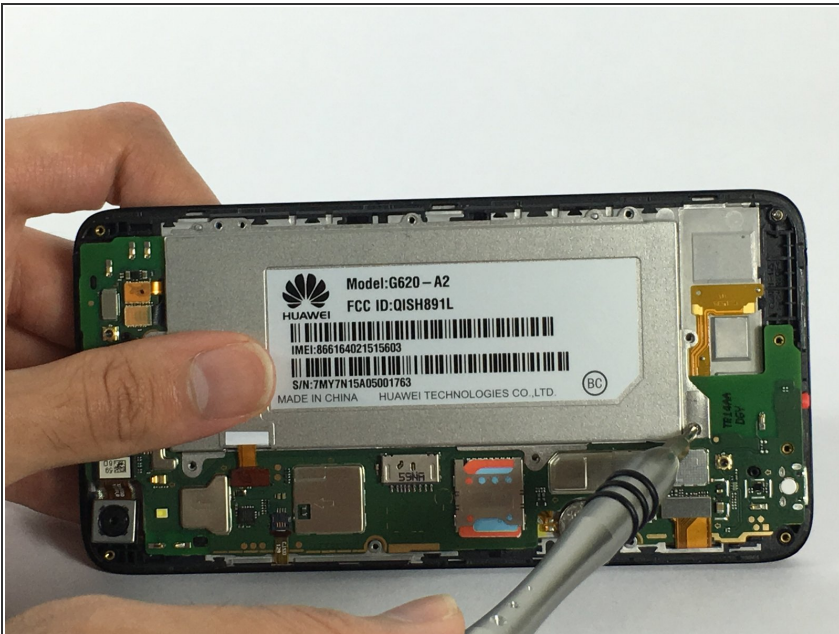
- [iFixit Opening Tools](#) (1)
 - [Metal Spudger](#) (1)
 - [64 Bit Driver Kit](#) (1)
-

Step 1 — Battery



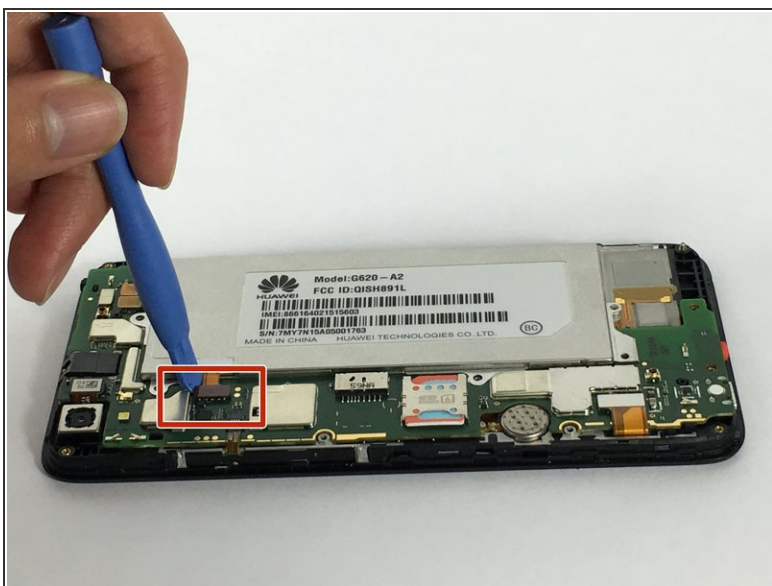
- Pry open the back cover with your fingernail, using the divot to the lower left hand corner.
- Remove all fifteen 4mm Phillips J00 screws on the back panel.
- Using a metal spudger or your fingernail, remove the back panel.

Step 2



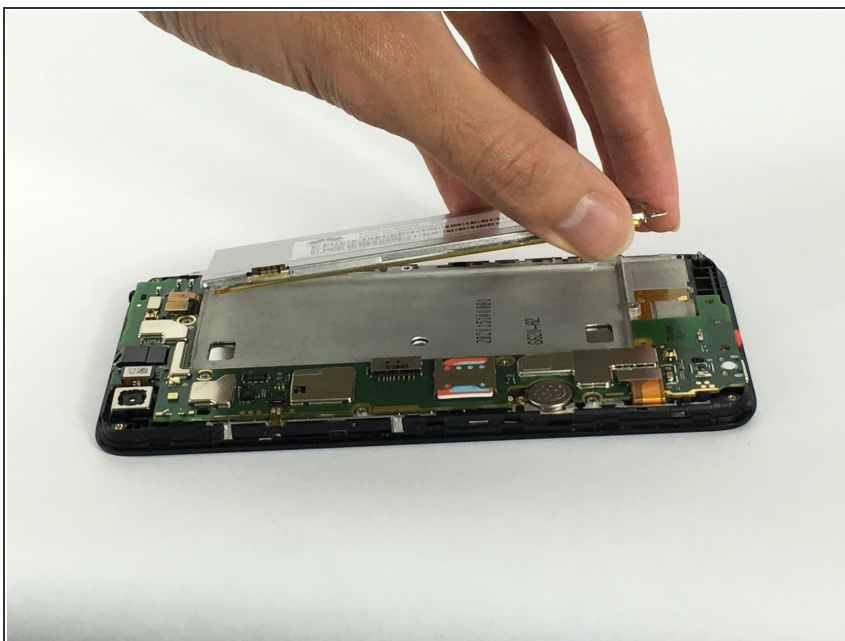
- Remove the pictured 4mm Phillips J00 screw.

Step 3



- Use a plastic opening tool to remove the pictured flat-top connector.

Step 4



- Remove the battery.

To reassemble your device, follow these instructions in reverse order.