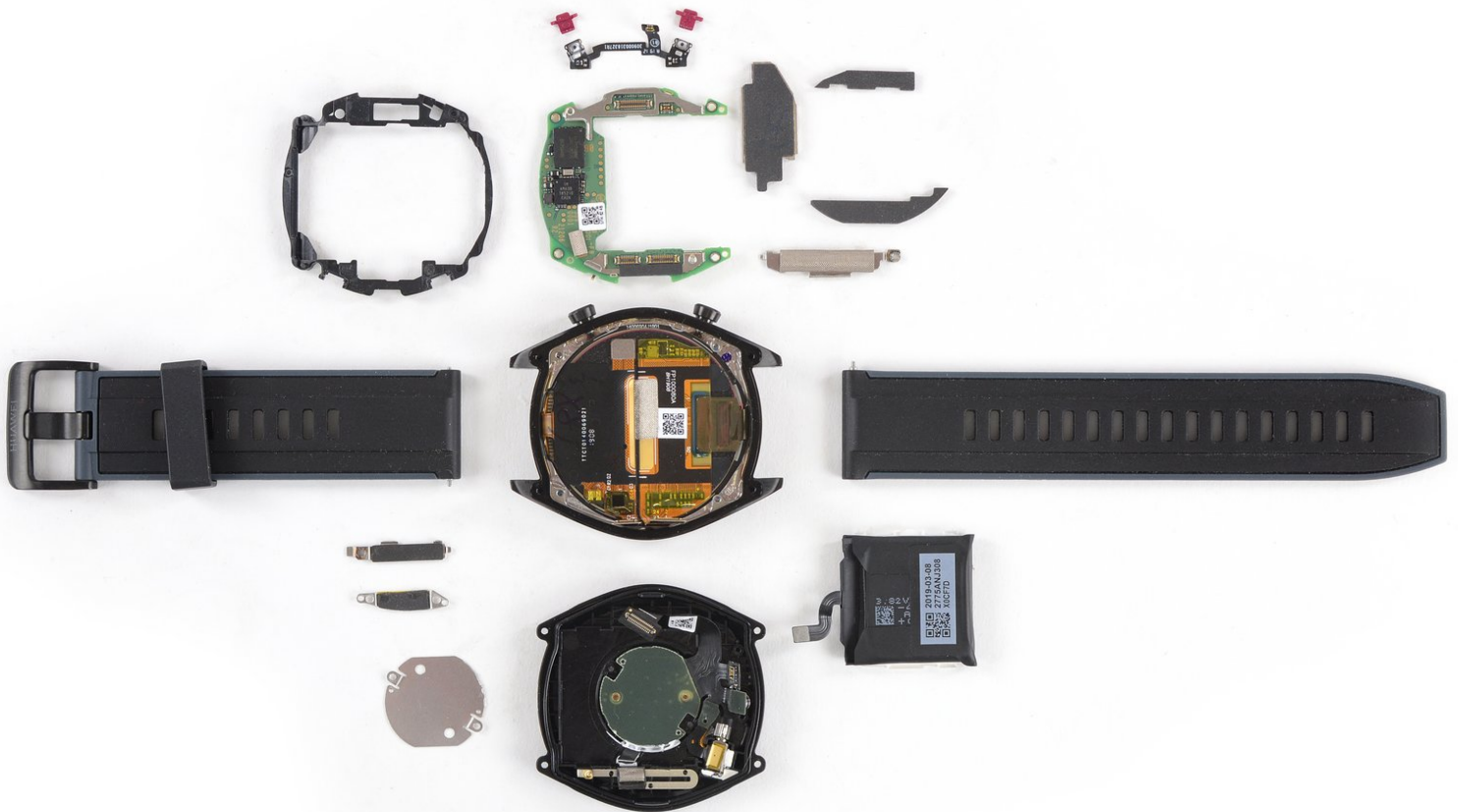




# Huawei Watch GT Repairability Assessment

Repairability assessment for the Huawei Watch GT from June 2019

Written By: Dominik Schnabelrauch



## INTRODUCTION

Repairability assessment of the Huawei Watch GT, performed July 2019. The model assessed is a black stainless steel FTN-B19.

---

### TOOLS:

- [iOpener](#) (1)
  - [iFixit Opening Picks set of 6](#) (1)
  - [Phillips #00 Screwdriver](#) (1)
  - [Spudger](#) (1)
  - [Tweezers](#) (1)
-

## Step 1 — Huawei Watch GT Repairability Assessment



- Exterior reference photos.

## Step 2



- Two spring bar pins attach the watchbands to the body and allow for easy removal.
- Reference shots of the front and back of the Huawei Watch GT body.

### Step 3



- The plastic rear cover of the Huawei Watch GT is secured by 4 Torx T3 screws (3.6 mm length).
- Applying an opening pick or fingernail to the small notch at the upper edge of the watch is enough to separate the bottom cover.
- At this point it's possible to open the watch but the display and back cover are still connected by a multi purpose interconnect flex cable.

### Step 4



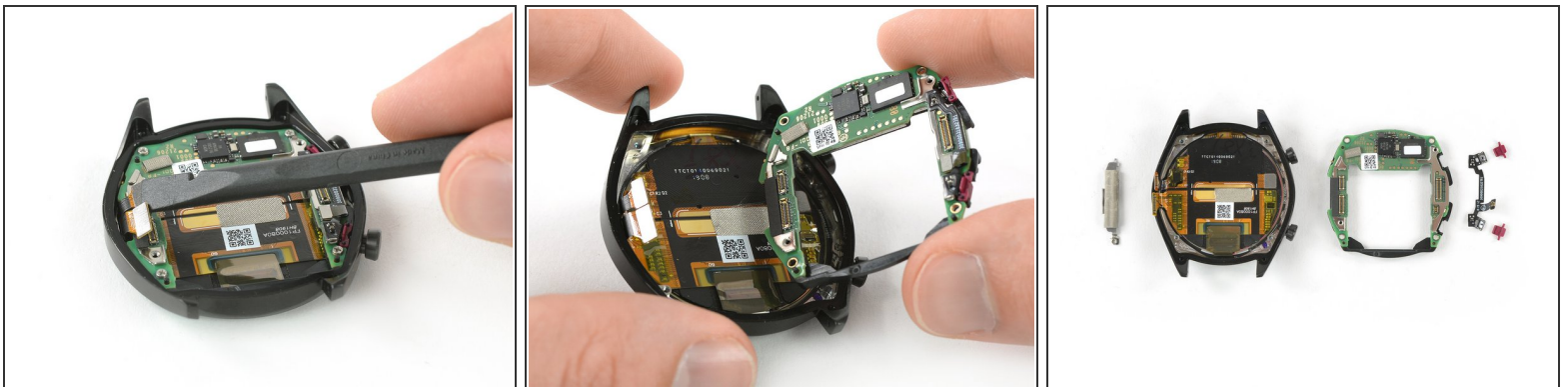
- We go by the book and unplug the battery first by removing two Phillips #00 screws (2.9 mm length) and a metal shield.
- The battery is held in place by mild adhesive and comes out after some gentle heating and prying.

## Step 5



- Unplugging the interconnect cable—carrying the vibration motor and the heart rate sensor—requires removing another pair of screws and a small metal shield.
- ❗ Seems like the interconnect flex cable can't be removed from the rear cover—bummer.

## Step 6



- After removing four more Phillips #00 screws and disconnecting the screen and digitizer connector as well as the side button cable, the motherboard can be removed.
- The flex cable of the two side buttons is glued to the motherboard with mild adhesive and can be peeled off.



## Step 7



- Ambiq Micro [Apollo3 Blue](#) MCU with ARM Cortex-M4 Processor
- Winbond 1 Gbit serial NAND flash
- NXP 80T35 36 04 SSD902, probably NFC controller
- Broadcom BCM47752 GPS receiver

## Step 8



- The screen and digitizer of the Huawei Watch GT are glued to the display frame with strong adhesive and can not be removed without causing damage to them.
- So replacing the screen means replacing the complete top part of the watch.

## Step 9



- The Huawei Watch GT earns a **5 out of 10** on our repairability scale (10 is the easiest to repair):
  - Watch band replacements are fast and simple.
  - Easy glueless opening procedure.
  - The battery can be removed independently. The removal procedure needs some prying but isn't too bad.
  - The screen and the digitizer can't be removed separately.
  - The sensor assembly including the vibration motor is soldered to the back cover.