



Hyla NST Vacuum Cleaner Power Cord Replacement

This guide shows how to replace a broken or damaged power cord on a Hyla NST vacuum cleaner.

Written By: Reiner Bühl



This document was generated on 2020-04-06 09:37:53 AM (MST).



TOOLS:

- [Kreuzschlitzschraubendreher PH 2](#) (1)
- [Metal Spudger](#) (1)
- [New Item](#) (1)



PARTS:

- [New Item](#) (1)

Step 1 — Remove the handle face plate



- Use a spudger to lift the face plate on the handle and then pull it straight up to remove it.

Step 2 — Remove cable cover



- Under the face plate you can find two Philipshead screws. Remove them and then the handle and the cable cover can be removed.

Step 3 — Remove case cover



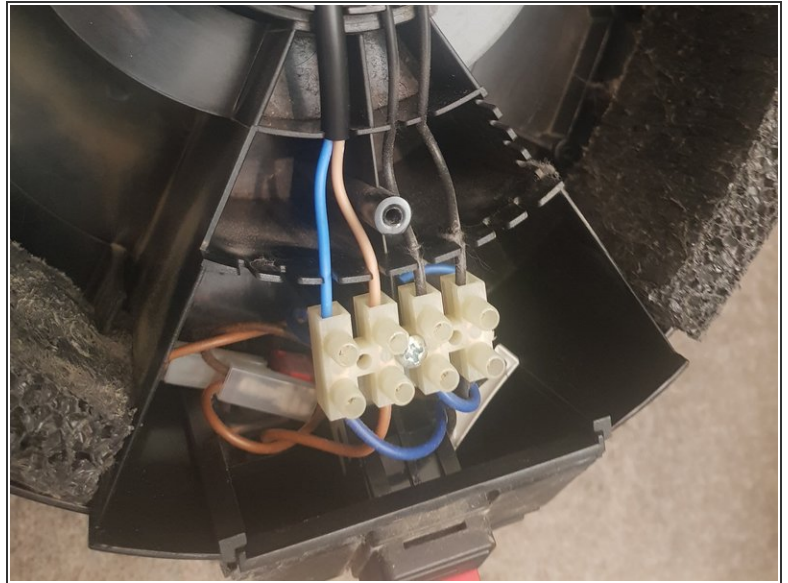
- Now the case cover can be removed by firmly pulling it up.

Step 4 — Remove strain relieve



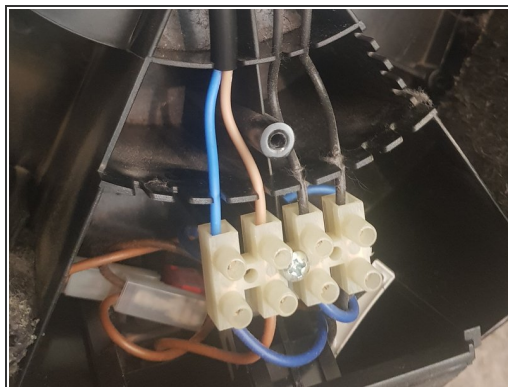
- Now the strain relieve can be removed by unscrewing the two Philips head screws.

Step 5 — Remove the power cord



- Unscrew the leads of the old power cord from the screw terminal and remove the old power cord.

Step 6 — Connect the new power cord



- Ensure that the replacement power cord has ferules on both leads.
- Slide the new cable through the cable inlet and connect it to the screw terminal. connect blue to blue and brown to brown lead. Route the new cable in the same cable grooves that the old cable was sitting in.
- Note: The two black leads on the screw terminal connect directly to the motor winding. If you suspect a bad motor winding, you can test it here. A good motor should have a resistance of approximately 10 Ohms if you measure with a multimeter.

Step 7 — Reassembly



- Now reassemble the device by following the steps in reverse order starting at step 4.

Follow the described steps in reverse order to reassemble the device again.