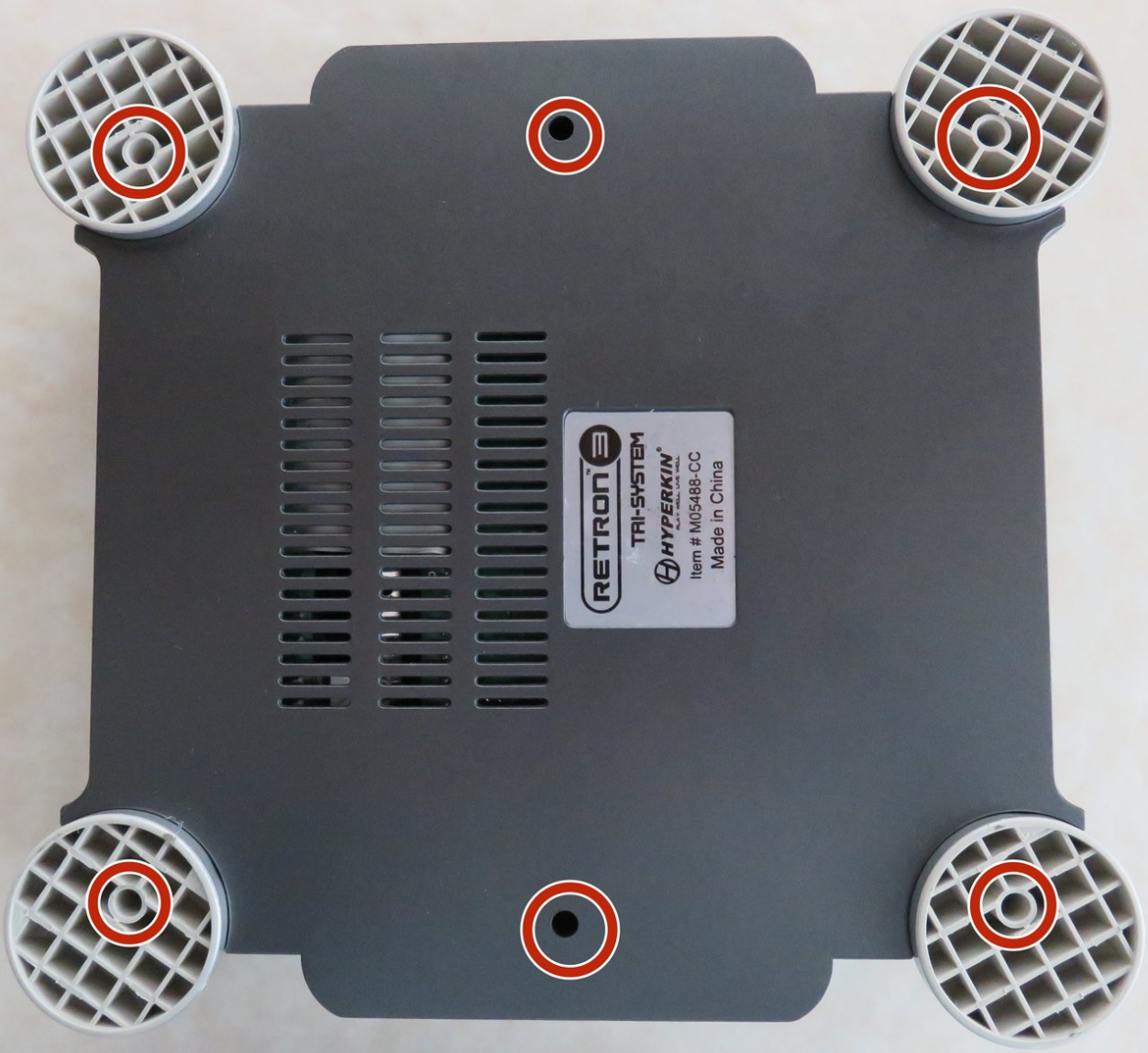




Hyperkin Retron 3 Disassembly

An inside look at one of the more popular clone systems which allows you to play NES/SNES/Genesis games all in one system.

Written By: Navy Vet 2015



INTRODUCTION

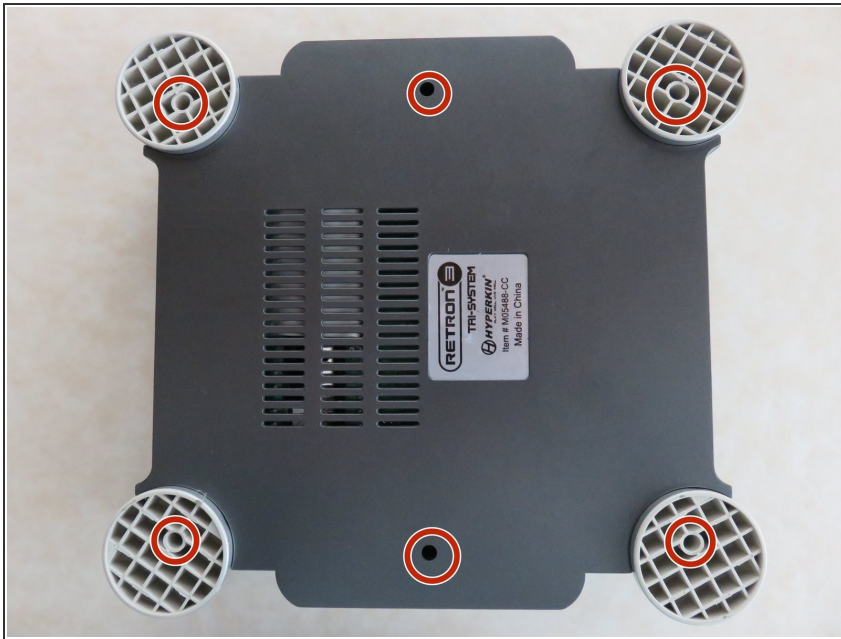
This guide will show you how to properly open up your Hyperkin Retron 3 console in the event you need to make repairs.



TOOLS:

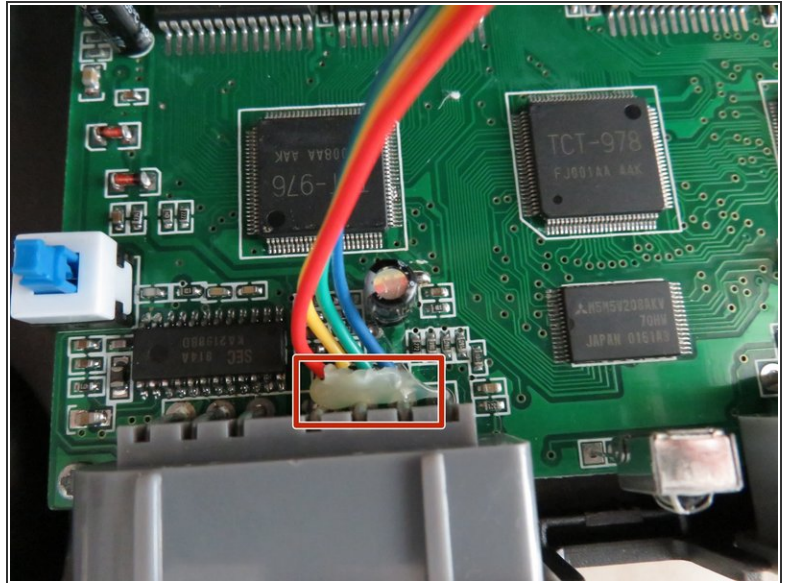
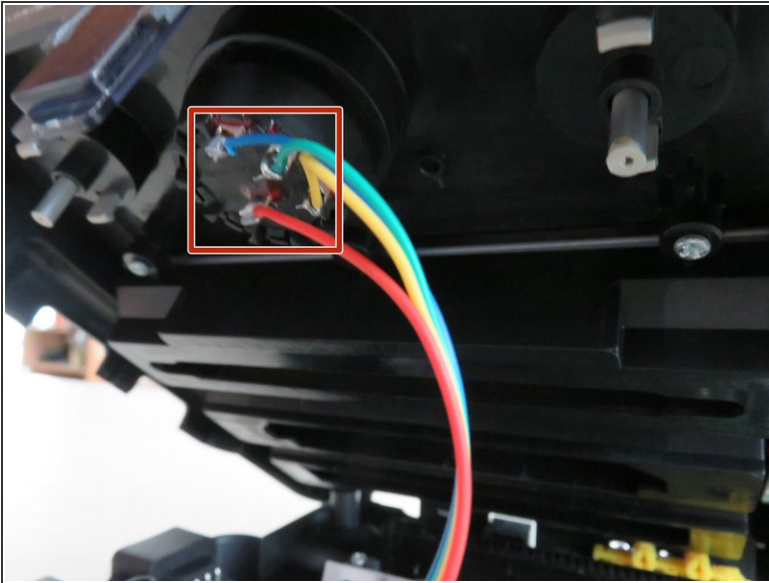
- [Phillips #1 Screwdriver](#) (1)
 - [Anti-Static Wrist Strap](#) (1)
-




Step 1 — Remove 6 screws located on the bottom of the system



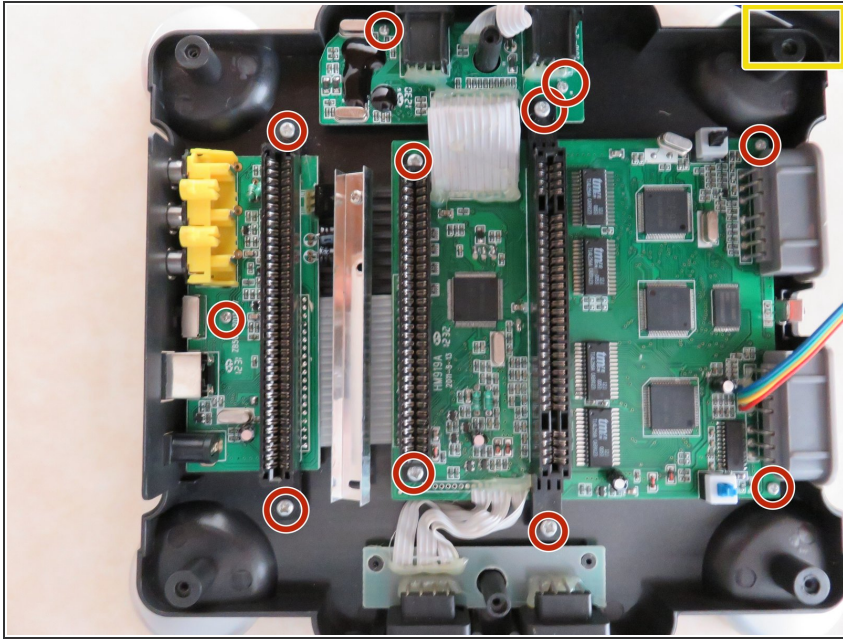
- ✦ First and foremost, be sure to unplug both power and AV/S-Video cables and remove any games that may be plugged into the console.
- In order to get into the system you're going to have to remove the 4 rubber boots on the bottom of the console in order to access 4 hidden screws underneath. The other two screws are already accessible.
- ⚠ These rubber boots are cheap and not easily reusable if they become stuck to each other or other items. I completely removed mine and because they weren't reattached right away they became stuck to each other and trying to pull them apart causes them to rip. In my case, I'm not particularly concerned if they are there or not and replacements
- ⚠ shouldn't be hard to find online I'd imagine.
- ⓘ If you'd like to avoid removing the boots utilize the picture provided to simply poke your screw driver threw the boot where the screw would be located. It might be tricky as you're looking for the only circle surrounded by several squares.

Step 2 — Lift top half of system shell



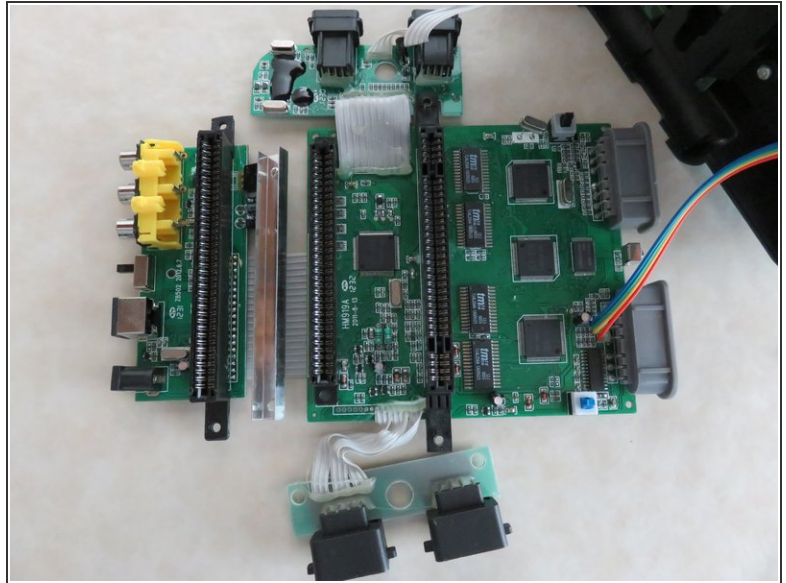
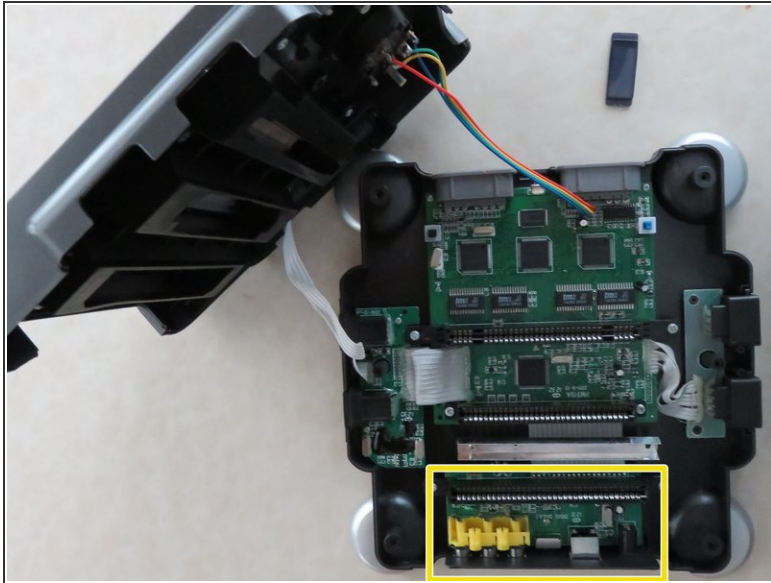
-  DO NOT ATTEMPT TO COMPLETELY SEPARATE THE TWO HALVES AS THEY ARE CONNECTED VIA THE SYSTEM SWITCH DIAL ON THE UPPER SHELL AND THE MAIN PCB.
-  The cables have been glued down at the connection points as well. The upper shell and PCB unit don't need to be completely separated in order to get in and repair the system although it would make it easier.
-  Unless you are confident in removing this glue without causing damage and your soldering skills I don't advise trying to separate the two.

Step 3 — Remove screws securing the PCBs to lower shell



- i** I find it easiest to prop up the top shell on the front right corner of the system. If you're using a flat surface it can stand by itself and there's enough slack in the Genesis PCB and Dial Switch cables to allow it to be positioned in such a way.
- You can barely see it but the upper shell is standing upright on the front right corner.
- There are 11 screws that need to be removed in order to remove the entire PCB unit.
- i** If the IR lens cover pops out at this point don't worry about it. It can be easily reinstalled during the reassembly process.

Step 4 — Remove PCBs from lower shell



- ☞ The top shell won't be far away during this repair. Find a few objects to keep it upright or out of your way.
- The AV/Power/NES PCB will be the last to remove during disassembly and first to replace during reassembly.

To reassemble your device, follow these instructions in reverse order.