



Hyundai H-150 Teardown

This guide will go through all the steps necessary to open up the Zapp Hyundai H-150

Written By: Nicolay



INTRODUCTION

Chip view not available due to low quality photos. I'll get on that asap.



TOOLS:

- [T6 Torx Screwdriver](#) (1)
 - [Spudger](#) (1)
-

Step 1 — Hyundai H-150 Teardown



- We'll start with a preview of the phone. Front, back and side view are shown here.

Step 2



- The battery is removed easily. Just pull down the part from the back and the battery goes out.

Step 3



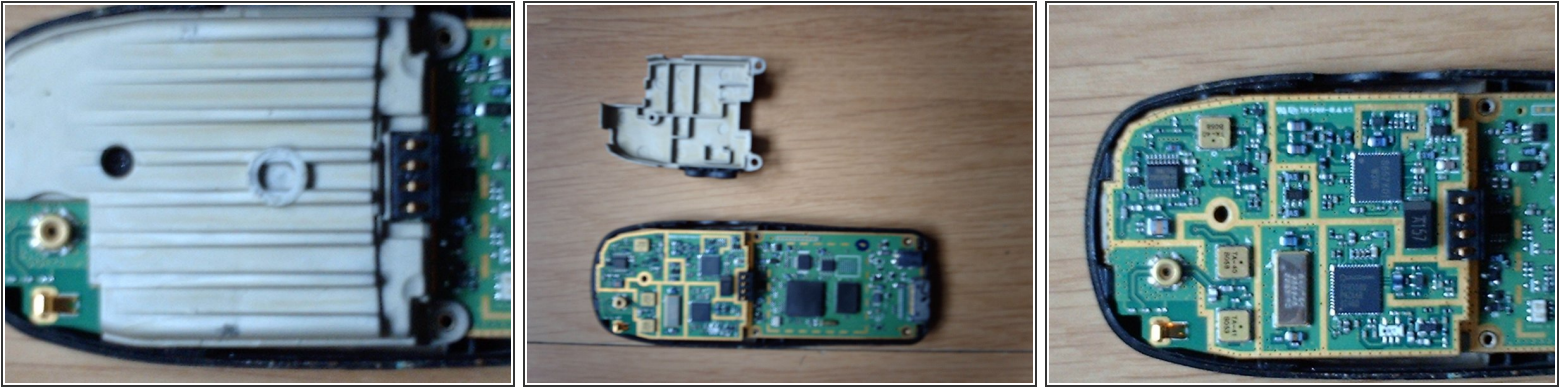
- After the battery is out, we're presented with a plastic cover with all the phone's information (Model No., Serial No etc)
- Notice the 4 Philips screw-heads in each of the four corners. Those need to go off.
- After unscrewing, you might notice that the cover doesn't easily go off. Four clips are holding the back cover onto the front cover.
- Use a Spudger and unclip the sides of the cover. It shouldn't put up much resistance

Step 4



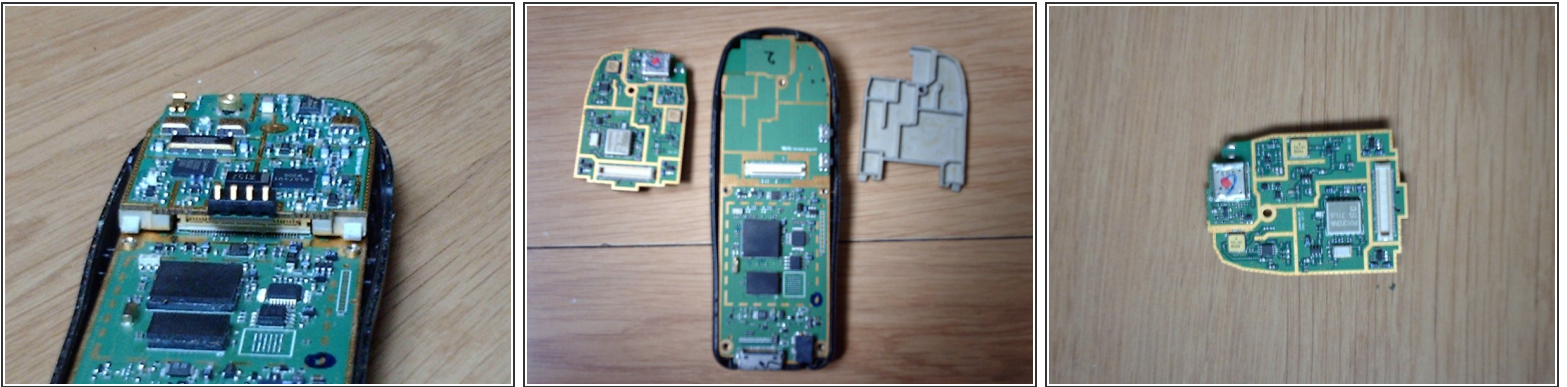
- Once the back cover is off, one can see the motherboard and a strange metal part on the top of the phone. This serves as an antenna booster, but also to protect the board.

Step 5



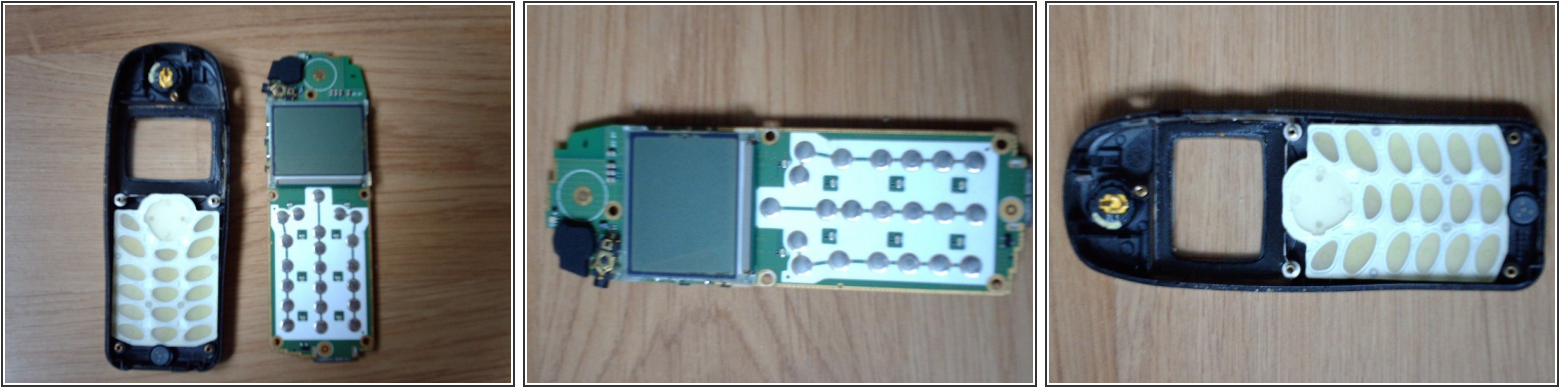
- See that hole in the shield? That Has a screw in it. And yes, it needs to leave.
- After removing the screw from the shield, it can be lifted from the board easily, revealing another board beneath it.

Step 6



- It seems that this secondary board is held onto the main board by a board connector.
- Pull the board gently and you'll notice it comes out rather fast.

Step 7



- By this stage, the board simply comes out of the front body, exposing the keyboard and its associated membrane.
- On the board we encounter the ringer(upper left), the headphone/handsfree input(under the ringer) and the LCD (which is sadly stuck on the board, as is the keypad membrane)
- On the case we encounter the microphone (lowest part of the phone case), the loudspeaker (the highest part of the phone case)

Step 8



- That concludes the teardown for now.

To reassemble your device, follow these instructions in reverse order.