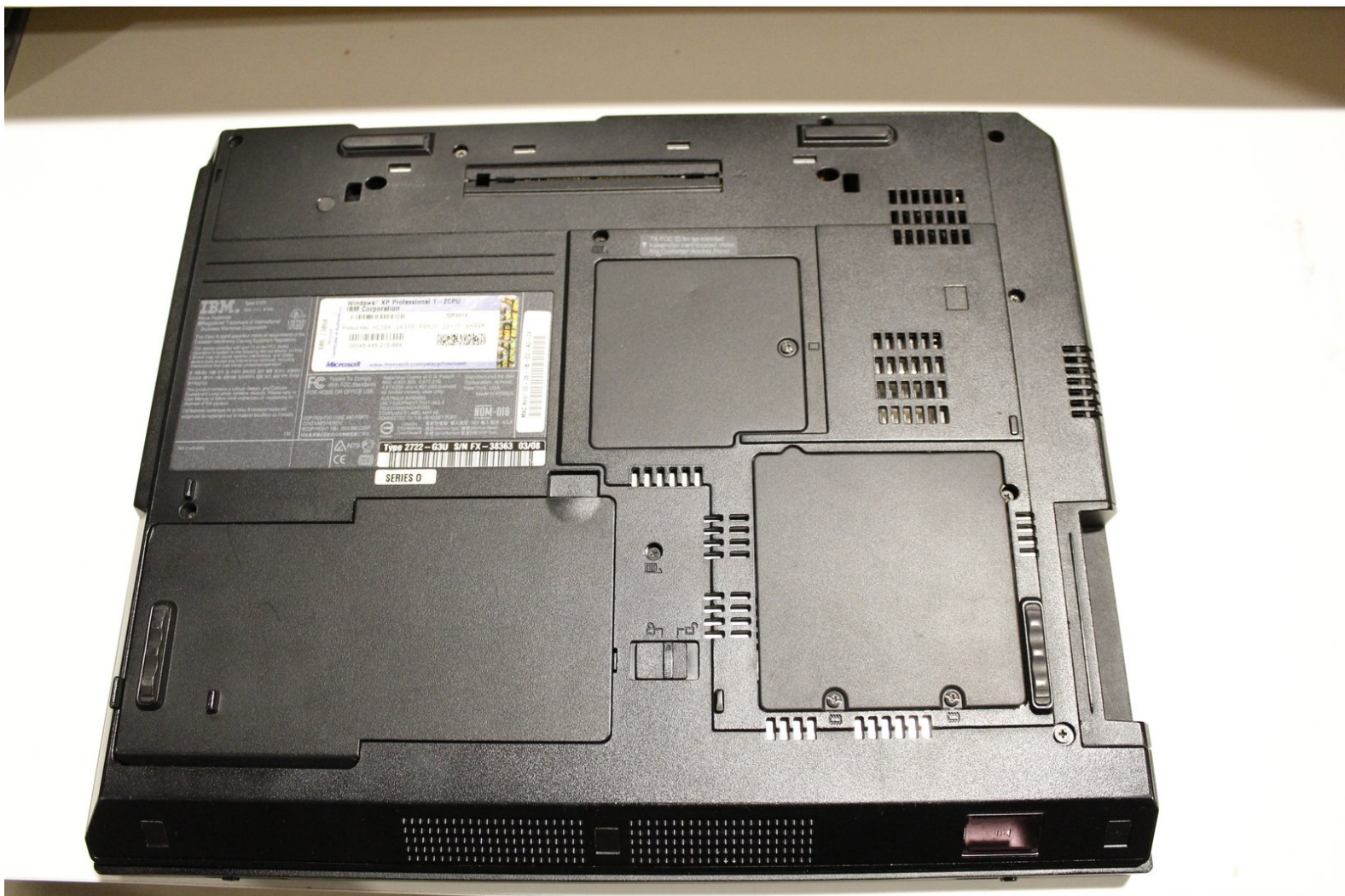




# IBM ThinkPad R40 Hard Drive Replacement

Replace your current hard drive.

Written By: Alec M



# INTRODUCTION

Replace the hard drive in an IBM Thinkpad R40



## TOOLS:

- [Phillips #1 Screwdriver](#) (1)



## PARTS:

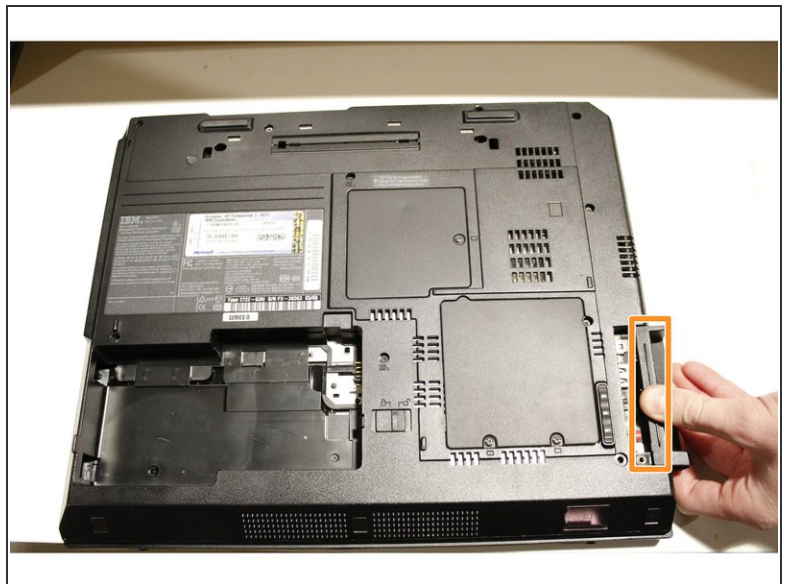
- [2.5" PATA Hard Drive](#) (1)

## Step 1 — Remove the battery



- To remove the battery, slide the battery lock lever right, while pulling on the battery tab.

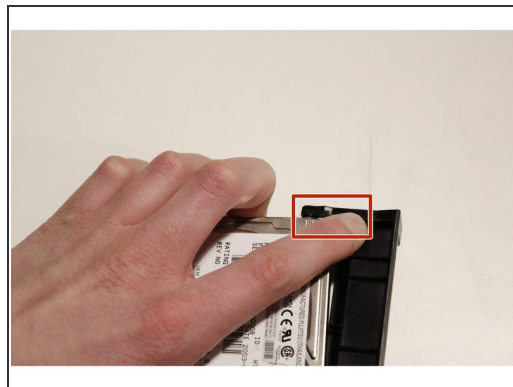
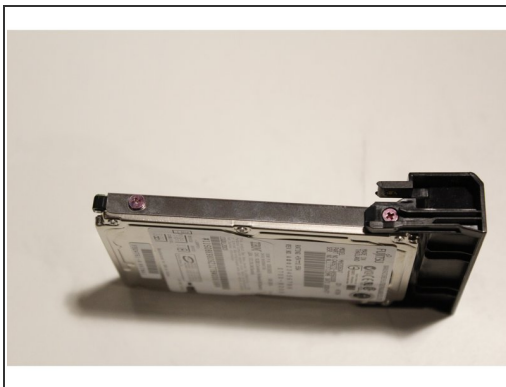
## Step 2 — Remove the hard drive holder.



- Remove the Phillips #1 screw from the bottom of the laptop.
- Pull on the small rise in the plastic to remove the hard drive holder.
- ⓘ Don't be afraid to use some force, it requires quite a bit of pressure to remove.



### Step 3 — Remove the hard drive holder.



- Remove the hard drive holder completely from the computer.
- Push on the plastic, and the hard drive will pop out.

### Step 4 — Remove the hard drive.



- Remove the four Phillips #1 screws.

To reassemble your device, follow these instructions in reverse order.