



IBM ThinkPad T41 CMOS Battery Replacement

This is a step by step guide for replacing/repairing the BIOS battery of an IBM ThinkPad T41 laptop. It will aid you in taking apart your laptop to reach the BIOS battery.

Written By: Marissa Blustein



INTRODUCTION

This repair guide will aid you in taking apart your IBM ThinkPad T41 laptop to reach and replace its BIOS battery.

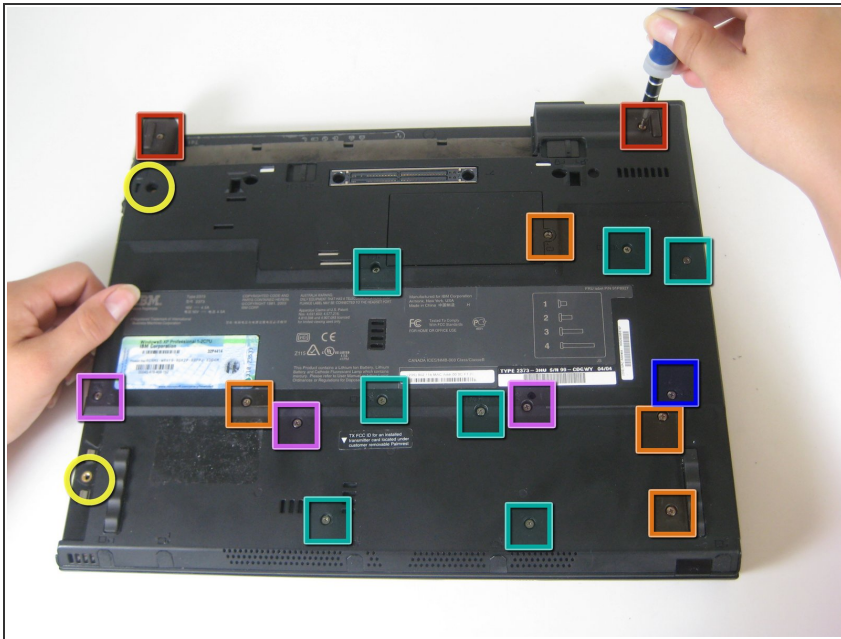
Do not uninstall the battery when is Setting a Supervisor Password!



TOOLS:

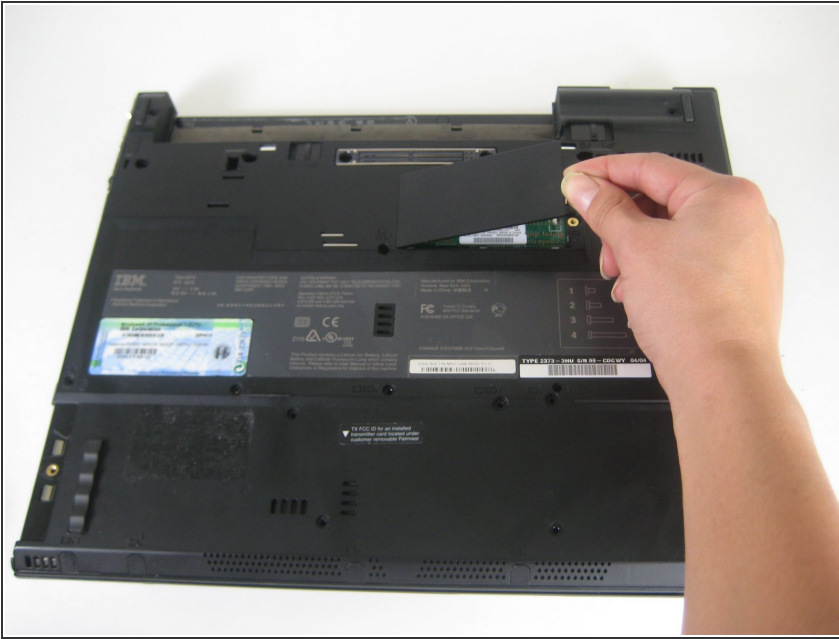
- [Spudger](#) (1)
 - [Phillips #1 Screwdriver](#) (1)
-

Step 1 — Keyboard



- Close the screen and turn the closed laptop over.
- Remove all 17 screws on the bottom of the computer.
- ❗ The multiple colors (turquoise, red, blue, orange, yellow, and purple) are for organizational purposes, indicating different screws.
- The yellow marker at the rear denotes the UltraBay device retaining screw. This screw is optional as the UltraBay mechanism will hold the drive or battery in place anyway. The yellow marker at the front denotes the hard disk caddy retaining screw.

Step 2



- Remove the extra RAM cover, by lifting where the screw was and pulling out.

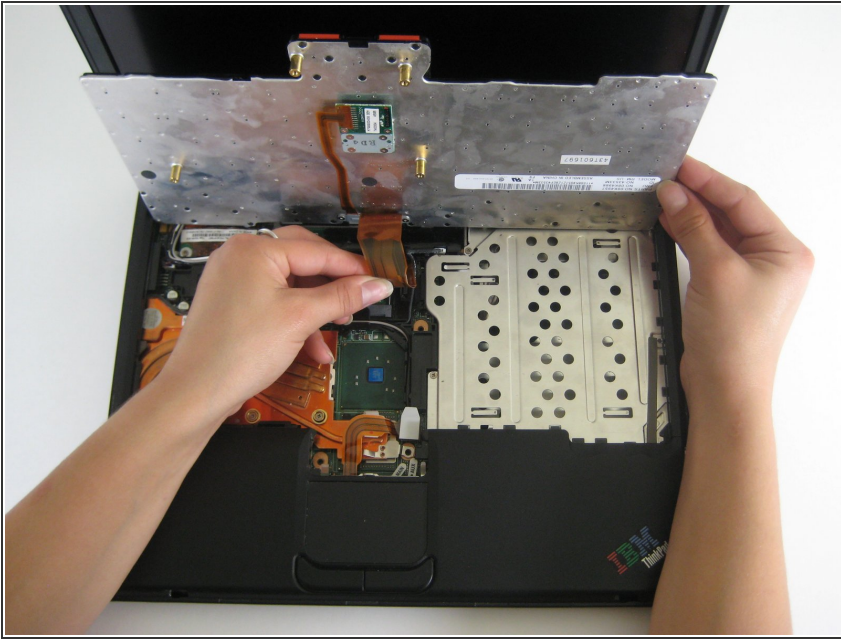
Step 3



- Turn the laptop right side up and open the screen.
- Lift the keyboard, using a spudger at the seam between the keyboard and trackpad.

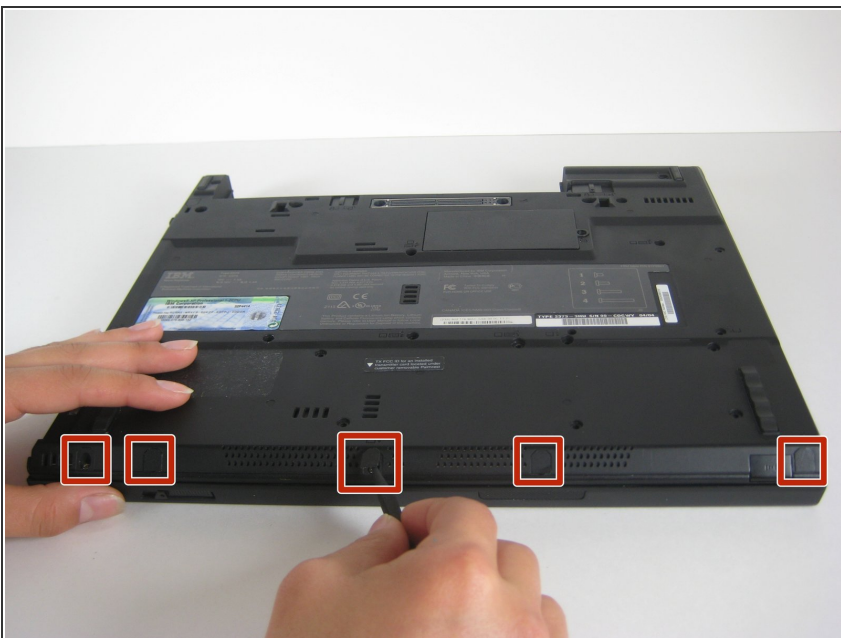
⚠ Careful of the ribbon cable underneath, which may tear if the keyboard is lifted too vigorously.

Step 4



- Unplug the keyboard's ribbon cable, by lifting up the edges of the plug.
- Remove the keyboard.

Step 5 — Trackpad



- Close the laptop and turn it over.
 - Remove the five plastic stickers covering the screws on the front edge of the case.
- ⚠ In order to reuse the stickers, remove them carefully.

Step 6



- Unscrew the five screws that were hidden by the stickers.

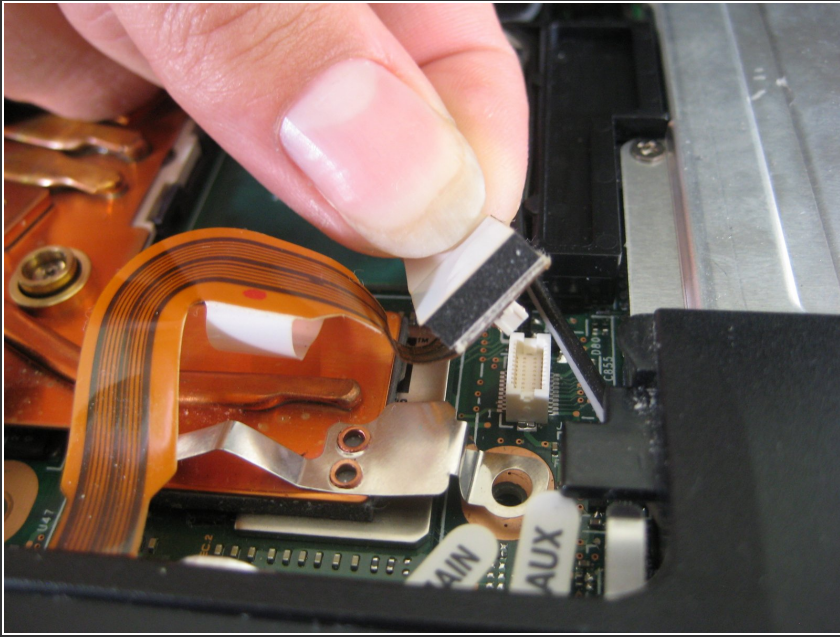
Step 7



- Turn the computer right side up and open the screen.
- Lift the trackpad assembly by placing hands on both edges and then pull towards you till it is free of the case.

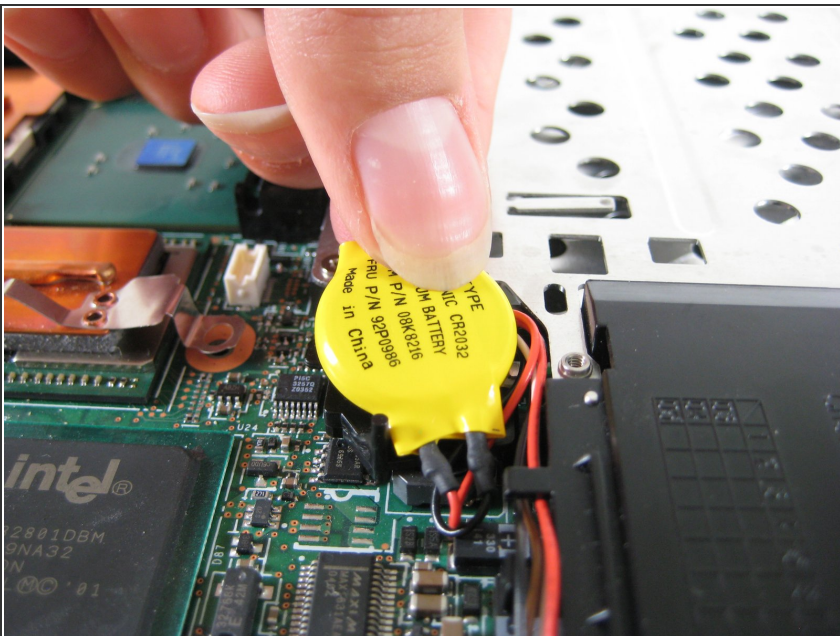
⚠ Be careful of the ribbon cable underneath. It may tear if the trackpad is pulled too vigorously.

Step 8



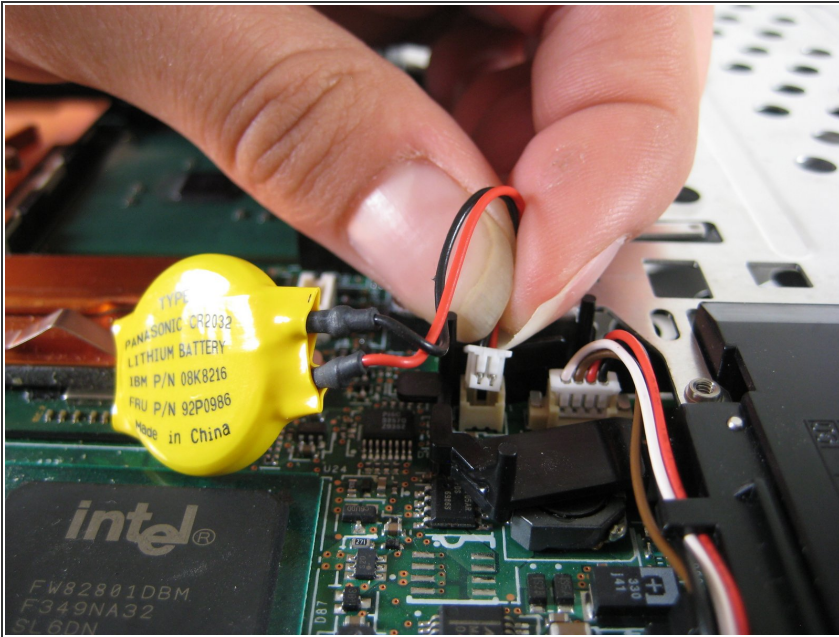
- Unplug the trackpad's ribbon cable by pulling on the white plastic tab.

Step 9 — CMOS Battery



- Lift the yellow plastic-covered battery up.

Step 10



- Unplug the battery connector.

To reassemble your device, follow these instructions in reverse order.