



IBM ThinkPad T42 Display Replacement

Written By: Austin Kidd



INTRODUCTION

Removal/repair of the display



TOOLS:

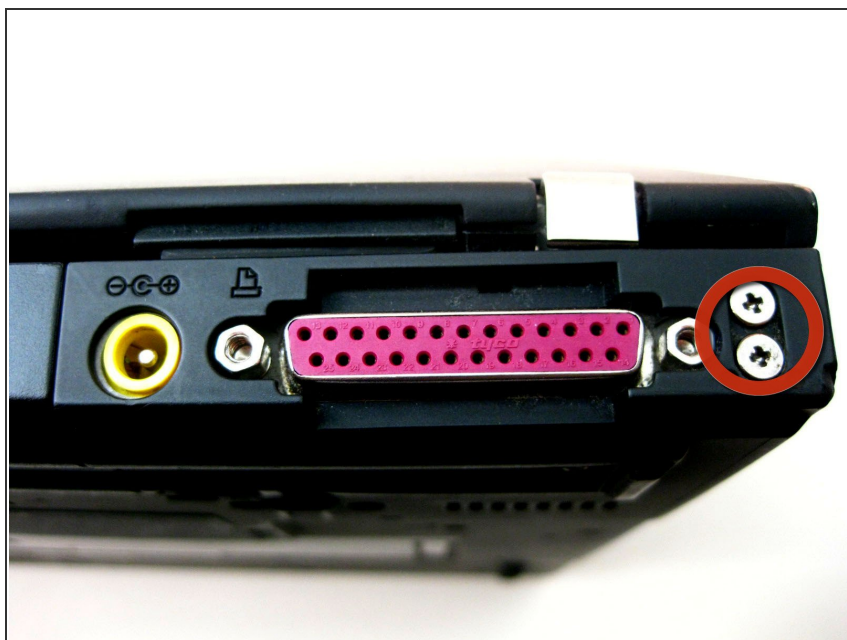
- [Phillips #0 Screwdriver](#) (1)
-

Step 1 — Bottom Cover



- Unscrew the 20 Phillips screws on the underside of the T42.
- ⓘ For ease of reassembly, keep your screws organized.

Step 2 — Rear Screws



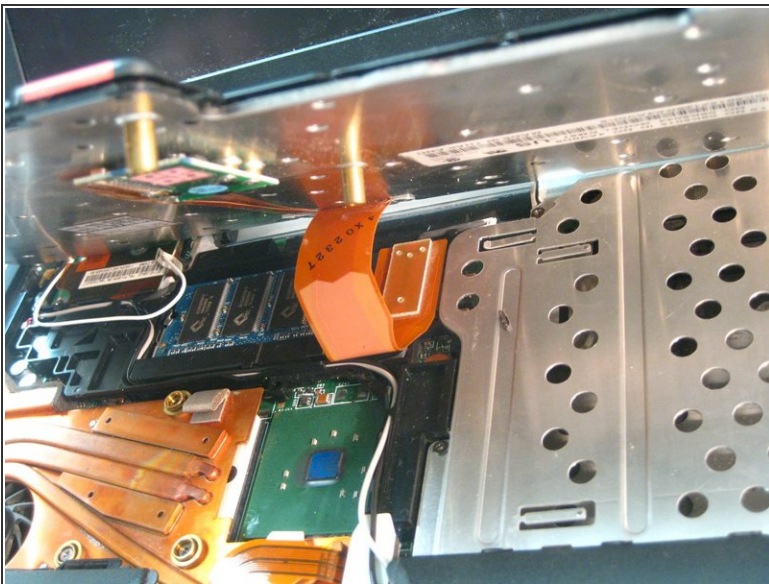
- Unscrew the 2 Phillips screws on both sides of the T42's rear.

Step 3 — Keyboard/Trackpad Removal



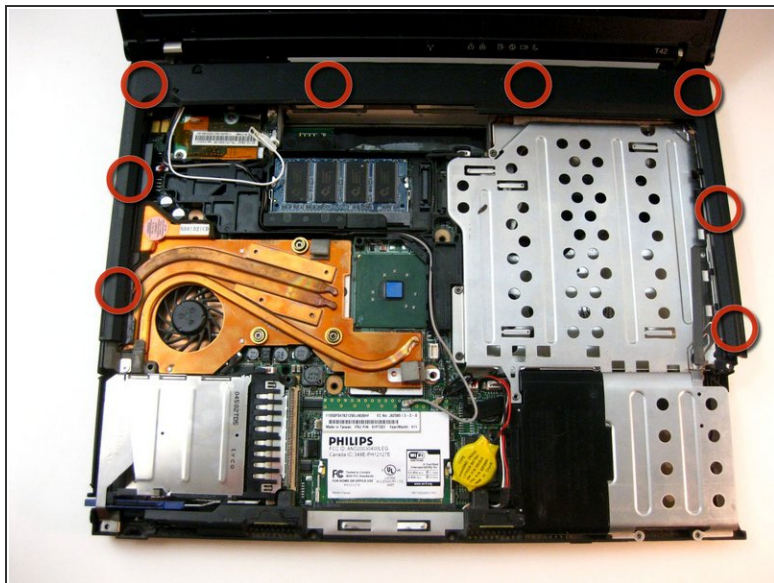
- Flip the laptop over and open the screen.
- ⚠ The bezel and keyboard will be loose, be careful.

Step 4 — Disconnecting Ribbon Cables



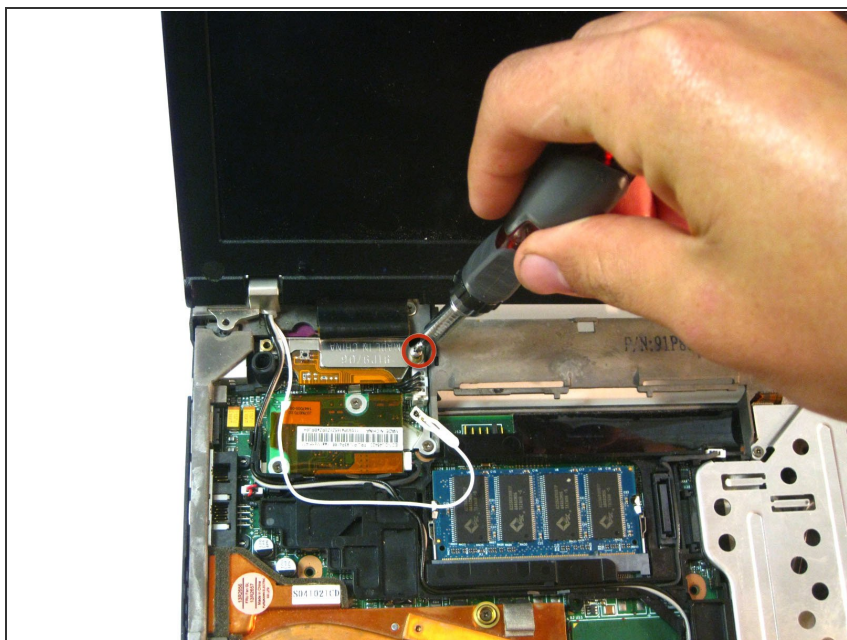
- Carefully maneuver the palm rest away from the keyboard, as both the keyboard and palm rest/trackpad will come off together.
- ⚠ Remember, both the keyboard and trackpad have connectors to the motherboard. Disconnect these before completely removing either component.

Step 5 — Bezel Removal



- Remove the plastic bezel along the edges, you may need to pry the areas circled with a spudger to remove the bezel.

Step 6 — Display Screws



- Unscrew the screws holding down the display.
- ⓘ Along with the one pictured in red, there is another one along the top right edge.

Step 7 — Display and Ribbon Cable Removal



- Carefully unplug the display ribbon on the motherboard, then carefully lift the display free from the device.

To reassemble your device, follow these instructions in reverse order.