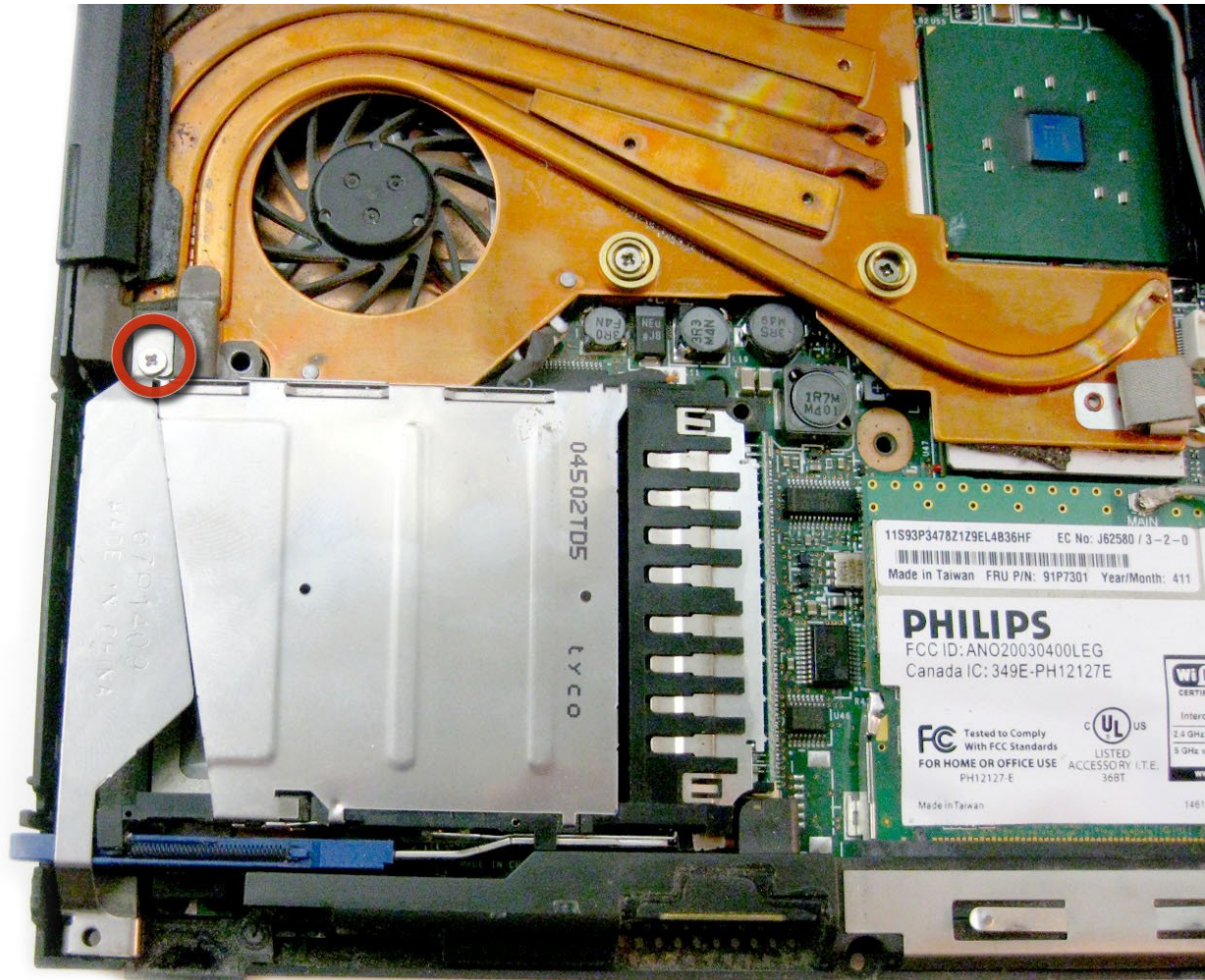




# IBM ThinkPad T42 Mini-PCI Port Replacement

Written By: Gerald Watanabe



---

## INTRODUCTION

The Mini-PCI port can be accessed easily after removing the rear cover



### TOOLS:

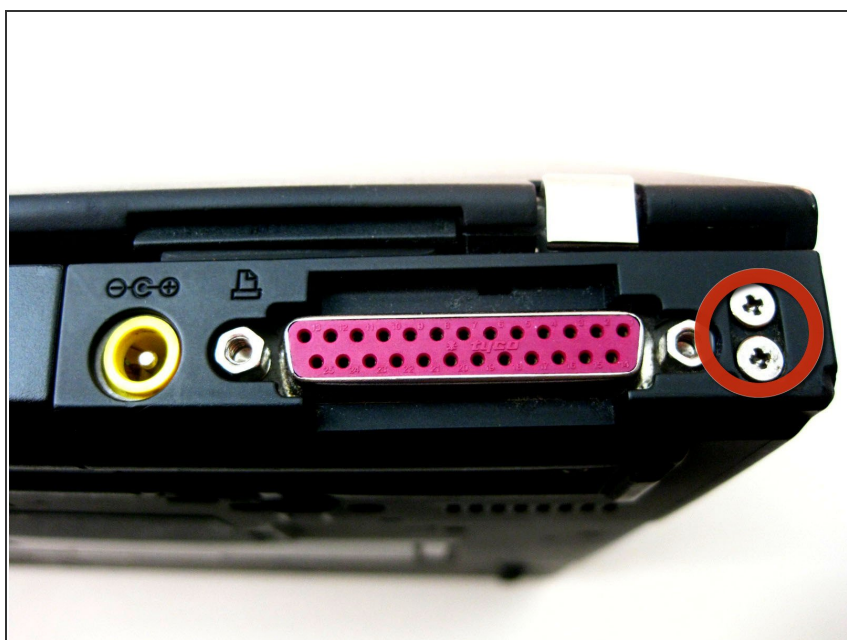
- [Phillips #0 Screwdriver](#) (1)
-

## Step 1 — Bottom Cover



- Unscrew the 20 Phillips screws on the underside of the T42.
- ⓘ For ease of reassembly, keep your screws organized.

## Step 2 — Rear Screws



- Unscrew the 2 Phillips screws on both sides of the T42's rear.

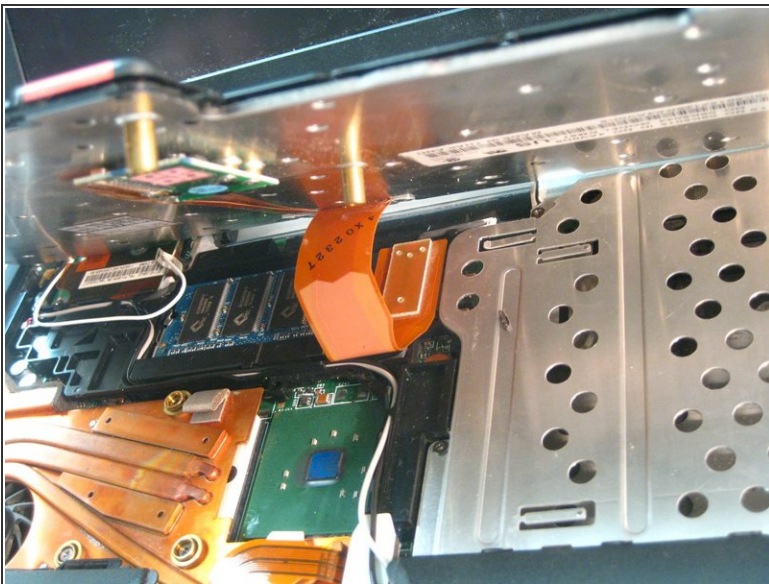


### Step 3 — Keyboard/Trackpad Removal



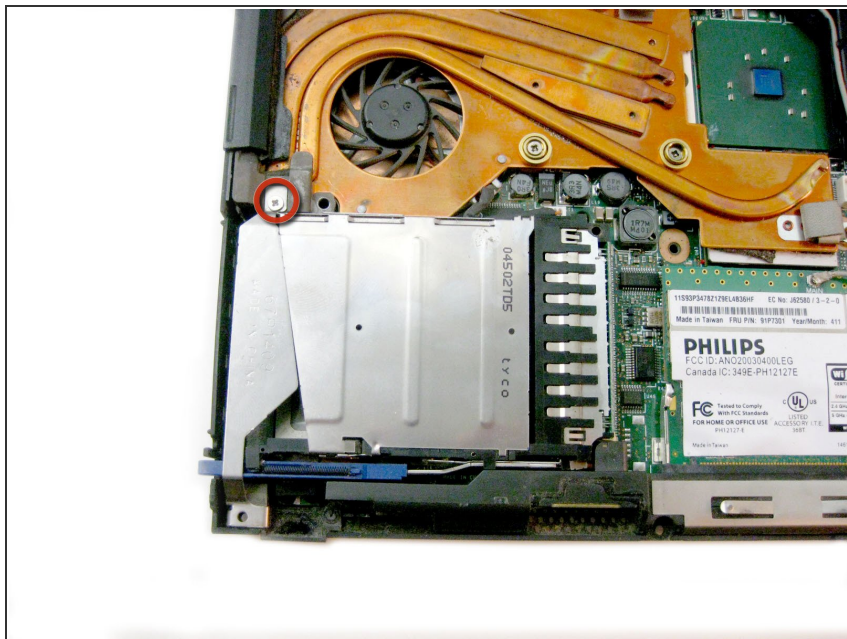
- Flip the laptop over and open the screen.
- ⚠ The bezel and keyboard will be loose, be careful.

### Step 4 — Disconnecting Ribbon Cables



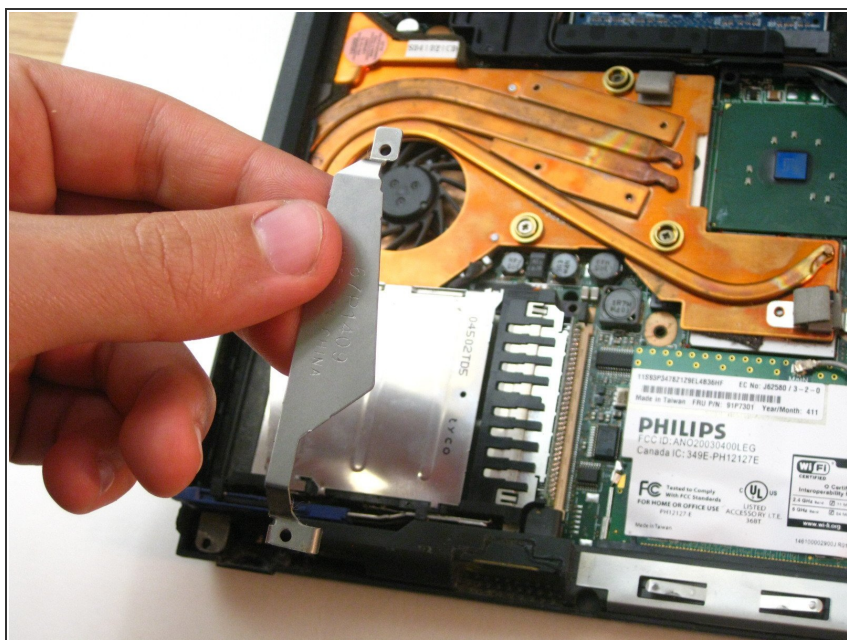
- Carefully maneuver the palm rest away from the keyboard, as both the keyboard and palm rest/trackpad will come off together.
- ⚠ Remember, both the keyboard and trackpad have connectors to the motherboard. Disconnect these before completely removing either component.

## Step 5 — Port Bracket



- Remove the screw affixing the bracket down.

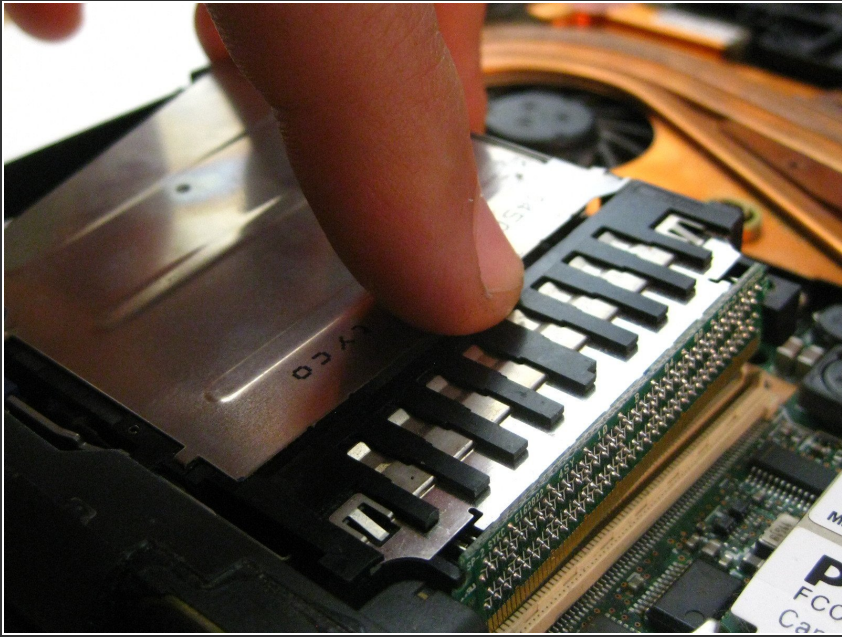
## Step 6 — Bracket Removal



- Lift the bracket up and out.



## Step 7 — Port Removal



- Carefully disconnect it from the motherboard and pull it out of the device.

To reassemble your device, follow these instructions in reverse order.