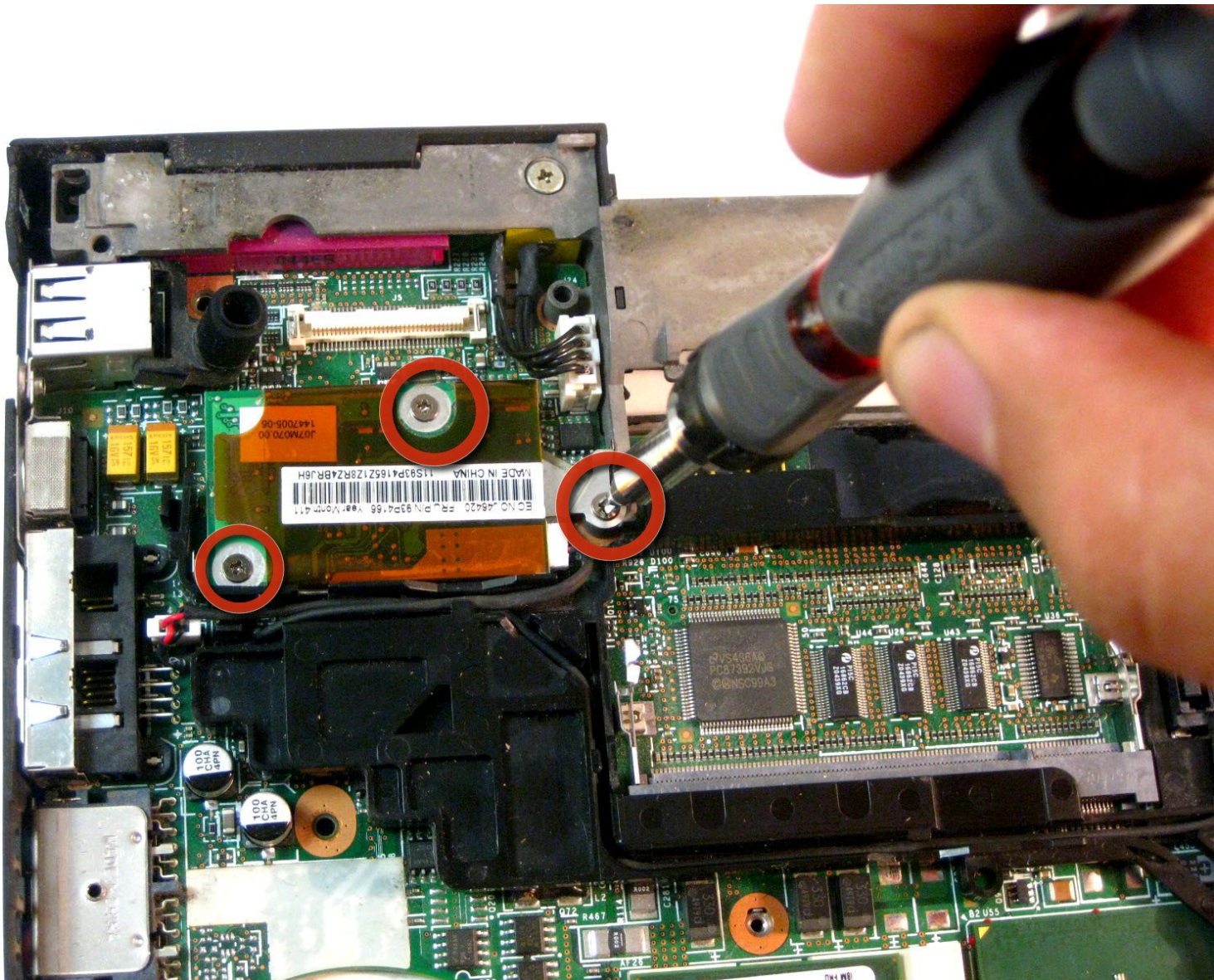




IBM ThinkPad T42 Modem Daughter Board Replacement

This guide demonstrates how to replace the modem daughter board in the IBM ThinkPad T42.

Written By: Gerald Watanabe



INTRODUCTION

This guide will demonstrate the removal and replacement procedures for an IBM ThinkPad T42 Modem Daughter Board.



TOOLS:

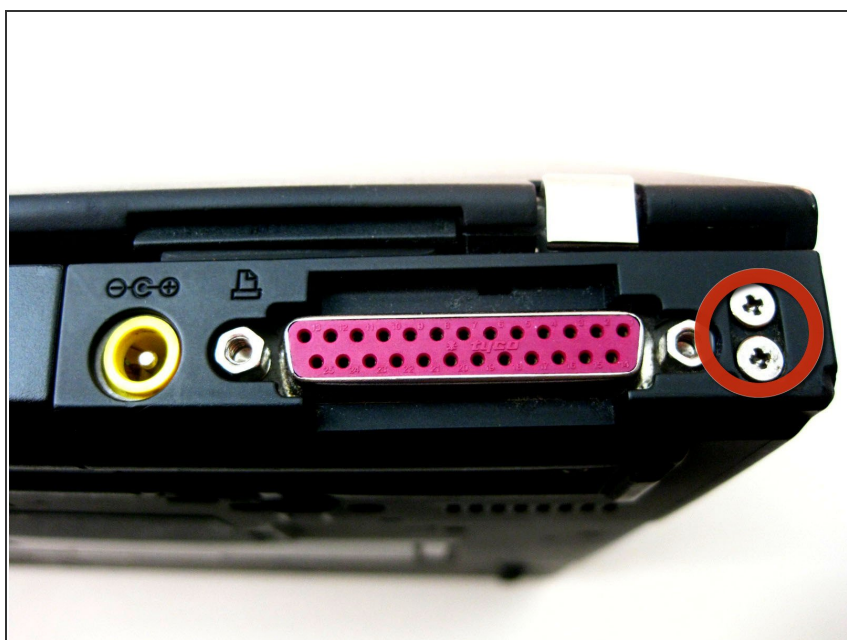
- [Phillips #0 Screwdriver](#) (1)
-

Step 1 — Bottom Cover



- Unscrew the 20 Phillips screws on the underside of the T42.
- ⓘ For ease of reassembly, keep your screws organized.

Step 2 — Rear Screws



- Unscrew the 2 Phillips screws on both sides of the T42's rear.

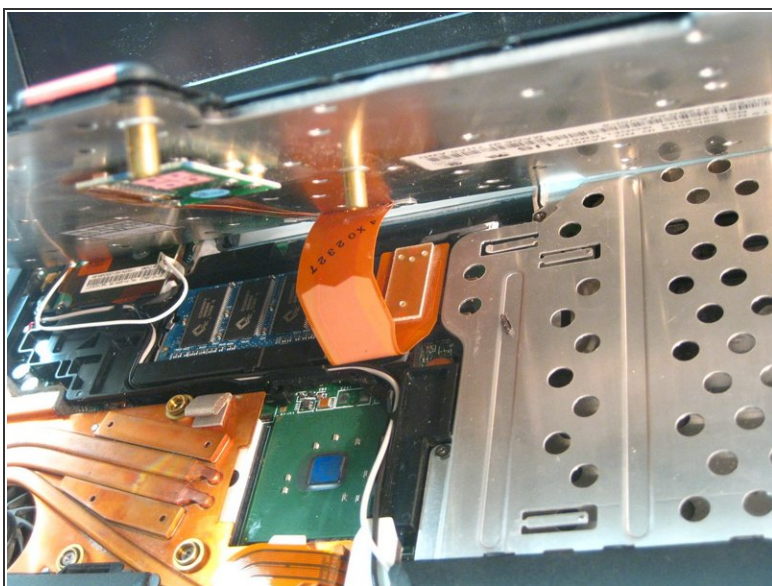
Step 3 — Keyboard/Trackpad Removal



- Flip the laptop over and open the screen.

⚠ The bezel and keyboard will be loose, be careful.

Step 4 — Disconnecting Ribbon Cables



- Carefully maneuver the palm rest away from the keyboard, as both the keyboard and palm rest/trackpad will come off together.

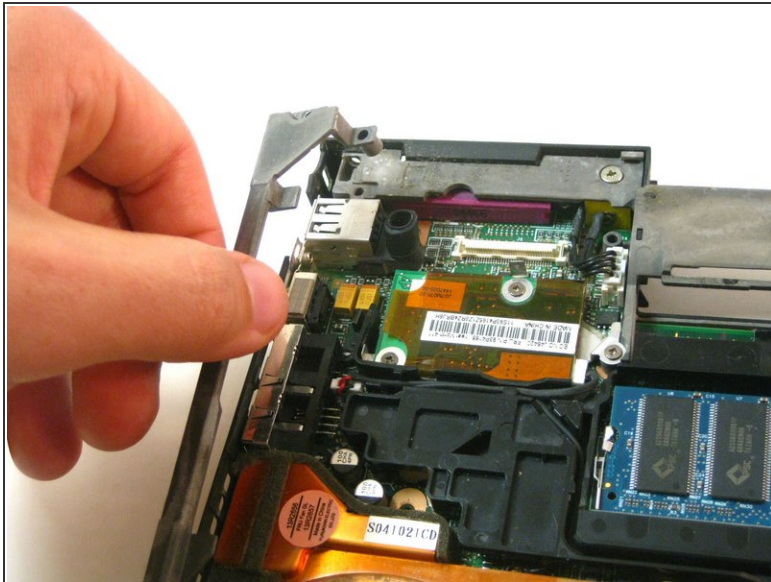
⚠ Remember, both the keyboard and trackpad have connectors to the motherboard. Disconnect these before completely removing either component.

Step 5 — Plastic Edge Cover



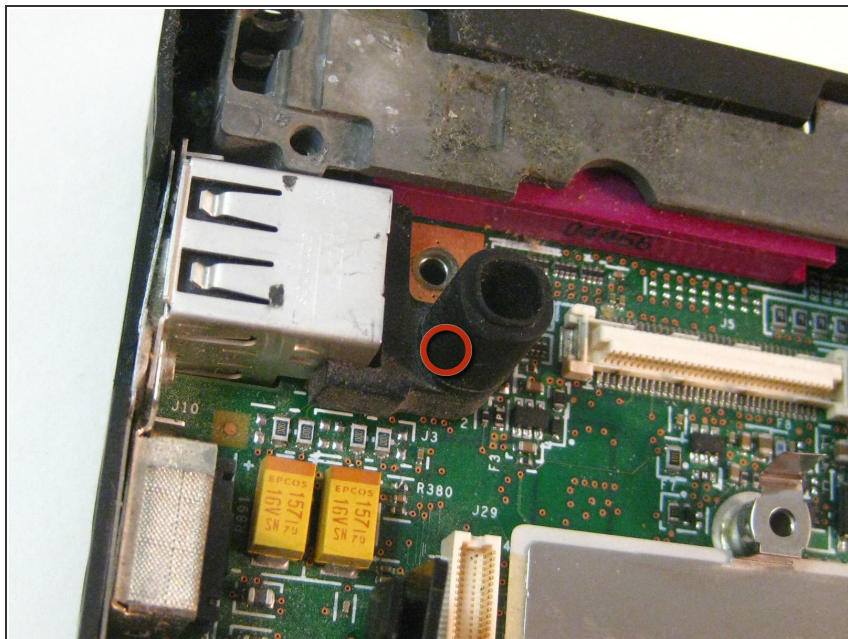
- Starting from the bottom right, carefully remove off the bezel. Use a spudger or flat head screwdriver if needed.

Step 6 — Lower Bracket Removal



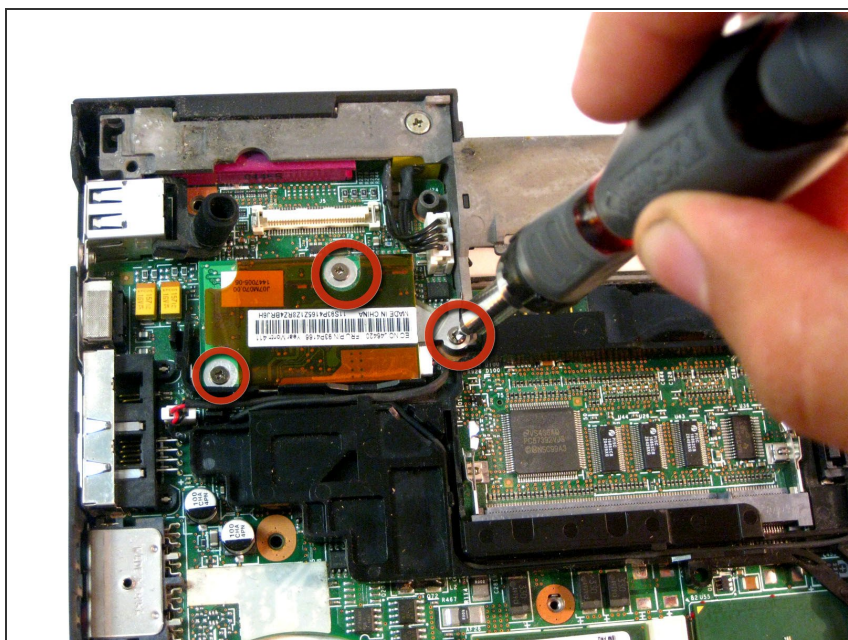
- The metal bracket will now be free to move, grasp it and remove it from the device.

Step 7 — Remove the Microphone Cover



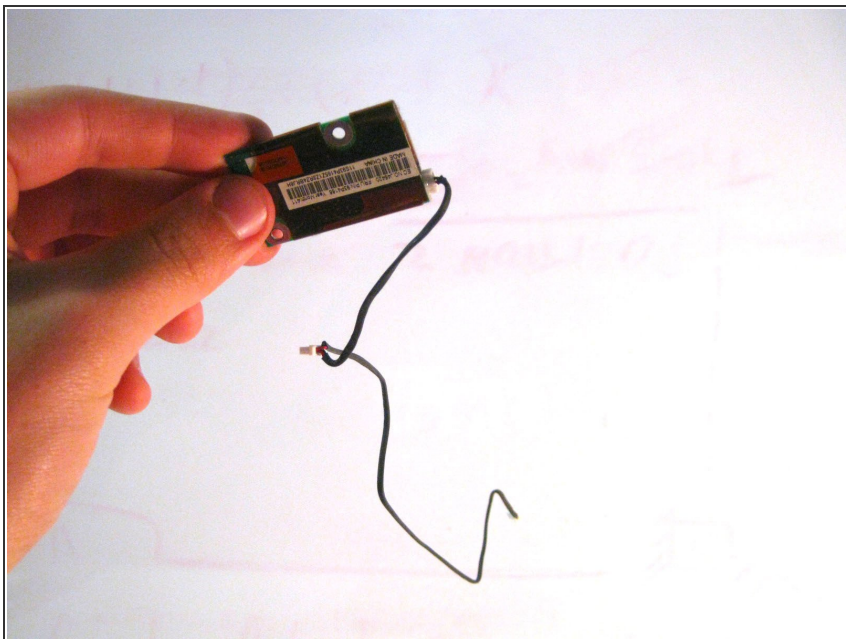
- Remove the small rubber piece that is covering the T42's microphone,

Step 8 — Daughterboard Unscrewing



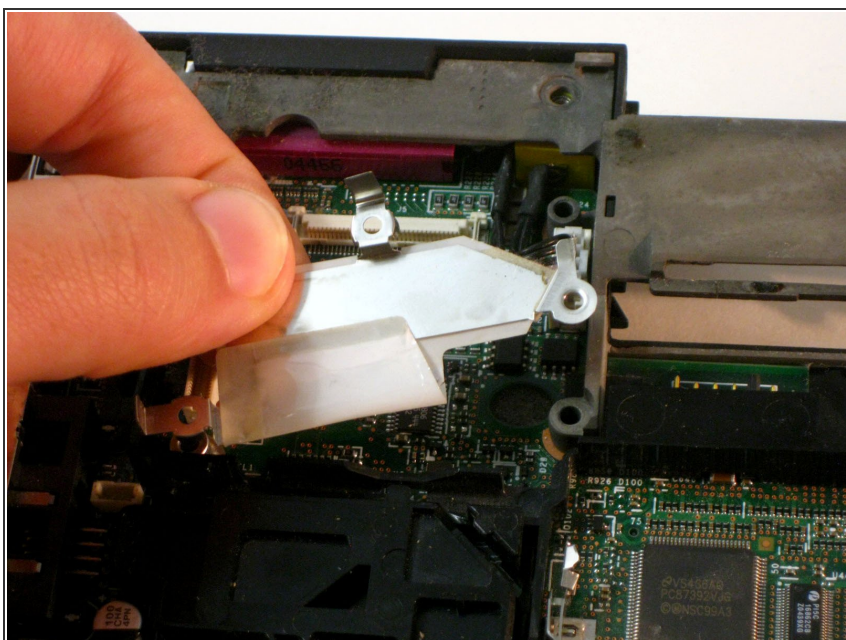
- Next, unscrew the 3 Phillips screws in red.

Step 9 — Removing the Daughterboard



- The cables are routed through different components for organization, carefully disconnect them, unwrap them and pull the card free.

Step 10 — Remove Bracket



- Lastly, remove the bracket sitting beneath it.
- ⓘ The end!

To reassemble your device, follow these instructions in reverse order.