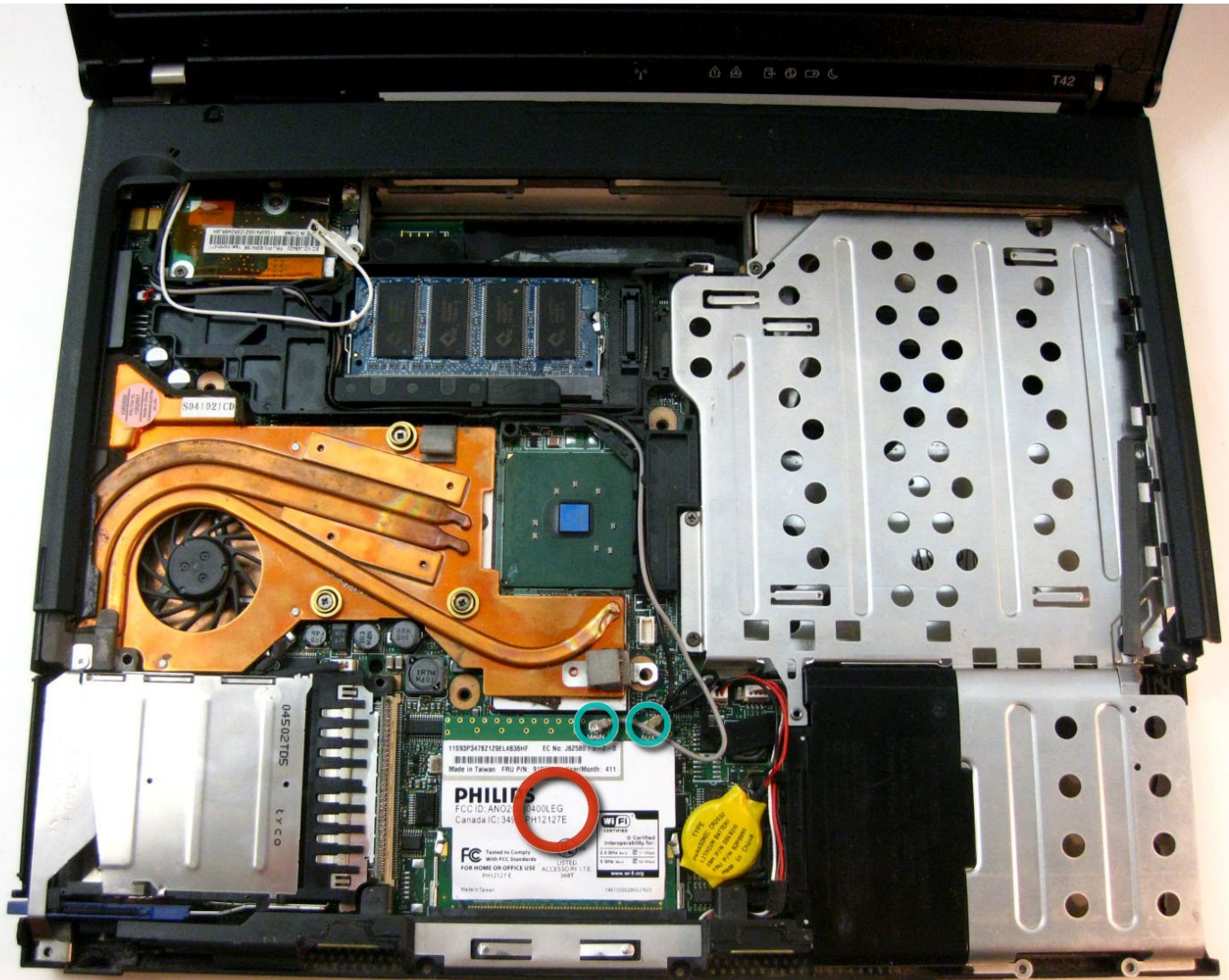




# IBM ThinkPad T42 Wi-Fi Card Replacement

Written By: Kevin Rehm



---

## INTRODUCTION

Removal of the Wi-Fi Card.



### TOOLS:

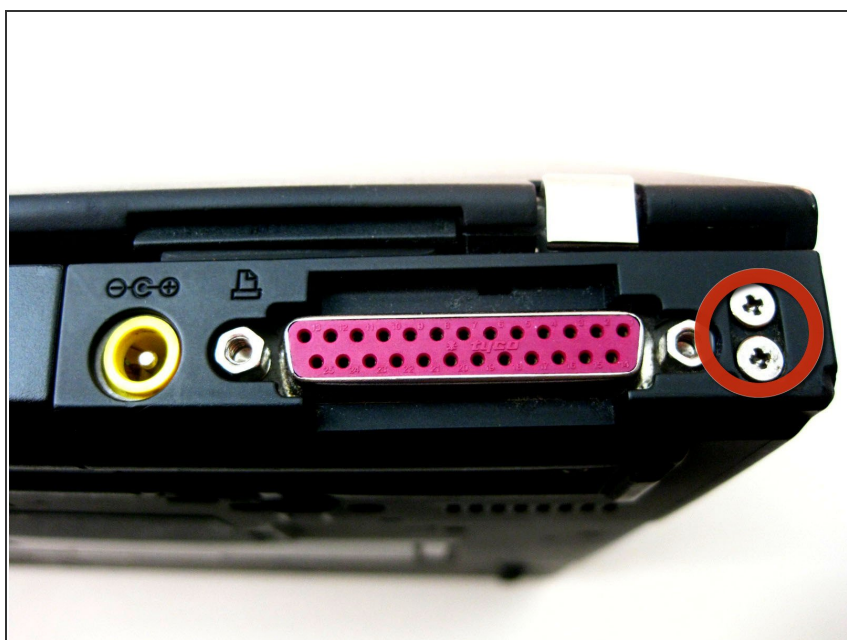
- [Phillips #0 Screwdriver](#) (1)
-

## Step 1 — Bottom Cover



- Unscrew the 20 Phillips screws on the underside of the T42.
- ⓘ For ease of reassembly, keep your screws organized.

## Step 2 — Rear Screws



- Unscrew the 2 Phillips screws on both sides of the T42's rear.

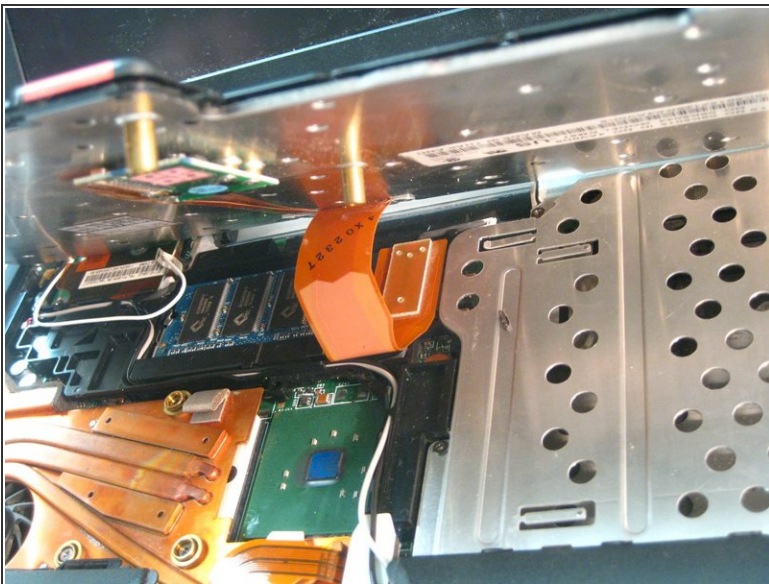


### Step 3 — Keyboard/Trackpad Removal



- Flip the laptop over and open the screen.
- ⚠ The bezel and keyboard will be loose, be careful.

### Step 4 — Disconnecting Ribbon Cables



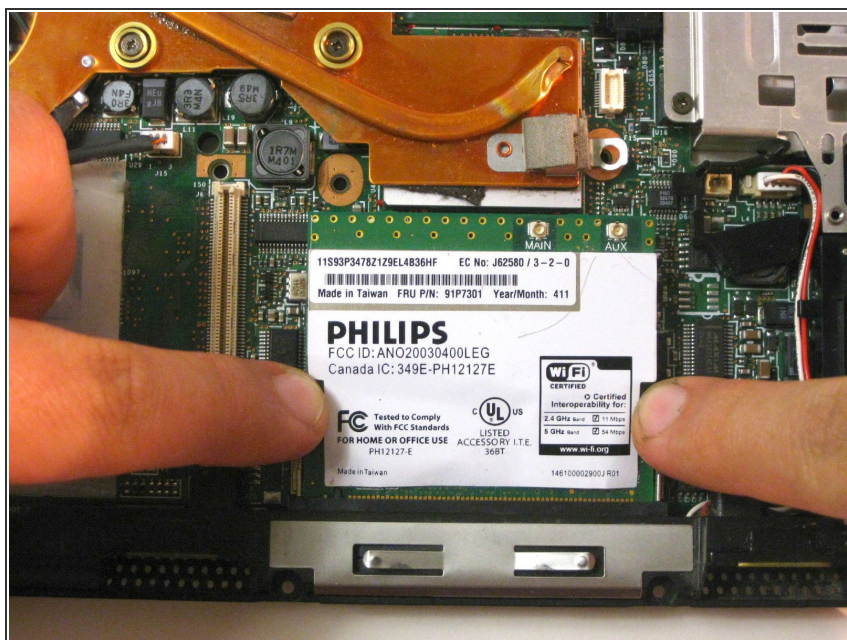
- Carefully maneuver the palm rest away from the keyboard, as both the keyboard and palm rest/trackpad will come off together.
- ⚠ Remember, both the keyboard and trackpad have connectors to the motherboard. Disconnect these before completely removing either component.

## Step 5 — Wi-Fi Card



- To remove Wi-Fi card, first disconnect both display wires on the top right.

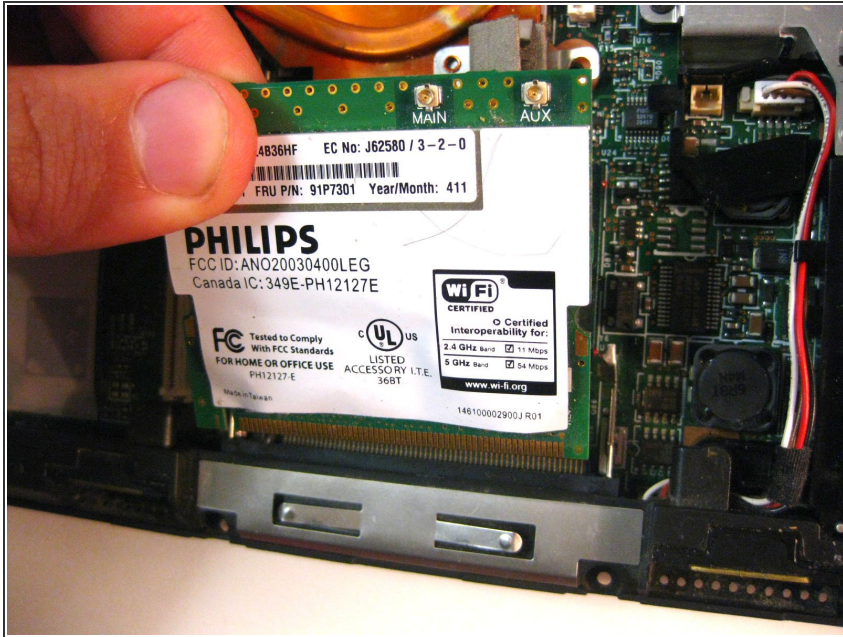
## Step 6



- Then slide both of the metal pieces holding it down outwards, and it will pop up.



## Step 7



- Carefully pull it out.

To reassemble your device, follow these instructions in reverse order.