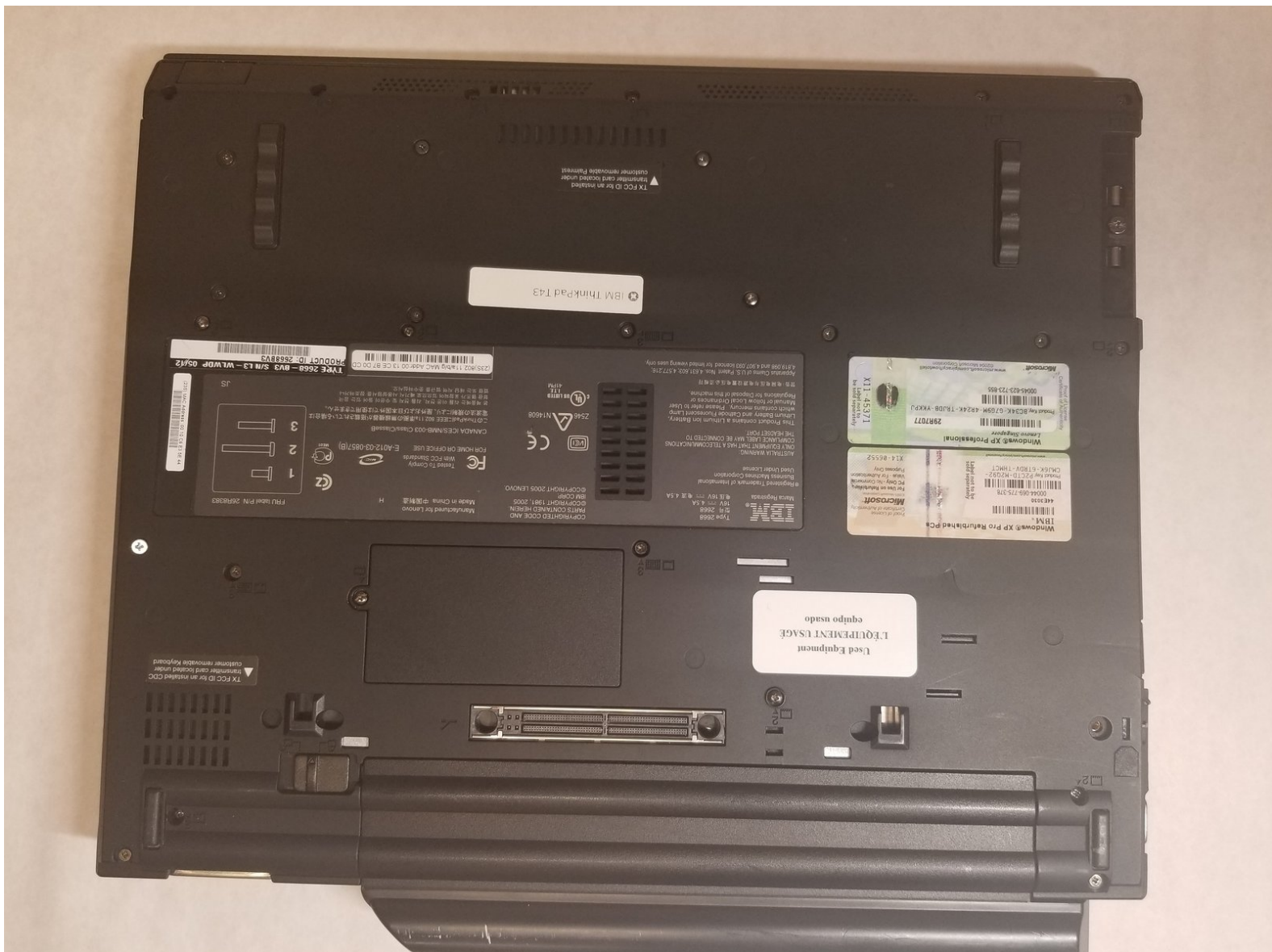




# IBM ThinkPad t43 WiFi Card Replacement

This Guide shows the how to remove and replace the WiFi Card of this device.

Written By: aLiX pleRRe



---

# INTRODUCTION

This Guide shows the how to remove and replace the WiFi Card of this device.

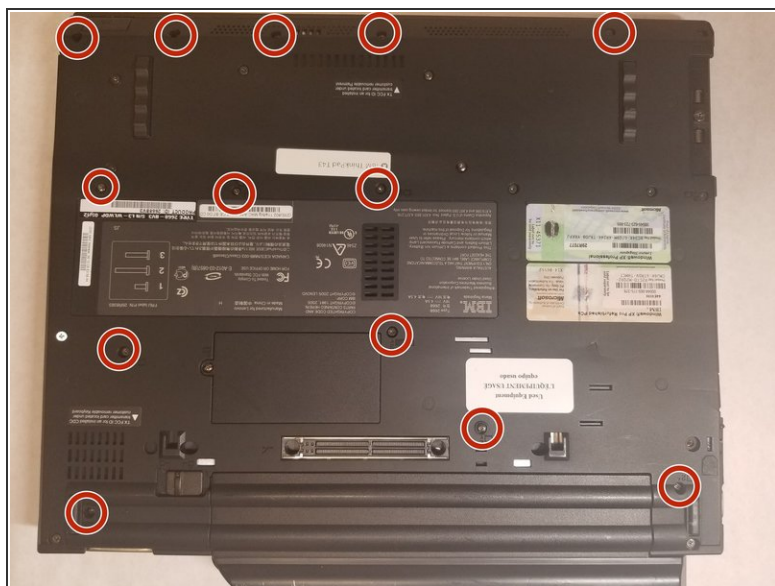
---



## TOOLS:

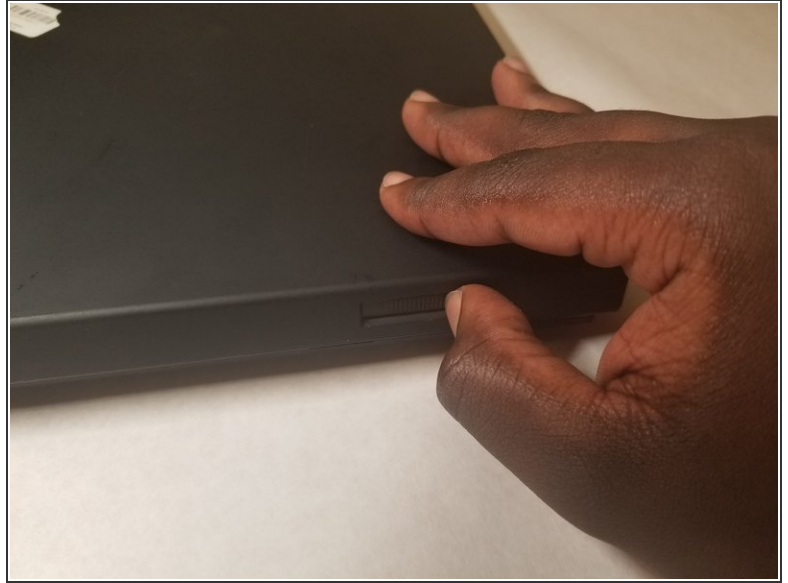
- [Phillips #0 Screwdriver](#) (1)
  - [Tweezers](#) (1)
  - [Magnetic Project Mat](#) (1)
-

## Step 1 — WiFi Card




- Start with the laptop with the side with the logo facing down.
- Next you will have to remove all the screws in the red circles
- ① When removing the screws try to place them in order of removal on a magnetic pad. It will help when you put them back and lowers the chance of losing them

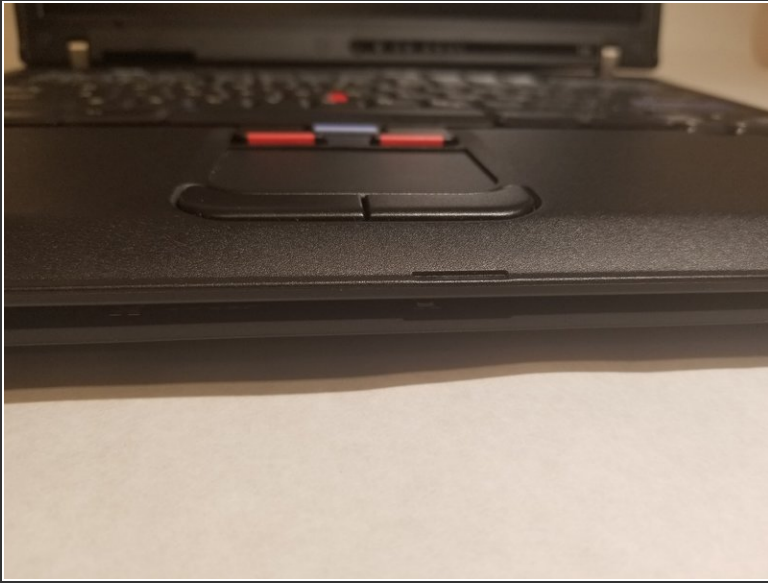
## Step 2



- Flip the laptop so that the logo is now facing up
- locate the lock switch on the front right
- Slide the switch to the right to unlock the laptop

 Make sure to unlock the laptop before opening because the keyboard may still be attached

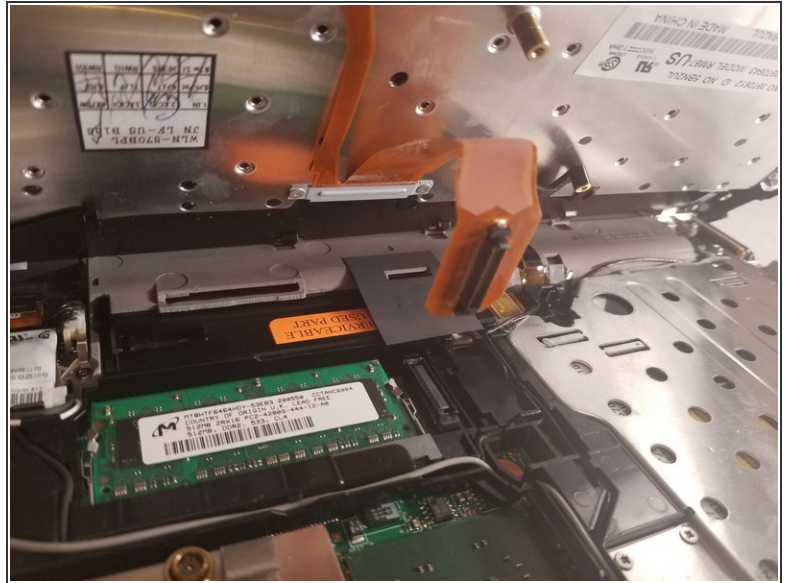
## Step 3



- Lift open the laptop
  - The keyboard should be detached from the bottom part of the laptop
  - Hold the edges of the keyboard and slowly pull up until it opens
- ⚠ Do not pull off the keyboard completely because there is a ribbon cable attached



## Step 4



- Disconnect the ribbon cable by simply lifting it up

## Step 5



- The WiFi-Card is located towards the middle bottom of the laptop

## Step 6



- Locate the two wires connected at the top of the WiFi-Card
- Hold the card down and use the tweezers to pinch the plug and pull up.

## Step 7



- Place fingers on the two clips holding the card in place
  - Pull the clips outwards until the the card pops up
  - Pull the card out by pulling out away from your body
  - To replace, follow these steps in reverse order
- i** Make sure that the side with the short end is on the left when you put it back in.

To reassemble your device, follow these instructions in reverse order.