



IBM Thinkpad T60 Touchpad Replacement

This guide will demonstrate how to remove an unresponsive or malfunctioning touchpad from the palm rest.

Written By: Dylan Kratochvil



INTRODUCTION

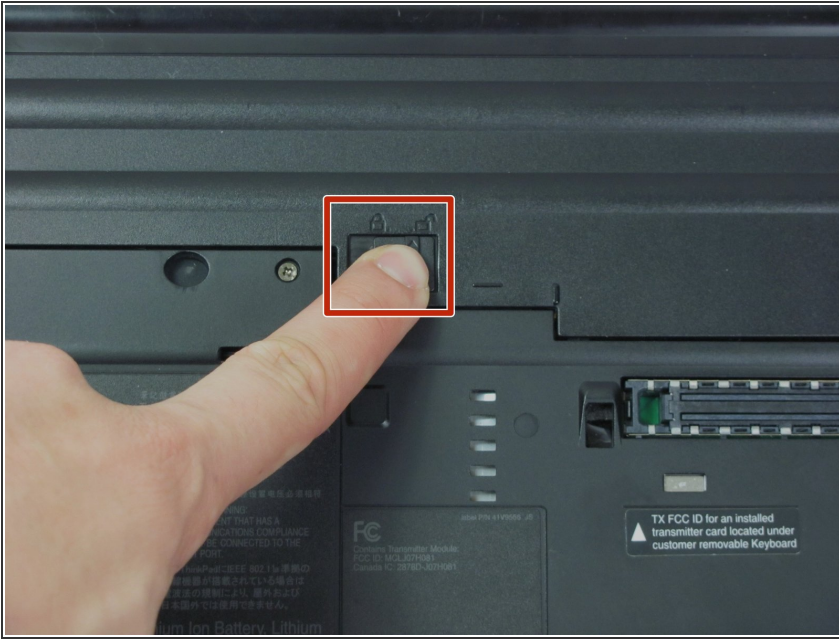
This guide will show how to remove a failing touchpad from the palm rest of an IBM Thinkpad T60. Remember to always power down the computer before attempting any installation/removal of any hardware components. Be sure to remove the AC adapter and all cables from the computer. If the computer has been on, wait several minutes before beginning the procedure to ensure all parts have cooled down.



TOOLS:

- [Phillips #0 Screwdriver](#) (1)
-

Step 1 — Battery



- Turn the computer over to see the small tab on the battery located near the top of the Thinkpad.
- Use your finger to slide the tab to the right to unlock the battery.

Step 2



- Once the tab is in the unlocked position (far right), pull the battery outwards away from the Thinkpad.
- The battery is now disconnected.

Step 3 — Palm Rest



- Using a #0 Phillips screwdriver, remove the four 17.0 mm screws.

Step 4



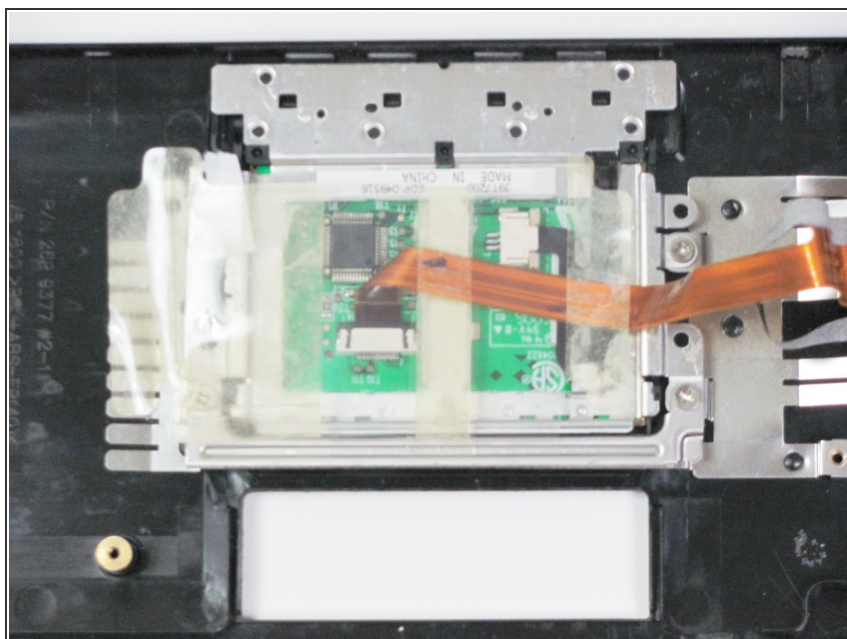
- Turn the computer back over, so the keyboard is facing upwards.
- Open the display to access the palm rest. Apply pressure to the sides of the palm rest so that it bends upwards in the middle. Gently lift away from the computer.

Step 5



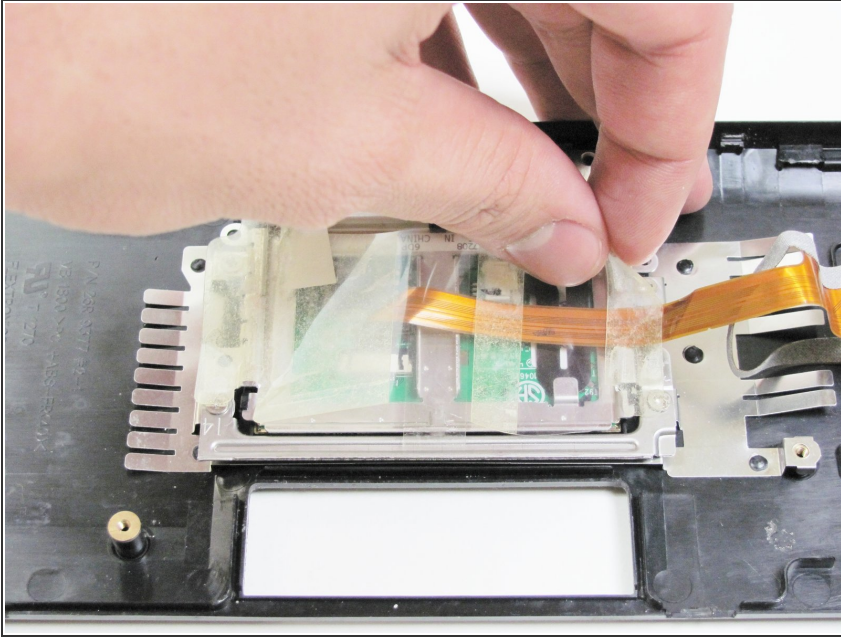
- Slightly lift the palm rest away from the computer.
 - ⚠ The touchpad's data cable connects the palm rest to the base unit. BE CAREFUL!
- Detach the connector by pulling upwards on the white tab.

Step 6 — Touchpad



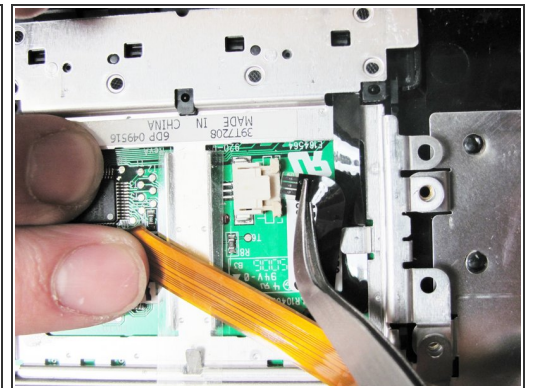
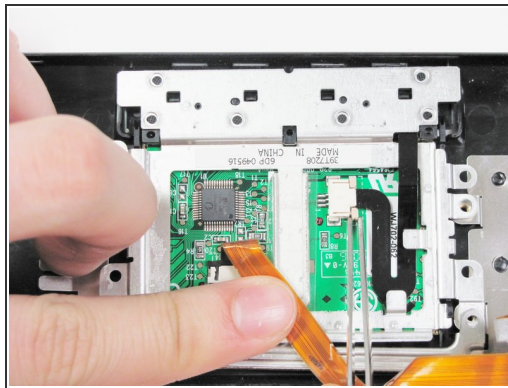
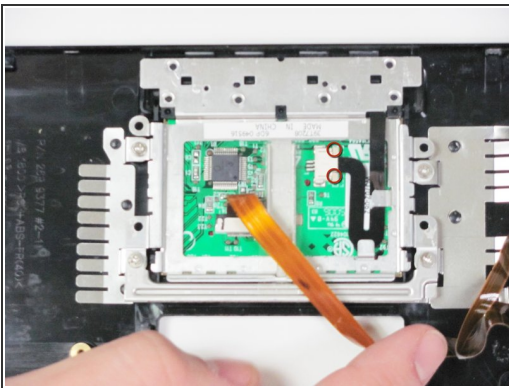
- Turn the palm rest over to access the back of the touch pad.

Step 7



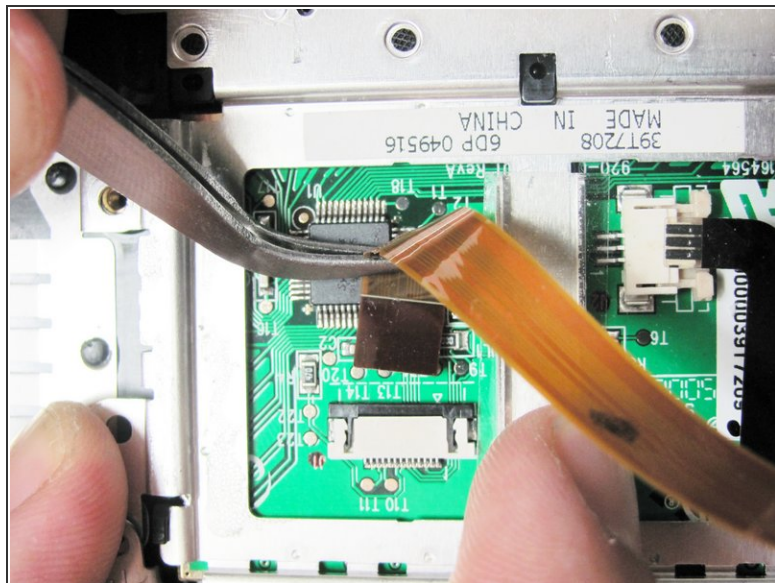
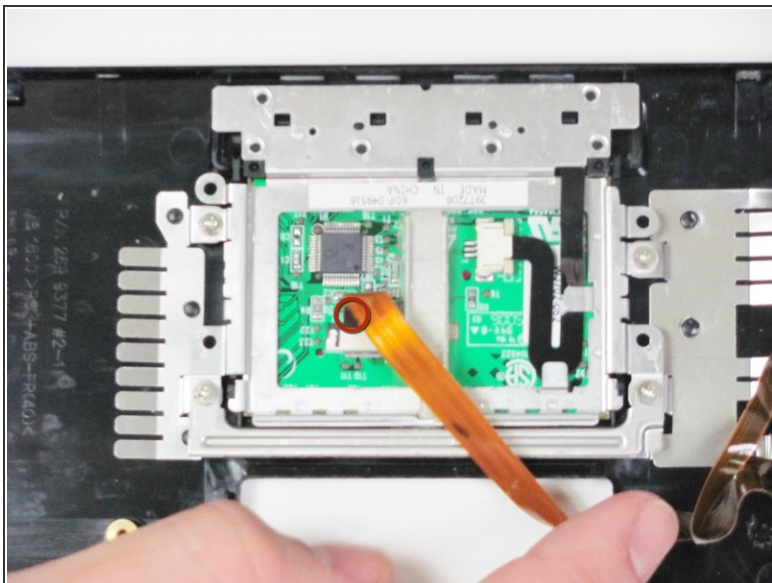
- Using your fingers, remove the plastic film that covers the two connectors to the touchpad.

Step 8



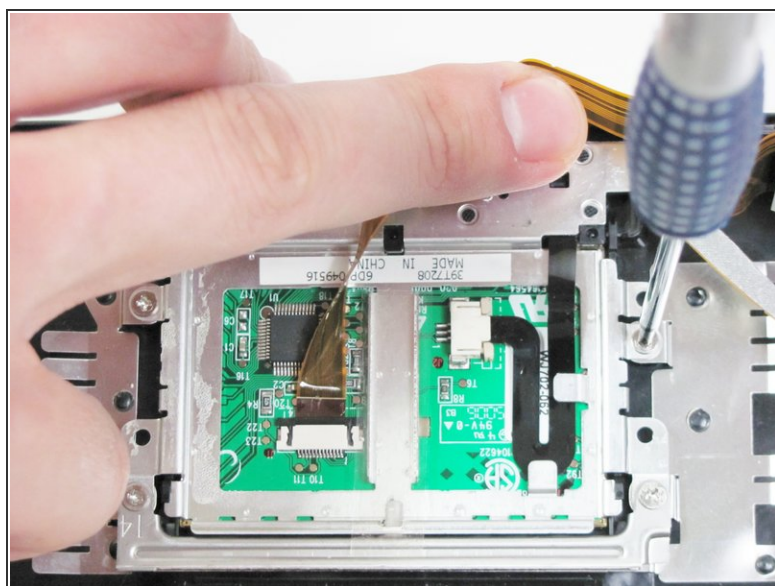
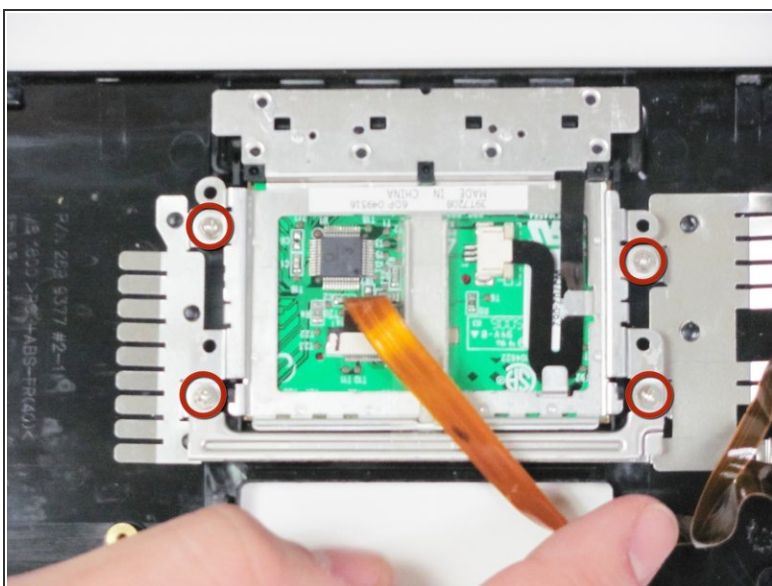
- Identify the connector with the black cables.
- In order to disengage the connector, use tweezers to pull out on the two grey tabs
- Once the grey tabs have been disengaged, use tweezers to pull on the black cables and the connector will detach from the port.

Step 9



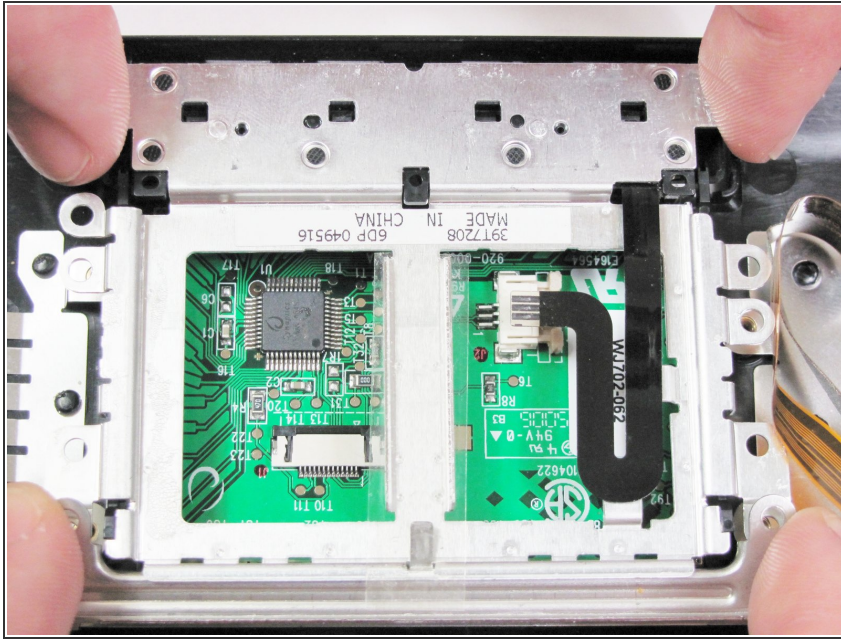
- Identify the connector with the orange cables.
- In order to disengage the connector use tweezers to pull the orange cable outward.

Step 10



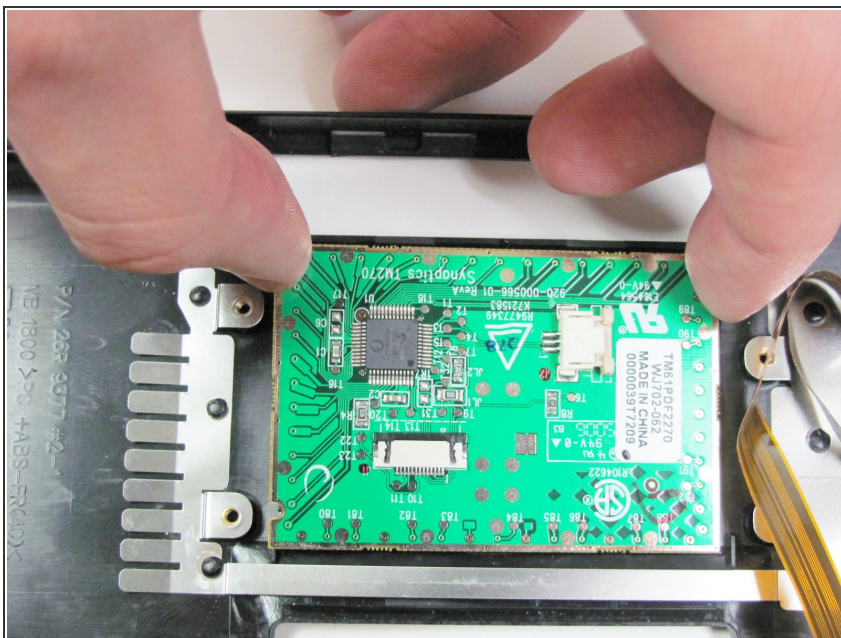
- Use a #0 Phillips screwdriver to unscrew the four 3.4 mm screws circled in red.

Step 11



- Using your fingers, remove the metal framing surrounding the touch pad by pulling upwards on each of the four corners.

Step 12



- Remove the touch pad by lifting it out of the palm rest with your fingers.

To reassemble your device, follow these instructions in reverse order.