



IKEA Drill Battery Replacement

The guide will accomplish the repair of battery failure for the FIXA drill from IKEA. The guide shows how to replace the battery by disassembling the drill.

Written By: Emma Hoogenboezem



INTRODUCTION

The requirements for replacing the battery are the usage of a 4 mm Phillips screwdriver, a soldering iron station, a utility knife, heat shrink tubes and two lithium batteries (3.6 V). Make sure how to use a soldering iron, especially in combination with batteries. If you are not familiar with (replacing) batteries, it might be a good idea to search for some information about how batteries work. Last but not least, create a work environment with good lighting and a clean desk. The replacement requires attention and concentration.



TOOLS:

- [Heat Shrink Tubing Assortment](#) (1)
- [Soldering Iron](#) (1)
- [Solder](#) (1)
- [Utility Knife](#) (1)
- [Duct Tape](#) (1)
- [Phillips #00 Screwdriver](#) (1)



PARTS:

- [Lithium Ion Battery 3.6V](#) (2)

Step 1 — Battery



- Use a 4 mm Phillips screwdriver to remove the seven screws to disassemble the housing of the drill.

Step 2



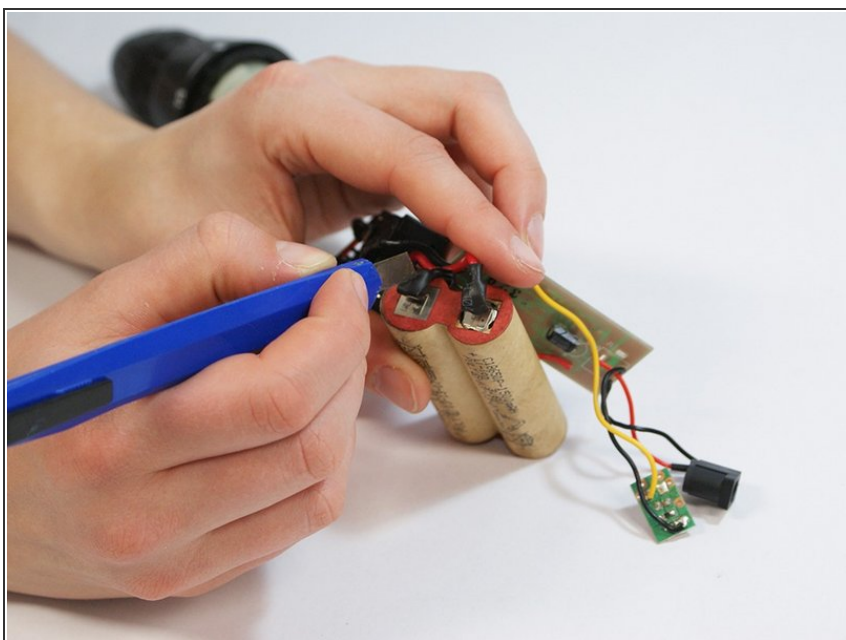
- Remove the sticker carefully from the bottom.

Step 3



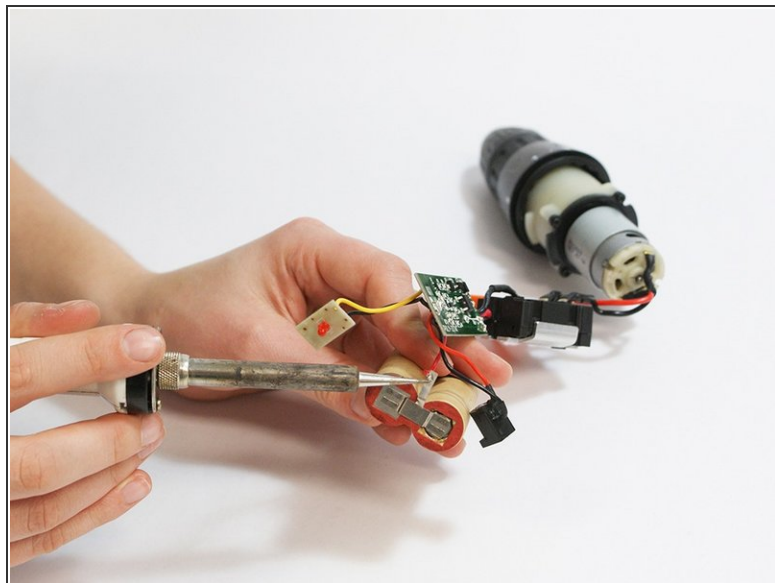
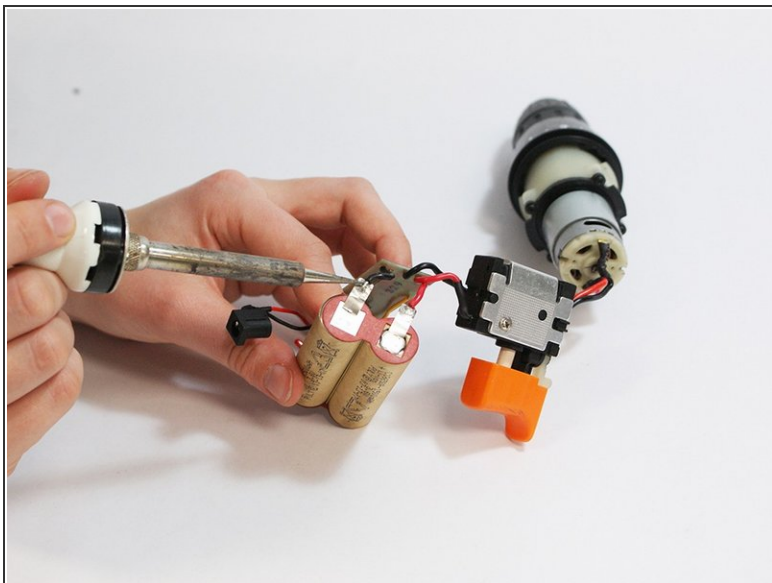
- Open the housing of the drill.
- ⓘ While opening place the rotation switch apart.
- Detach the electric circuit and place it next to the drill.

Step 4



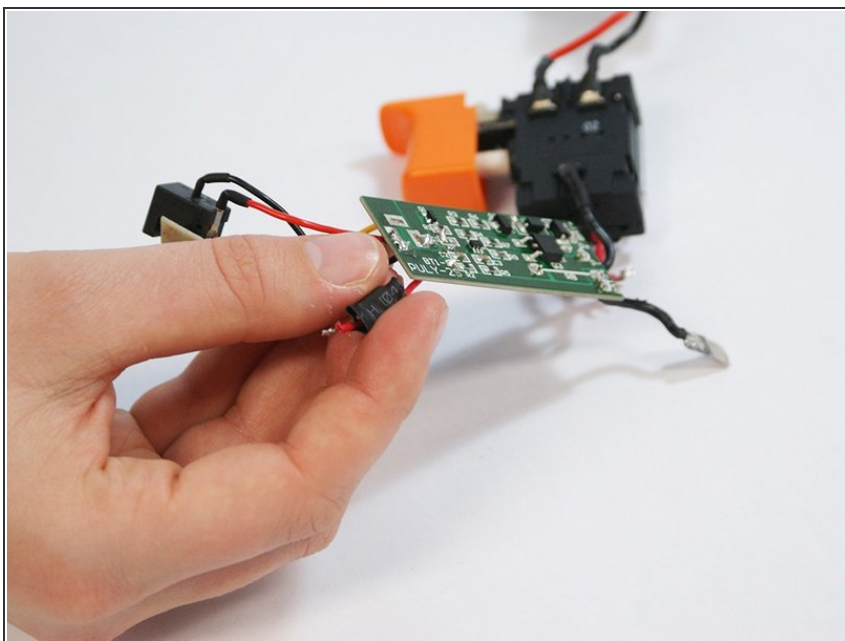
- Cut each tubing from the three wires of the battery with a utility knife.

Step 5



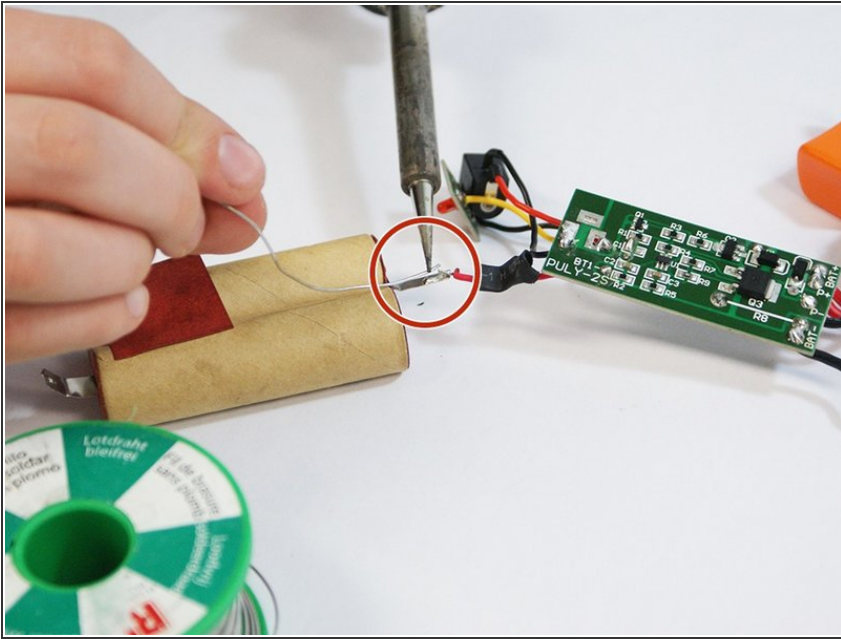
- Disconnect the three wires of the battery with a soldering iron.

Step 6



- Place each new tubing (three in total) on the battery wires through sliding them on each wire.

Step 7



- Attach the two batteries to each other with tape, in case you have two separate batteries.
- Use solder and a solder iron to attach the new battery to the wires.
- ⓘ The black wire should be connected with the negative pole of the two-wire side.
- ⓘ The wire should be warm enough to solder the battery to the wire.
- Slide the tubings on each connection and heat each tubing with a lighter to make them shrink.

Step 8



- Place the electric circuit and the rotation switch back into the housing.

Step 9



- Put the housing back on the drill through clicking and closing it.
- Put the seven screws back into the housing with the Phillips screwdriver.