



IQ AMERICA VD-8810L Battery Replacement

This guide will show users how to replace the batteries on the remote for the IQ AMERICA VD-8810L.

Written By: Jackey Lau



INTRODUCTION

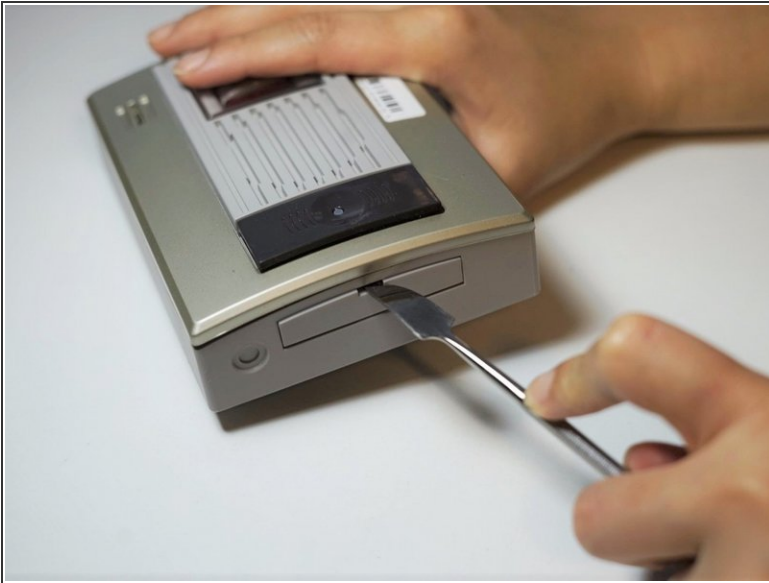
When your IQ America VD-8810L runs out of battery, you'll need to know how to replace them. Follow this guide to do so.



TOOLS:

- [Metal Spudger](#) (1)
 - [Phillips #0 Screwdriver](#) (1)
-

Step 1 — Battery



- Wedge the spudger into the slot of the panel on the bottom of the device.
- Rotate out the panel to reveal the screw holding the device together.

Step 2



- Use the Phillips head screwdriver to remove the screw.
- Separate the top and bottom halves of the device by pulling them straight apart.

Step 3



- Flip the top half of the device over to reveal the battery compartment.
- Remove the batteries from the device.

To reassemble your device, follow these instructions in reverse order.