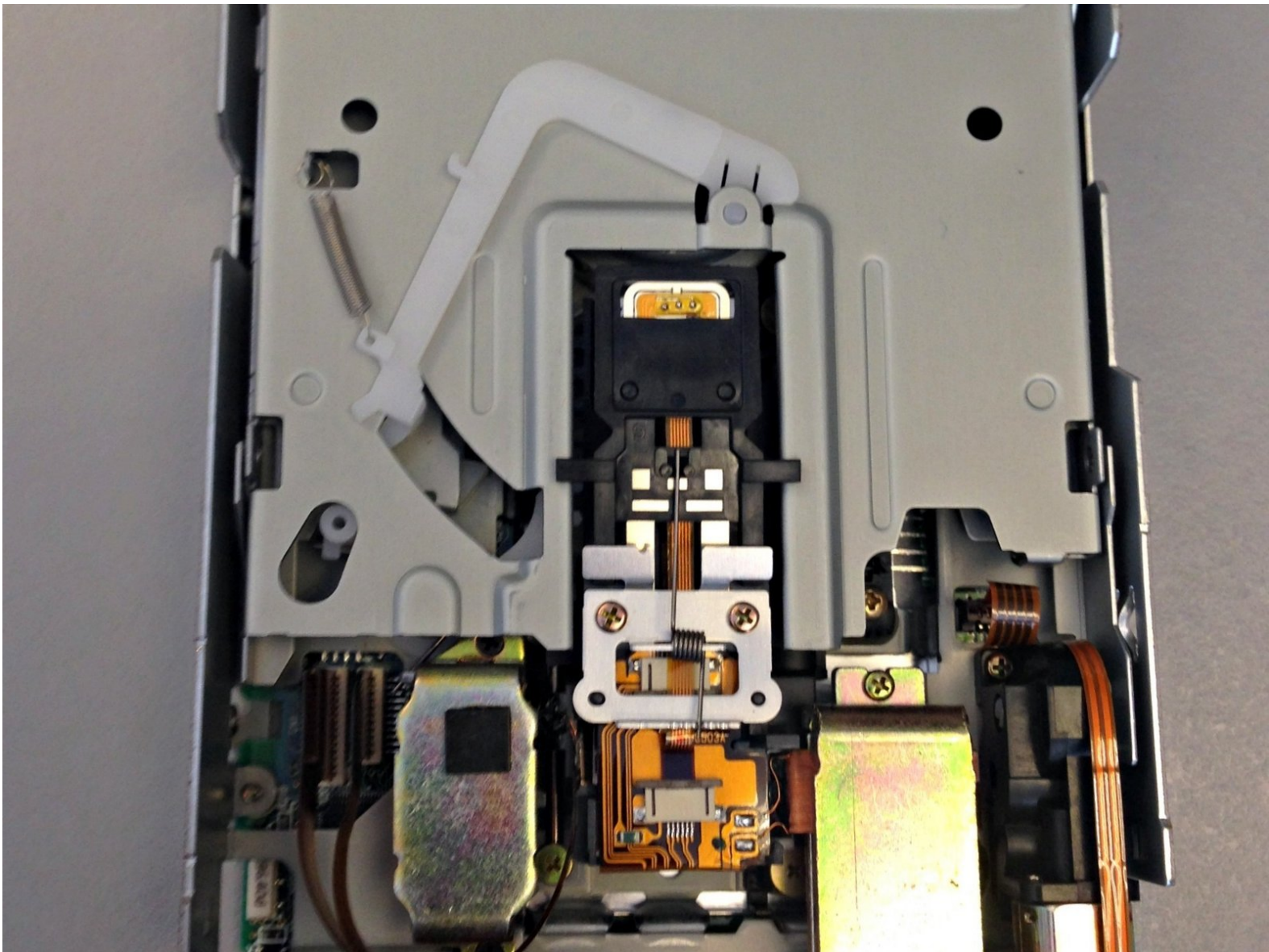




Imation Superdisk USB Drive Plastic Arm Replacement

This guide will show you how to access the plastic arm on the Imation Superdisk USB drive and remove it.

Written By: Brittini





TOOLS:

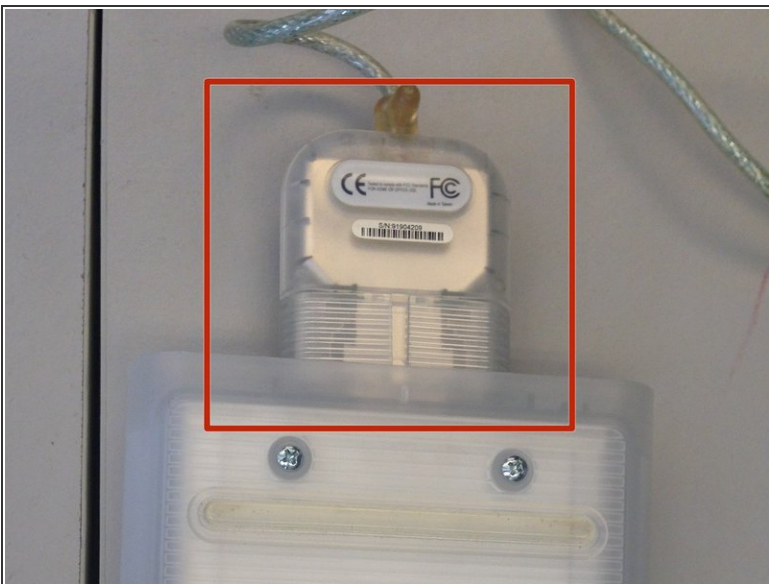
- [Fingers](#) (1)
-

Step 1 — Plastic Housing



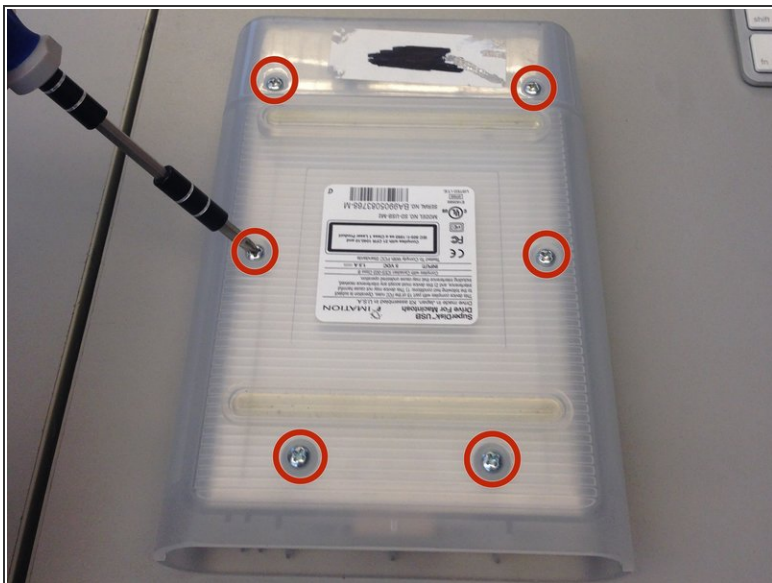
- Flip the device over so the bottom is facing up.
- You will know it is the bottom because there will be six silver screws visible.

Step 2



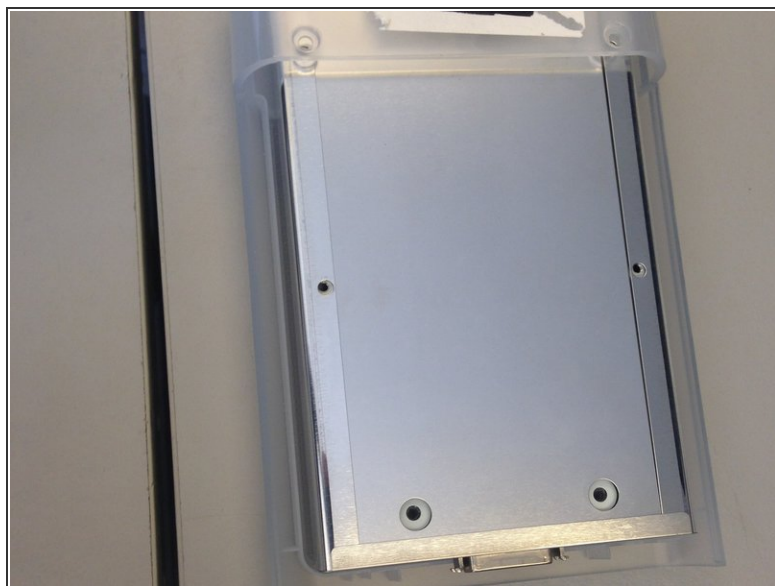
- Remove the USB converter device by gently pulling it out.
- ⚠ Do not pull the converter device out by the cord.

Step 3



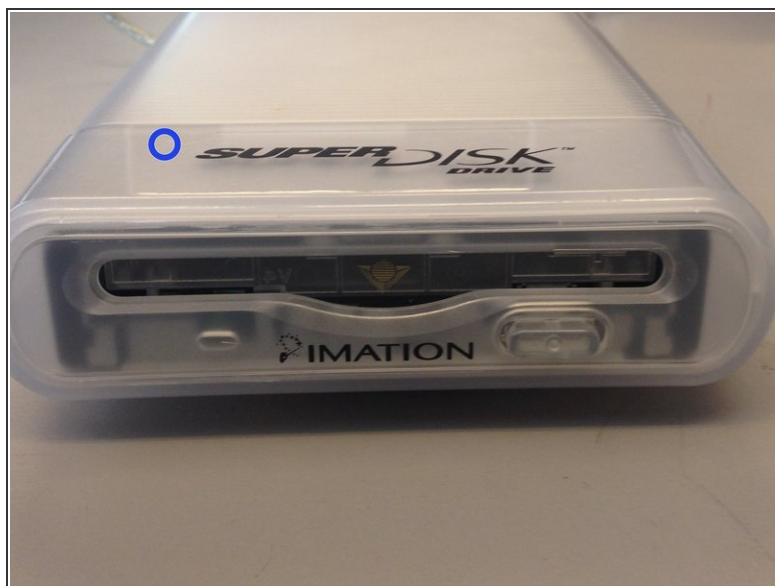
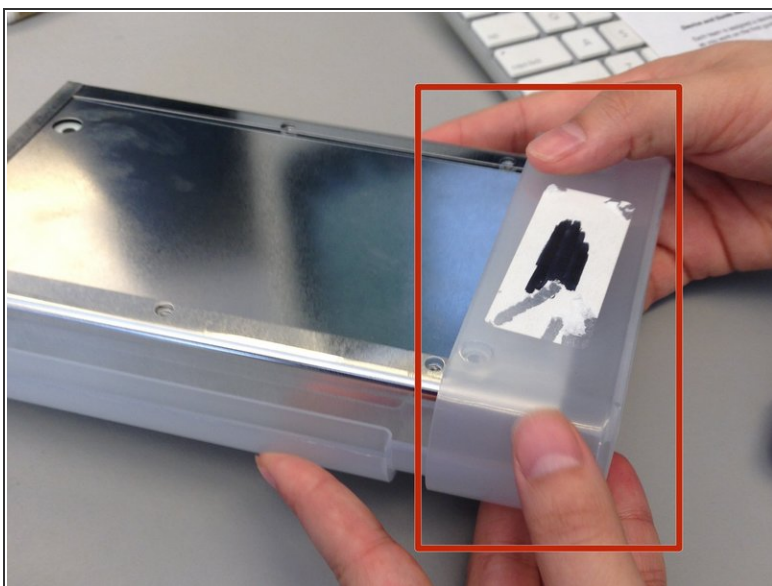
- Remove the six silver screws using a small Phillips head screwdriver.

Step 4



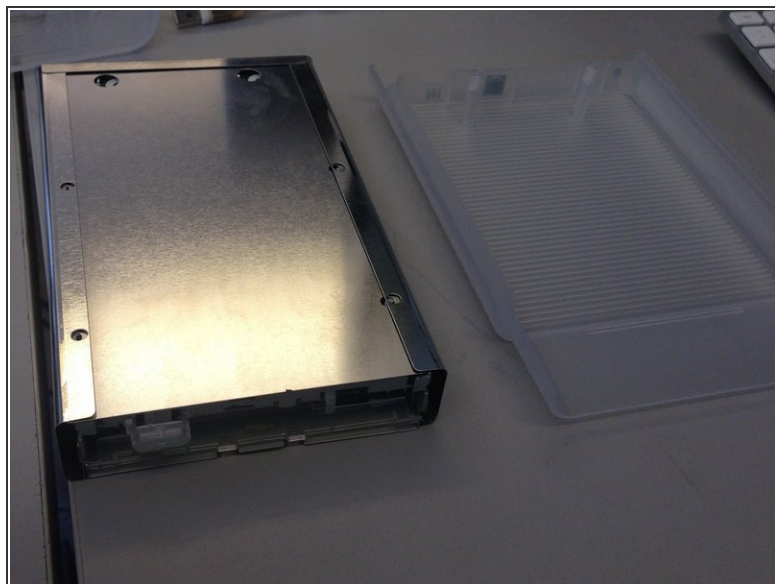
- Slide the bottom plastic panel of the shell down so it is free of the end cap and the top panel.
- Lift panel free of device.

Step 5



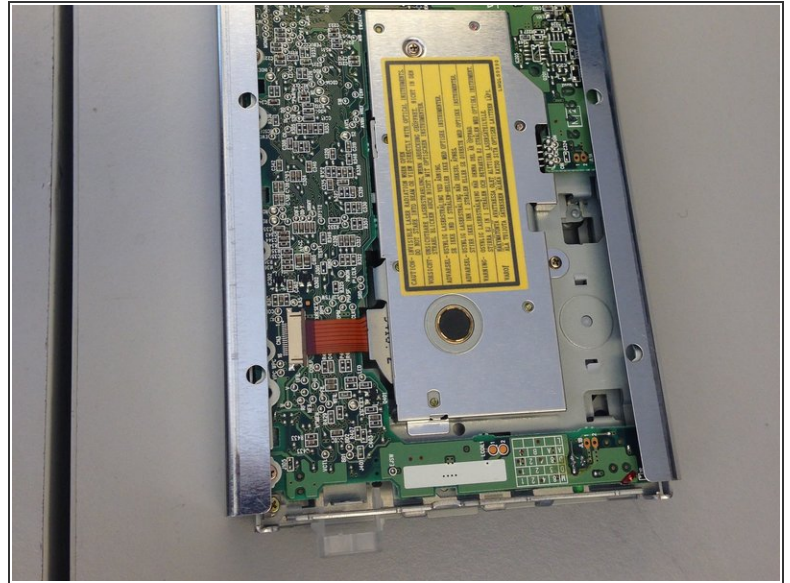
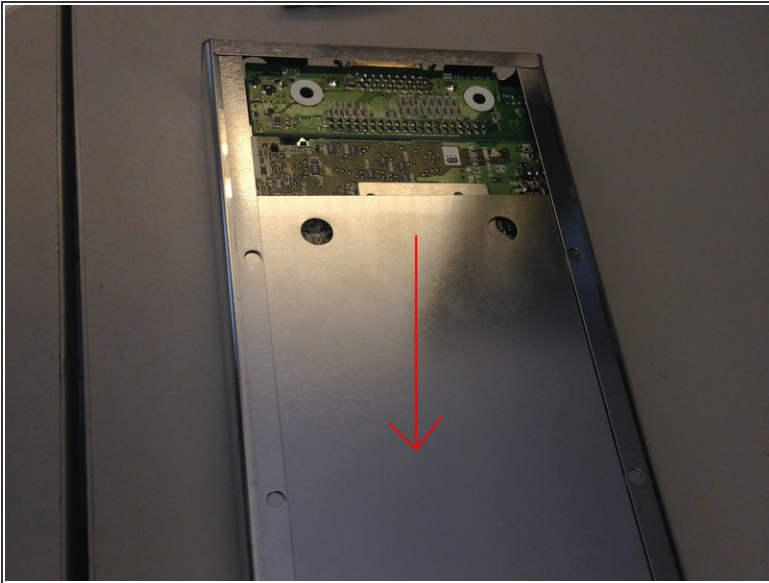
- Remove the plastic end cap by sliding it forward, freeing from the rest of the device.
- You can identify the end cap by noting the label "SuperDisk Drive" above where you would insert a floppy disk.

Step 6



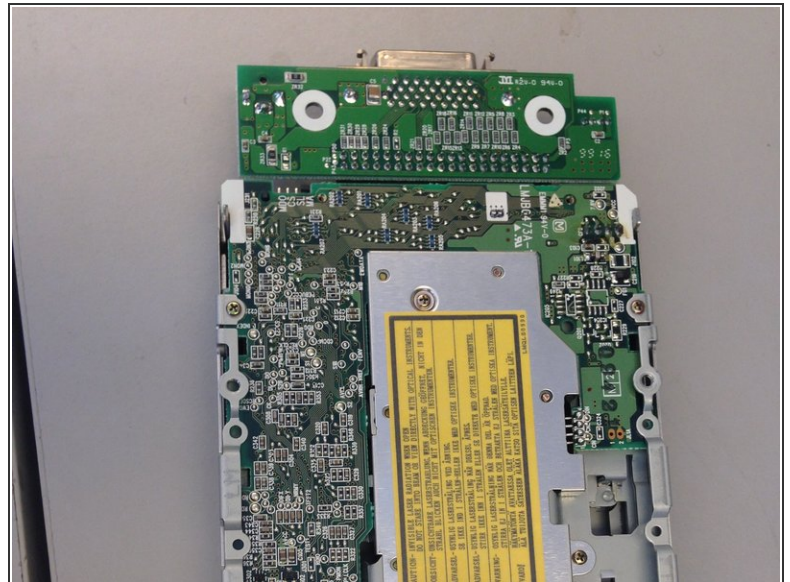
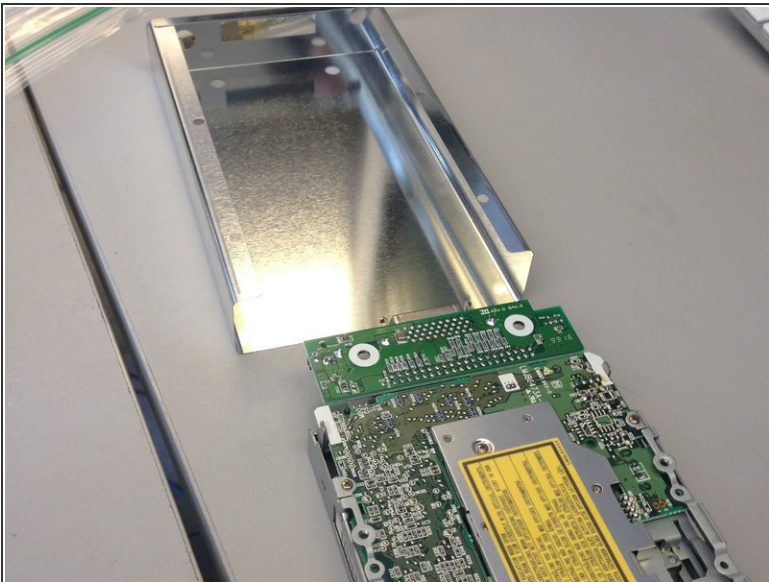
- Slide the metal housing out of the plastic shell.

Step 7 — Metal Casing



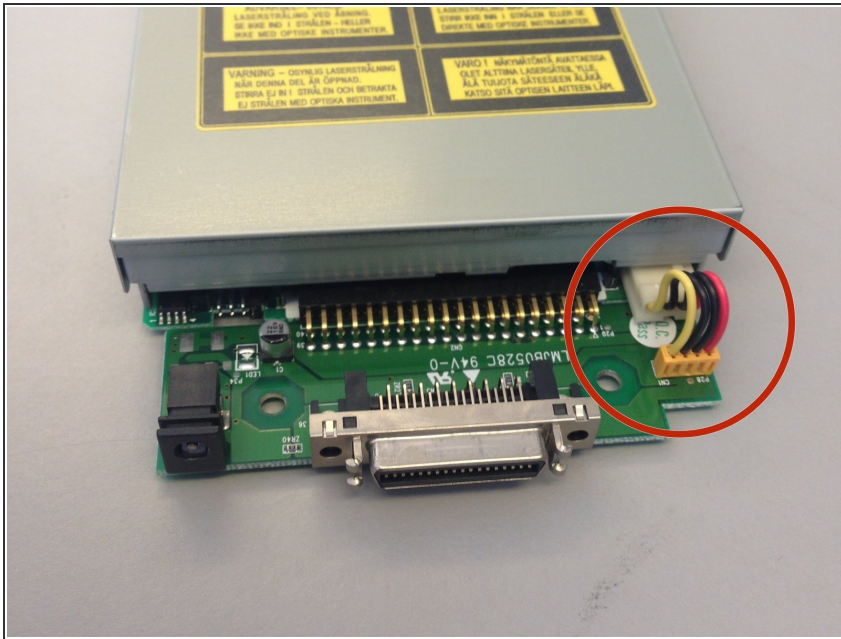
- Slide metal panel out of the metal casing.

Step 8



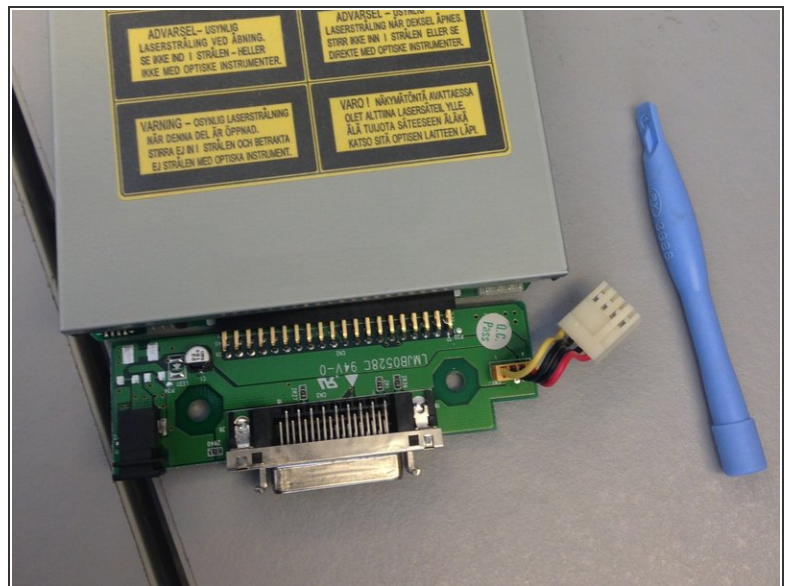
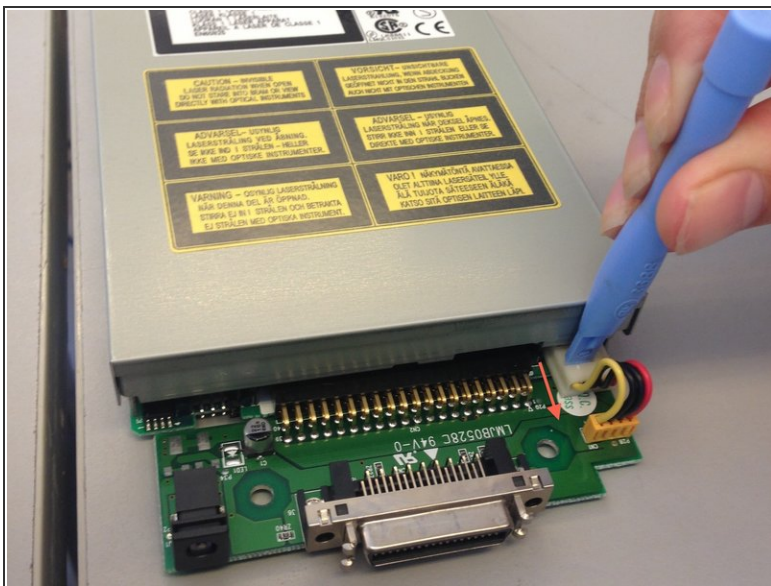
- Slide disk drive out of metal casing.

Step 9 — Daughter Board



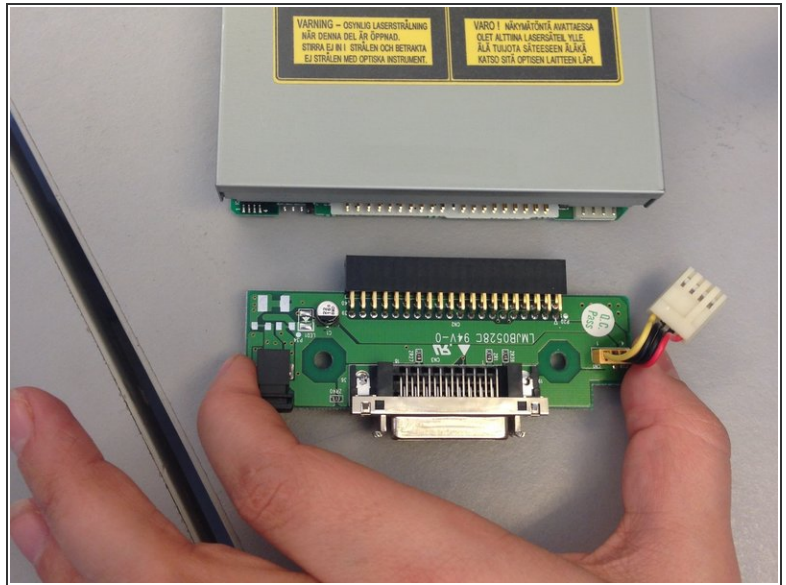
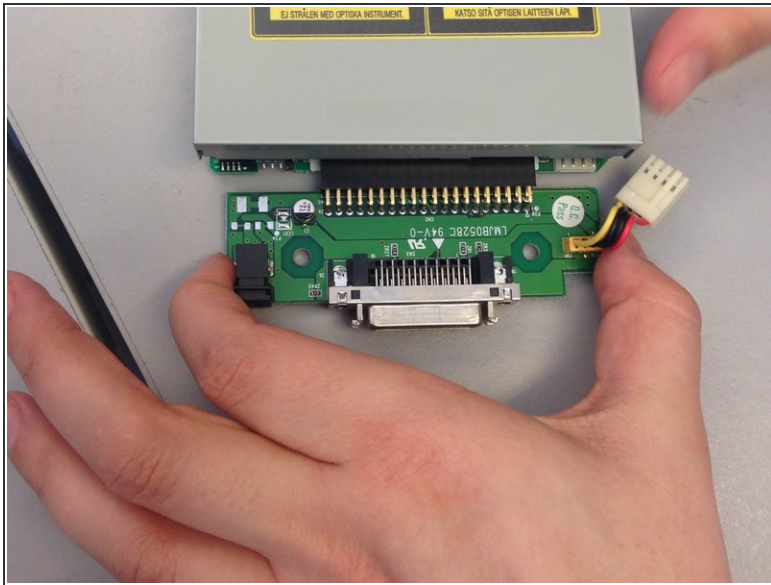
- Flip the disk drive over so the the plug on the daughter board is visible.

Step 10



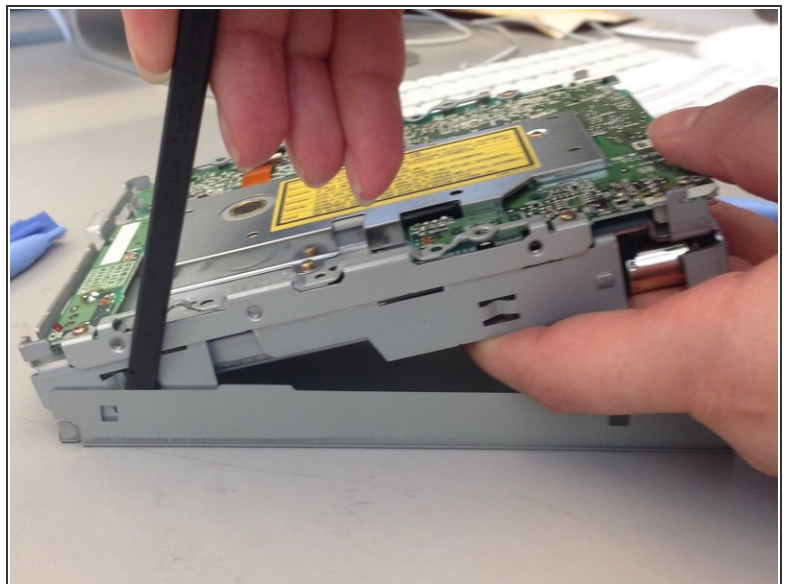
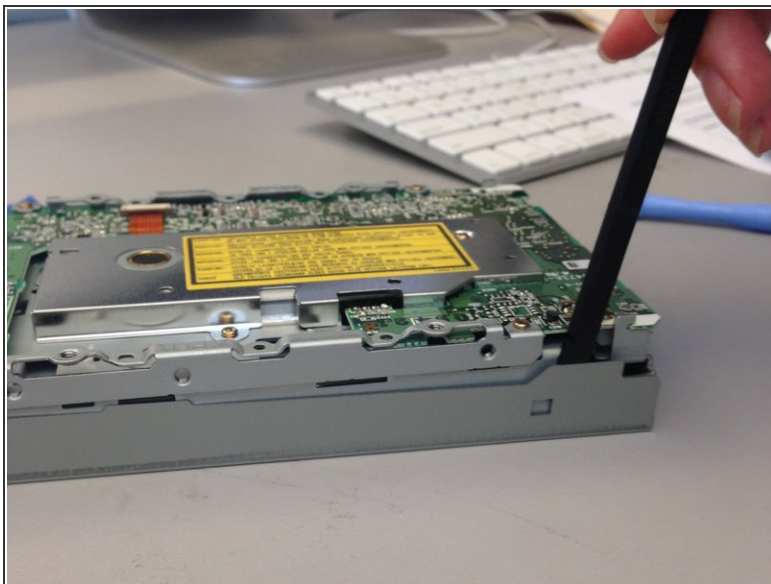
- Using an iPod opener put pressure on the white plug and pull backwards until the daughter board unplugs from the main unit.

Step 11



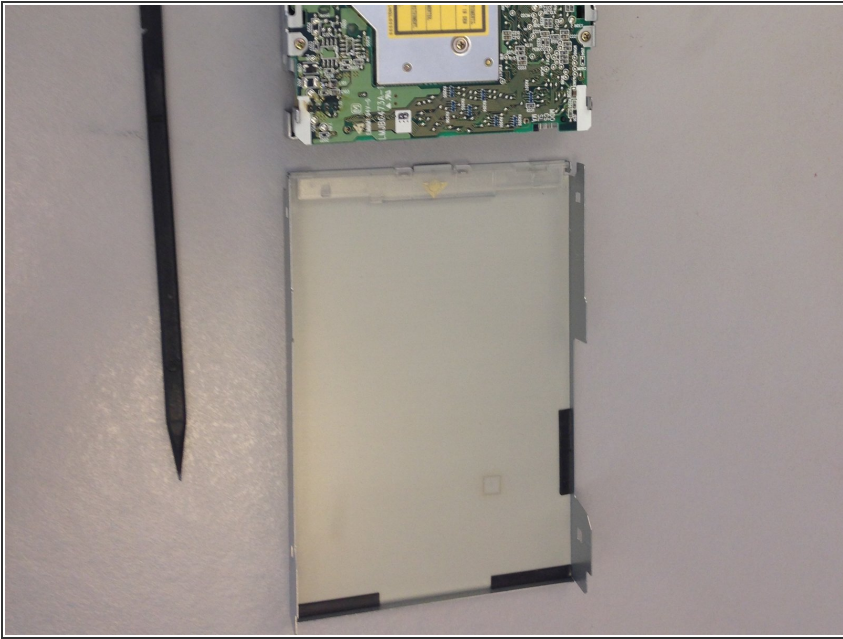
- Gently pull on the daughter board until it separates from the device.

Step 12 — Disc Drive Casing



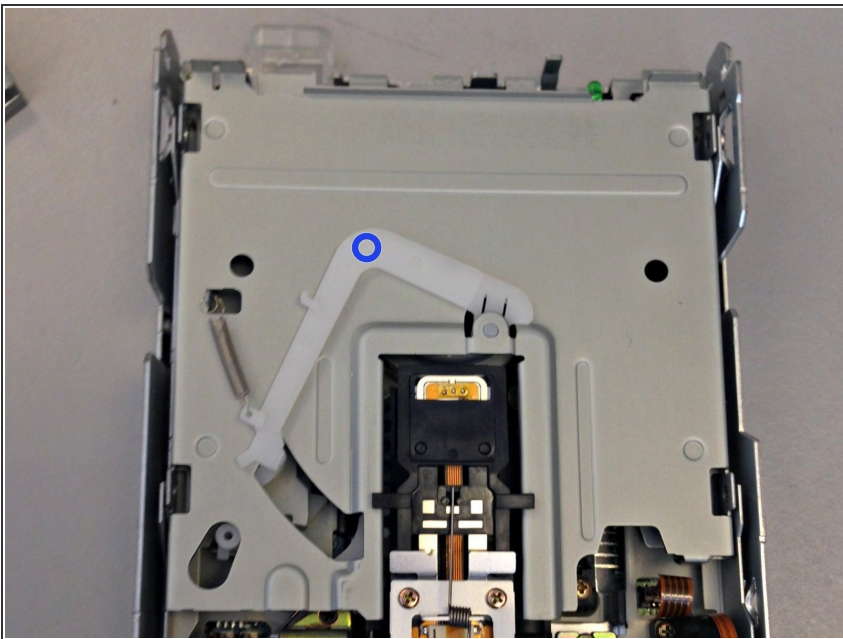
- Place a **plastic spudger** in between the disk drive and its metal casing. Use the spudger as a lever until the metal casing detaches from the disk drive.
- ⓘ You may have to use the plastic spudger in several spots along the metal casing.

Step 13



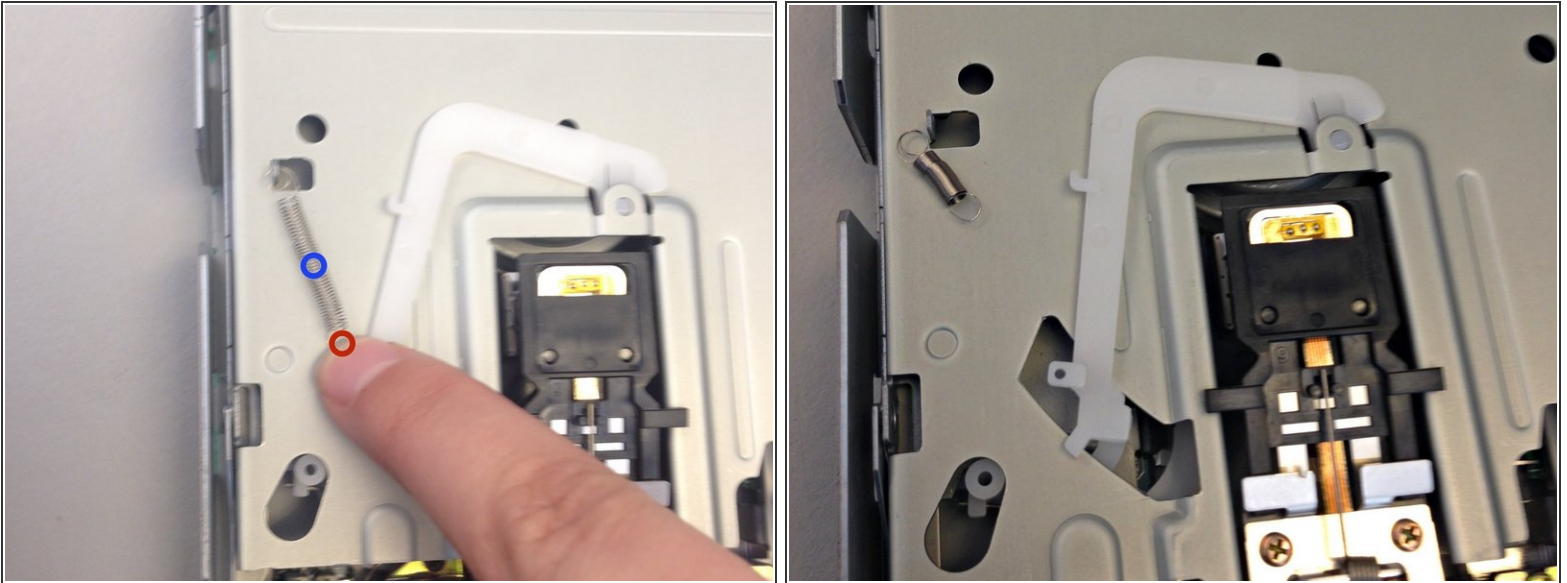
- lift the disk drive completely out of the metal casing and set it aside.

Step 14 — Plastic Arm



- Flip the device over so the plastic arm is face up.

Step 15



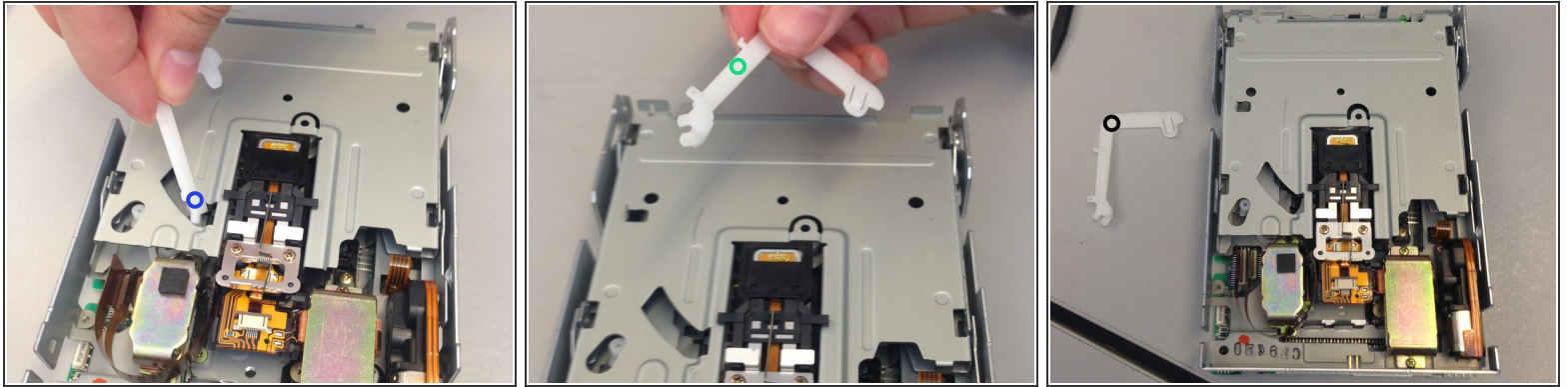
- Remove the small spring that connects the plastic arm to the disk drive.
- To keep the spring from flying in the air and getting lost, put your finger on one end of the spring to hold it in place while you detach the other end. It does not matter which end you chose to detach first.

Step 16



- Locate the tab with a raised dot on the immobile end of the plastic arm.
- Apply pressure on the plastic tab and slide it backwards to release that end of the arm from the disk drive.

Step 17



- Rotate the plastic arm until it fits through the opening in the disk drive and pull it out.
- Completely remove the plastic arm from the disk drive.
- Replace the arm if it is broken or set it aside and continue to your next task.

To reassemble your device, follow these instructions in reverse order.