



# Impuls Blender Electronic wire Replacement

This repair guide will help you repair your blender when it does not work anymore due to a broken elektronik wire.

Written By: Daan van der Sande



## INTRODUCTION

After a few months blending smoothies, the Impuls blender stopped working. We knew this might be the end of this cheap blender and tend to buy a new one. However fixing the blender is even cheaper than buying a new one and makes you feel good. That is why we started opening the blender and get to the inside to be able to use it again.



### TOOLS:

- [Philips screwdriver](#) (1)
- [Soldering Iron](#) (1)
- [Wire Stripper](#) (1)

*Optional*

- [heatshrink tubing](#) (1)
- [Heat Gun](#) (1)



### PARTS:

- [Electronic Wire](#) (1)

## Step 1 — Electronic wire



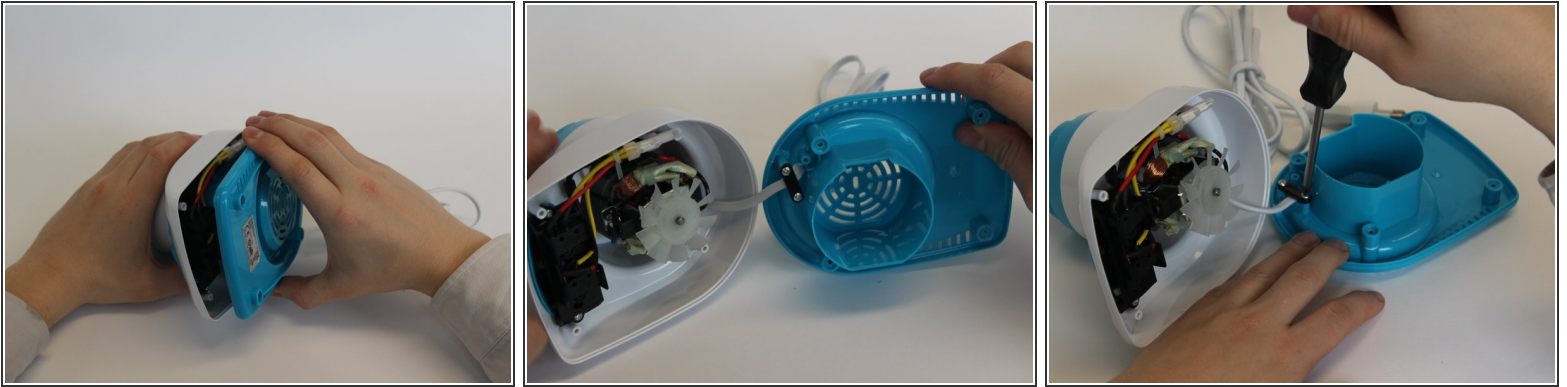
- Here you see the Impuls blender
- First, separate the the blender jar from the bottom part by turning it and put it aside.

## Step 2



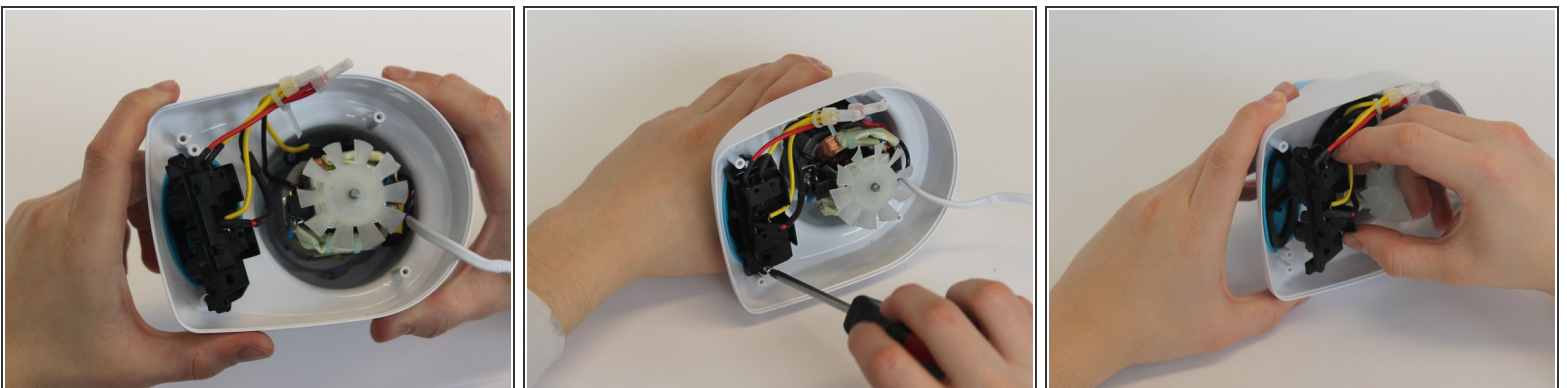
- Turn the bottom part over and look at the bottom.
- Take the rubber parts out of the 4 holes to reveal the screws.
- Take the 4 screws out using a Phillips screwdriver.

### Step 3



- Take the blue bottom part off the rest of the product to reveal the inside.
- Unscrew the black piece to be able to slide the blue part away from the rest.

### Step 4




- When you look to the inside, you see that there are two components; the buttons and the motor.
- Unscrew the part that contains the buttons and take it off.

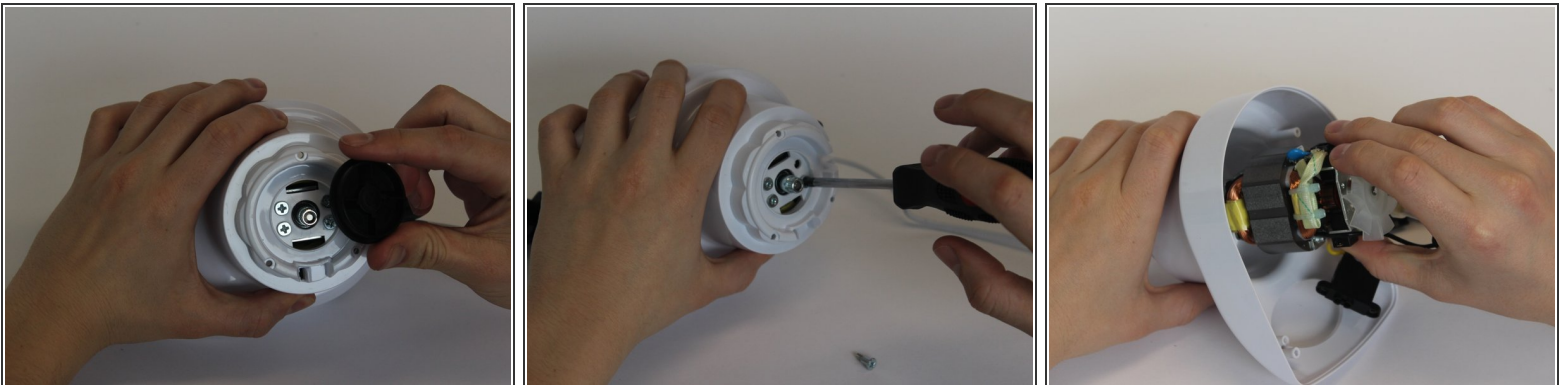


## Step 5



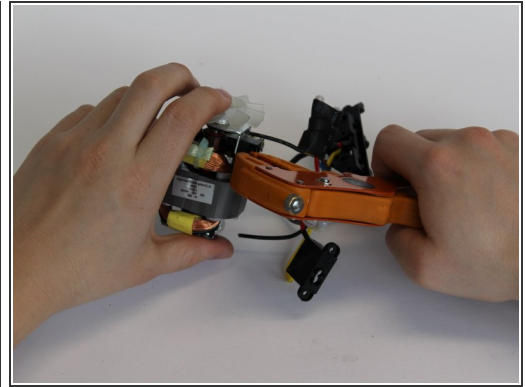
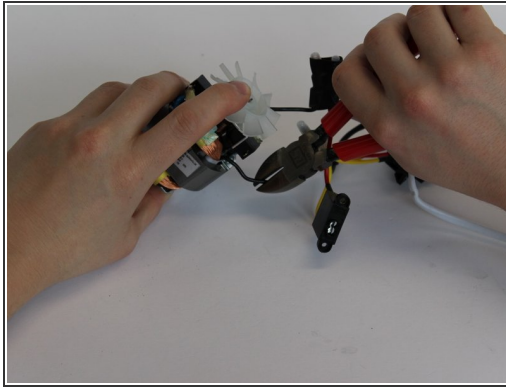
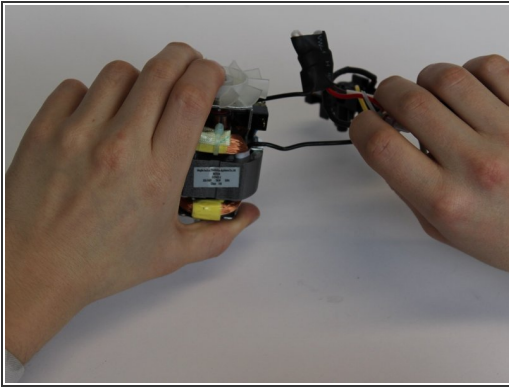
- Take out the 3 screws that are deep inside.
  - Take off the blue part on top that was fixed with those screws.
  - Pull the black disc out by using the screwdriver as lever from multiple sides.
-  This will take some force, so do not be afraid it will break.

## Step 6



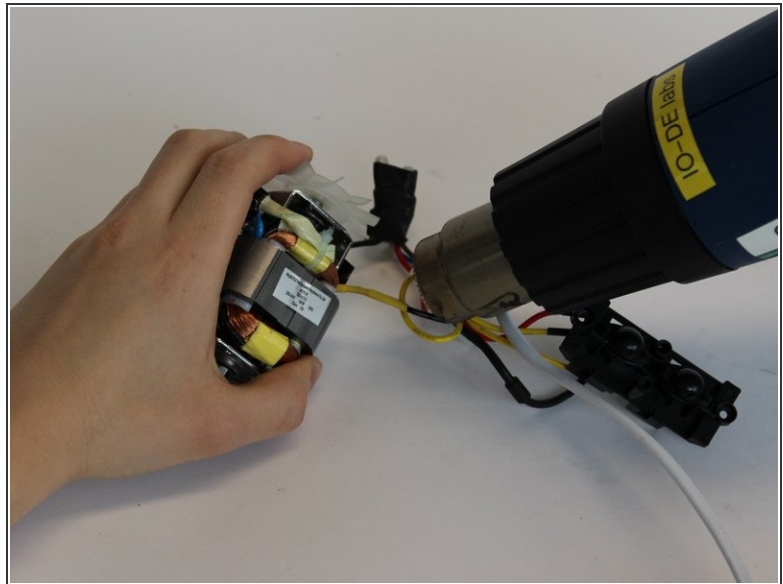
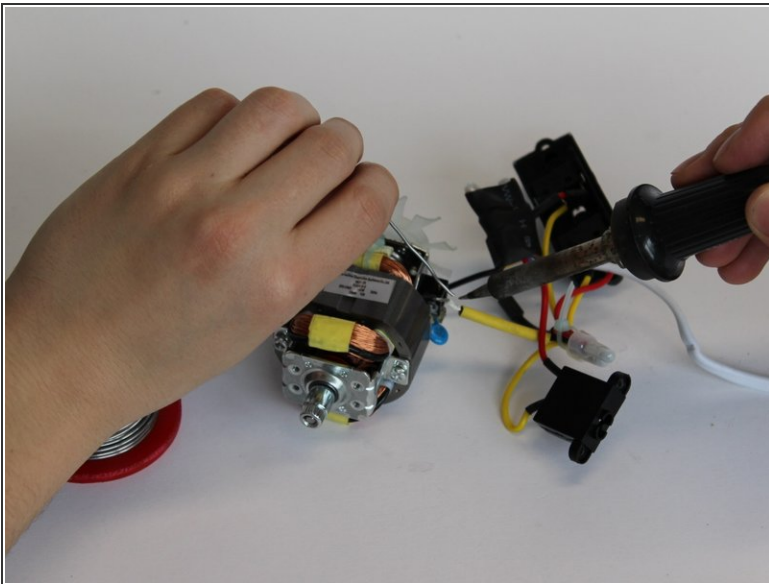
- When you have taken off the black piece and revealed the 4 screws, unscrew them all.
- Take out the motor part and the rest of the electronics.

## Step 7



- Find the fraction in the wire.
- Cut off the broken part
- Strip both sides of the wire that have to be attached again.

## Step 8



- If you will use a shrink sleeve to cover the electronic wire, it has to be put on the wire first. Otherwise if electrical tape is used, this can be done afterwards.
- Solder the two wires with a soldering iron.
- Shrink the sleeve with a heater or put the electrical tape around the soldered wire.

To reassemble your device, follow the instructions in reverse order.