



Impuls LED Alarm Clock Radio Disassembly

This guided will give a good overview of the disassembly of the Impuls Clock Radio.

Written By: Pascale van Hemert



INTRODUCTION

This guide provides a step-by-step plan for disassembly of the Impuls LED Alarm Clock Radio. The price of the clock radio is relatively low, it is 16.95 euros at bol.com. The guide is made by 5 Industrial Design students at the TU Delft.



TOOLS:

- [Phillips #1 Screwdriver](#) (1)
-

Step 1 — Impuls LED Alarm Clock Radio Disassembly



- Unscrew the 4 base screws at the bottom with the Phillips 1 screwdriver.

Step 2



- Open the top and remove the transparent plastic cap.

Step 3



- Remove the 4 screws from the PCB.

i It is desirable to use 3 hands because you have to do 3 jobs: screw, hold the top and hold the bottom.

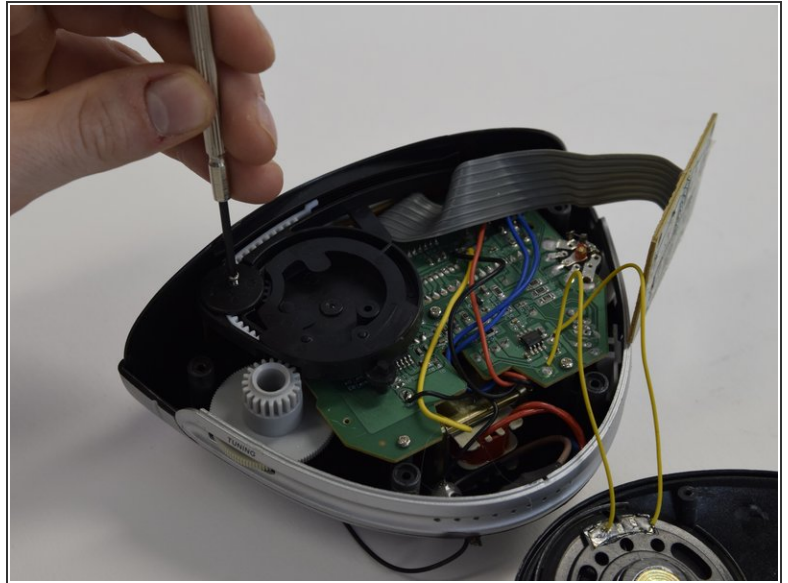
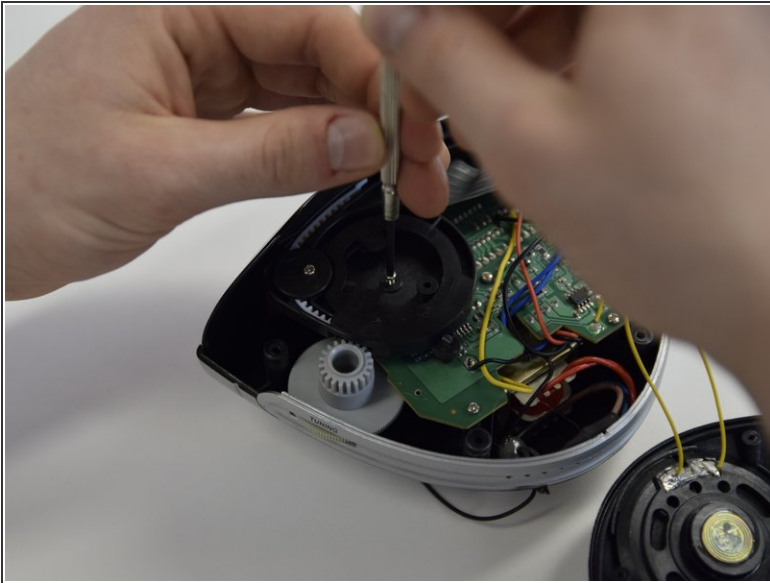
Step 4



- Remove/unclick 4 plastic buttons.

i There are 4 different types of buttons.

Step 5



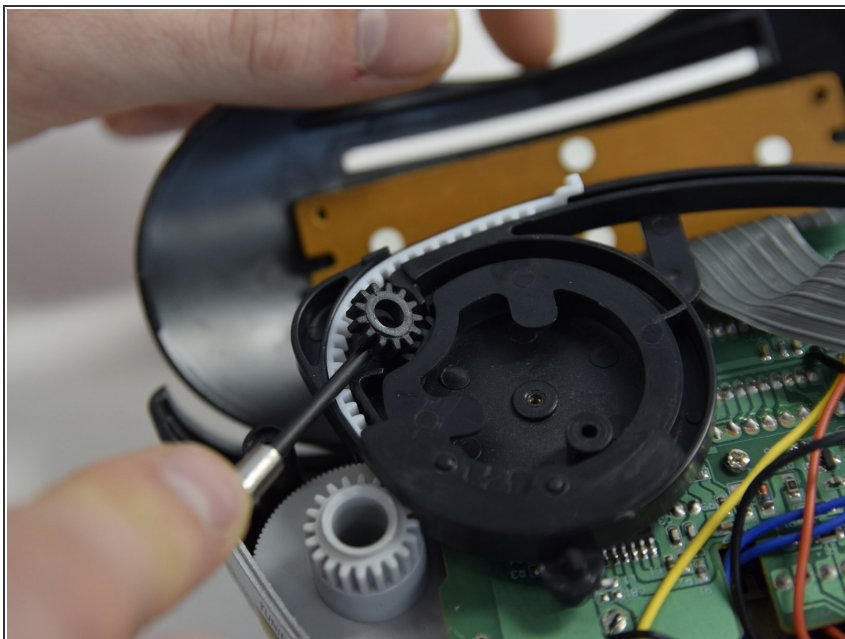
- Unscrew 2 screws of the radio tuning system.

Step 6



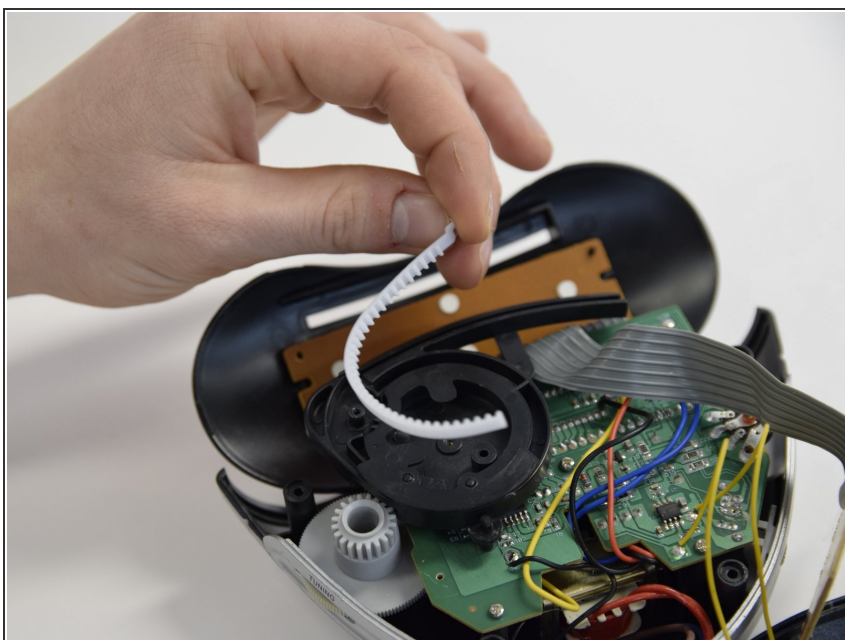
- Remove the gear that protects the cap.

Step 7



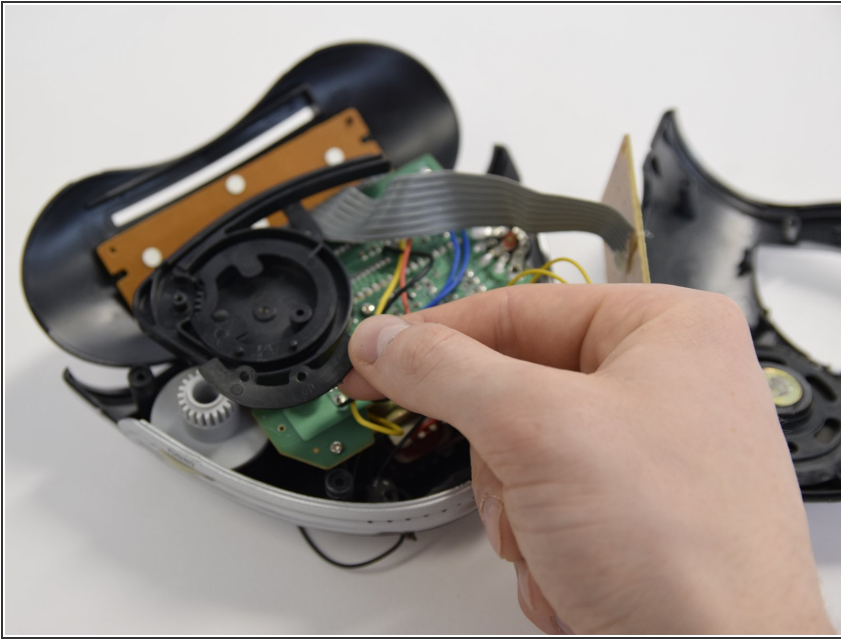
- Lift up the small gear.

Step 8



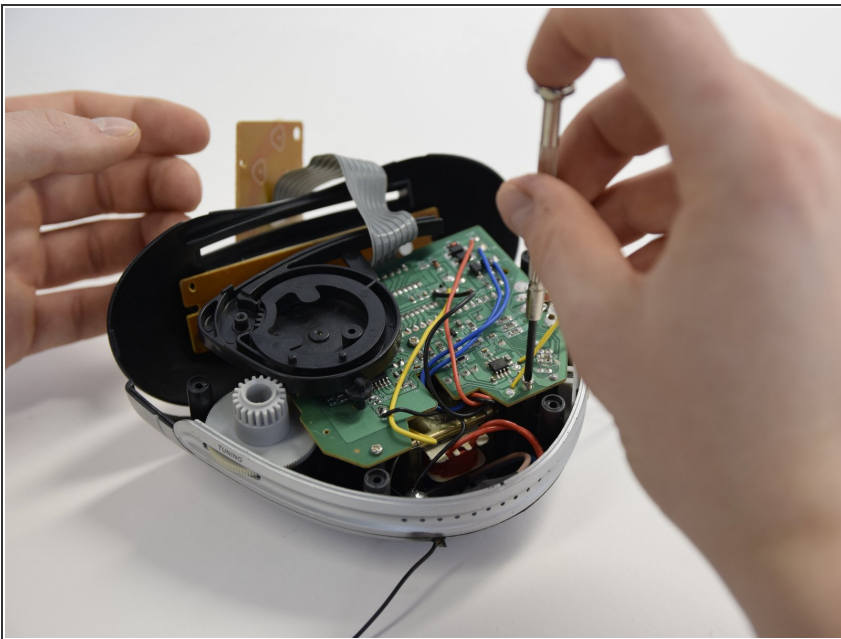
- Lift up the flexible pin rack.

Step 9



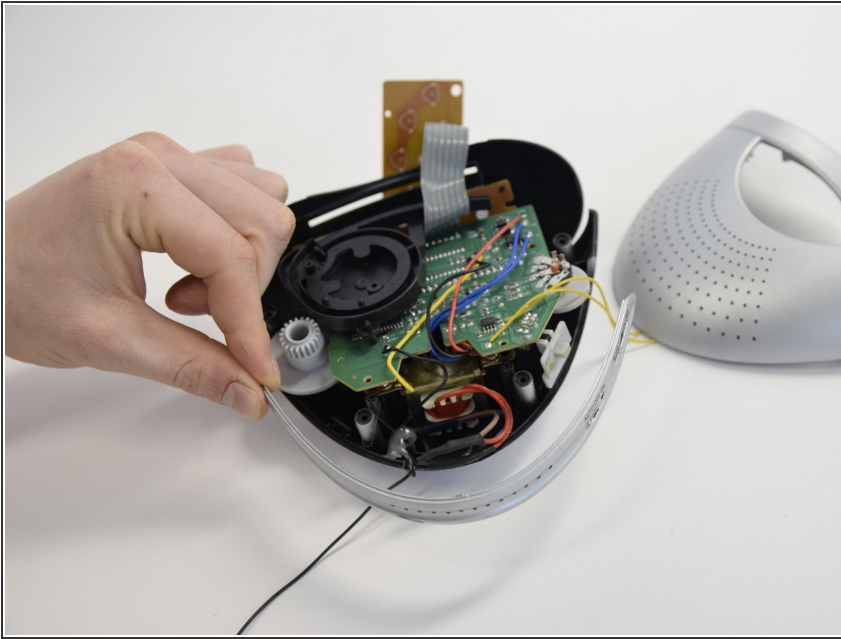
- Remove the flexible pin rack holder.

Step 10



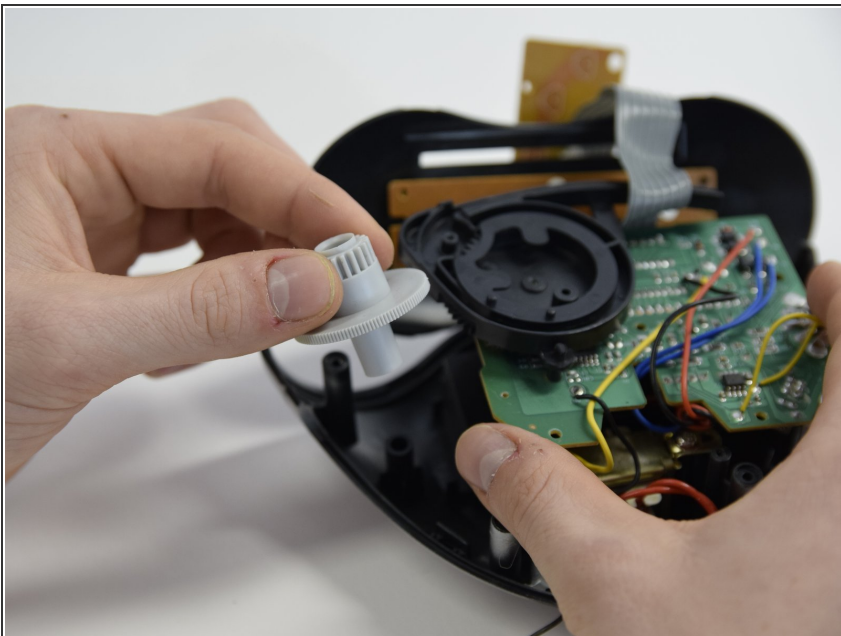
- Remove 3 screws of the big PCB.

Step 11



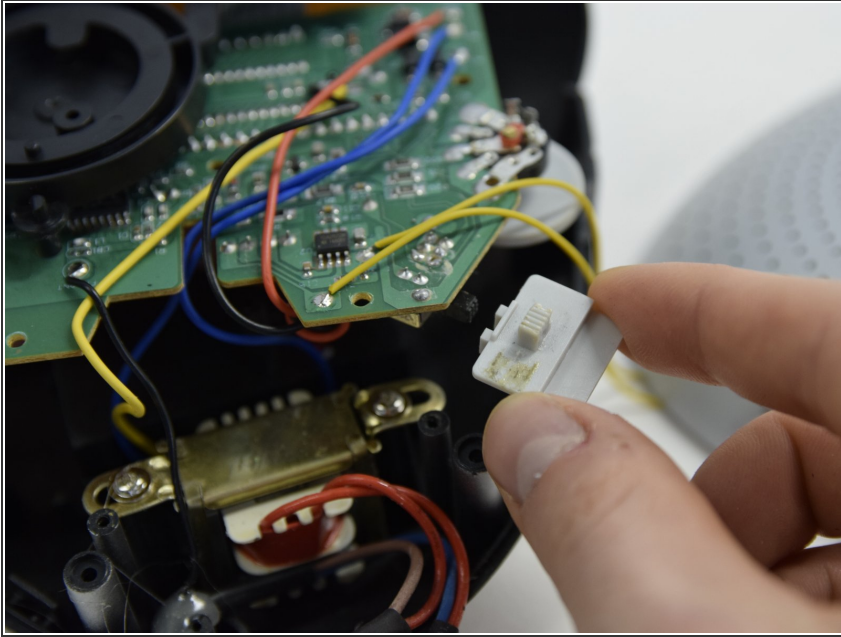
- Remove the backside of the casing.

Step 12



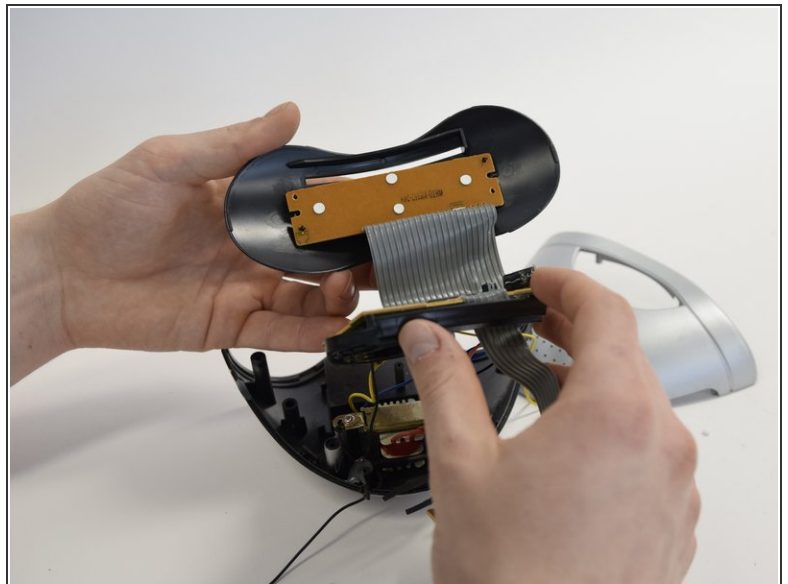
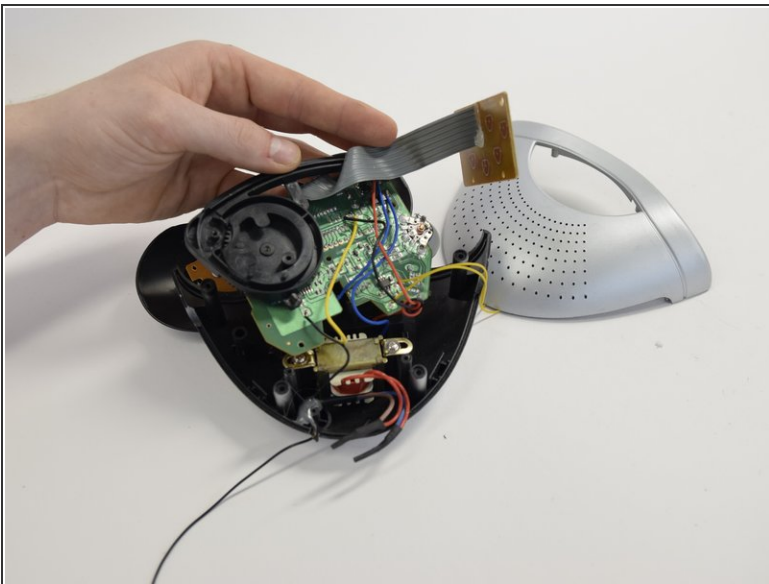
- Remove the grey double gear.

Step 13



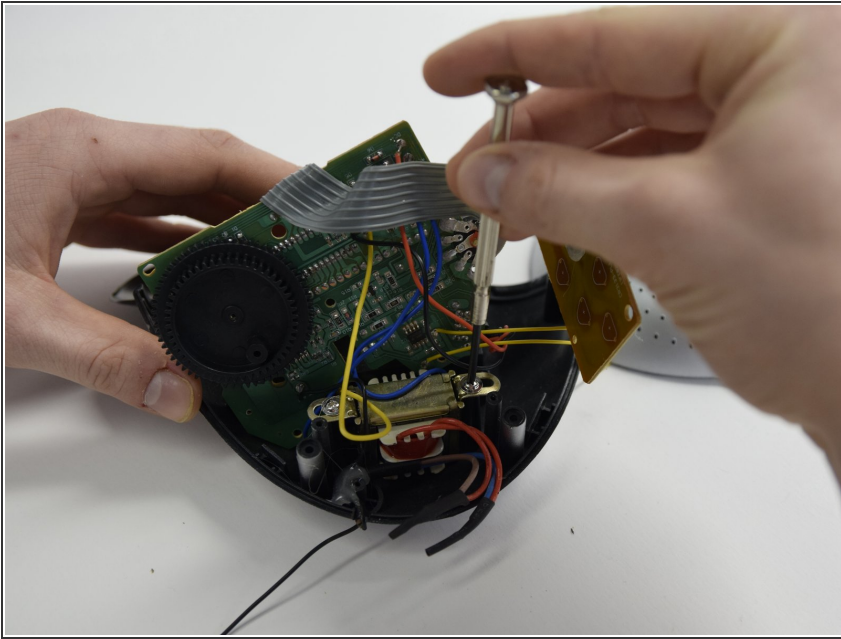
- Remove the switch casing.

Step 14



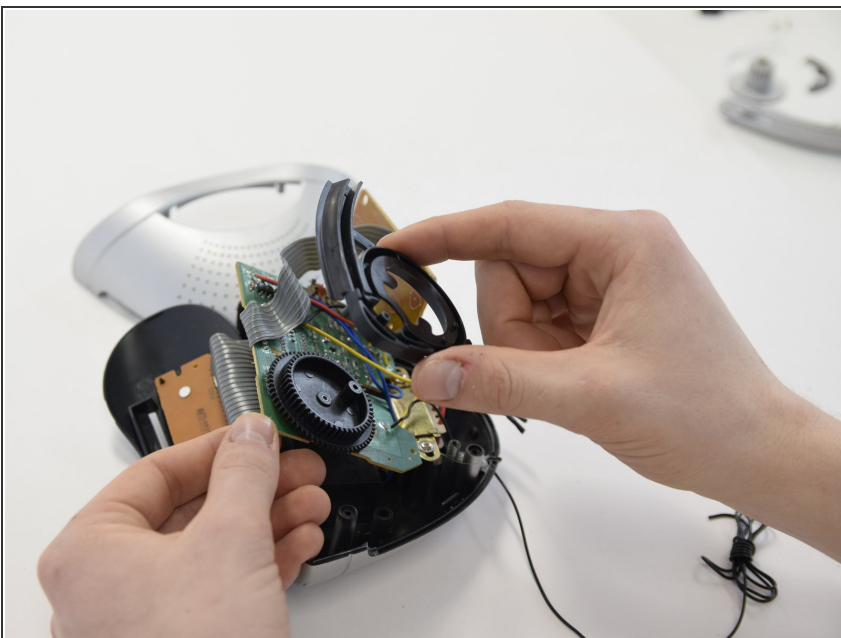
- Flip the big PCB.

Step 15



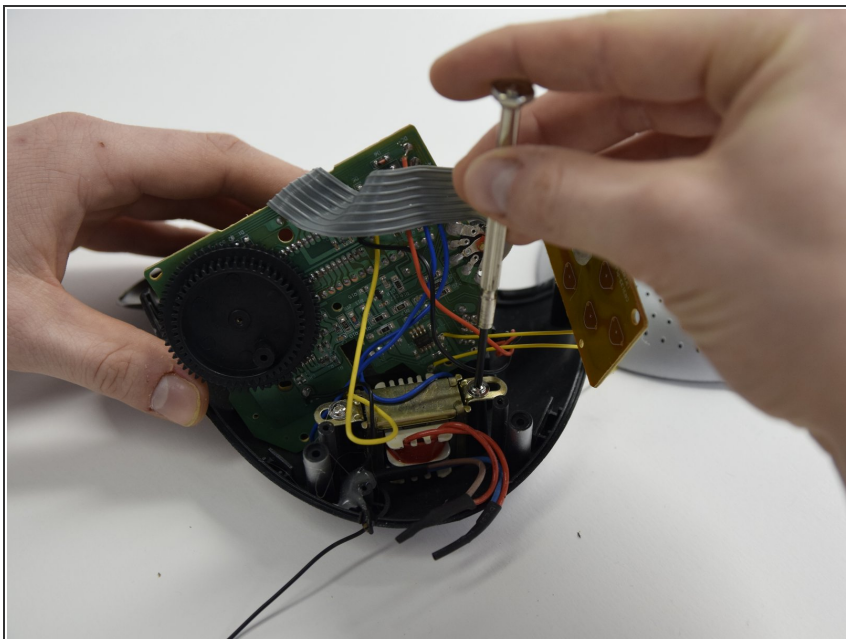
- Unscrew 2 screws on the back of the PCB the black gear house.

Step 16



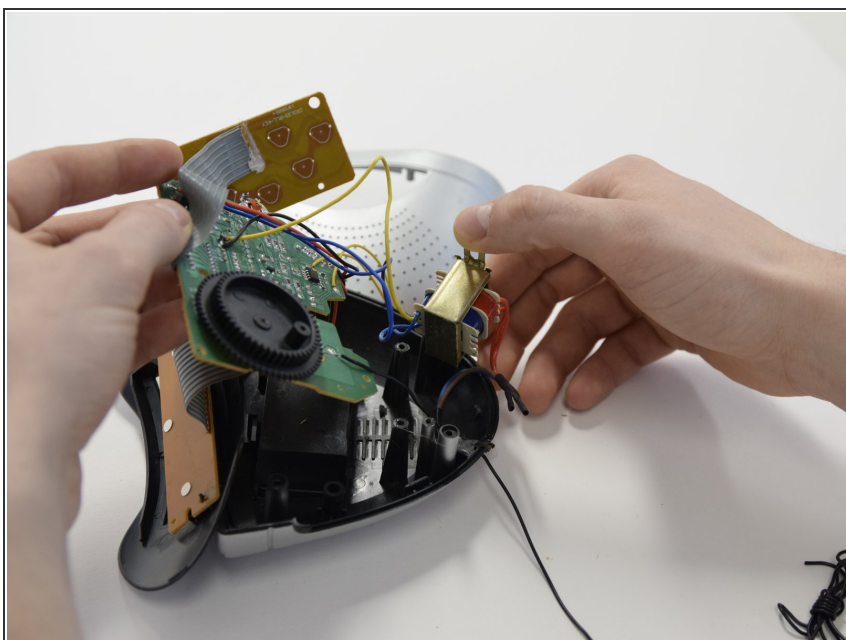
- Remove the black gear housing.

Step 17



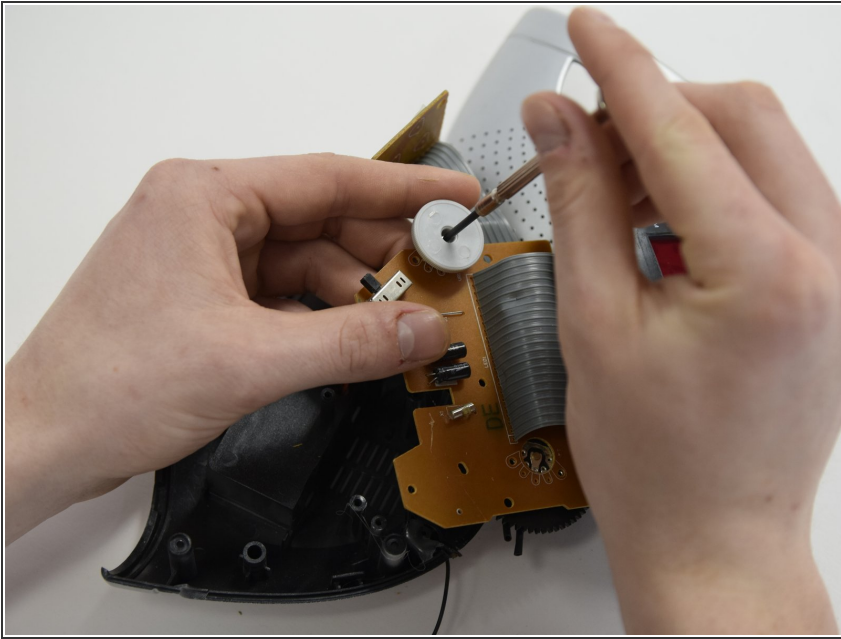
- Unscrew 2 screws of the electro magnet.

Step 18



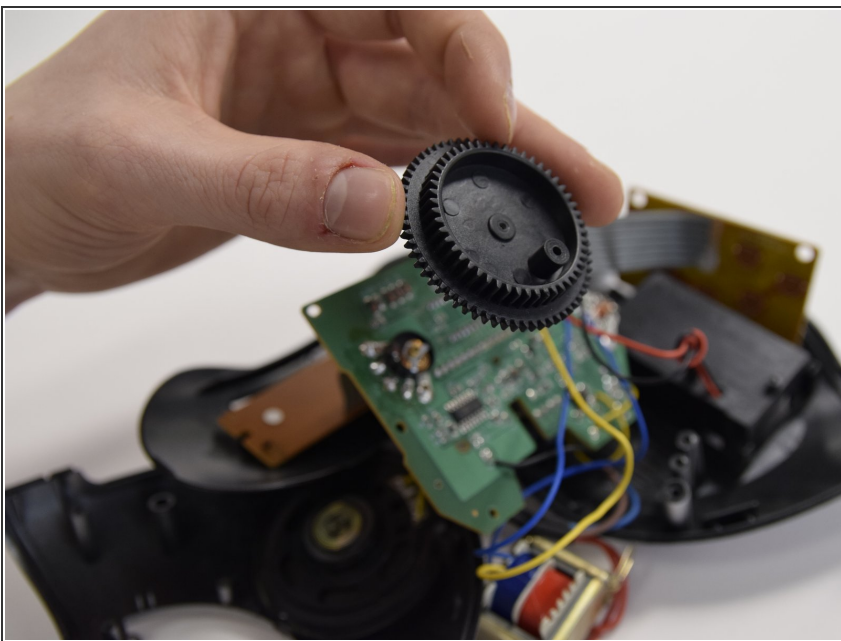
- Lift up the electro magnet.

Step 19



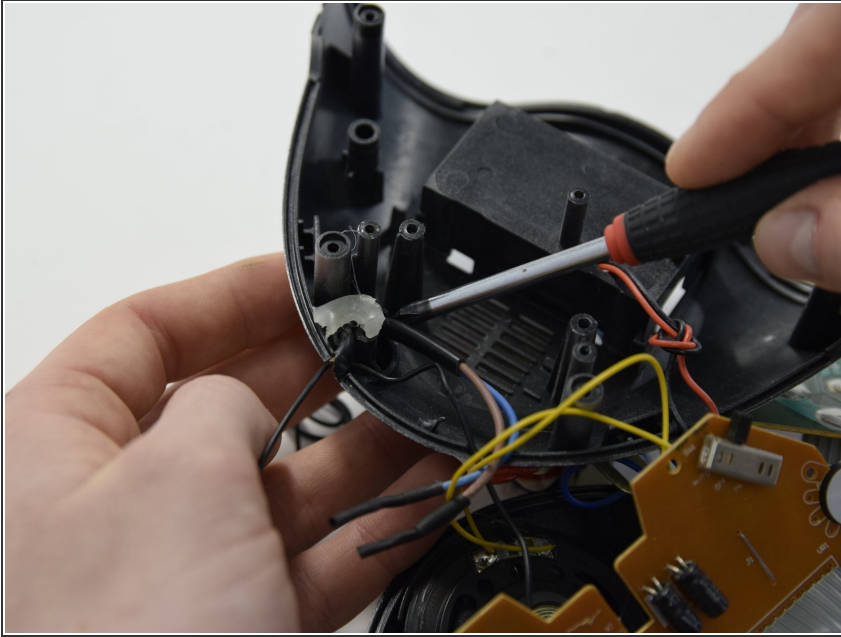
- Unscrew the cap of the POT meter.

Step 20



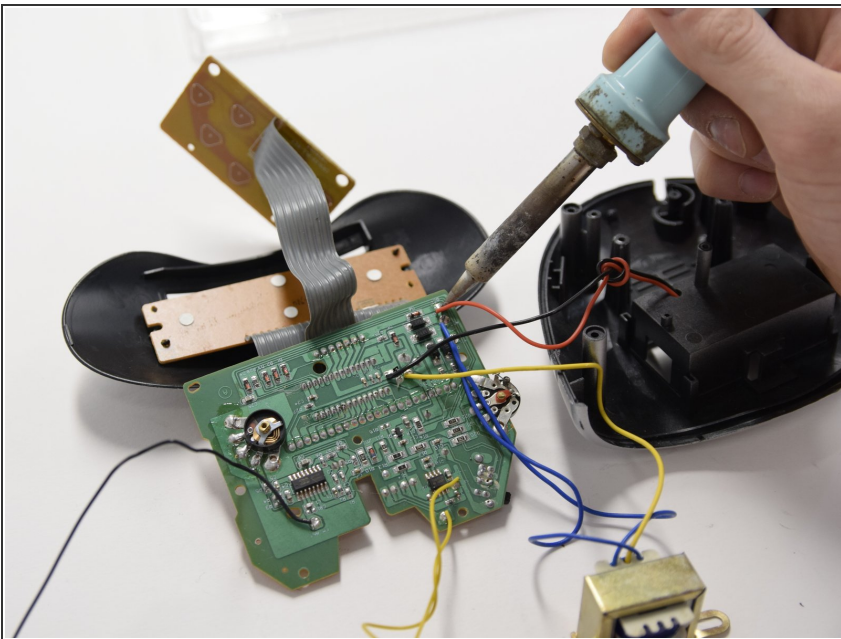
- Remove the big black double gear.

Step 21



- Remove the hot glue of the antenna.

Step 22



- Remove all the electrical components by desoldering.

To reassemble your device, follow these instructions in reverse order.