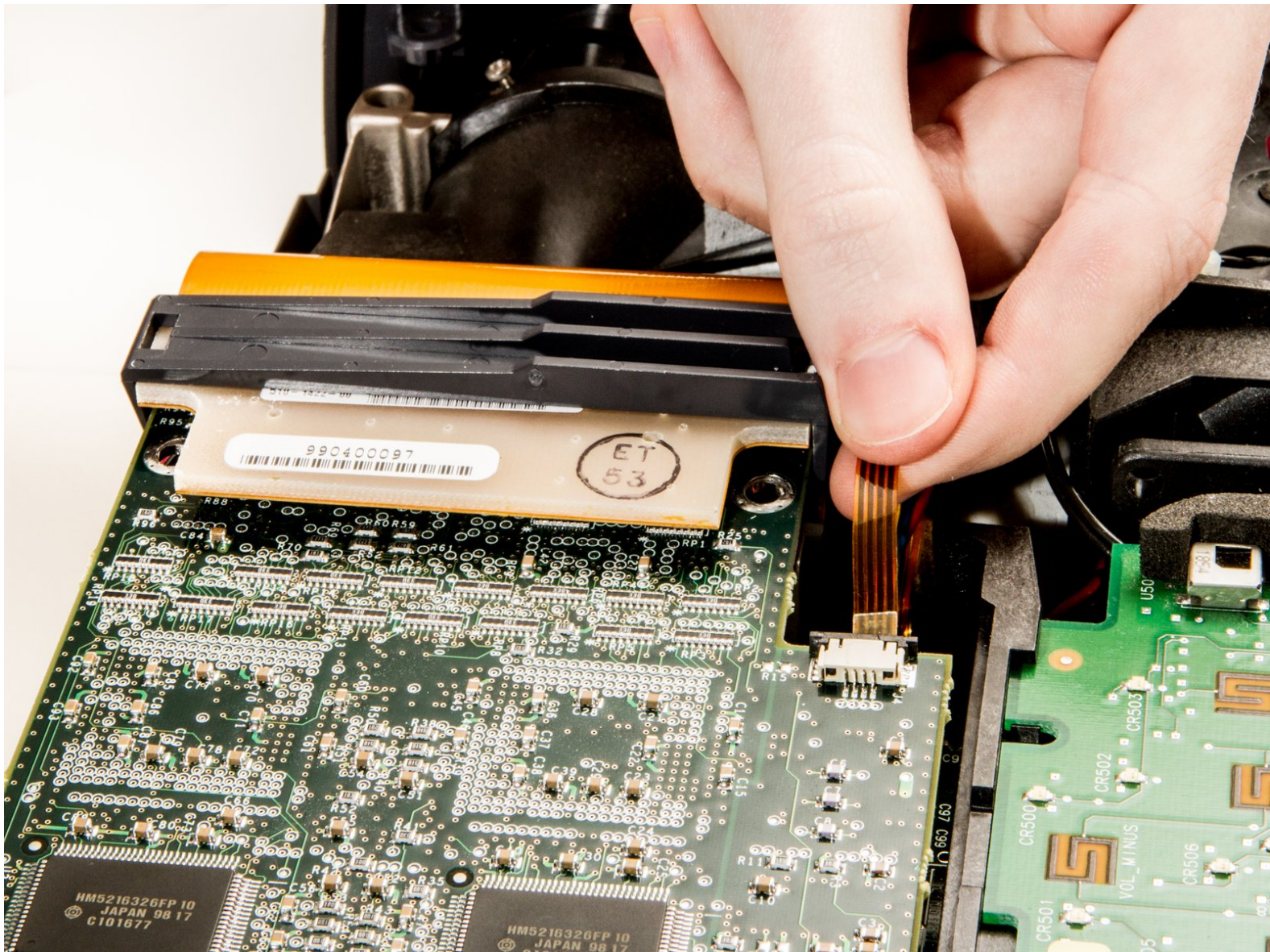




InFocus LP435Z Secondary Fan Replacement

This guide demonstrates how to replace the small, secondary fan in the front of the projector.

Written By: Andrew Kennedy



INTRODUCTION

The small, secondary fan sits just behind the vents in the grill next to the lens in the front of the projector. It draws air over the light focusing area that can get quite hot due to the lamp, and also aids in drawing more airflow into the projector for the main fan to circulate.

TOOLS:

- [Phillips #1 Screwdriver](#) (1)
 - [Phillips #2 Screwdriver](#) (1)
 - [iFixit Opening Tools](#) (2)
-

Step 1 — External Shell



- Place the projector on its back (buttons down) with the lens facing away from you.
- Remove the two 84mm screws in the upper left and right corners of the projector using the Phillips #2 screwdriver.
- Remove the remaining three 8.5mm screws using the Phillips #1 screwdriver.

Step 2



- Use the plastic opening tools to push down the clips holding the lamp cover in place, and remove it.
- ⓘ There is no lamp assembly in the projector used in this guide, yours may appear different.

Step 3



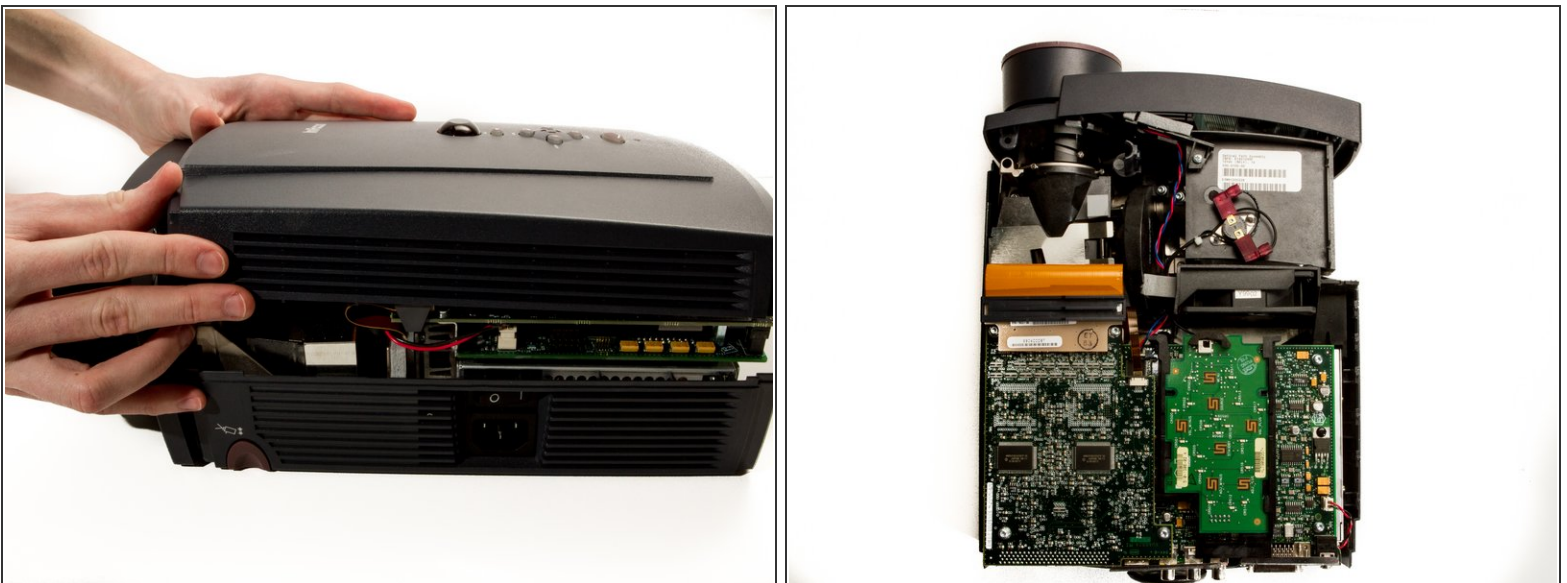
- Remove the two 8.5mm rear screws holding the rear case plate to the projector using the Phillips #1 screwdriver.
- Pull the rear plate straight off and set it aside.

Step 4



- Flip the projector over and turn around so that the lens faces you.
 - Twist the gray zoom adjustment ring clockwise and extend the lens all the way out, and then slide the zoom adjustment ring all the way towards the end of the lens as far as it will go.
 - Slide the front case plate towards the loosened zoom adjustment ring, until the top plate of the projector is freed from underneath the lip of the front case plate.
- i** The front case plate will not come all the way off due to the zoom adjustment ring obstructing it. It will merely slide forward a bit.

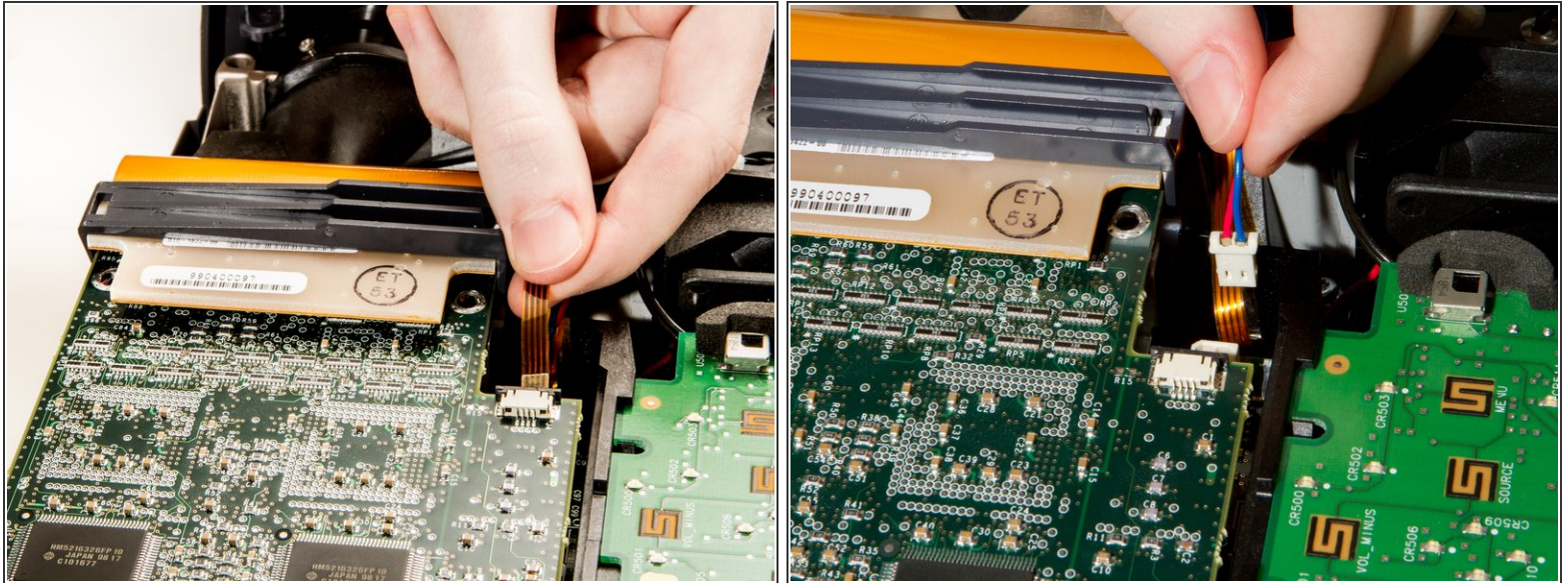
Step 5



- Lift away the top case plate and set it aside.

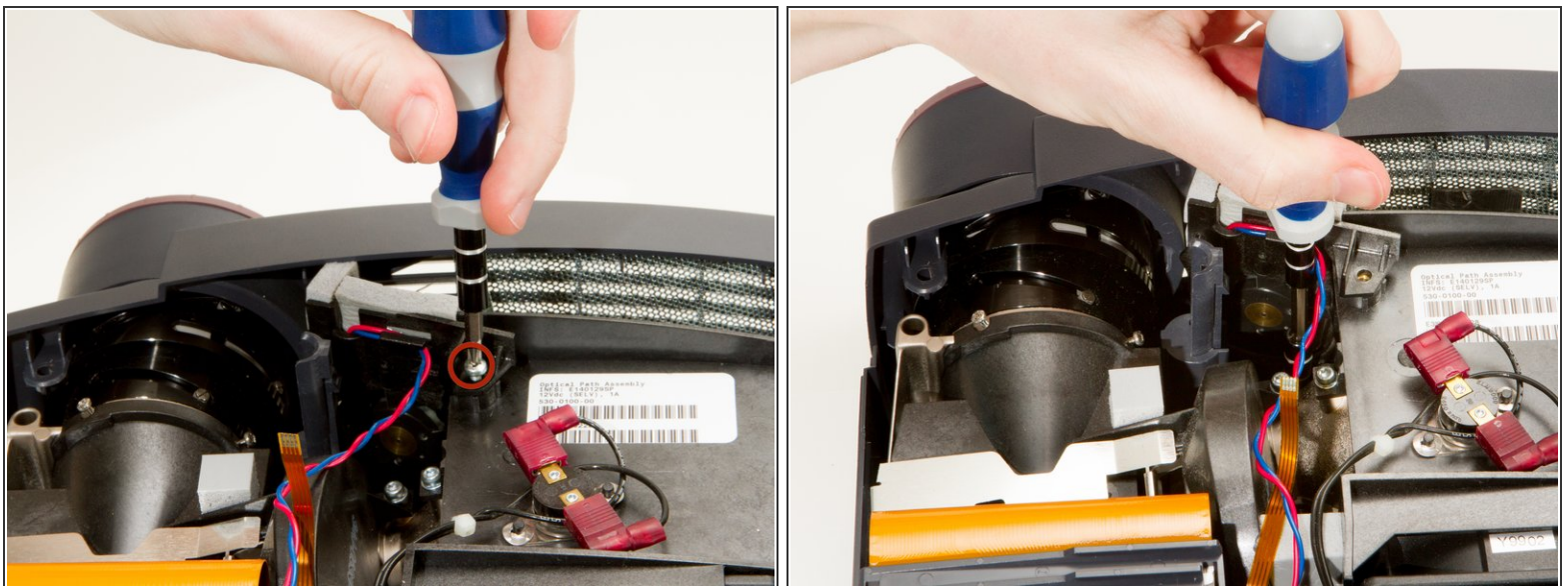
This document was generated on 2019-10-12 06:21:21 AM (MST).

Step 6 — Secondary Fan



- Unplug the small ribbon cable connecting the DLP board to the motherboard. It is obstructing the secondary fan power cable.
- Unplug the secondary fan's power cable from the motherboard.

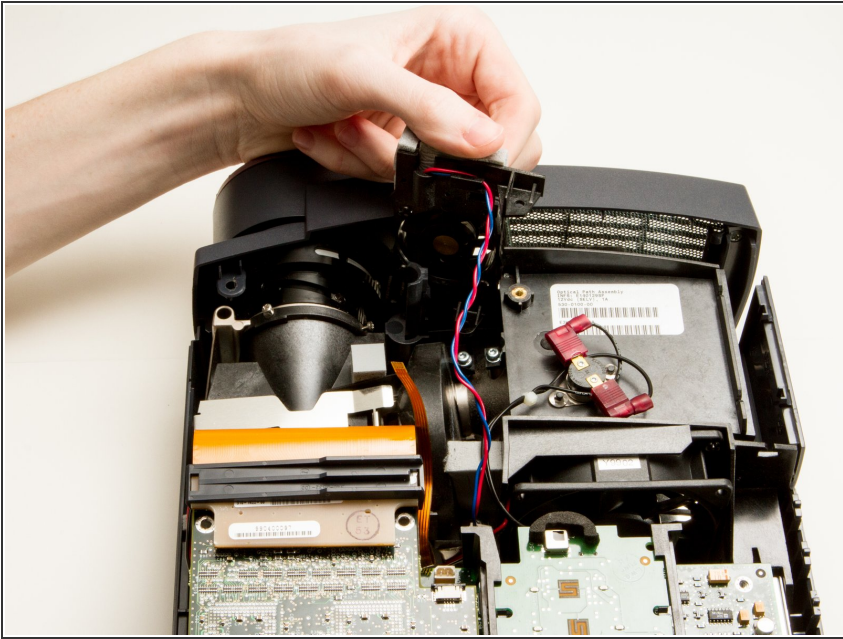
Step 7



- Remove the two Phillips #1 8.5mm screws holding the secondary fan in place.
- ⓘ The second screw is close to the bottom of the projector and may be difficult to see.

This document was generated on 2019-10-12 06:21:21 AM (MST).

Step 8



- Remove the secondary fan, by pulling straight up and out of projector.

To reassemble your device, follow these instructions in reverse order.