



InFocus LP540 Projector Lamp Replacement

This guide will assist with replacing a non-functioning projector lamp, which is responsible for providing the light necessary for projection.

Written By: Jorge L Navarro



INTRODUCTION

This guide will assist with replacing a non-functioning projector lamp, which is responsible for providing the light necessary for projection.



TOOLS:

- [Phillips #2 Screwdriver](#) (1)
 - [Flathead Screwdriver](#) (1)
-

Step 1 — Lamp



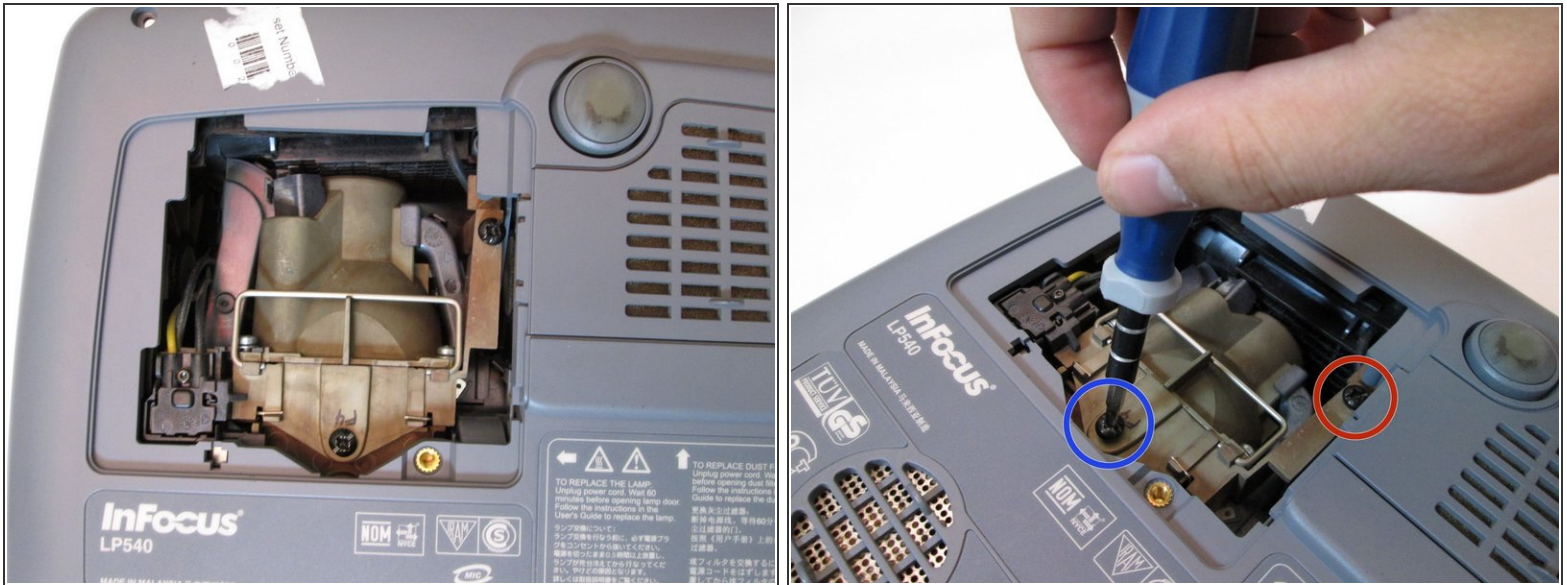
- Place the projector on its back with the control buttons facing down.
- Remove the black 7mm screw on the external case with a Phillips 2 screwdriver.

Step 2



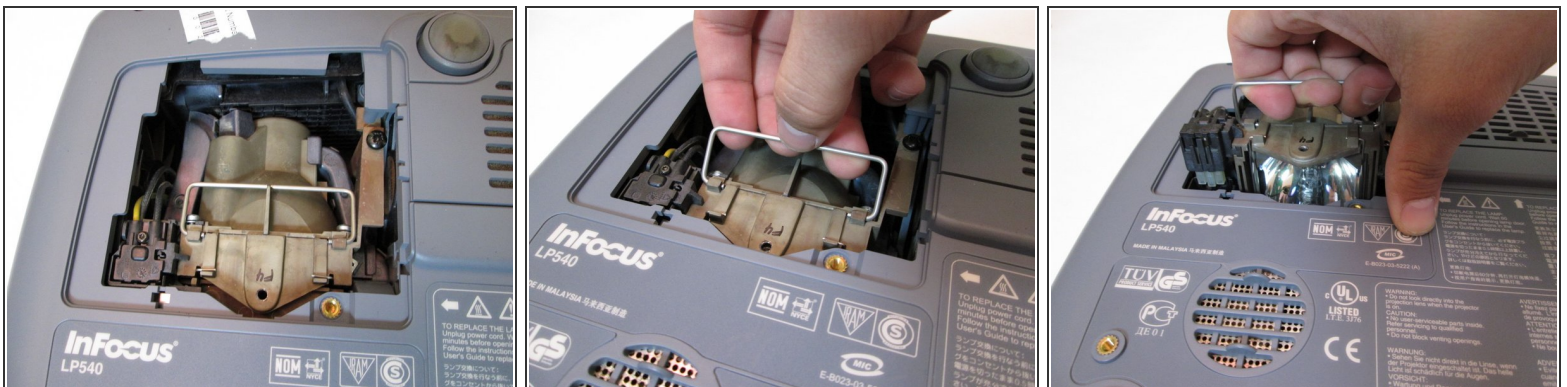
- Use the plastic flat-head to remove the lamp lid.

Step 3



- Remove the 7mm screw near the bottom center with a Philips 2 screwdriver head.
- Loosen but do not remove the 7mm screw near the upper right corner with the Phillips 2 screwdriver head.

Step 4



- Grab the silver handle.
- Unhook the handle so it can move freely.
- Pull the handle straight up until the lamp is completely removed from projector.

To reassemble your device, follow these instructions in reverse order.