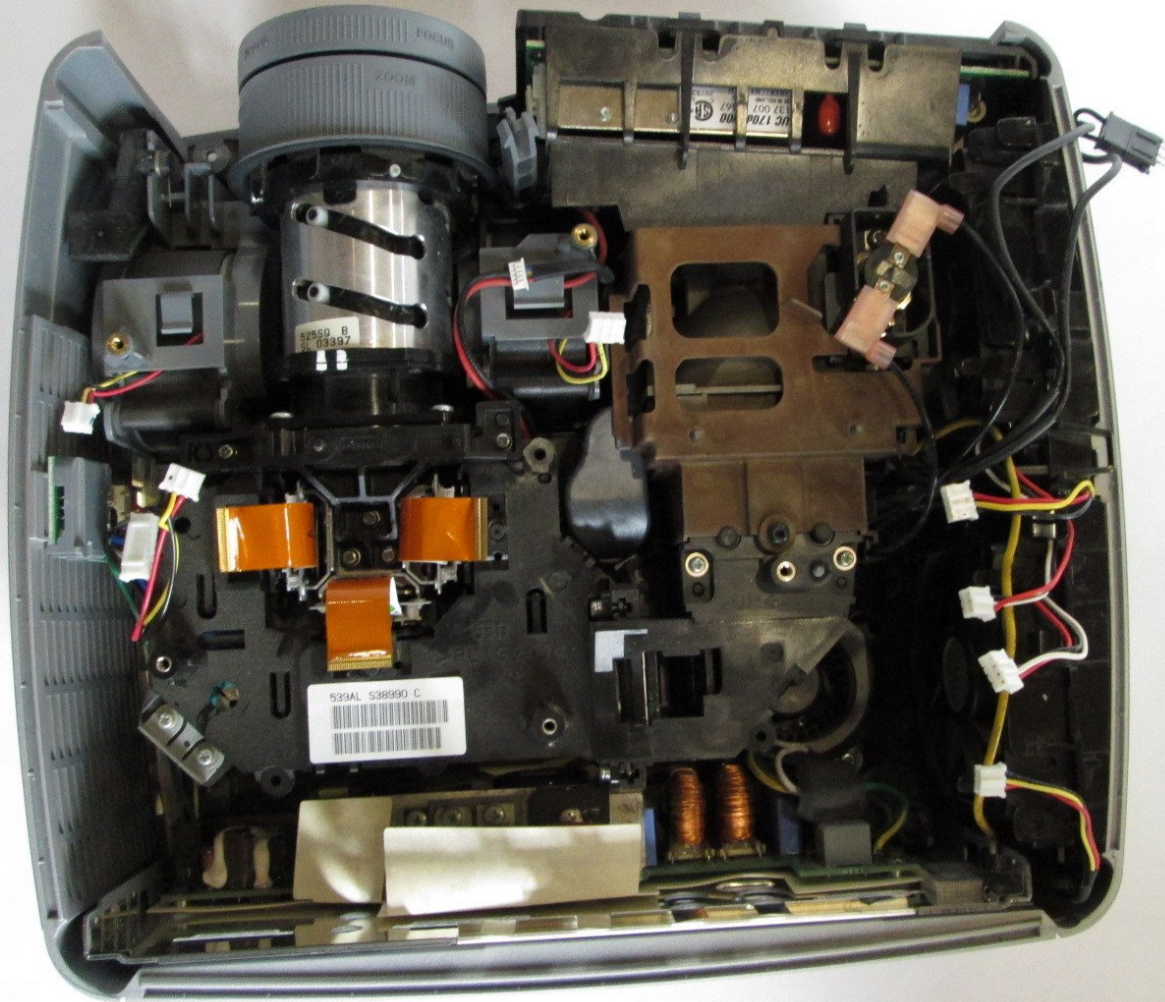




InFocus LP540 Projector Lens Replacement

This guide will show how to replace the lens of the projector. The lens is responsible for projecting the image the image that appears on the screen.

Written By: Jorge L Navarro





TOOLS:

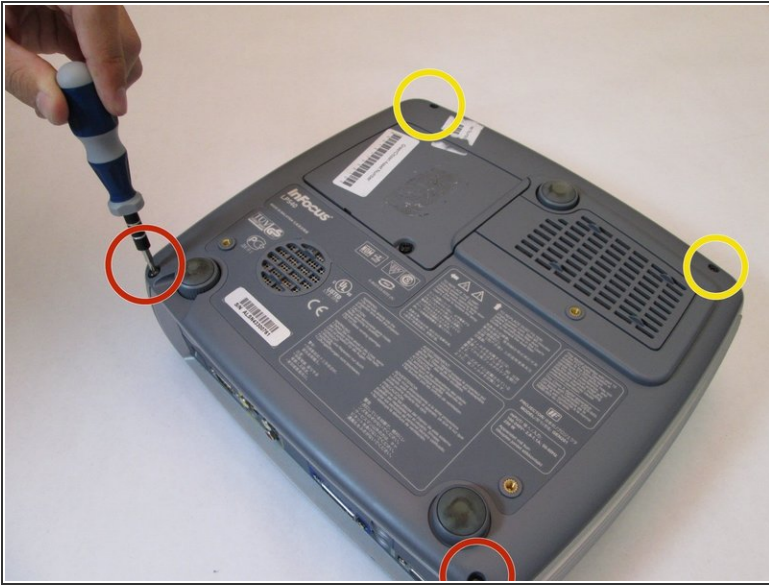
- [Phillips #0 Screwdriver](#) (1)
 - [T10 Torx Screwdriver](#) (1)
-

Step 1 — Main Board



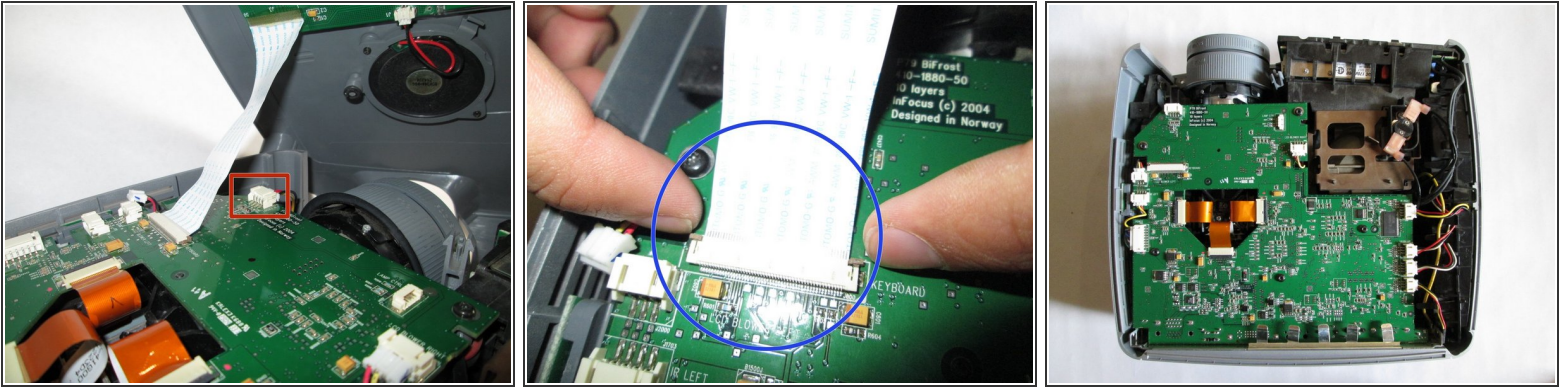
- Flip the projector right-side up and turn it so that the back ports are facing you.
- Remove the 7mm metallic hex screws using the flat-head screwdriver.
- Remove the two black 10mm screws using the T10 Torx screwdriver head. The screws are located at the center of the back panel.

Step 2



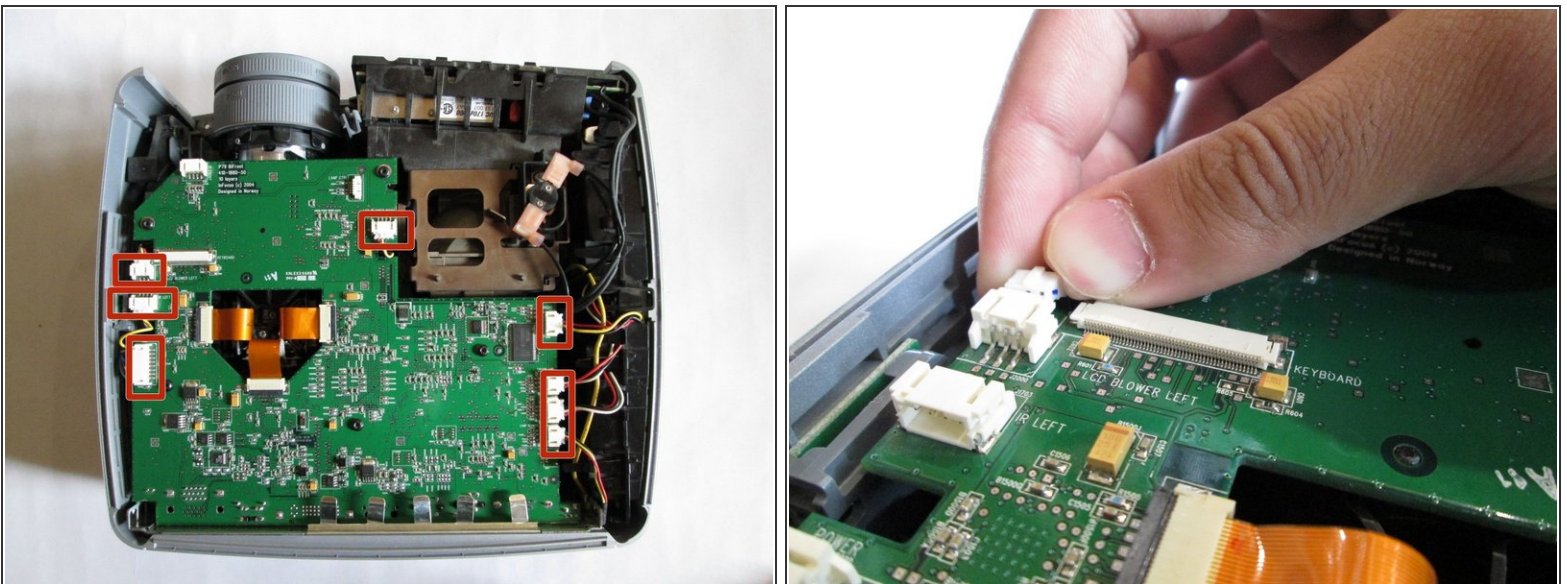
- Flip the projector over.
 - Remove the two 77mm screws that are located nearest to the back panel ports. Use the T10 Torx screwdriver head.
 - Next, remove the two 10mm screws located near the lens side with the T10 Torx screwdriver head.
 - Flip the projector back over.
- ⚠ Lift up the main lid cautiously to avoid ripping the electrical ribbons.

Step 3



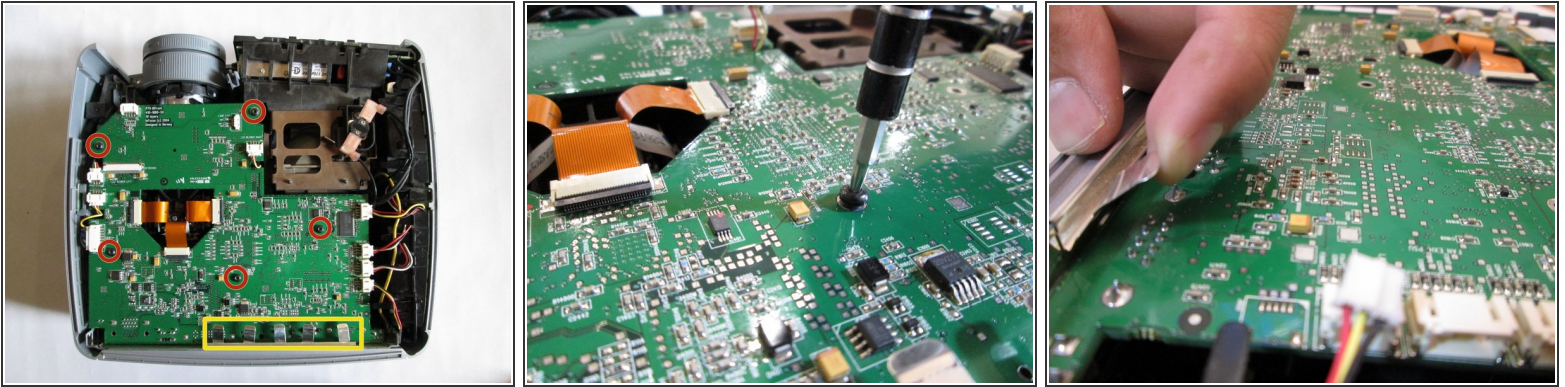
- Unplug the speaker wire from the circuit board by simultaneously squeezing the sides and pulling.
- Pull on the brown tabs located at the sides of the white plastic ribbon holder and pull the ribbon out.
- Pull the top cover back.

Step 4



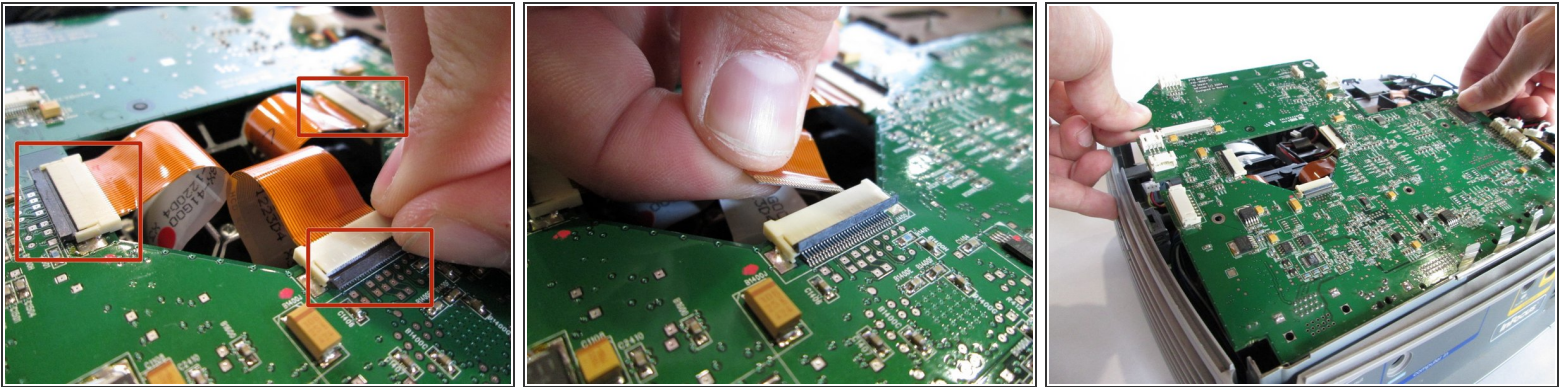
- Remove the cables from the white tabs.

Step 5



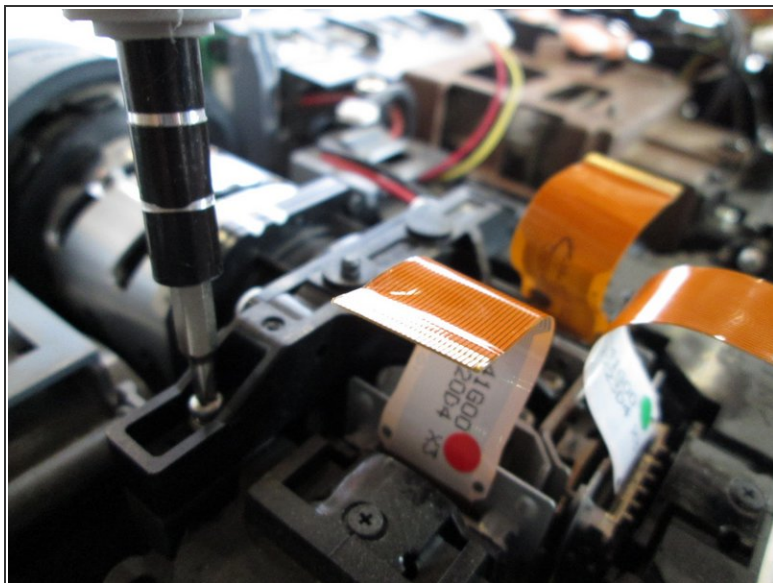
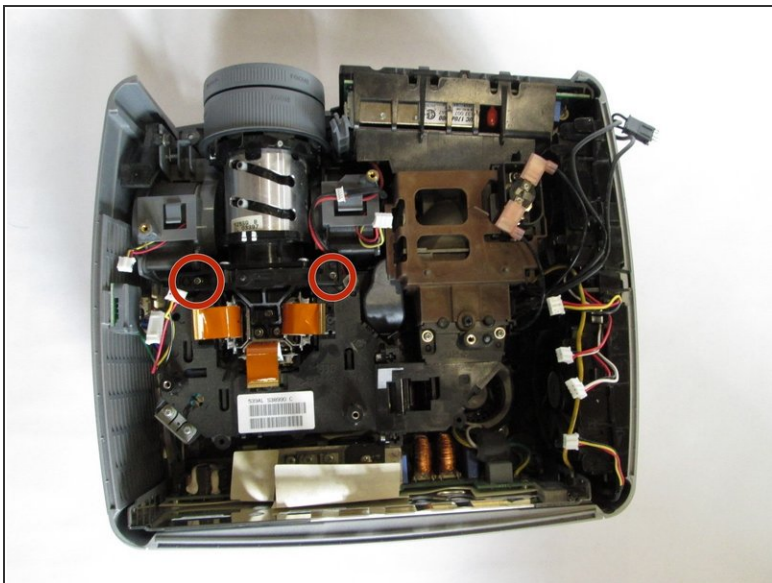
- Remove the five 5mm screws located throughout the motherboard with the screwdriver. Use the T10 Torx screwdriver head.
 - Pull up on each metal tab located at the rear of the projector. There are 5 tabs.
- ⚠ Do not pull up on the metal tabs too hard or too fast because they can break easily.

Step 6



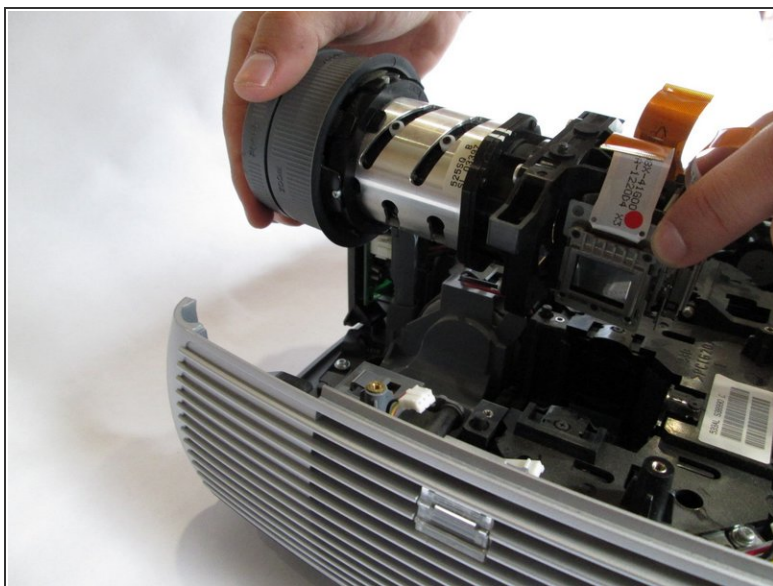
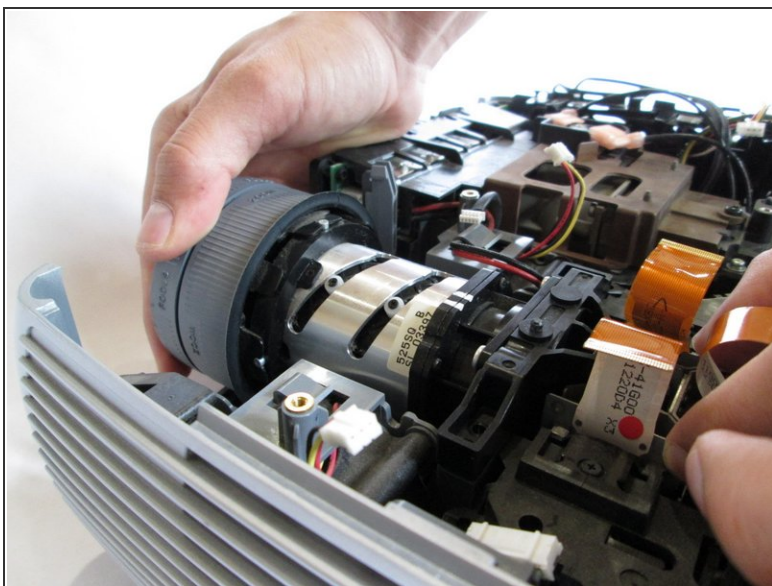
- Remove the three gold ribbons by flipping up the black taps that hold the ribbon in place.
- Pull the ribbons out carefully and place them under the main board.
- Carefully lift the entire main board up.

Step 7 — Lens



- Remove the two 10 mm screws using the Philips 0 screwdriver head.

Step 8



- ⓘ Carefully hold the lens from both ends and lift up simultaneously

To reassemble your device, follow these instructions in reverse order.