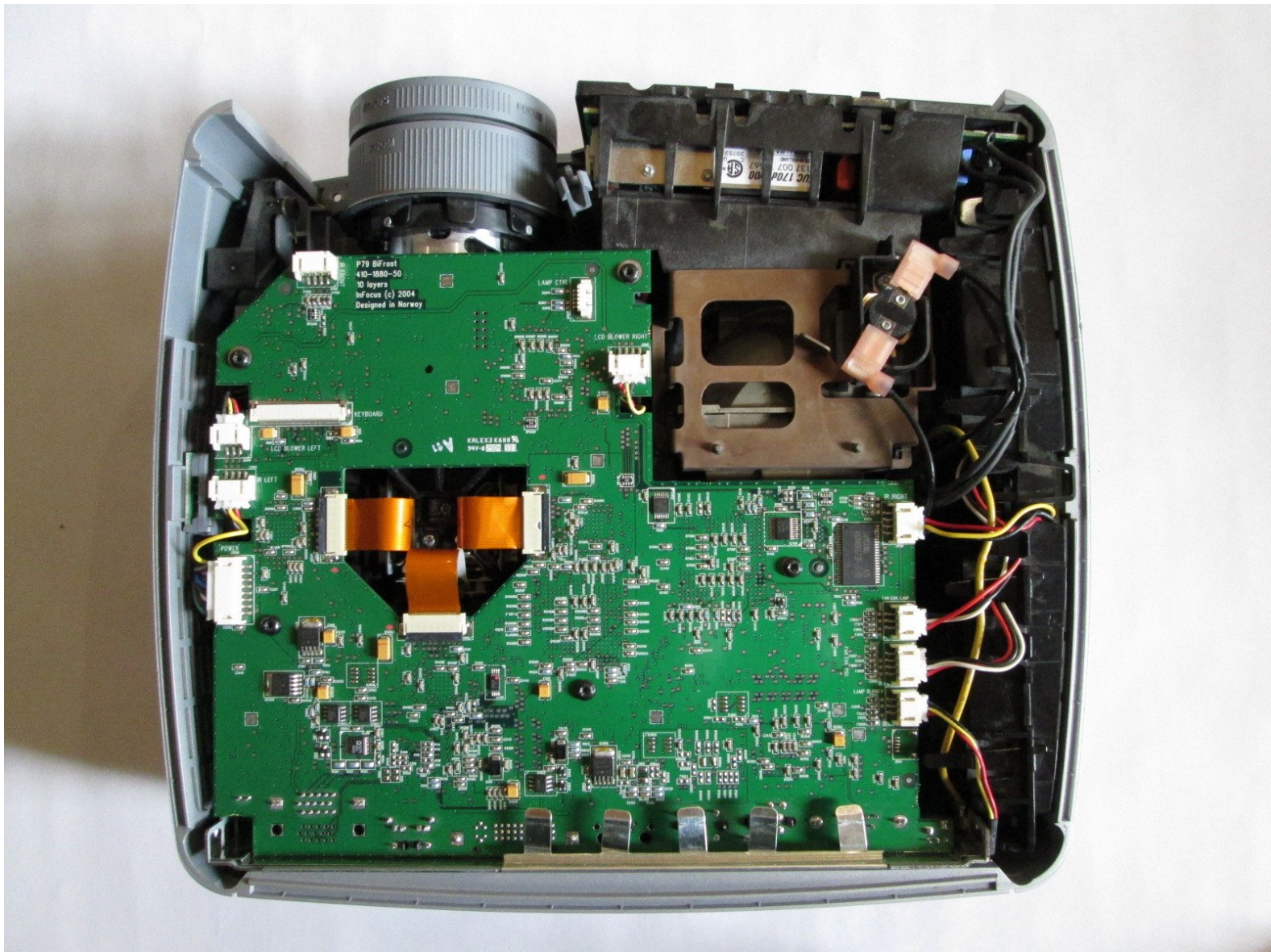




InFocus LP540 Projector Main Board Replacement

Written By: Jorge L Navarro





TOOLS:

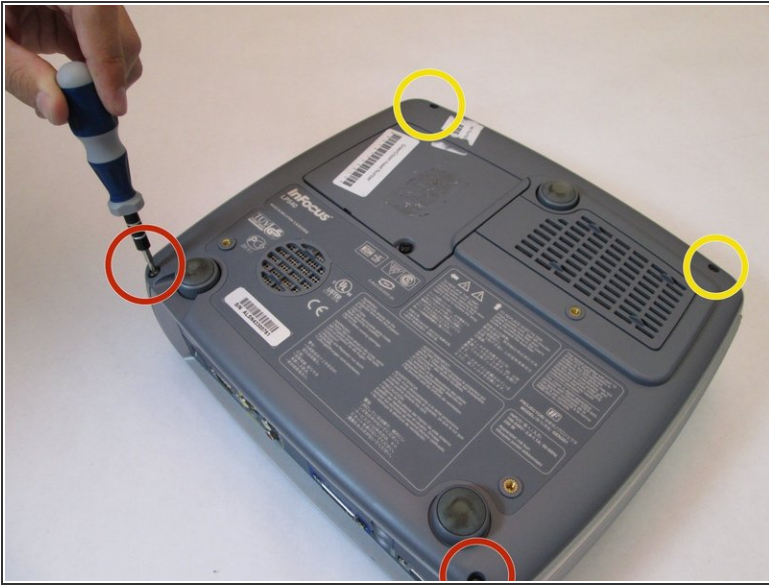
- [Flathead Screwdriver](#) (1)
 - [T10 Torx Screwdriver](#) (1)
 - [Phillips #0 Screwdriver](#) (1)
-

Step 1 — Main Board



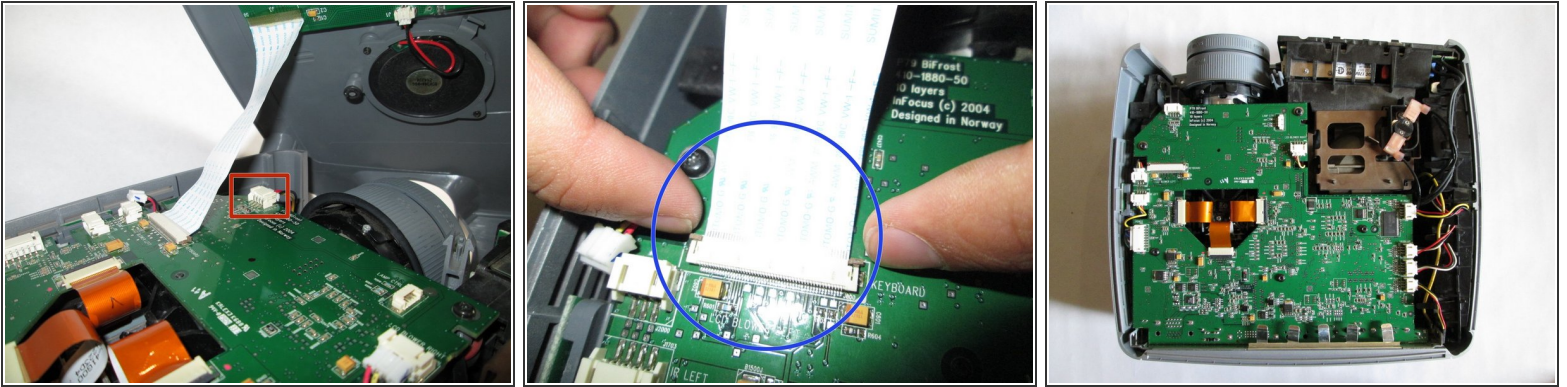
- Flip the projector right-side up and turn it so that the back ports are facing you.
- Remove the 7mm metallic hex screws using the flat-head screwdriver.
- Remove the two black 10mm screws using the T10 Torx screwdriver head. The screws are located at the center of the back panel.

Step 2



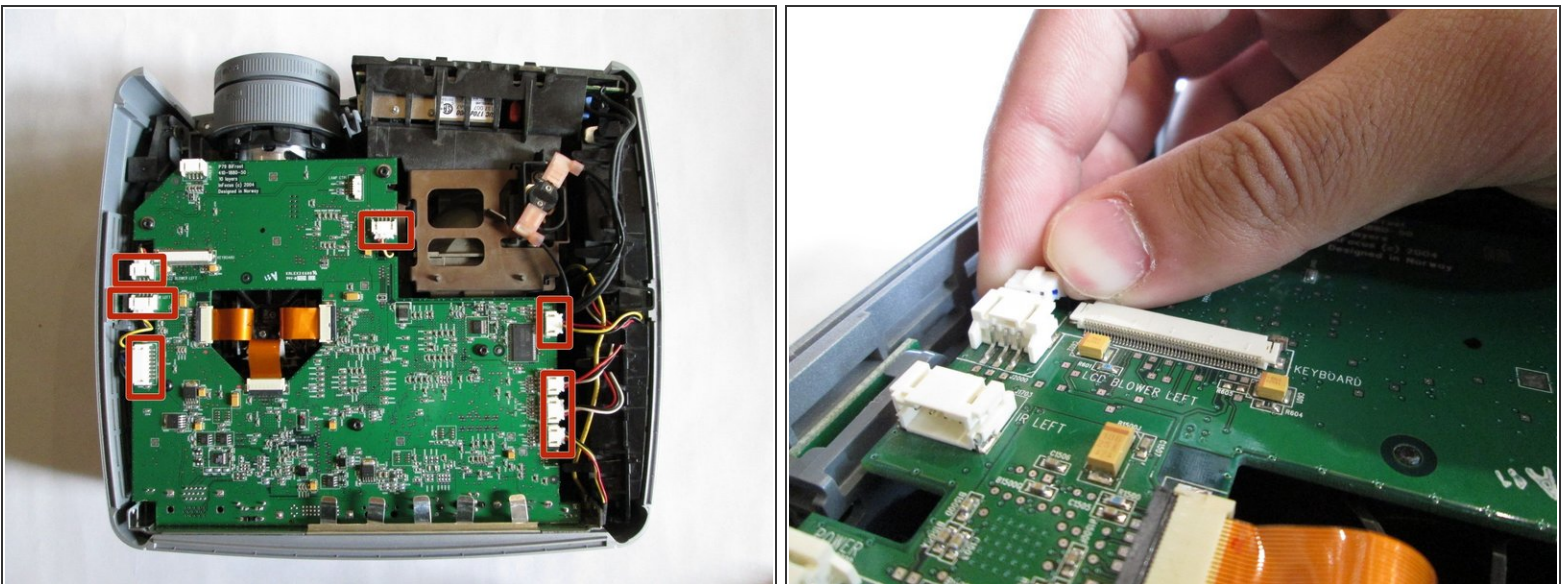
- Flip the projector over.
 - Remove the two 77mm screws that are located nearest to the back panel ports. Use the T10 Torx screwdriver head.
 - Next, remove the two 10mm screws located near the lens side with the T10 Torx screwdriver head.
 - Flip the projector back over.
- ⚠ Lift up the main lid cautiously to avoid ripping the electrical ribbons.

Step 3



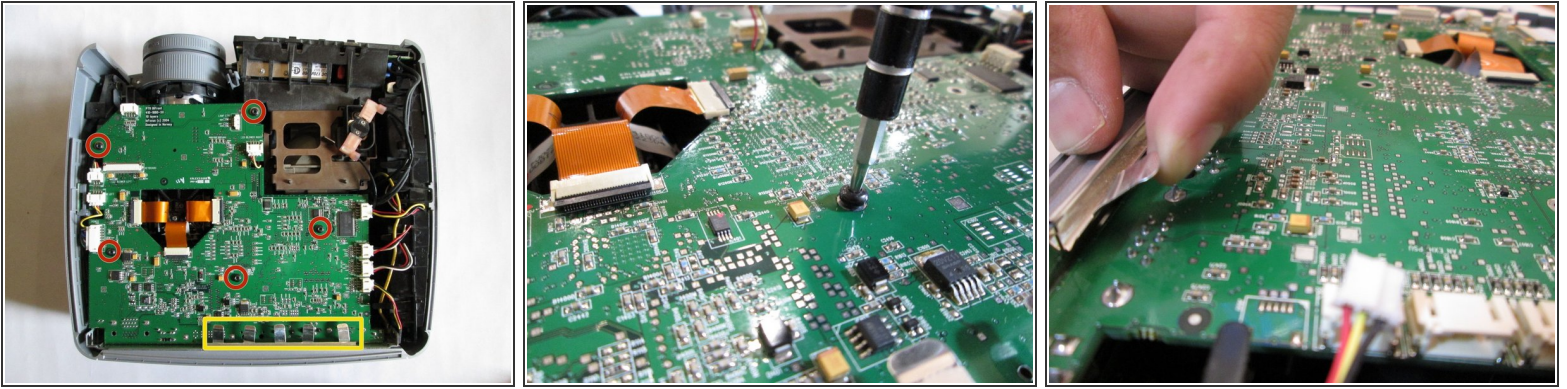
- Unplug the speaker wire from the circuit board by simultaneously squeezing the sides and pulling.
- Pull on the brown tabs located at the sides of the white plastic ribbon holder and pull the ribbon out.
- Pull the top cover back.

Step 4



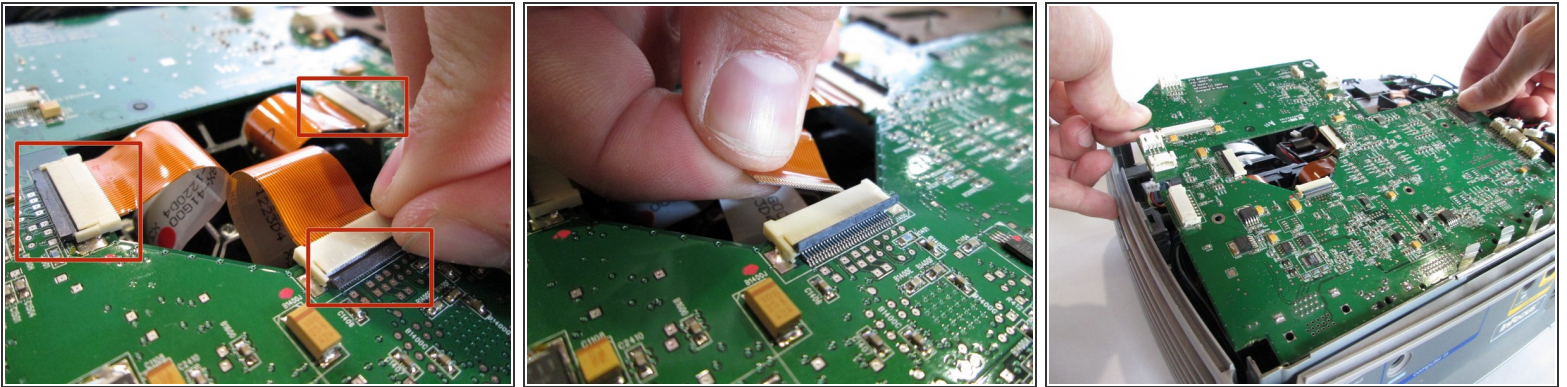
- Remove the cables from the white tabs.

Step 5



- Remove the five 5mm screws located throughout the motherboard with the screwdriver. Use the T10 Torx screwdriver head.
 - Pull up on each metal tab located at the rear of the projector. There are 5 tabs.
- ⚠ Do not pull up on the metal tabs too hard or too fast because they can break easily.

Step 6



- Remove the three gold ribbons by flipping up the black taps that hold the ribbon in place.
- Pull the ribbons out carefully and place them under the main board.
- Carefully lift the entire main board up.

To reassemble your device, follow these instructions in reverse order.