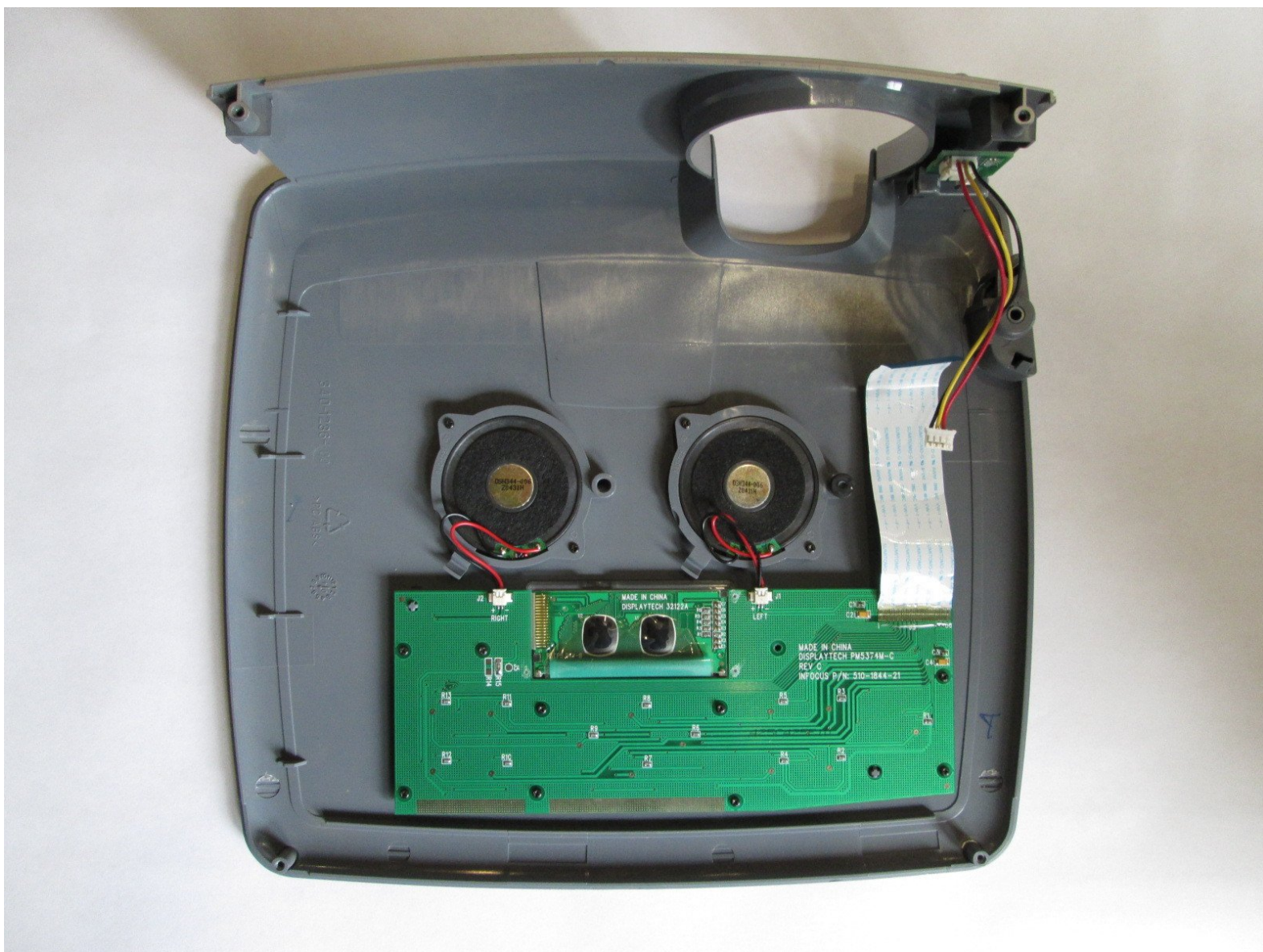




# InFocus LP540 Projector Speakers Replacement

This guide will demonstrate the replacement of faulty speakers, which provide the audio of the projected images or videos.

Written By: Jorge L Navarro



This document was generated on 2019-09-16 03:00:27 PM (MST).



## TOOLS:

- [T10 Torx Screwdriver](#) (1)
- [Phillips #0 Screwdriver](#) (1)
- [Flathead Screwdriver](#) (1)

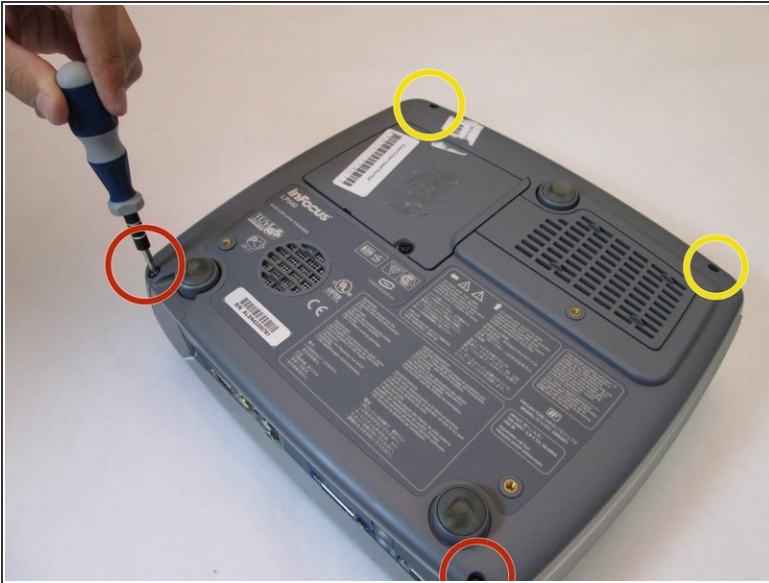
## Step 1 — Speakers



- Flip the projector right-side up and turn it so that the back ports are facing you.
- Remove the 7mm metallic hex screws using the flat-head screwdriver
- Remove the two black 10mm screws using the T10 Torx screwdriver head. The screws are located at the center of the back panel.

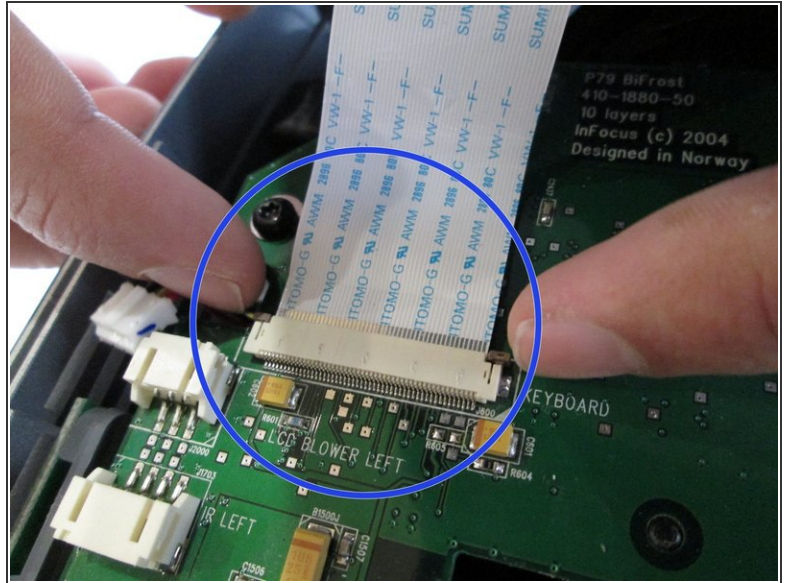
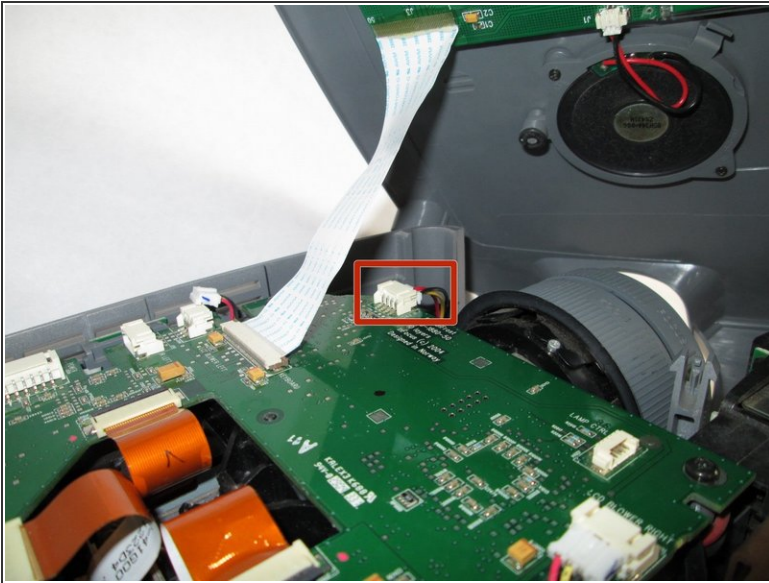


## Step 2



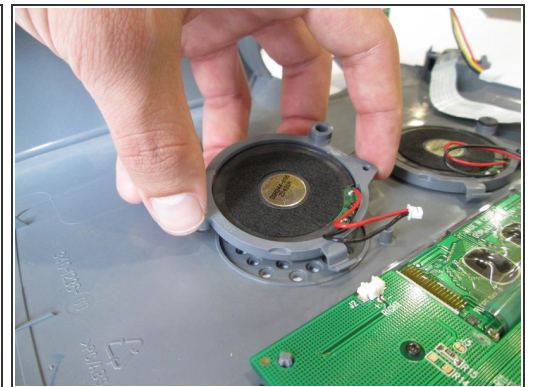
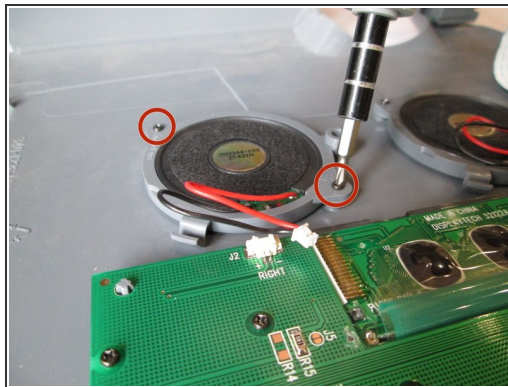
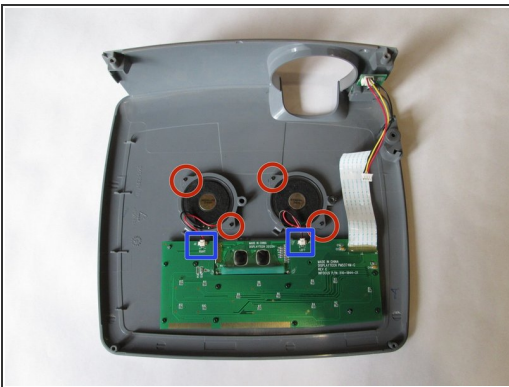
- Remove the two 77mm screws that are located nearest to the back panel ports. Use the T10 Torx screwdriver head.
  - Next, remove the two 10mm screws located near the lens side with the T10 Torx screwdriver head.
  - Flip the projector back over.
- ⚠ Then proceed to lifting up the main lid cautiously to avoid ripping the electrical strips.

## Step 3



- Unplug the speaker wire from the circuit board by simultaneously squeezing the sides and pulling.
- Pull on the brown tabs located at the sides of the white plastic ribbon holder and pull the ribbon out.

## Step 4



- Place the top shell of the projector down.
- Remove the speaker wires from the white tabs.
- Use the Phillips 0 screwdriver to remove the four 5.5 mm screws.
- Carefully lift the speakers to remove them.

To reassemble your device, follow these instructions in reverse order.