



InFocus Screenplay 4805 Bulb Replacement

If you are experiencing no image portrayed by the projector, then replacing the bulb may be the solution.

Written By: Marilyn Urness



INTRODUCTION

This guide shows how to replace the projector's bulb if you are experiencing no image being betrayed by the projector. You will need a replacement bulb and an iFixit tool kit.



TOOLS:

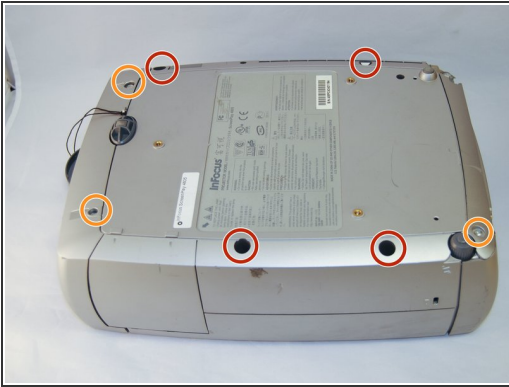
- [Metal Spudger](#) (1)
- [Phillips #0 Screwdriver](#) (1)
- [Phillips #1 Screwdriver](#) (1)
- [Phillips #2 Screwdriver](#) (1)
- [Flathead Screwdriver](#) (1)



PARTS:

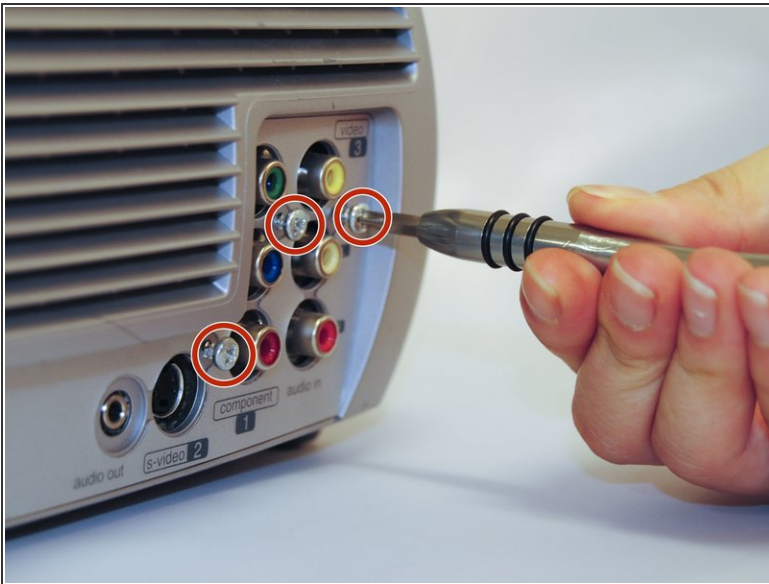
- [Replacement bulb](#) (1)

Step 1 — Top Panel



- Flip the projector on its back.
- Use the Phillips #2 screwdriver to remove the (4) four 2 cm gold screws.
- Use the Phillips #2 screwdriver to remove the (3) three 1 cm silver screws.

Step 2



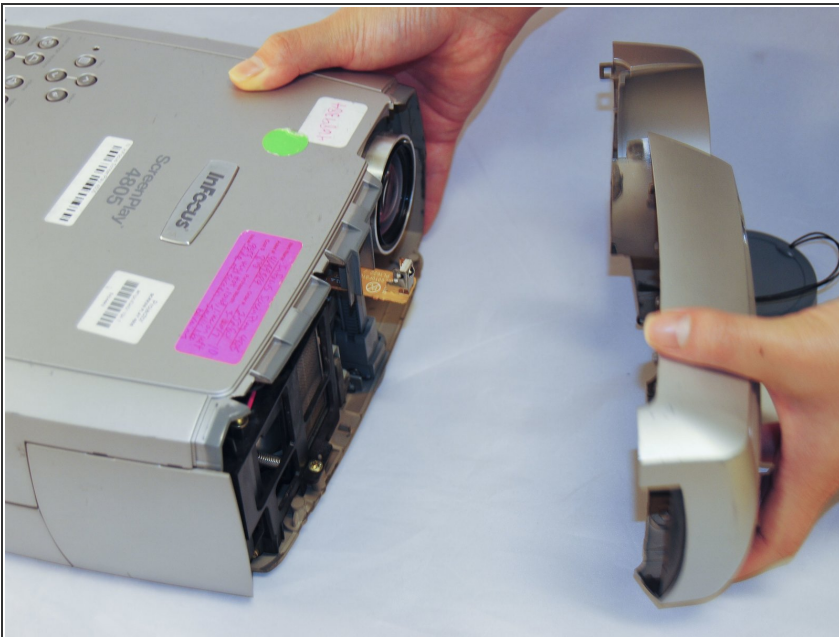
- Turn the projector, facing the back cable board towards you.
- Using the Phillips #0 screwdriver, remove the (3) three 1.0 cm silver screws on the back panel.
- Gently take off back cable panel.

Step 3



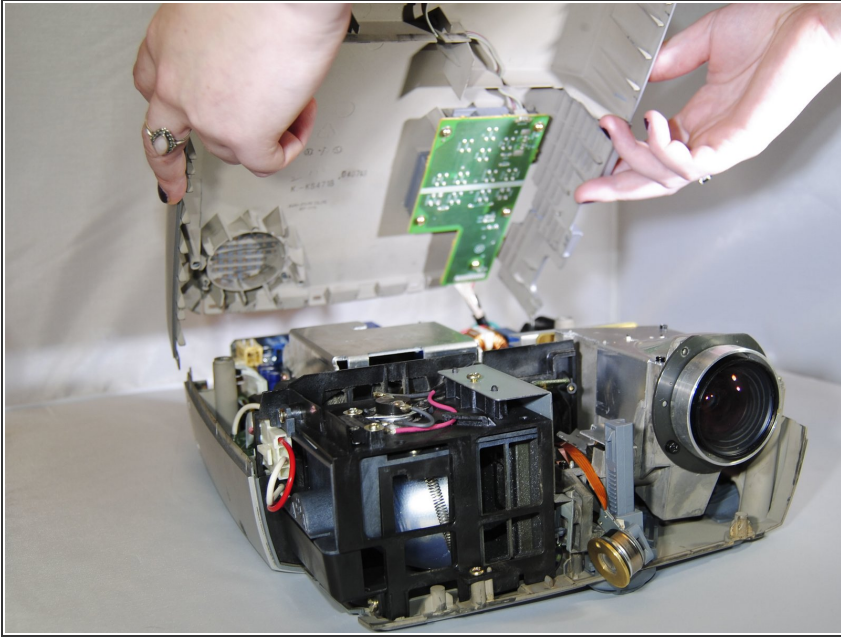
- Turn the projector so the front side with the lens is facing you.
- Gently pry the both of the grey lens rings using the metal spudger.

Step 4



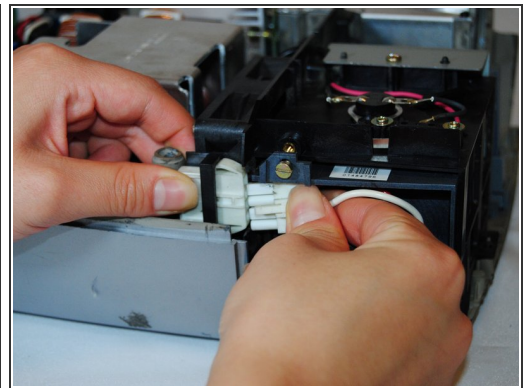
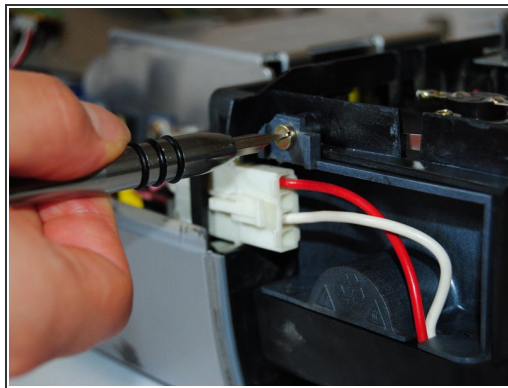
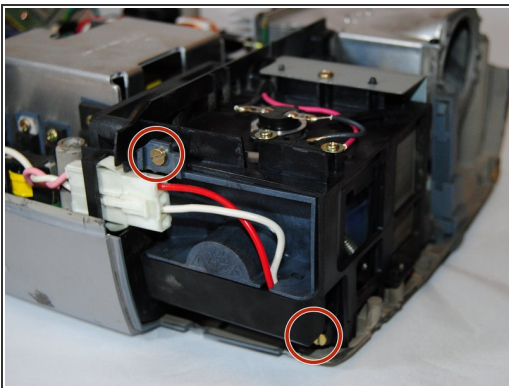
- Now that the screws have been removed, proceed with the removal of the outer panel.
- Gently remove the front lens panel.
- ⓘ Be forewarned, the panel will resist. Be careful not to break the lens.

Step 5



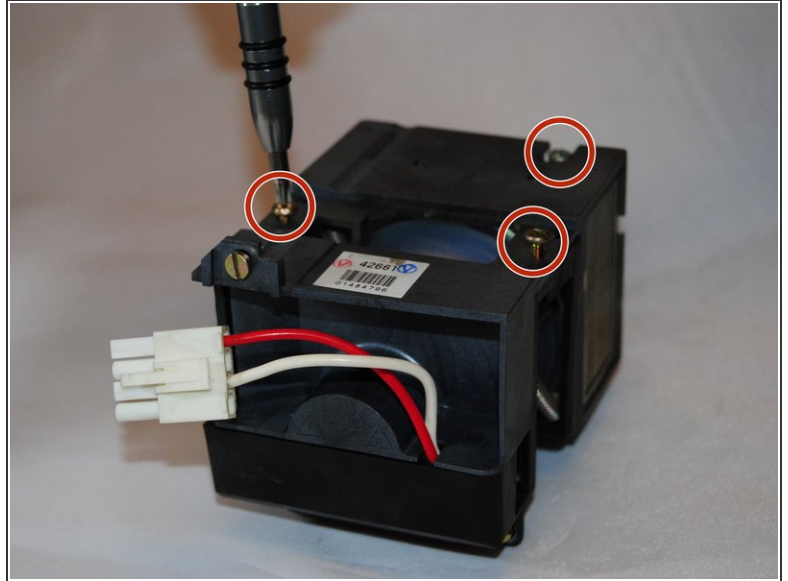
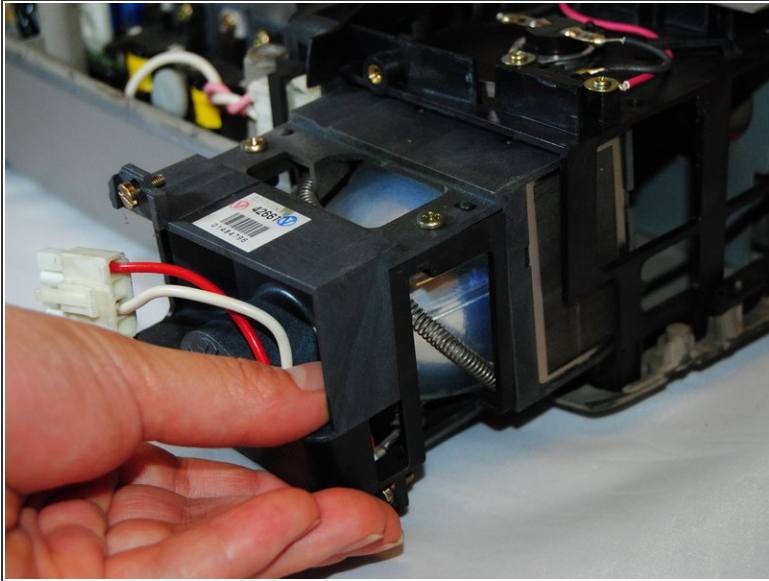
- Being careful not to pull the wires inside the projector, gently lift the top panel off the projector.
- ❗ Rest the lid behind the projector so the insides are exposed and undamaged.

Step 6 — Bulb



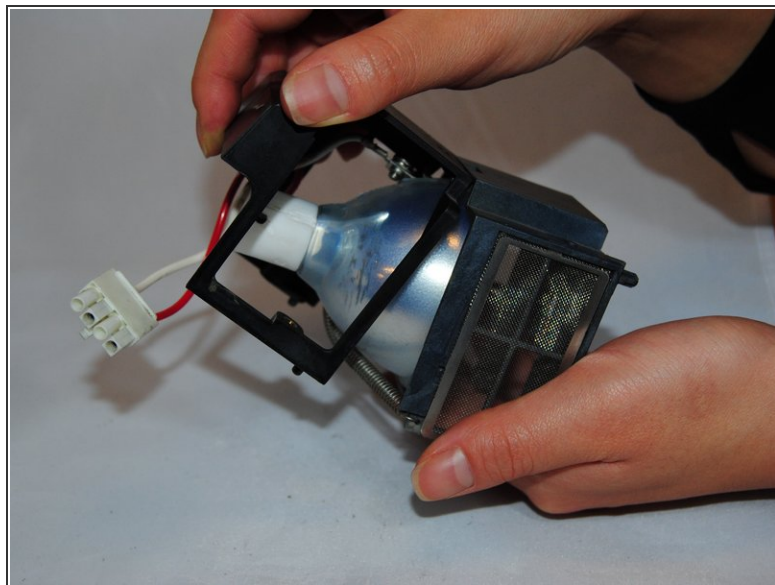
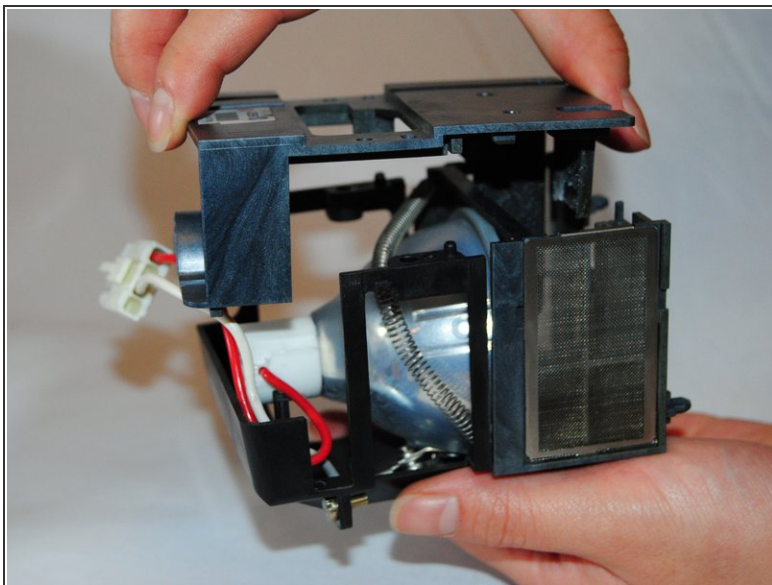
- Remove the two gold 1 cm screws and washers on the side of lens housing using the 4.0 flat-head bit
- Pinch the white wire tab to gently detach the side that connects with the lens housing.

Step 7



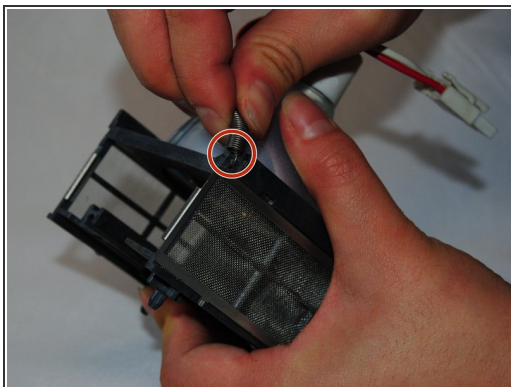
- Slide the bulb housing out of the projector.
- Use the Phillips #1 screwdriver to remove the three 1 cm gold screws on the bulb housing.

Step 8



- Gently pull the top of the bulb housing off.
 - Lift up the middle of the bulb housing to remove it.
- ⚠ Be careful of loose parts, such as the metal housing and the glass focusing lens.

Step 9



- Unhook the spring from the bulb housing.
- Gently remove the bulb.

To reassemble the device, follow these instructions in reverse order.

