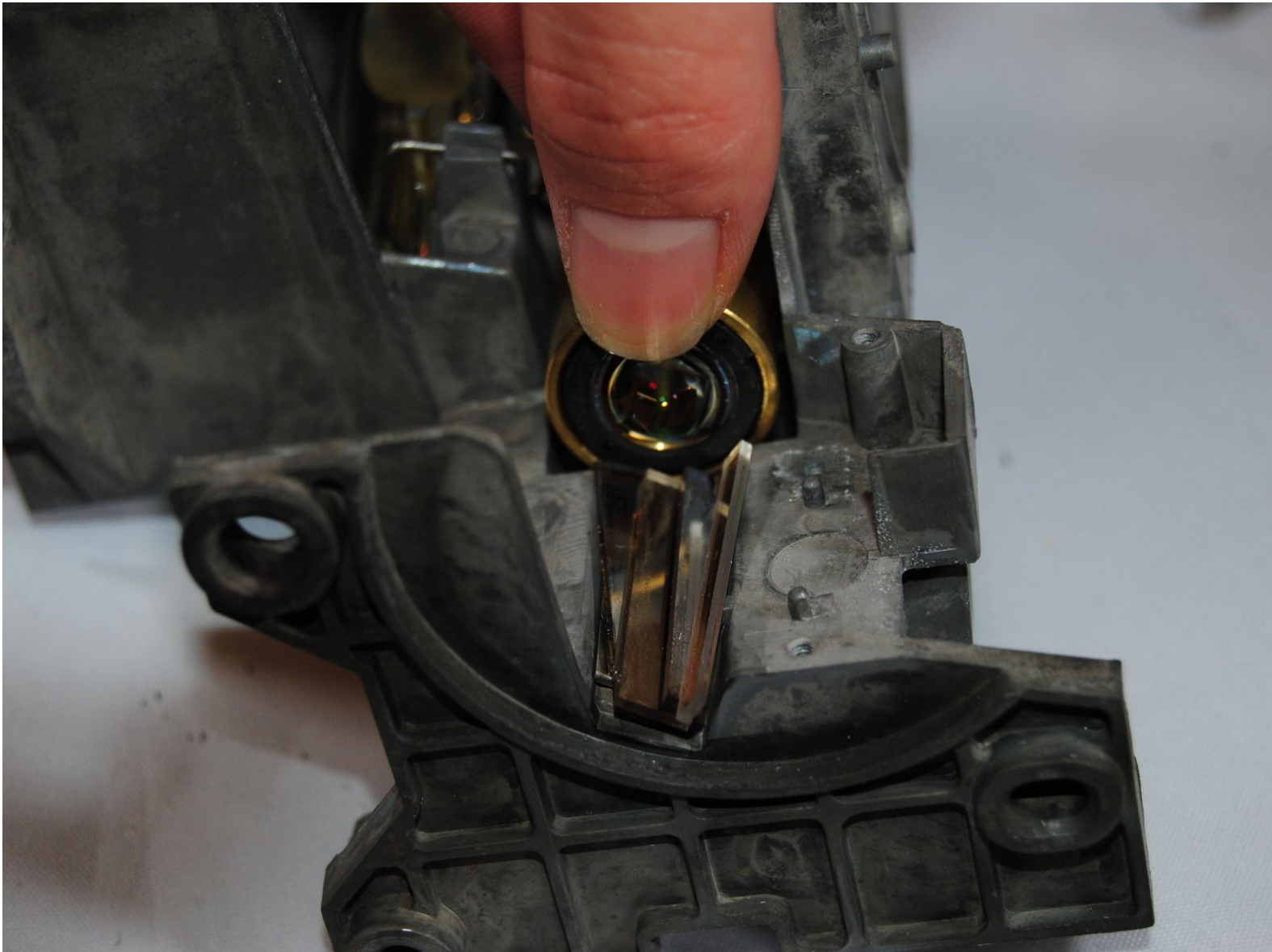




# InFocus Screenplay 4805 Light Tunnel Replacement

Replace the light tunnel if experiencing dark bands across or on the edges of the screen.

Written By: Marilyn Urness



## INTRODUCTION

Replace the light tunnel if experiencing dark bands across or on the edges of the screen.

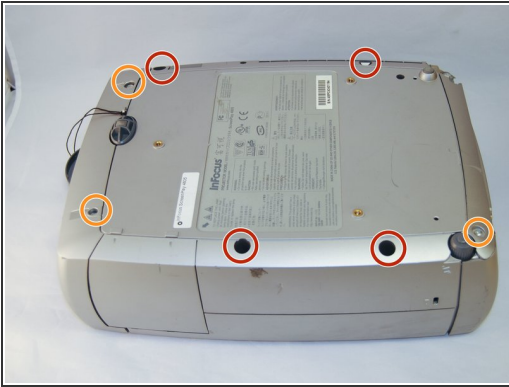
For this project you'll need a can of compressed air to clean the inside if it's dirty. You'll also need a Torx screwdriver and a metal spudger.



### TOOLS:

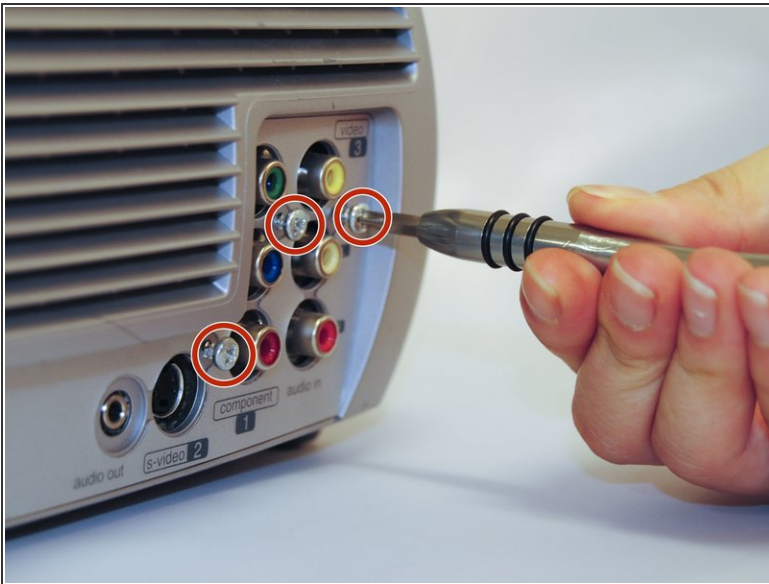
- [Metal Spudger](#) (1)
  - [Standard, bent-bar style 2mm Hex driver.](#) (1)
  - [Phillips #0 Screwdriver](#) (1)
  - [Phillips #1 Screwdriver](#) (1)
  - [Phillips #2 Screwdriver](#) (1)
  - [JIS #0 Screwdriver](#) (1)
-

## Step 1 — Top Panel



- Flip the projector on its back.
- Use the Phillips #2 screwdriver to remove the (4) four 2 cm gold screws.
- Use the Phillips #2 screwdriver to remove the (3) three 1 cm silver screws.

## Step 2



- Turn the projector, facing the back cable board towards you.
- Using the Phillips #0 screwdriver, remove the (3) three 1.0 cm silver screws on the back panel.
- Gently take off back cable panel.

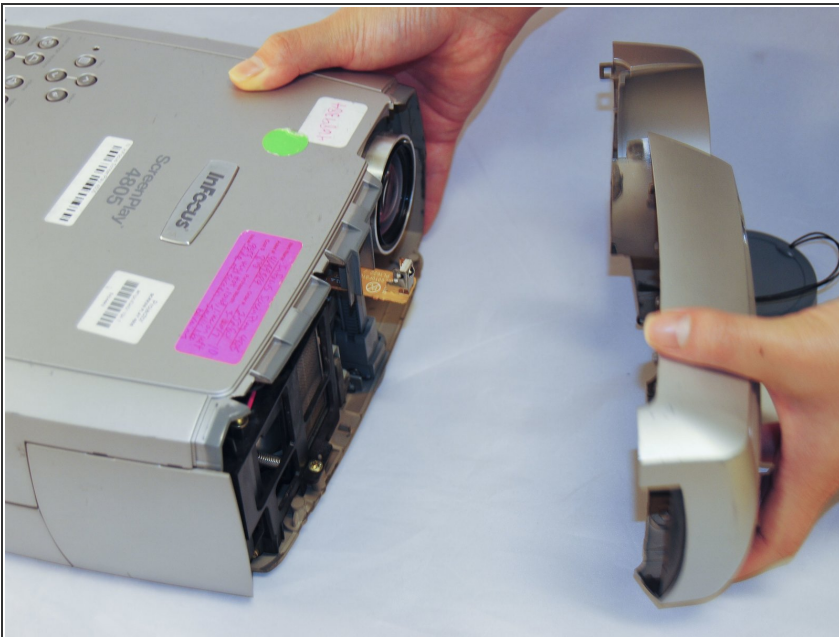


## Step 3



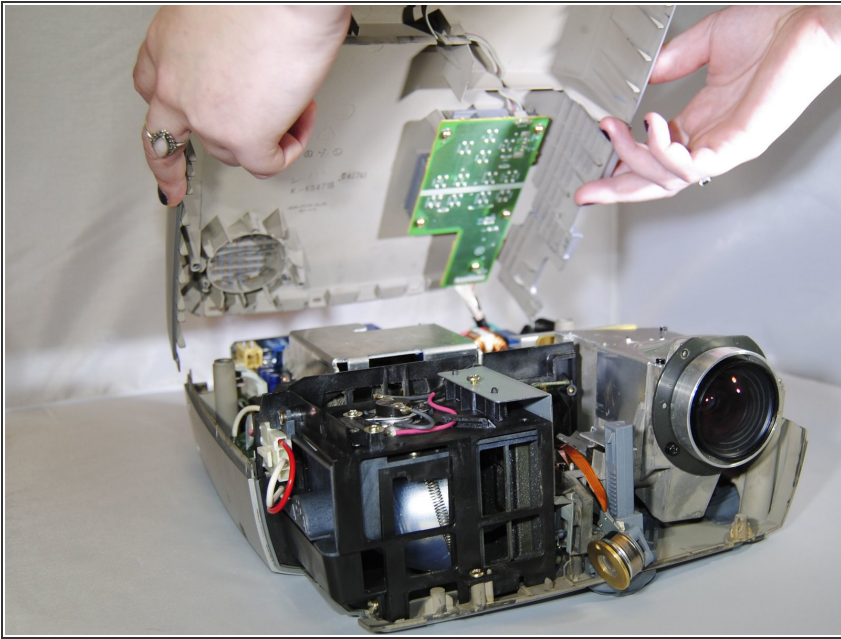
- Turn the projector so the front side with the lens is facing you.
- Gently pry the both of the grey lens rings using the metal spudger.

## Step 4



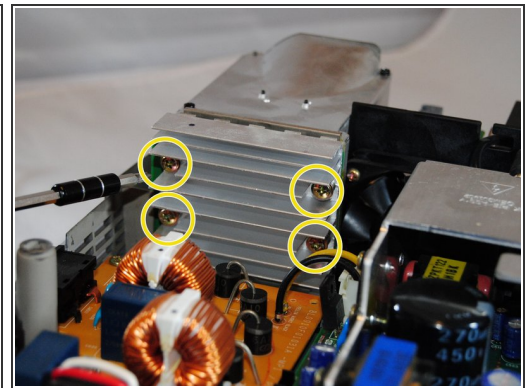
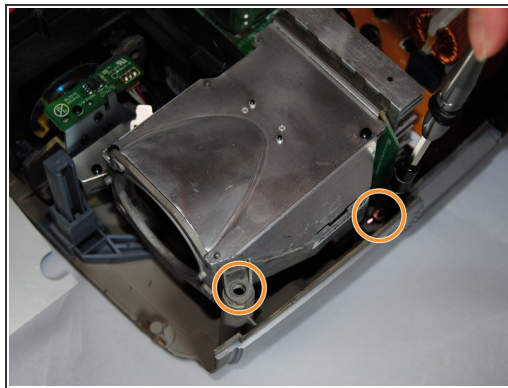
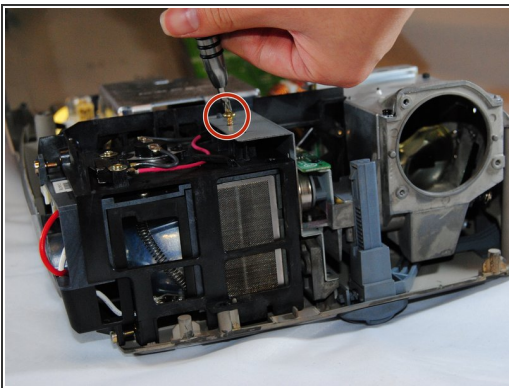
- Now that the screws have been removed, proceed with the removal of the outer panel.
- Gently remove the front lens panel.
- ⓘ Be forewarned, the panel will resist. Be careful not to break the lens.

## Step 5



- Being careful not to pull the wires inside the projector, gently lift the top panel off the projector.
- ❗ Rest the lid behind the projector so the insides are exposed and undamaged.

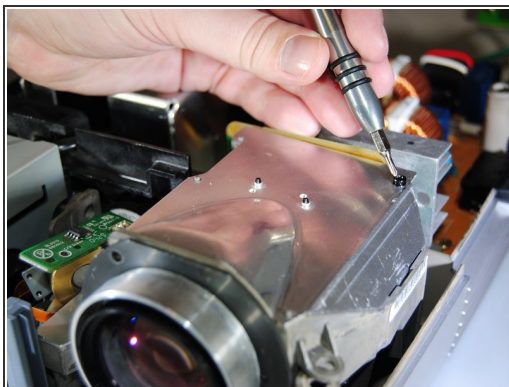
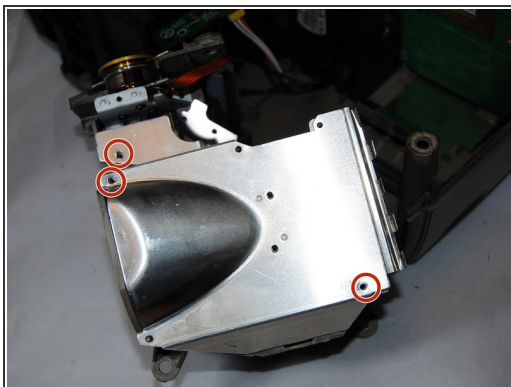
## Step 6 — Light Tunnel



- With the lens facing you, remove the following screws:
  - Using the Phillips #1 screwdriver, remove the (3) three 1.25 cm gold screws holding the metal grate between the color wheel unit and the bulb.
  - Using the Phillips #1 screwdriver, remove the (2) two 2 cm gold screws on the right side of the lens house.
  - Using the Phillips #1 screwdriver and a bent driver, remove the (4) four 2 cm screws on the back of the lens house.

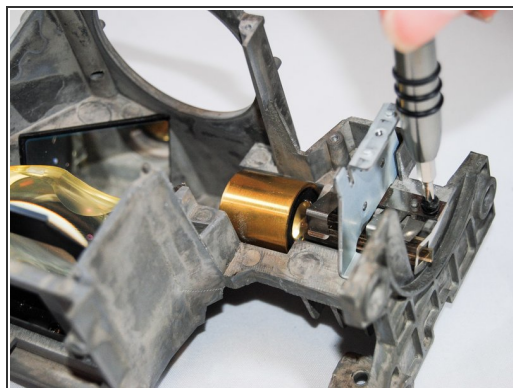
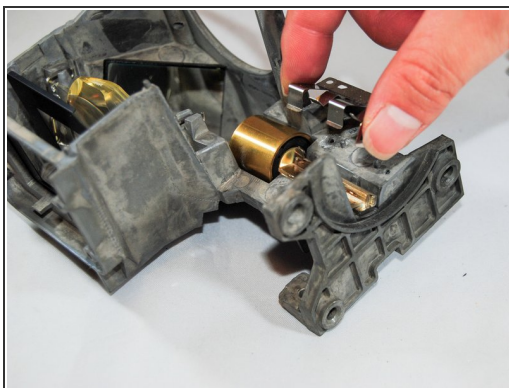
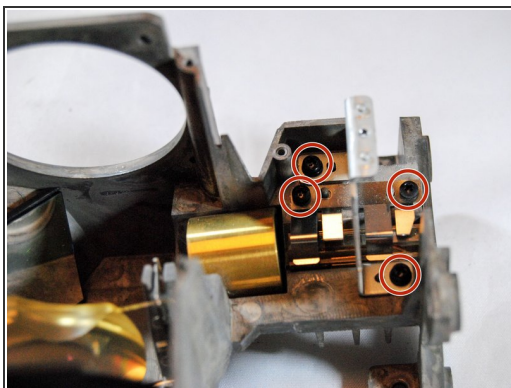


## Step 7



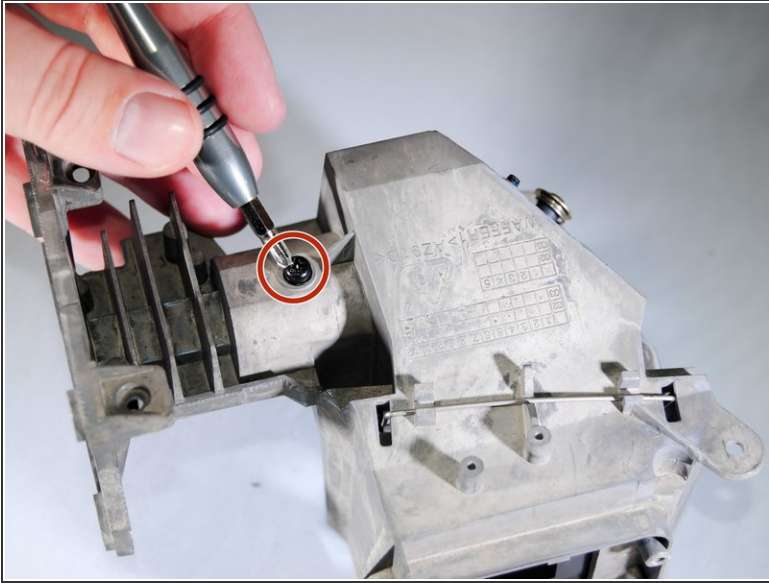
- Using a Phillips #0 screwdriver remove the three 1 cm black screws from the lens house.
- Remove the lens unit.

## Step 8



- Using the Phillips #0 head, unscrew the four 1 cm black screws.
- Remove the metal casings holding the tunnel in place.

## Step 9



- Using the Phillips #0 head, unscrew the black 0.5 cm screw on the bottom of the lens house.
- Remove the light tunnel.

To reassemble the device, follow these instructions in reverse order.