



InFocus Screenplay 4805 Mono Speaker Replacement

Replace the built-in 2.5 watt mono speaker if you are experiencing sound problems.

Written By: Marilyn Urness



INTRODUCTION

Replace the built-in 2.5 watt mono speaker if you are experiencing sound problems.

For this project you will need a torx screwdriver and metal spudger. You may need a can of compressed air to clean the inside of the projector.



TOOLS:

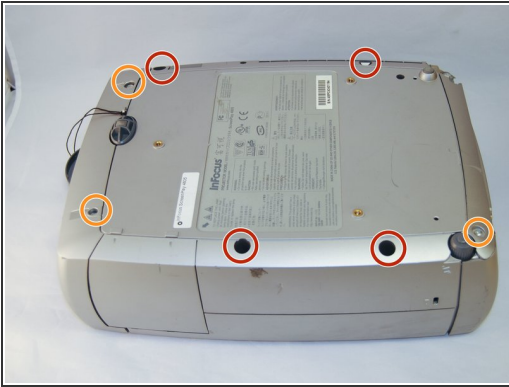
- [Metal Spudger](#) (1)
- [Tweezers](#) (1)
- [Phillips #0 Screwdriver](#) (1)
- [Phillips #1 Screwdriver](#) (1)
- [Phillips #2 Screwdriver](#) (1)



PARTS:

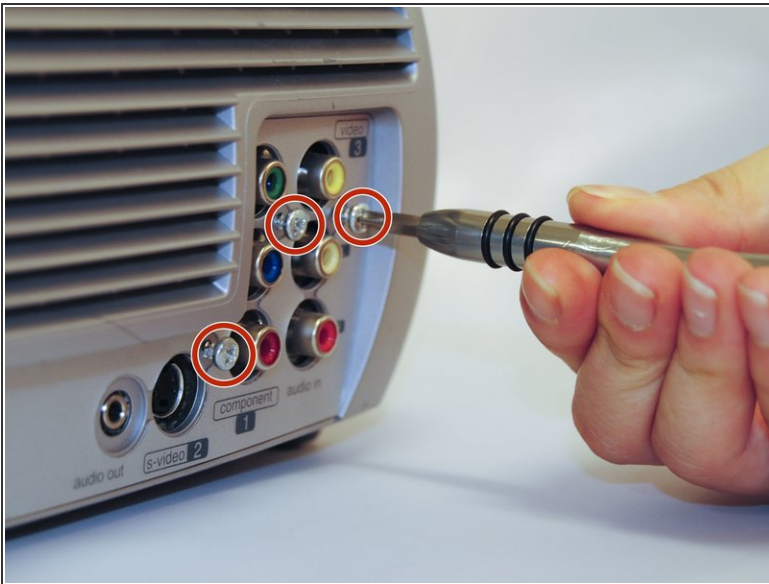
- [Replacement speaker](#) (1)

Step 1 — Top Panel



- Flip the projector on its back.
- Use the Phillips #2 screwdriver to remove the (4) four 2 cm gold screws.
- Use the Phillips #2 screwdriver to remove the (3) three 1 cm silver screws.

Step 2



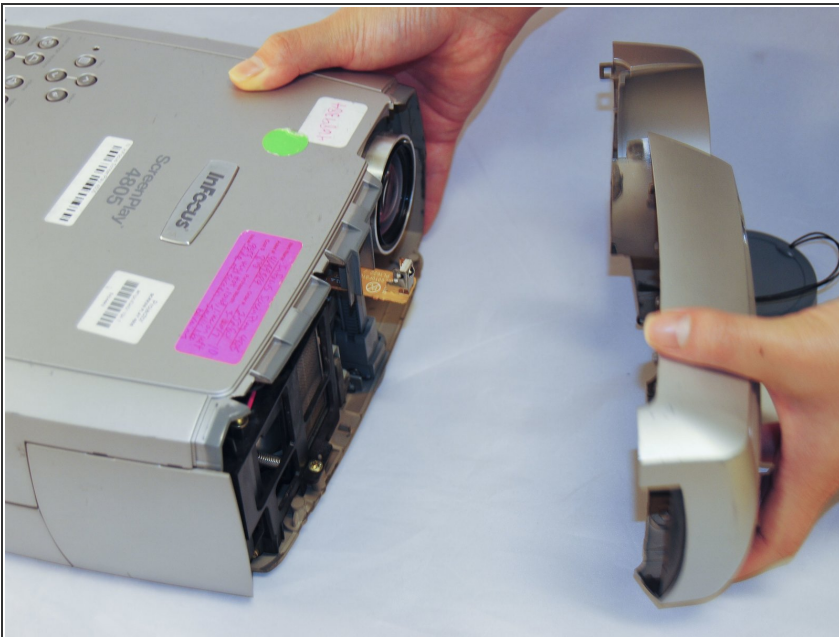
- Turn the projector, facing the back cable board towards you.
- Using the Phillips #0 screwdriver, remove the (3) three 1.0 cm silver screws on the back panel.
- Gently take off back cable panel.

Step 3



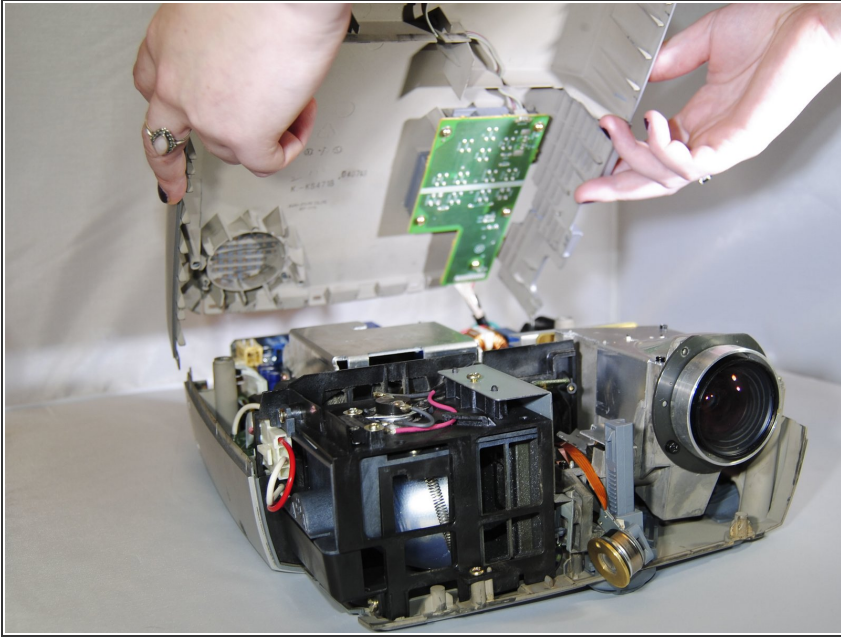
- Turn the projector so the front side with the lens is facing you.
- Gently pry the both of the grey lens rings using the metal spudger.

Step 4



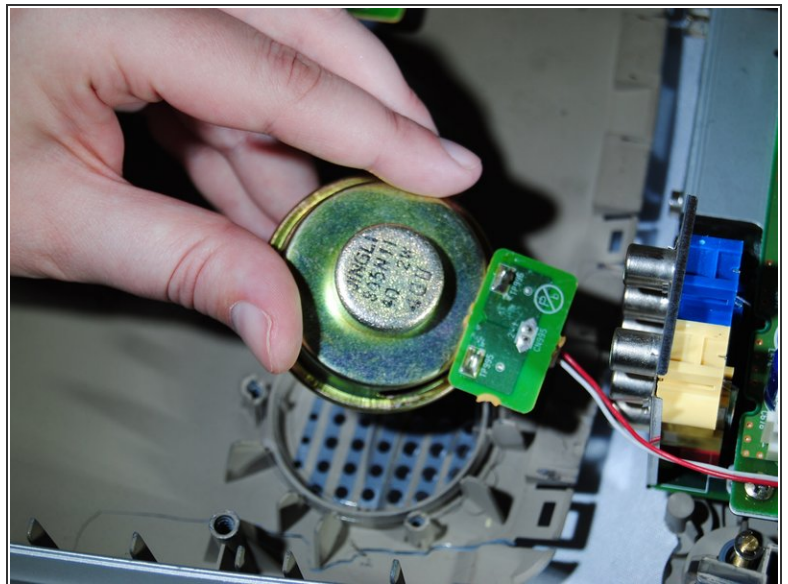
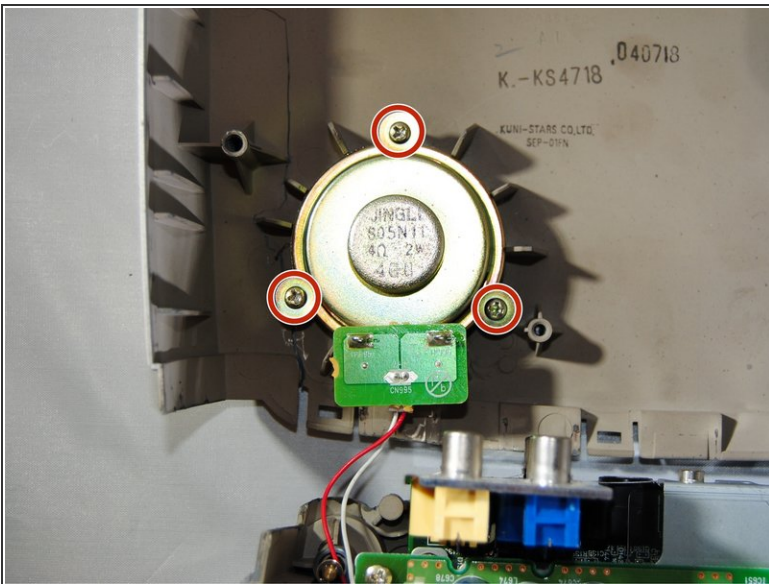
- Now that the screws have been removed, proceed with the removal of the outer panel.
- Gently remove the front lens panel.
- ⓘ Be forewarned, the panel will resist. Be careful not to break the lens.

Step 5



- Being careful not to pull the wires inside the projector, gently lift the top panel off the projector.
- ⓘ Rest the lid behind the projector so the insides are exposed and undamaged.

Step 6 — Mono Speaker



- Locate the circle speaker on the lower left corner of the inside of the lid.
- Use the Phillips #1 screwdriver to remove the three gold 2cm gold screws.
- Remove the speaker from the lid and flip metallic side down.

Step 7



- Gently pull the white connector to release the speaker.
- Lift the speaker out of its holding.

To reassemble your device, follow these instructions in reverse order.