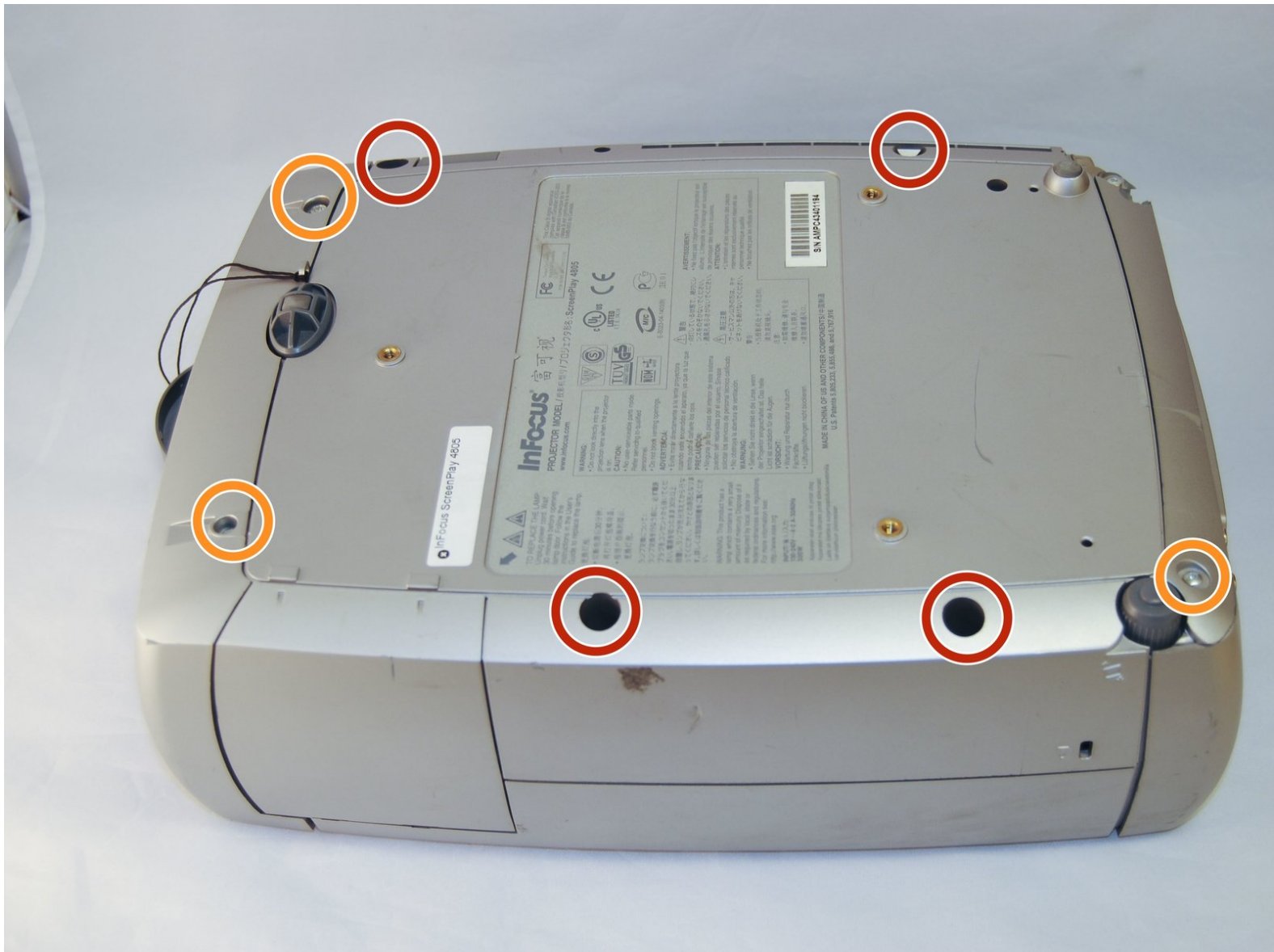




InFocus Screenplay 4805 Top Panel Replacement

This guide is the first steps to open the projector in order to replace any of its parts.

Written By: Marilyn Urness



INTRODUCTION

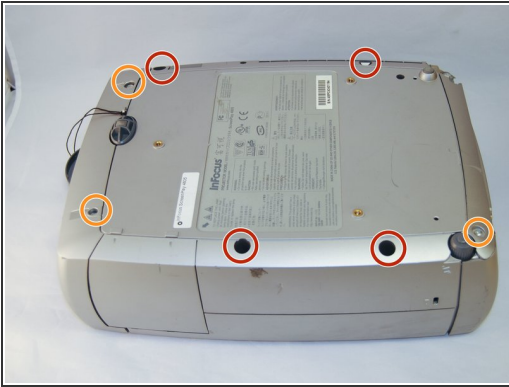
This guide shows how to open up the projector. This will allow for following actions to replace parts.



TOOLS:

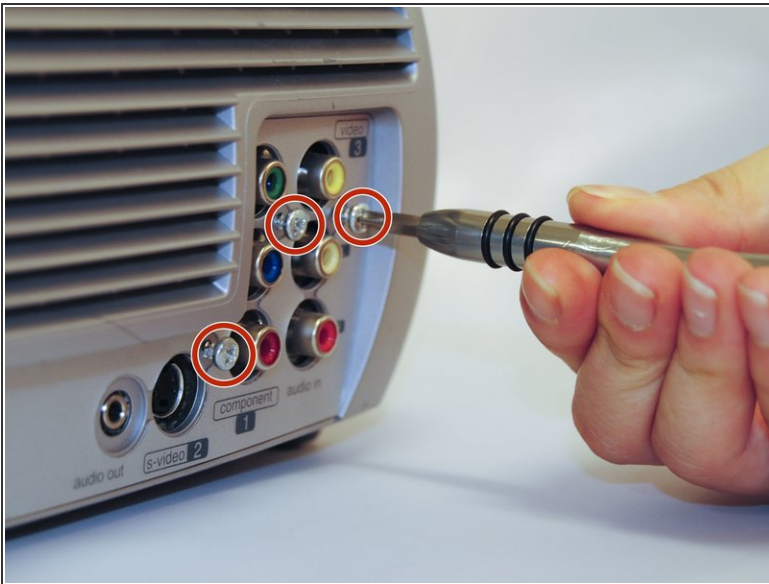
- [Metal Spudger](#) (1)
 - [Phillips #2 Screwdriver](#) (1)
 - [Phillips #0 Screwdriver](#) (1)
-

Step 1 — Top Panel



- Flip the projector on its back.
- Use the Phillips #2 screwdriver to remove the (4) four 2 cm gold screws.
- Use the Phillips #2 screwdriver to remove the (3) three 1 cm silver screws.

Step 2



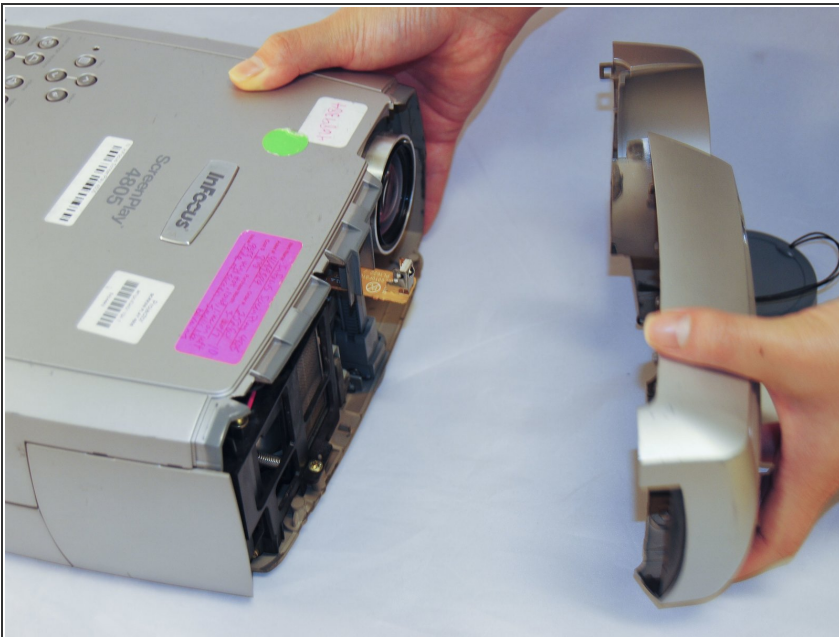
- Turn the projector, facing the back cable board towards you.
- Using the Phillips #0 screwdriver, remove the (3) three 1.0 cm silver screws on the back panel.
- Gently take off back cable panel.

Step 3



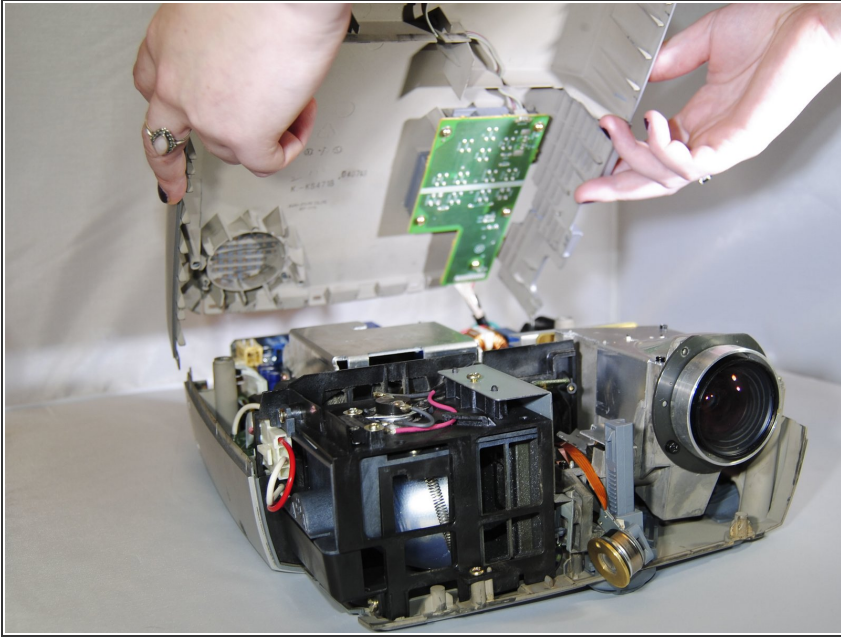
- Turn the projector so the front side with the lens is facing you.
- Gently pry the both of the grey lens rings using the metal spudger.

Step 4



- Now that the screws have been removed, proceed with the removal of the outer panel.
- Gently remove the front lens panel.
- ⓘ Be forewarned, the panel will resist. Be careful not to break the lens.

Step 5



- Being careful not to pull the wires inside the projector, gently lift the top panel off the projector.
- ⓘ Rest the lid behind the projector so the insides are exposed and undamaged.