



Infant Optics DXR-5 Monitor Screen Replacement

The purpose of this guide is to show the steps required to replace the screen of the hand held monitor for the Infant Optics DXR-5.

Written By: Charles Neal



INTRODUCTION

Ensure that the hand held monitor is off and unplugged prior to starting this guide.

Secure screws to avoid losing them.

Screws are small and can pose a possible choking hazard for small children.



TOOLS:

- [Phillips #2 Screwdriver](#) (1)
 - [Spudger](#) (1)
 - [Suction Handle](#) (1)
 - [Power Drill](#) (1)
 - [1/16" drill bit](#) (1)
-

Step 1 — Battery



- Press on the blue clip on the back and slide it down.

i In the second picture there is a slight gap at the top of the blue clip.

Step 2



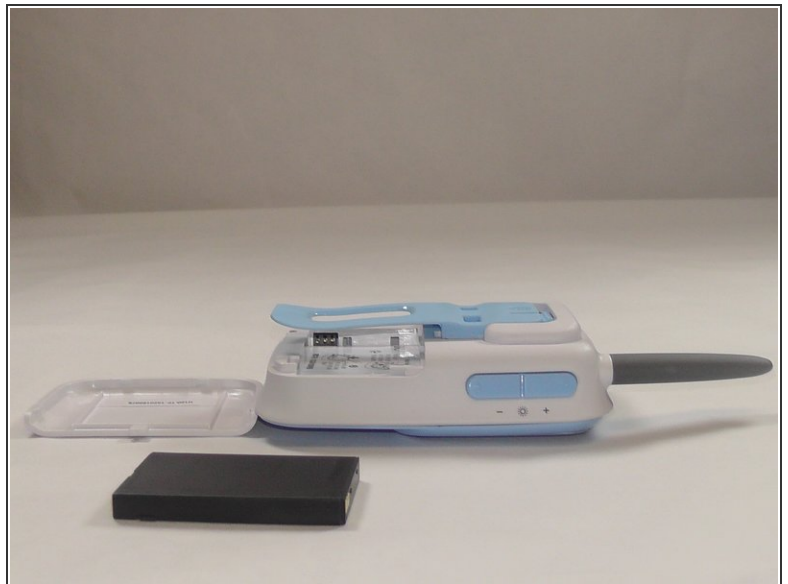
- Pull the blue clip away from the body of the hand held monitor.

Step 3



- Slide the rear white panel off as shown.

Step 4



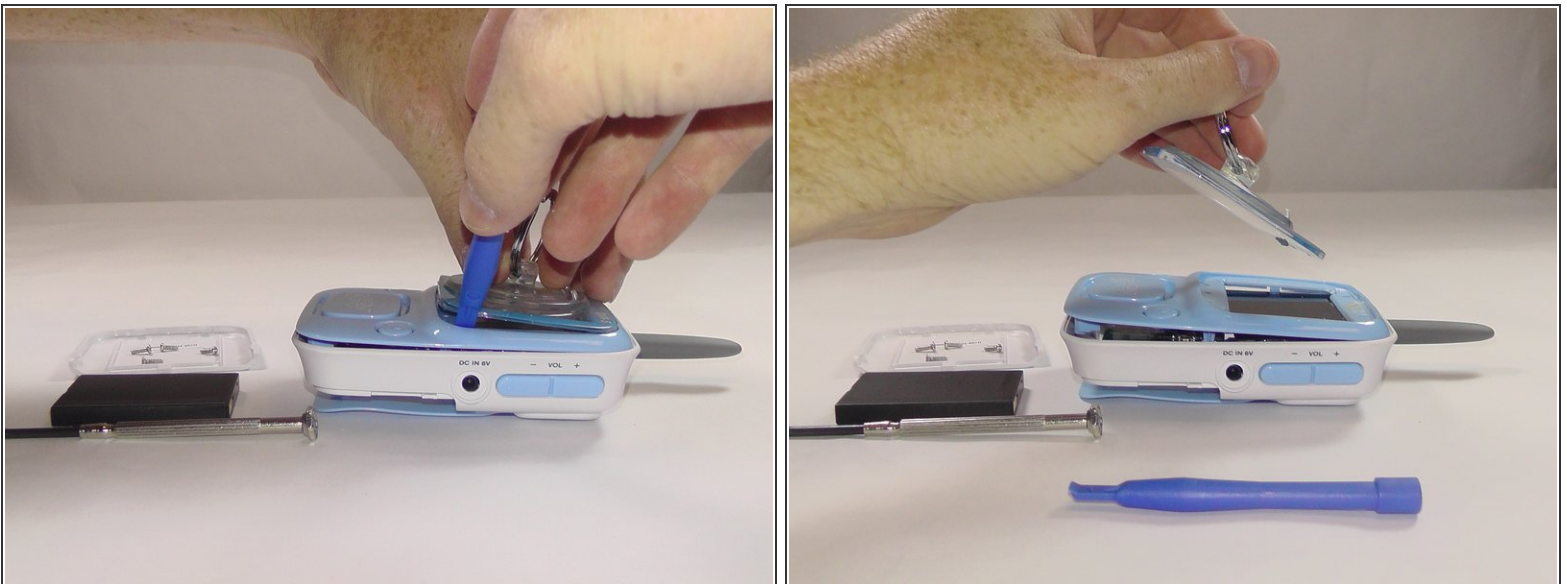
- Remove the battery by pushing in on the right side and then pulling the battery up and out of the body of the hand held monitor.

Step 5 — Monitor Screen



- Remove the four 6.0 mm Phillips screws located on the back of the hand held monitor using a Phillips #2 screwdriver.
- ☑ There are two types of screws. Be sure to return the screws to their respective holes upon reassembly.

Step 6



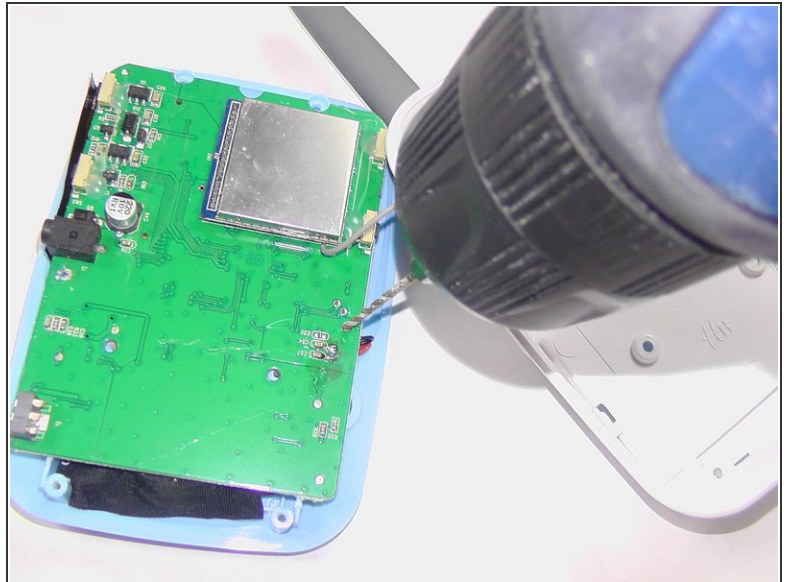
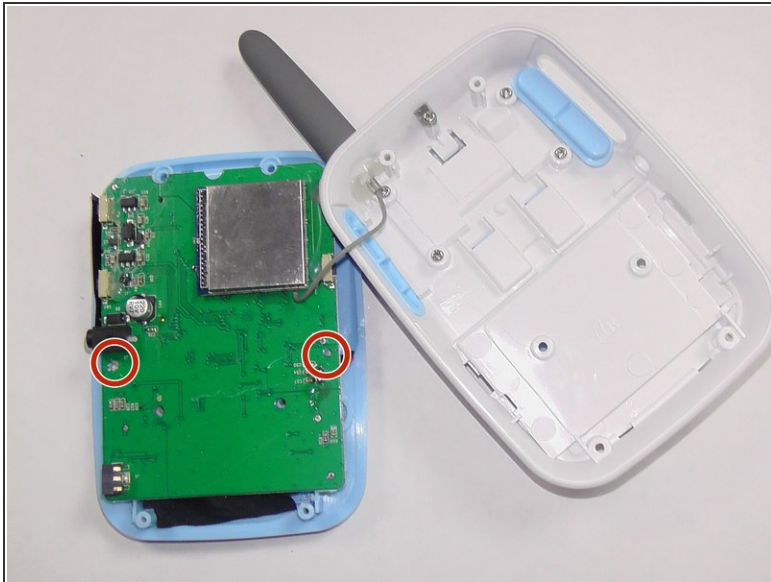
- Carefully remove the clear face plate on the front of the hand held monitor using a plastic spudger and a suction cup.
- ⓘ Use a heat source to loosen the adhesive around the edge of the face plate before applying any pressure to the face plate.

Step 7



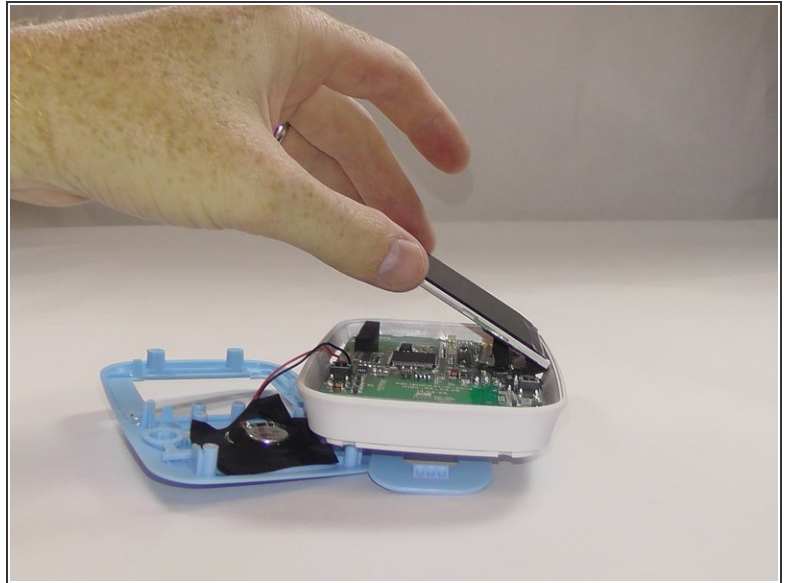
- Using a Phillips #2 screwdriver, remove the two 6.0 mm Phillips screws that are exposed after removing the face plate.

Step 8



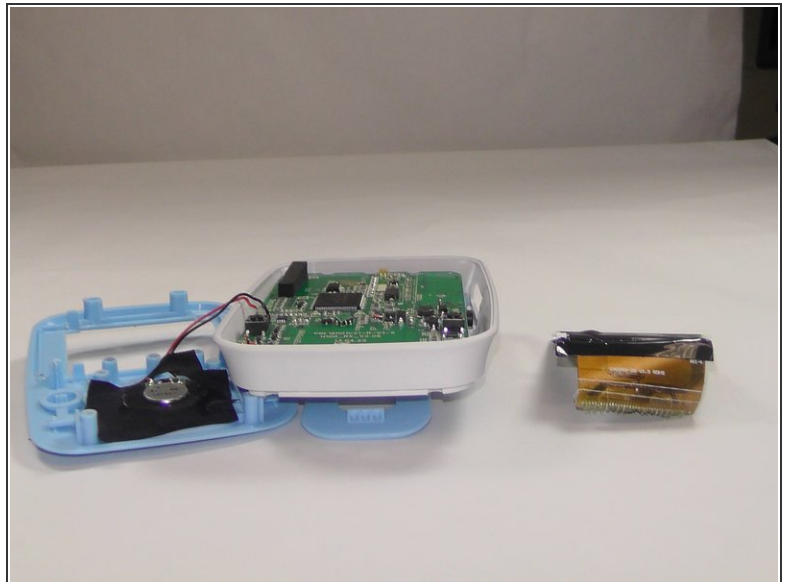
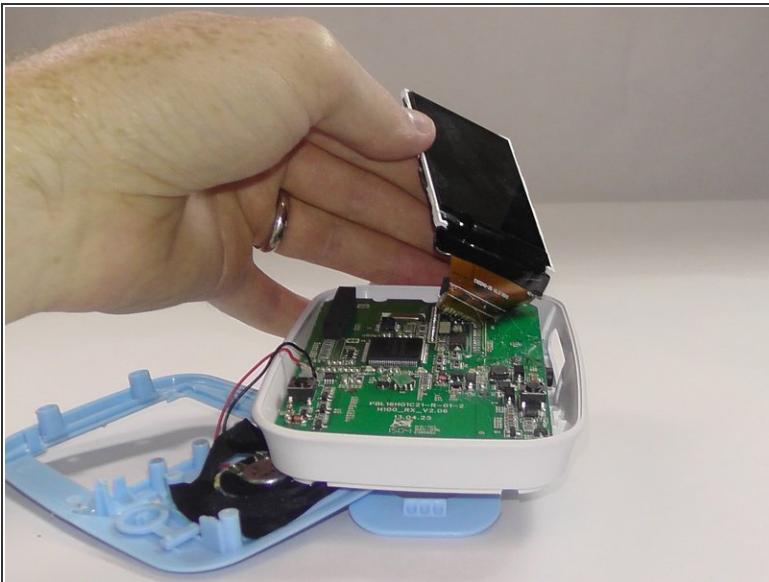
- Using a drill carefully drill out the plastic posts that connect the mother board to the face plate.

Step 9



- Carefully open the hand held monitor and flip the screen (highlighted in red) out of the way.

Step 10



- Remove the hand held monitor screen from the mother board by carefully pulling from the point where it is attached with an adhesive to the mother board.

To reassemble your device, follow these instructions in reverse order.