



# Infinity Escape Massage Mechanism Replacement

This guide will show step by step how to access and remove the massage mechanism.

Written By: Nick





## TOOLS:

- [Cordless Drill](#) (1)
- [Phillips #1 Screwdriver](#) (1)
- [Phillips #2 Screwdriver](#) (1)
- [Zip Ties](#) (1)
- [White Lithium Grease](#) (1)
- [Flush Wire Cutters](#) (1)

## Step 1 — Massage Mechanism



**⚠** Before beginning make sure chair is in home position and massage mechanism has been moved to the bottom of the track using the "manual" mode. Lastly make sure chair has power.

- Remove the 8 philips head screws.

**i** Not shown here : please remove ALL leather back pads and head pillows.

## Step 2



- Next we need to remove the speakers. Speakers are removed by a secret button, when pressing in the area marked by the red circle you should feel a metal button. While pressing the button tilt the speaker upwards.
- Notice the angle on the speaker, from here go ahead and with reasonable force pull the speaker towards you.



## Step 3



- To remove the arms we first need remove the hip airbags. This will require a good amount of hand strength. while standing on the outside of the chair grab both sides of the airbag plate and pull up.
- ⚠ This will require a lot of force don't be afraid to pull up harder than you should.
- Remove the 2 bolts and washers that hold the arm on the frame.
- ⚠ Not shown here : once the screws are removed each arm has a air hose and tiny power plug be sure to disconnect both of these before pulling the arm away from the chair.

## Step 4



- Remove the 6 screws on each side of the track. This will loosen the chair piece from the frame .
- ⚠ Be sure mechanism is at the bottom of the chair or else it will make this part much more difficult .
- You will notice these spikes on each side of the frame, lift the chair piece over these .

## Step 5




- ⓘ Once chair piece is loose from the bolts and Spikes you can go ahead and gently lay it down towards the front of the chair.



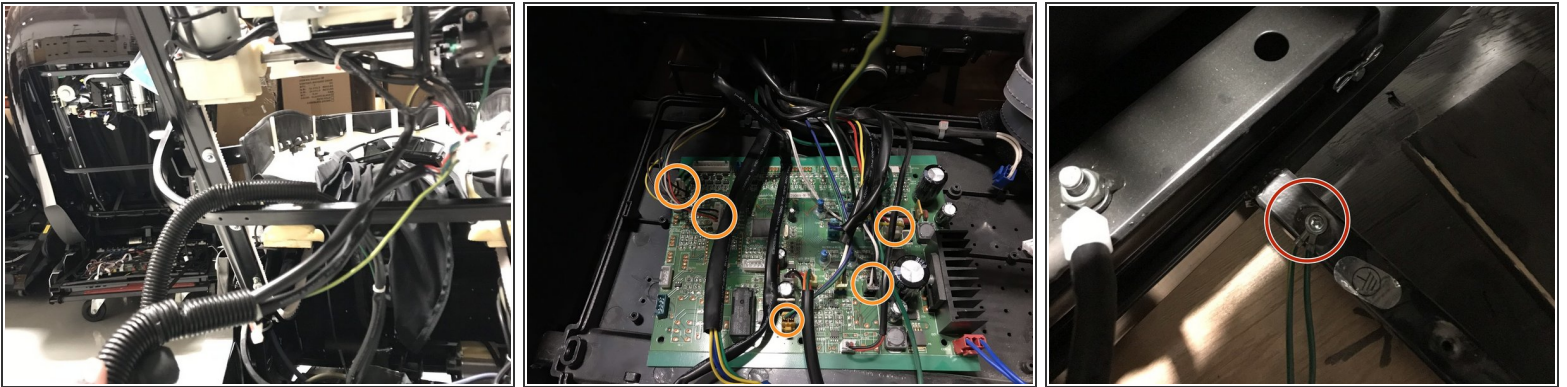
## Step 6




 at this point you should power on the on the chair using the remote. Carefully drive the mechanism to the top of the chair using the manual mode.

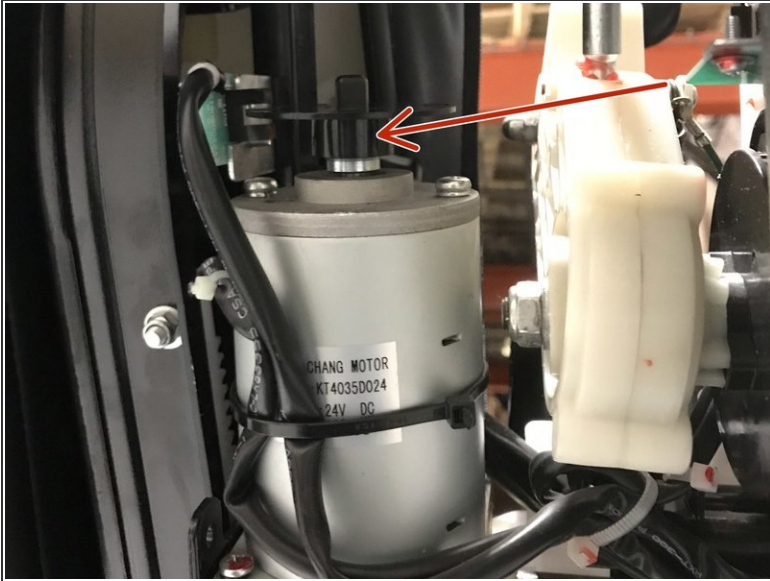
- each side of the bracket has 4 screws .remove them .

## Step 7



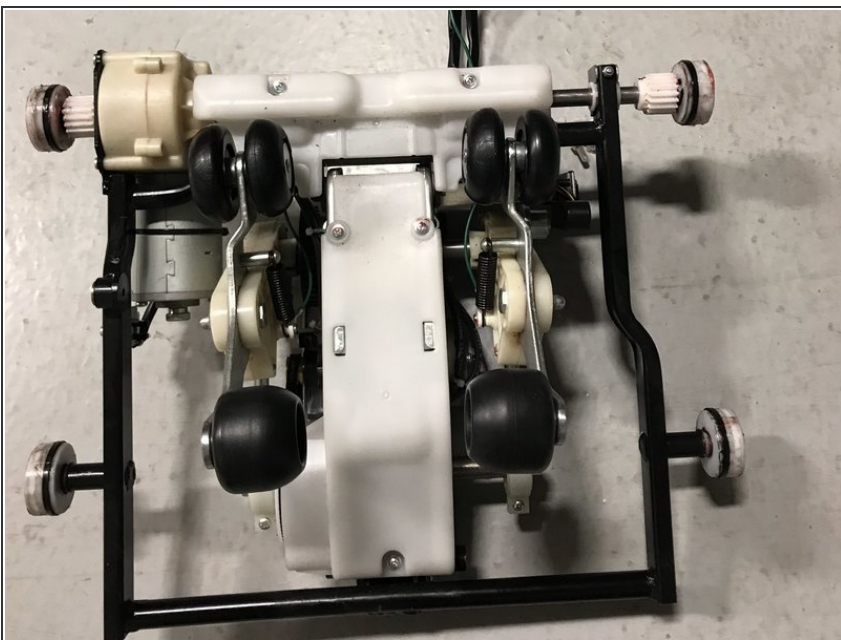
- Next you will need to remove the wire harness from the chair. open the power box and unplug the marked cables.
- Be sure to unscrew the ground wire as well , it is located near the middle of the chair and has a ground wire leading to a cylinder as well, please remember this.
-  Be sure to cut all zip ties and remember there general location for reassembly purposes

## Step 8



- IF FOR ANY REASON the mechanism will not drive up to the top of the track or chair has no power, please remove this disk cover. and turn the the motor manually.
- use this bolt to drive the motor up or down. BEWARE this is a incredibly time consuming way of driving the mechanism but it does work.

## Step 9



- YOU DID IT! .



To reassemble your device, follow these instructions in reverse order.