



# Infinity Genesis Footrest Extend Motor Replacement

This guide will show you how to replace the extend motor in a Genesis Footrest.

Written By: Nick





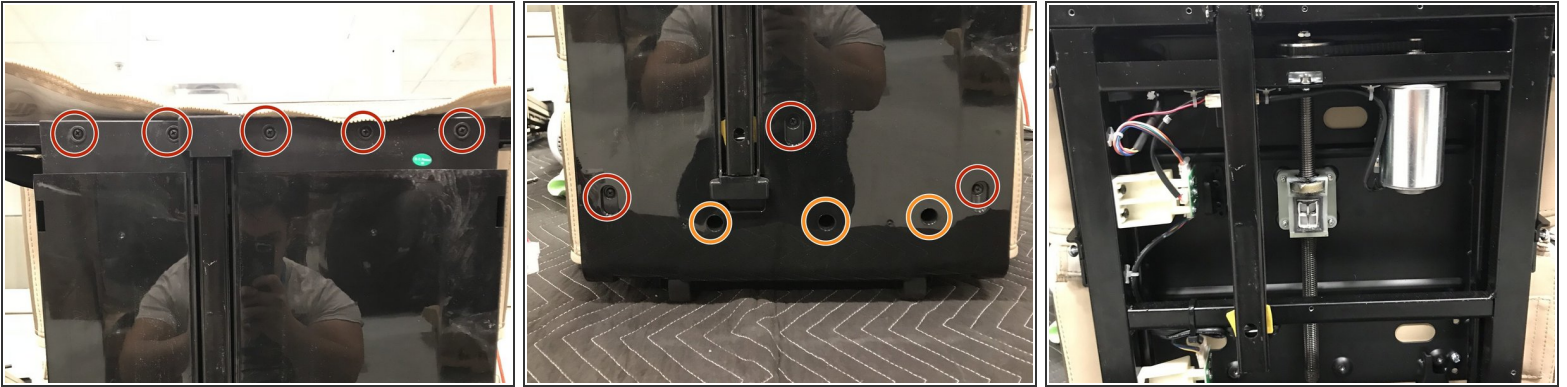


## TOOLS:

- [Cordless Drill](#) (1)
- [Diagonal Cutter](#) (1)
- [Phillips #1 Screwdriver](#) (1)
- [Zip Ties](#) (1)
- [Philips bit](#) (1)



## Step 1 — Extend Motor



- Remove all 8 screws
- Remove all 3 screws

**⚠ WARNING THIS PLASTIC COVER COMES OFF AS ONE PIECE AND IS EASILY BREAKABLE .**

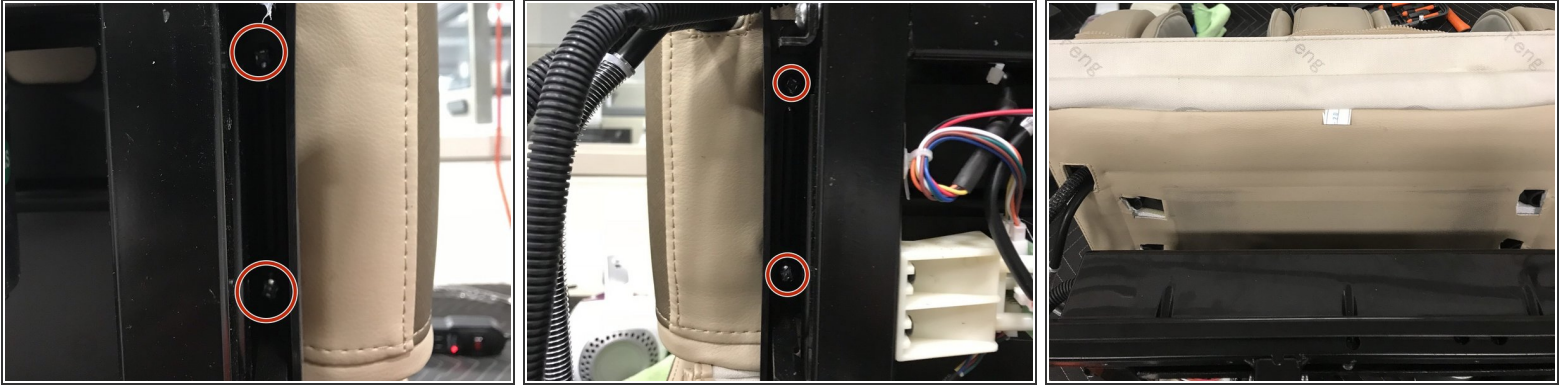
## Step 2



- Remove Red Zip tie by simply cutting it. DON'T FORGET THIS IS HERE YOU WILL NEED TO ATTACH ANOTHER ONE DURING REASSEMBLY .
- Next go ahead and remove the silk wire cover , it simply comes off by separating the Velcro .



### Step 3



- Remove all 4 bolts

**i** Once all four bolts are removed the upper half of the footrest will be separated.

### Step 4




**i** Lift up on the Upper portion of the footrest and unzip the leather in the middle. This will separate the upper from the lower.

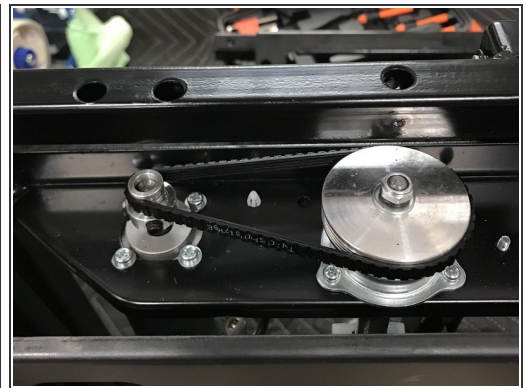



## Step 5



 Upper piece will still be connected to the lower half via Wire harness and air hose be careful NOT to Drop or Pull on these as it may require you to disassemble even further in order to fix.

## Step 6




- Remove all 5 Screws on the front side of the footrest frame.
-  Be careful with this piece as it may require a little bit of prying . It will easily break.
- This power connector is threaded through this plastic piece . Take care when pulling cover off.



## Step 7



- First You need to remove the belt from the motor. To do this simply use your fingers and pinch the belt and at the same time spin it and it should pop right off.

 DO NOT USE ANY TOOLS ON THIS . IF YOU DO USE TOOLS MAKE SURE THEY ARE PLASTIC GRADE AS WE DON'T WANT TO DAMAGE THE BELT.

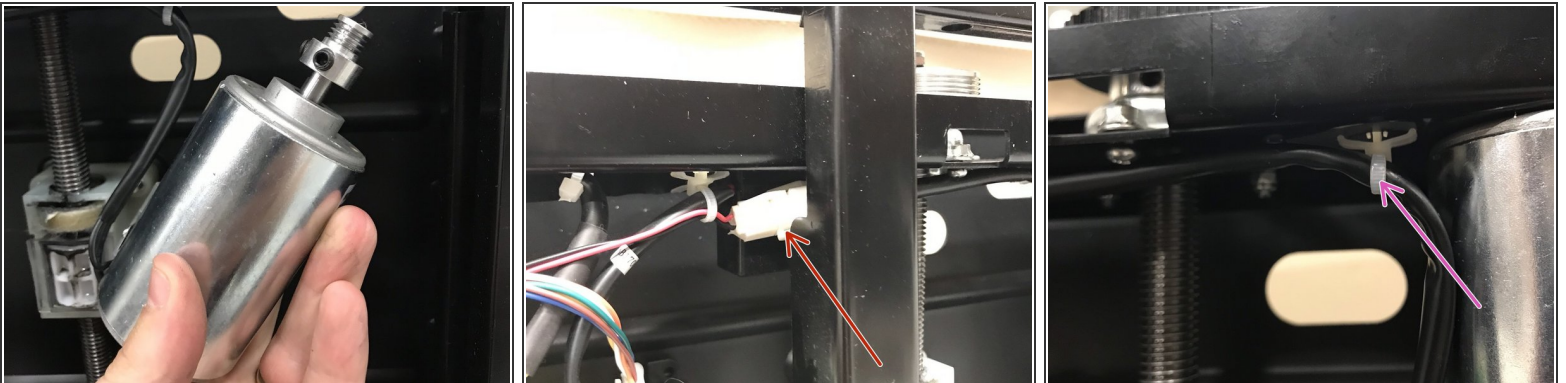


## Step 8



- once the belt is removed go ahead and unscrew the 4 bolts. Mind you the motor will fall once the screws are removed keep your other hand on it at all times
- In order to access the back screws under the bar use the holes marked in the photo.

## Step 9

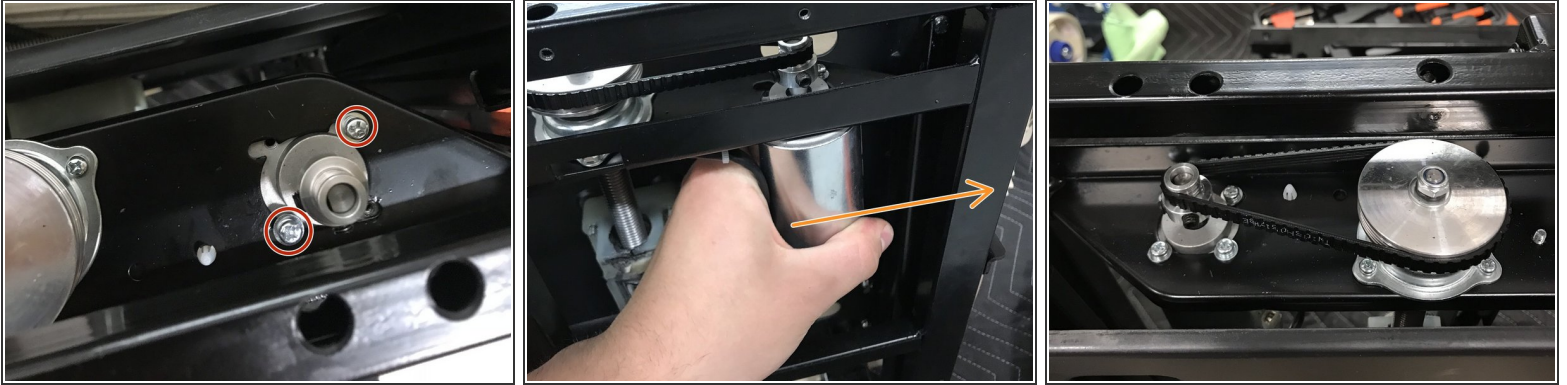


- Motor connector is located here , simply unplug the old motor and replace .

**⚠ PLEASE TAKE NOTE SOMETIMES THESE DON'T COME WITH A CONNECTOR AND NEED TO BE EITHER CAPPED OR SOLDERED TOGETHER. IF THIS IS THE CASE CALL TECH SUPPORT @ 603.910.5000**



## Step 10 — Attaching new motor Tips



- In order to get new motor into frame and attach belt you need to put 2 screws in the motor LOOSELY DO NOT TIGHTEN ANYTHING yet .
- Now slip on the belt to loose motor and with a good amount of force push to the right until motor belt and motor mount point line up . Now tighten those 2 screws. Motor should be mounted and you can install last 2 bolts.

To reassemble your device, follow these instructions in reverse order.