



Innovative Technology iPod Docking Station IT-5022WHT Teardown

Show you the guts of the device, and offer insight on how to repair it.

Written By: Dylan





TOOLS:

- [Pro Tech Toolkit](#) (1)
-

Step 1 — Overview



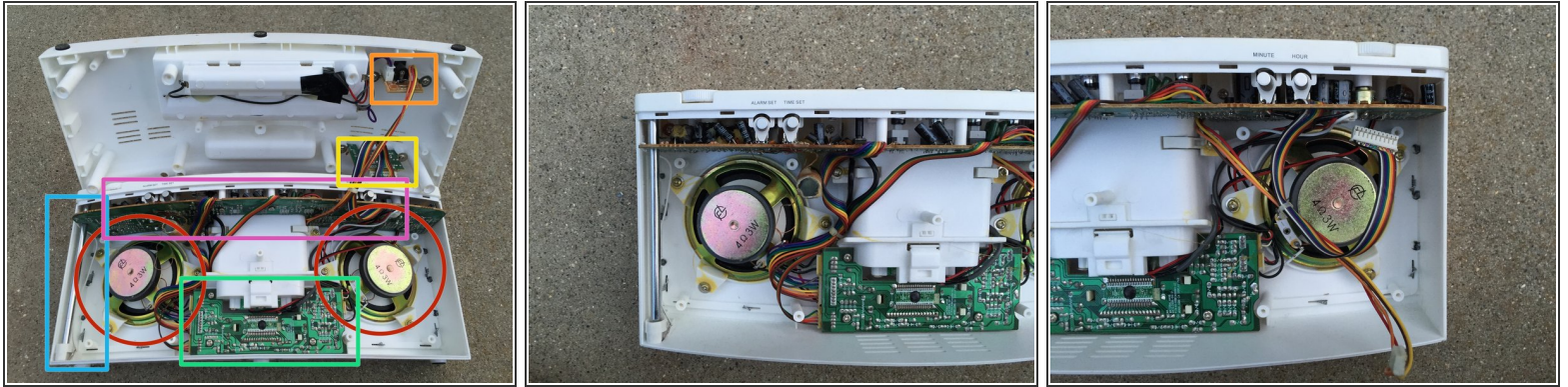
- Before Teardown
- Condition: Well used
- Noted issue: static sound when adjusting volume.

Step 2 — Opening the Back Panel



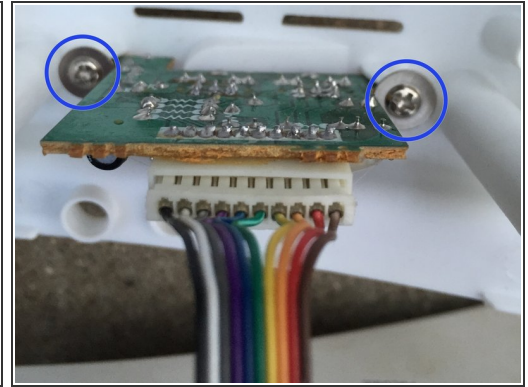
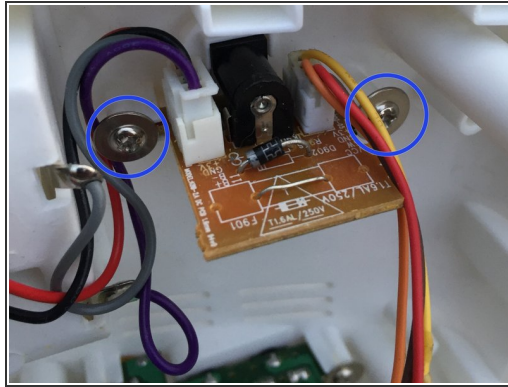
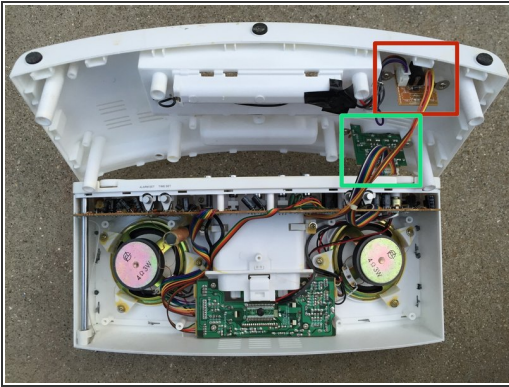
- Remove back battery panels. There are two: the main panel, and the smaller back up panel behind the main.
- Remove the 9 phillips screws.

Step 3 — Look at the Guts



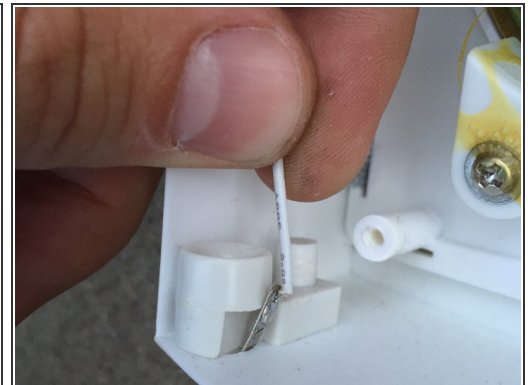
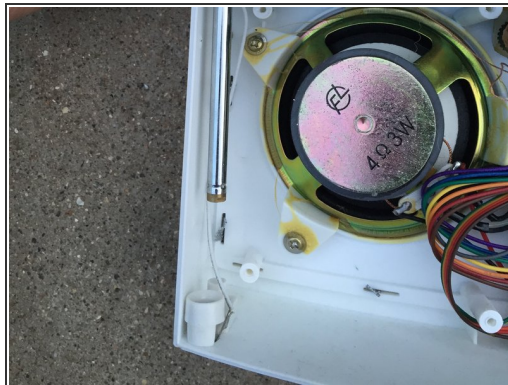
- Speakers
- Display & Logic Board
- Top panel buttons board
- Audio Jacks
- DC Power Connector
- Antenna

Step 4 — DC Power Board and Audio Jacks



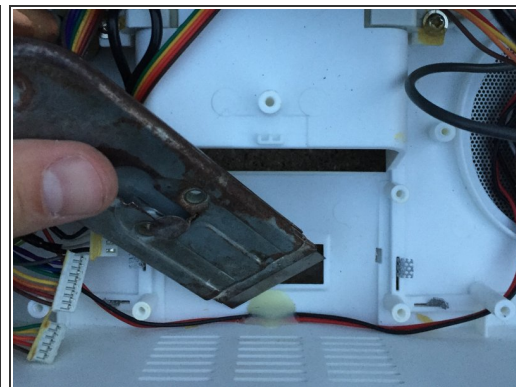
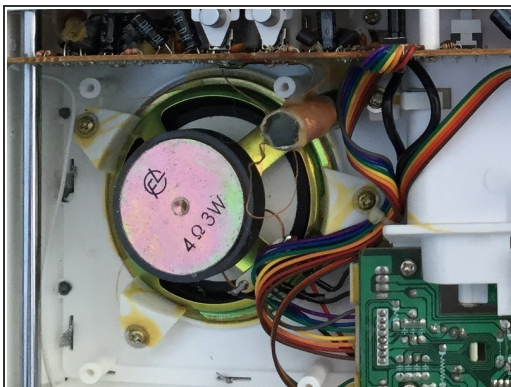
- DC Power Board
- Audio Jacks board
- Remove the two screws
- The boards are glued in, so carefully pry them out of the casing.

Step 5 — Antenna Removal



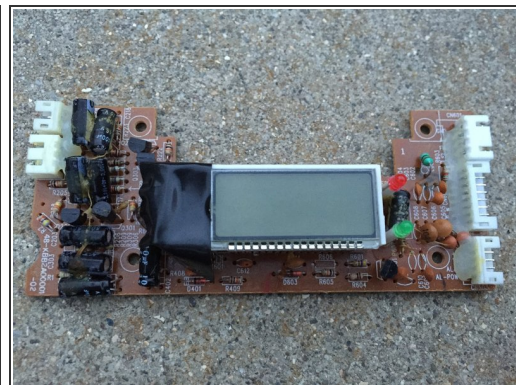
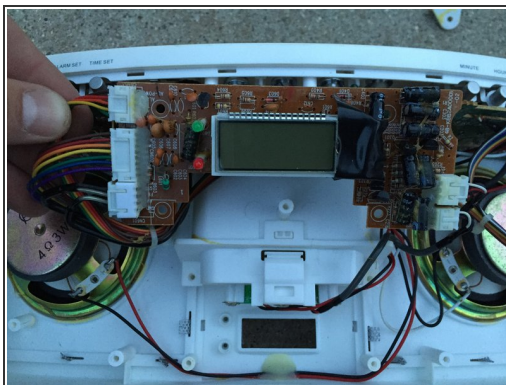
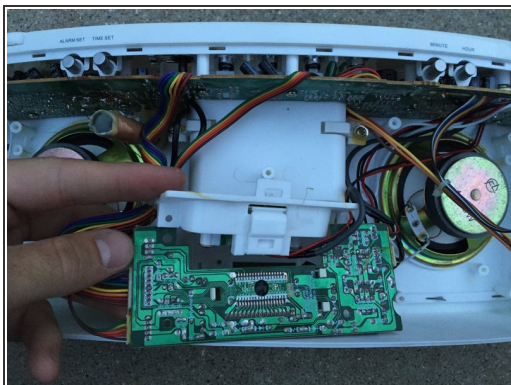
- You can pull the antenna apart without opening the entire case. This is helpful if just part of the antenna is bent.
- For full removal, remove the screw on the bottom of the box labeled "antenna", and slide the antenna out the top.
- Coax cable connects the antenna to the tuning circuit on the upper PCB.

Step 6 — Speakers



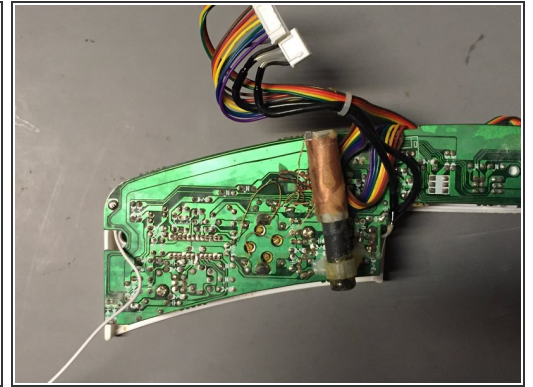
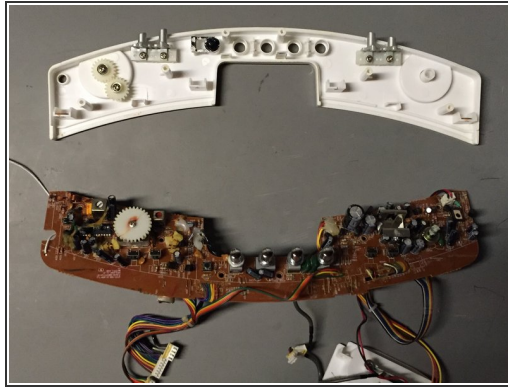
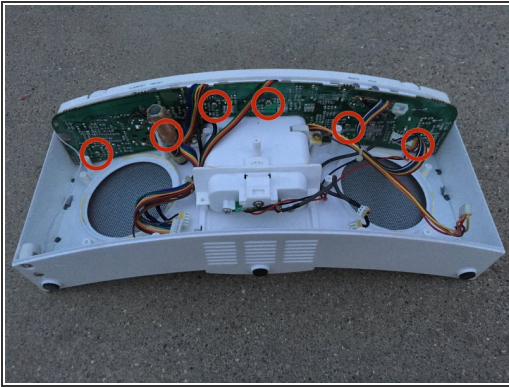
- Remove three screws holding the three mounting brackets for each speaker.
- Use a blade to remove the glue holding the speaker wires in.
- Carefully pry the speakers off their mounting points because they are glued in.

Step 7 — LCD Panel and Logic Board



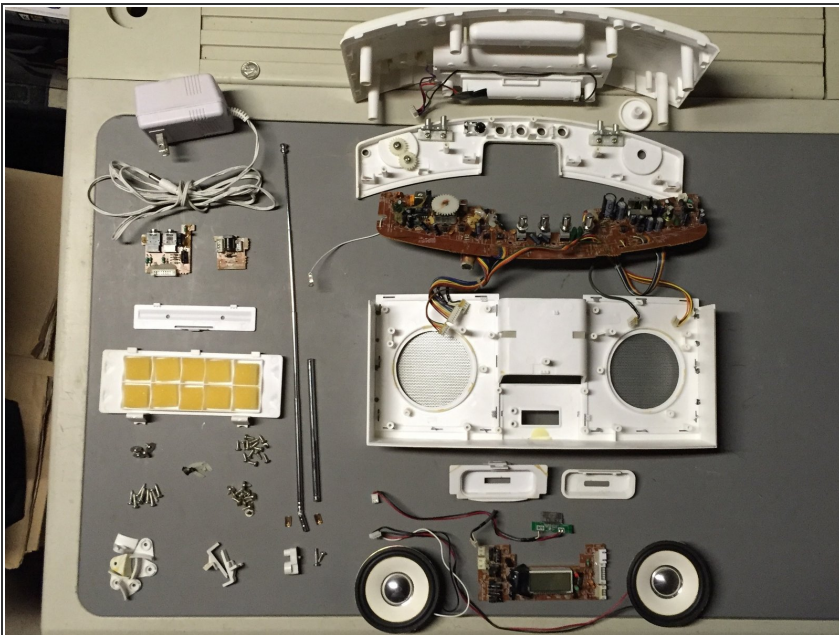
- Removing the LCD Panel and motherboard.

Step 8 — Top Panel Buttons Board



- Remove 6 screws
- Pry out the panel by hand
- ⚠ Careful of the volume and tuning nobs when pulling the board down
- Check out that coil

Step 9 — Exploded View



- Overall this product was pretty easy to take apart.
- The internals were pretty easy to identify based on their location and appearance.
- One drawback was that the speakers were glued in. The glue prevents rattling, but makes the speakers harder to get to. Some glue should be used when replacing the speakers.
- 8/10 repairability