



Insignia Flex 10.1 NS-P10A6100 Back Case Replacement

Prerequisite Only

Written By: Samantha Damewood



INTRODUCTION

Prerequisite Only



TOOLS:

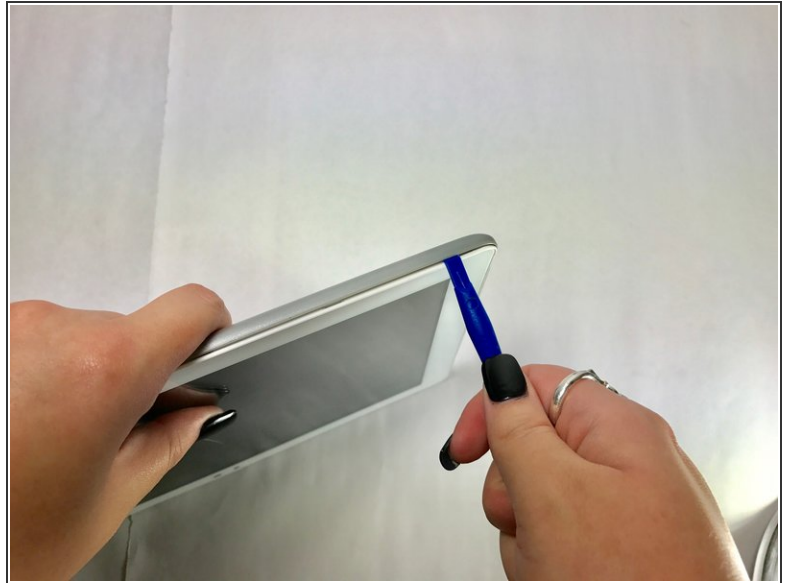
- [iFixit Opening Tools](#) (1)
-

Step 1 — Back Case



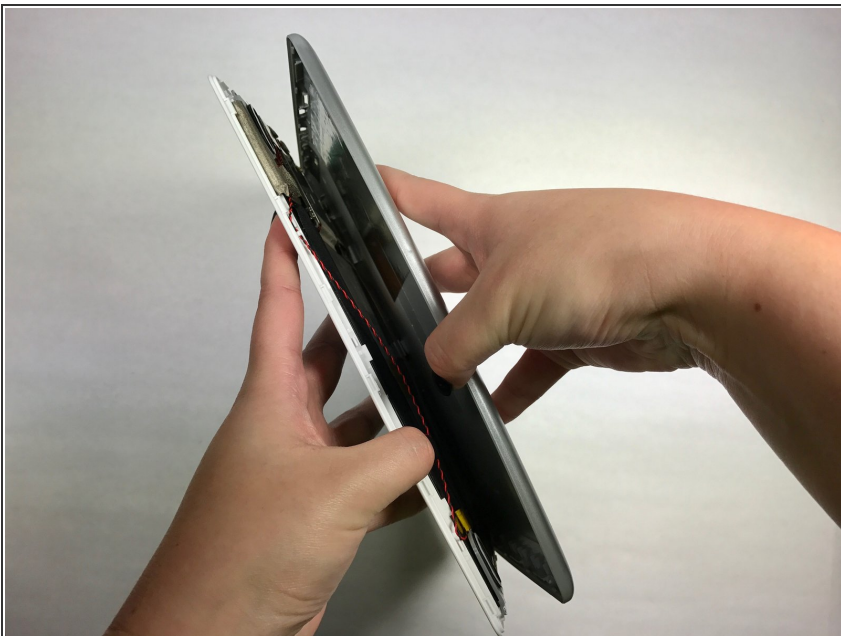
- ⚠ Make sure your tablet is turned off and not connected to a power source to prevent personal injury.
- ⓘ The volume rocker and power button located on the top edge by the camera are not connected pieces and will become free from the device once the front panel is removed from the back case. They are easily put back in place when reassembling the tablet.
- Position the tablet with the top edge by the camera facing down.
- Insert the plastic opening tool between the front panel and back case at the upper left hand corner of the tablet.

Step 2



- Slide the plastic opening tool along the edge of the tablet between the front panel and back case.
- Repeat this process for the two shorter edges of the tablet leaving the top edge by the camera still snapped in place.

Step 3



- Using an unfolding motion along the top edge of the tablet, carefully separate the front panel from the back case.

To reassemble your device, follow these instructions in reverse order.