



Insignia Flex 10.1 NS-P10A6100 Battery Replacement

Follow this guide to replace the battery of an Insignia Flex 10.1 NS-P10A6100 tablet.

Written By: Samantha Damewood



INTRODUCTION

If your tablet will not turn on even after charging, you may need to replace the battery. Be careful not to severely bend or puncture the battery when you are removing it as it may leak potentially dangerous chemicals.



TOOLS:

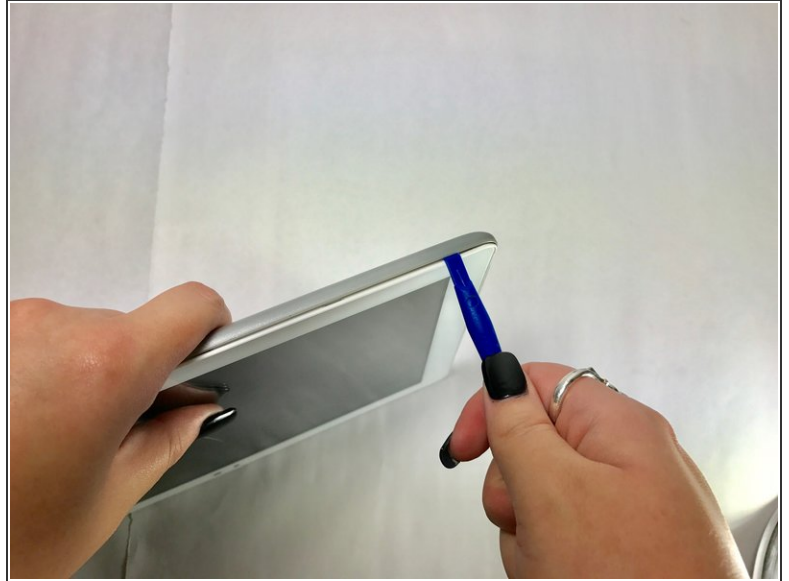
- [iFixit Opening Tools](#) (1)
 - [Soldering Iron](#) (1)
-

Step 1 — Back Case



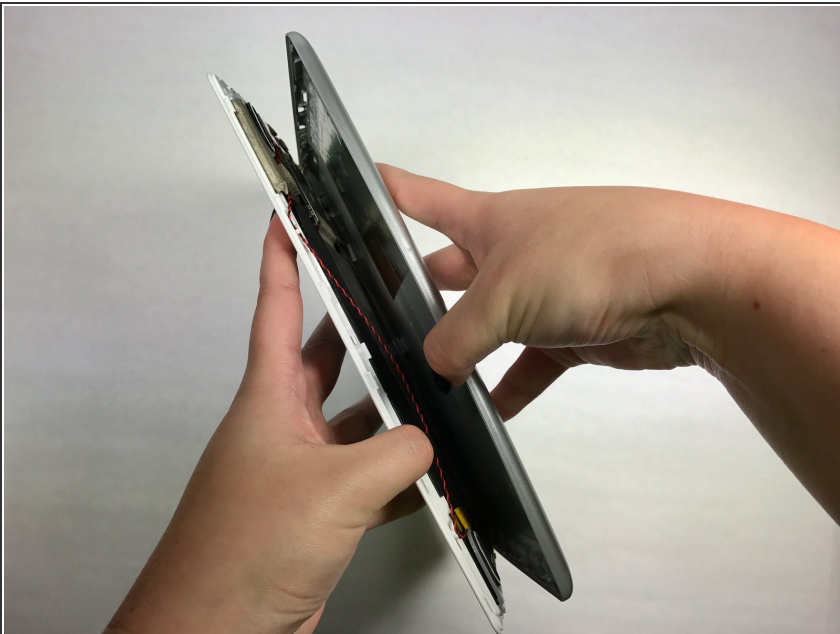
- ⚠ Make sure your tablet is turned off and not connected to a power source to prevent personal injury.
- ⓘ The volume rocker and power button located on the top edge by the camera are not connected pieces and will become free from the device once the front panel is removed from the back case. They are easily put back in place when reassembling the tablet.
- Position the tablet with the top edge by the camera facing down.
- Insert the plastic opening tool between the front panel and back case at the upper left hand corner of the tablet.

Step 2



- Slide the plastic opening tool along the edge of the tablet between the front panel and back case.
- Repeat this process for the two shorter edges of the tablet leaving the top edge by the camera still snapped in place.

Step 3



- Using an unfolding motion along the top edge of the tablet, carefully separate the front panel from the back case.

Step 4 — Battery



- Using the plastic opening tool, lift up the black retaining flap that secures the ZIF (zero insertion force) ribbon connector over the battery to the motherboard.

Step 5



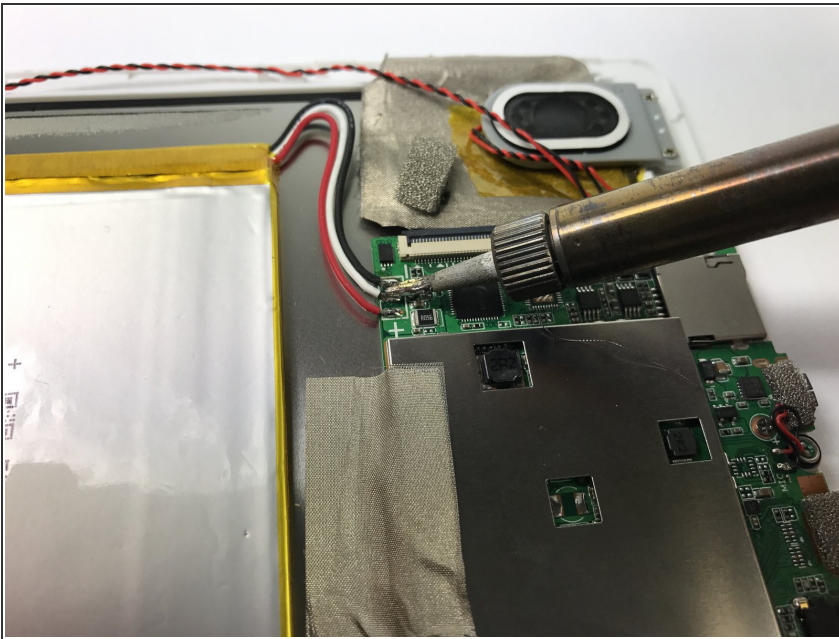
- Pull the ZIF (zero insertion force) ribbon connector out from underneath the black retaining flap.

Step 6



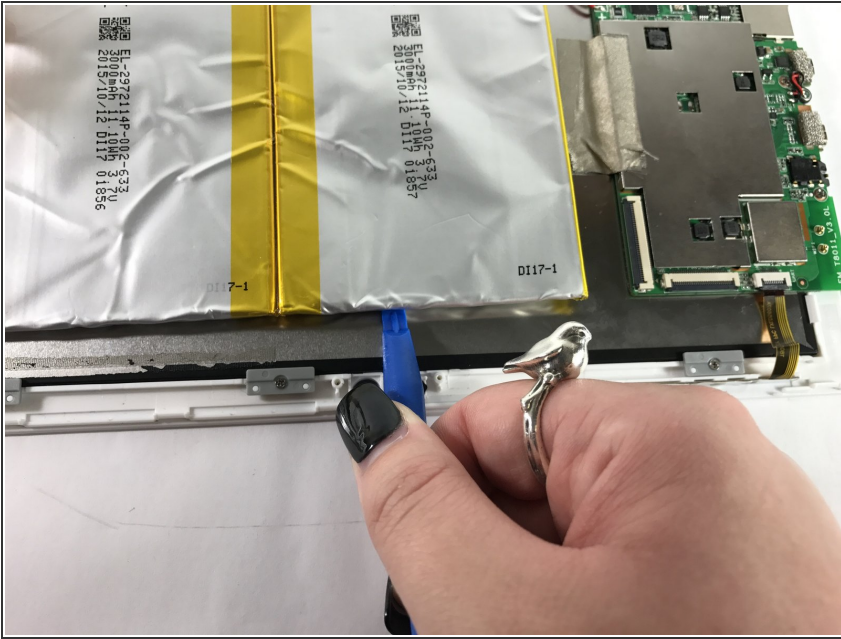
- Using the plastic opening tool, remove the black tape that secures the battery to the front panel.
- Repeat this process for the black tape securing the other side of the battery to the front panel.

Step 7



- ⚠ Desoldering can cause fumes that are dangerous to breathe in, and materials may be hot.
- Desolder the three joints connecting the red, black, and white wires from the battery to the motherboard.
- ⓘ A thorough guide including step by step instructions on how to solder and desolder can be found [here](#).


Step 8




- Insert the plastic opening tool between the battery and the front panel in the middle of the battery pack.

Step 9



 Be careful not to severely bend the battery or puncture it as it may leak potentially dangerous chemicals. Edit: THE BATTERY CAN EXPLODE AFTER THE LEAK OF FUMES. IF IN ANY KIND OF CONTACT WITH WATER, FROM INSIDE OF BATTERY, THE BATTERY WILL CATCH ON COLOURED FLAME. YES, COLOURED FLAME. IT'S A GOOD EXPERIMENT BUT ONLY IN ADULT SUPERVISION AND SAFETY

- Using the plastic opening tool, pry the battery from the front panel until there is room to peel it off with your hand.
-  The battery is stuck on to the front panel with adhesive tape, so don't be afraid to use slight force when removing it.

The battery is now free from the device and can be replaced. To reassemble your device, follow these instructions in reverse order.