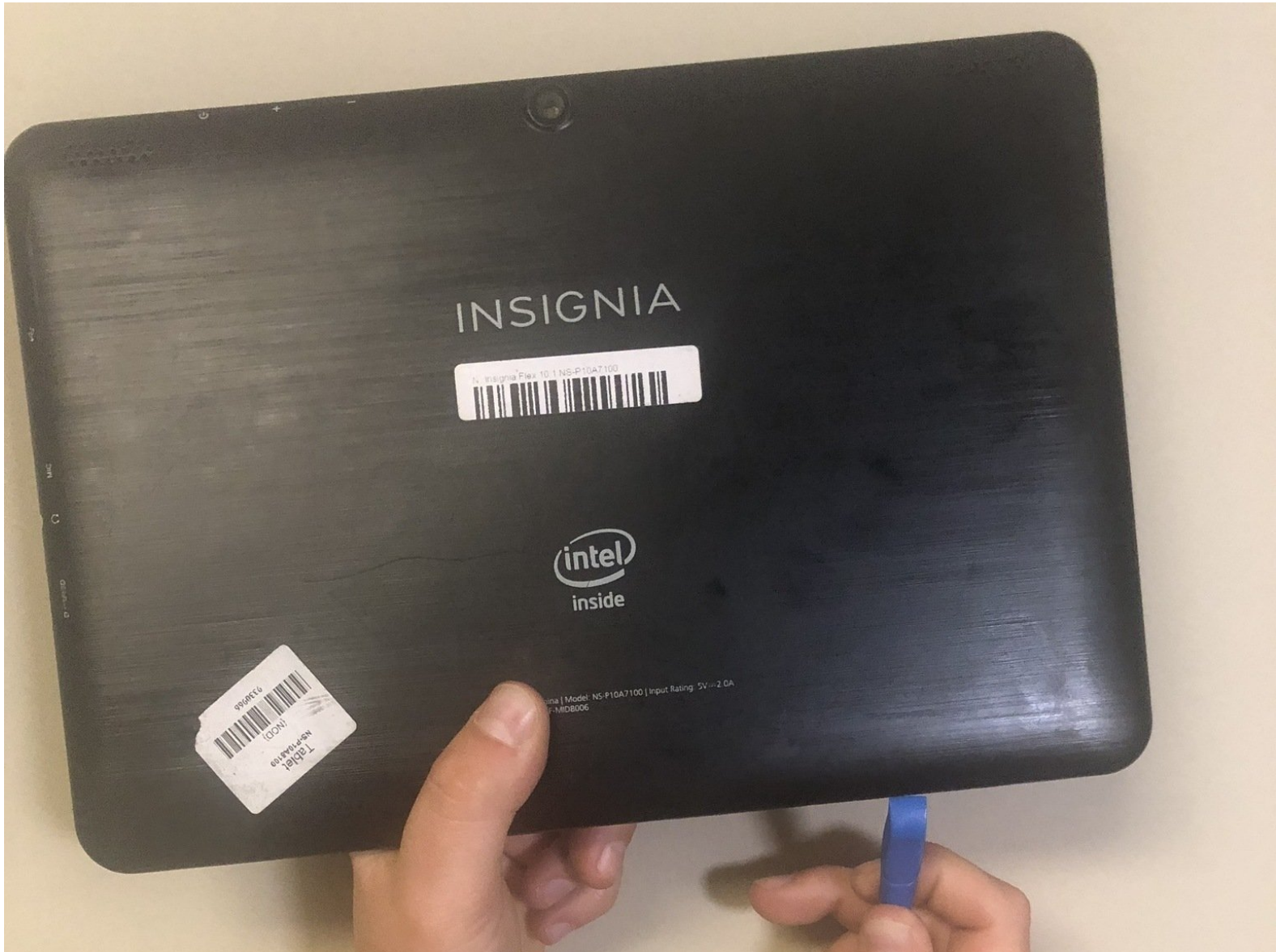




# Insignia Flex 10.1 NS-P10A7100 Battery Replacement

How to replace the battery of an Insignia Flex 10.1 NS-P10A7100.

Written By: Hannah



---

## INTRODUCTION

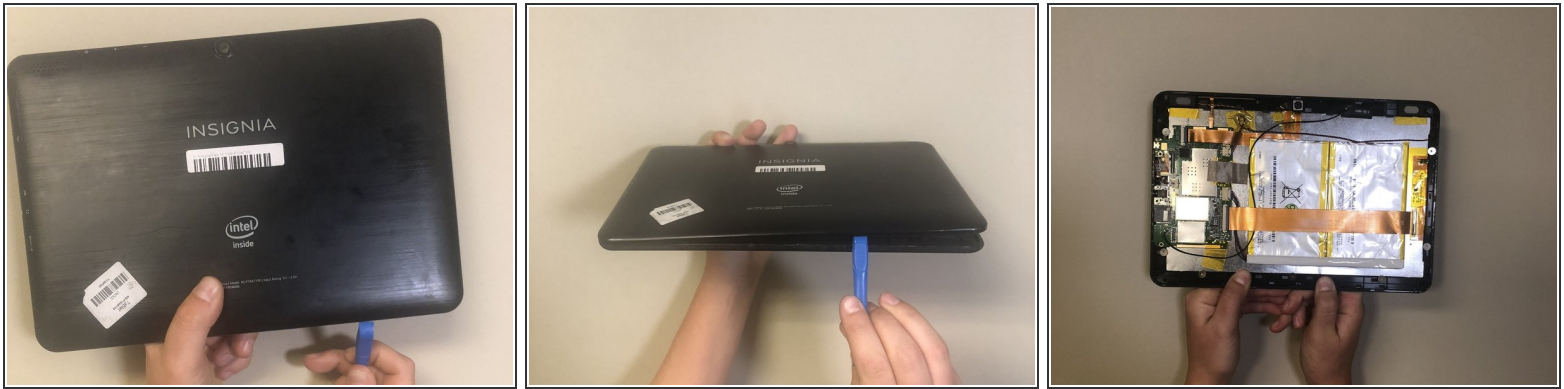
For instructions on how to replace the battery of your Insignia Flex 10.1 NS-P10A7100, follow this guide.



### TOOLS:

- [iFixit Opening Tools](#) (1)
-

## Step 1 — Battery



- Use the blue iFixit opening tool to remove the backing of the device.
- Wedge the tool in the crease between the device backing and screen.

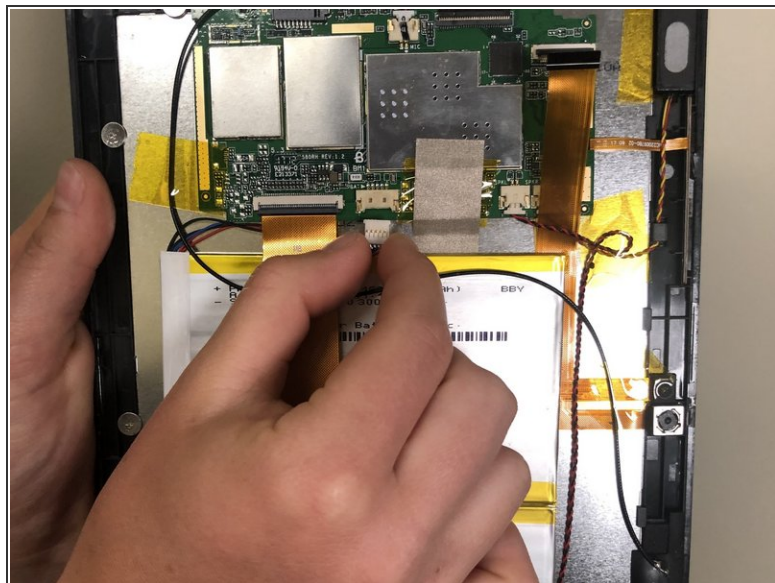
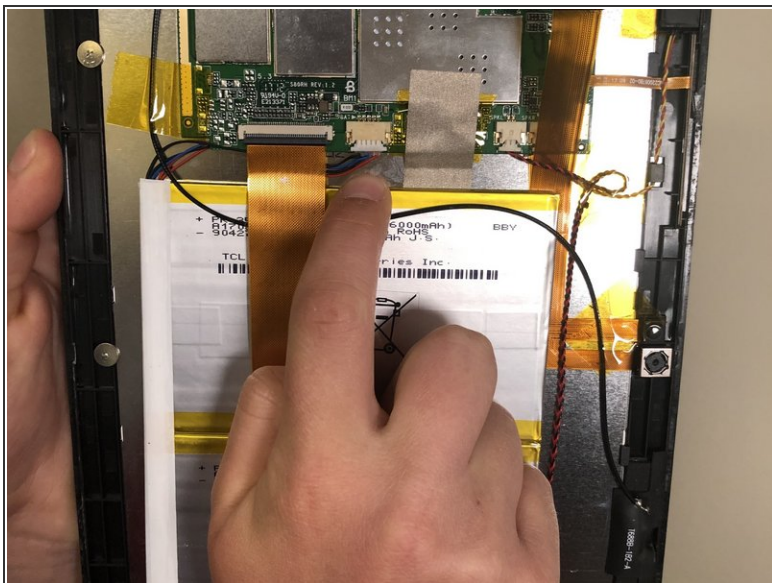
## Step 2




- Disconnect the larger ribbon that runs along the top of the battery and connects to the motherboard.
- Lift up the connector by pulling it up with your fingernail. The ribbon will then be released and you can detach it.

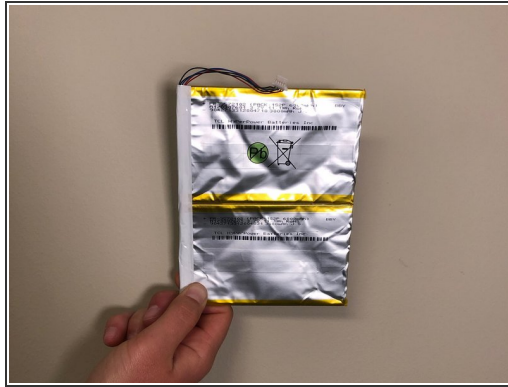
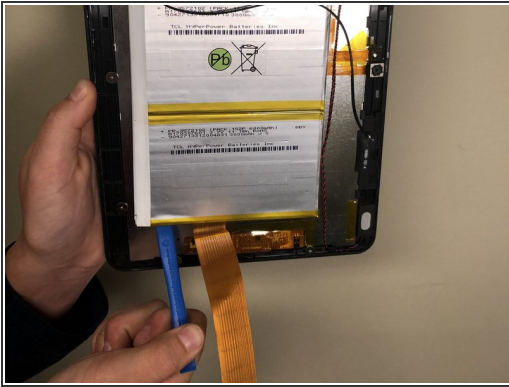



## Step 3




- Detach the five colored wires that connect the battery to the motherboard.
  - Use two fingers and place one on either side of the white plastic encasing the wires.
  - Pull on this piece to release it from the motherboard.
-  Now the battery is detached from the motherboard.

## Step 4



-  The battery is now only connected to the device by the glue on the bottom.

  - Use the iFixit opening tool to wedge the battery off of the device. You will have to use some force to pry the battery off of the device.
-  Now that your battery is removed it is ready for replacement.

To reassemble your device, follow these instructions in reverse order.