



Insignia Flex 10.1 NS-P10W8100 Camera Replacement

How to replace an Insignia Flex 10.1 NS-P10W8100 camera.

Written By: Edgar Rodriguez



INTRODUCTION

Although there are no known hazards with removing the camera, be careful not to damage any small components or permanently damage any connectors.




TOOLS:

- [iFixit Opening Tools](#) (1)
-

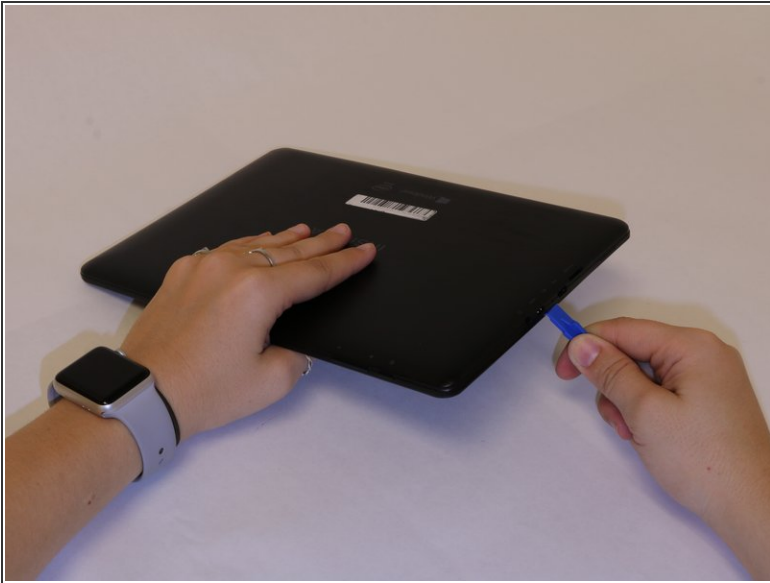
Step 1 — Camera



- Carefully open the laptop and remove the keyboard by disconnecting it.
- Place keyboard to the side as you will not need it.

 Beware of plastic clips on the side of the device.

Step 2




- Lay the screen flat on its surface and use the iFixit opening tool to remove the cover by gently prying the back cover from the screen.
- ⓘ Apply the opening tool to each side to help pry the back cover evenly.
- ⚠ Apply the opening tool to each side which will help pry the back cover evenly.
- ⚠ Do not pry on the bottom side of the device. This is the side across from the camera.

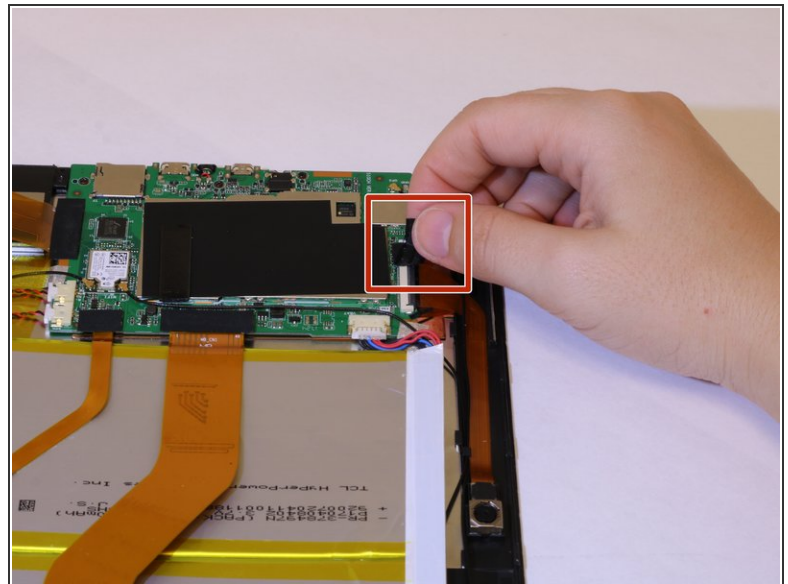
Step 3



- Use your fingers and pry the back cover from the screen. You may need to wiggle the cover a bit to separate the pieces.
- If the back cover does not come off work your fingers around the corners and slowly pry the cover off using your fingers.

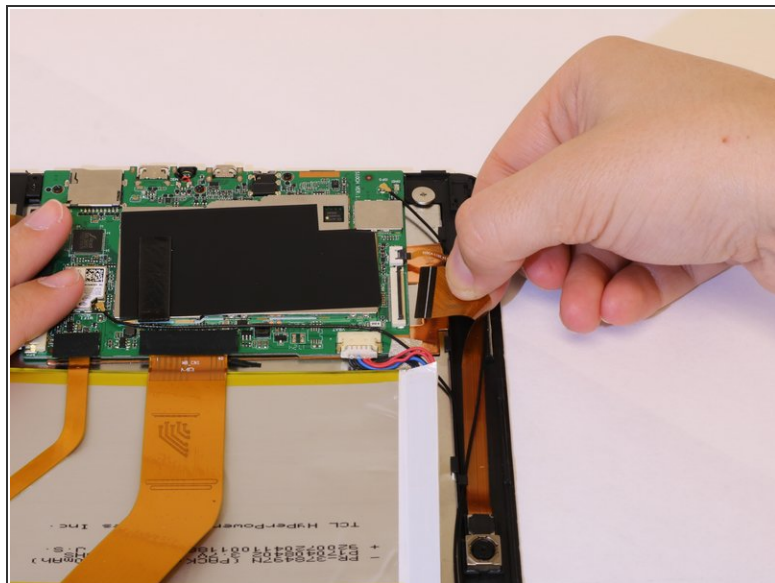
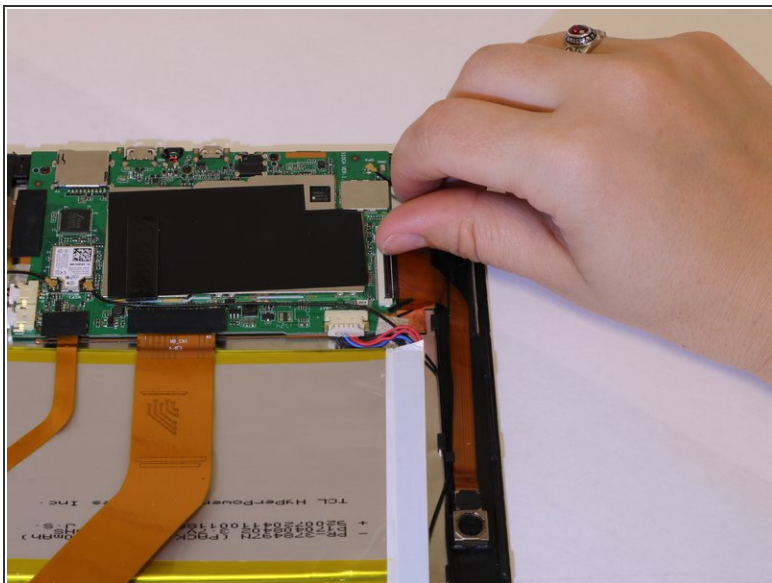
 Be careful with potential sharp edges and any exposed electrical components.

Step 4



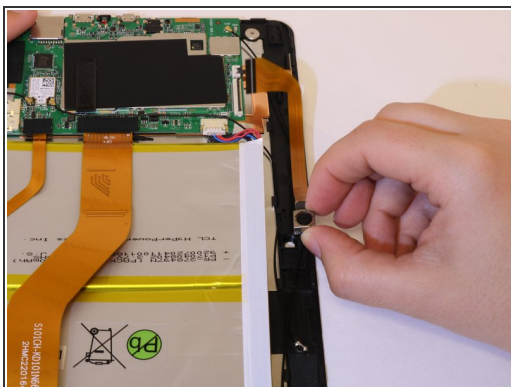
- Carefully remove the yellow tape holding down the camera ribbon connector by pulling it upwards.
- Remove the black tape holding down the camera ribbon connector which is attached to the motherboard.

Step 5



- Disconnect the zero insertion force (ZIF) connector by using your fingernail to flip the small locking flap.
- Disconnect the cable by gently pulling it outward.

Step 6



- Remove the camera by pulling it upward.

To reassemble your device, follow these instructions in reverse order.