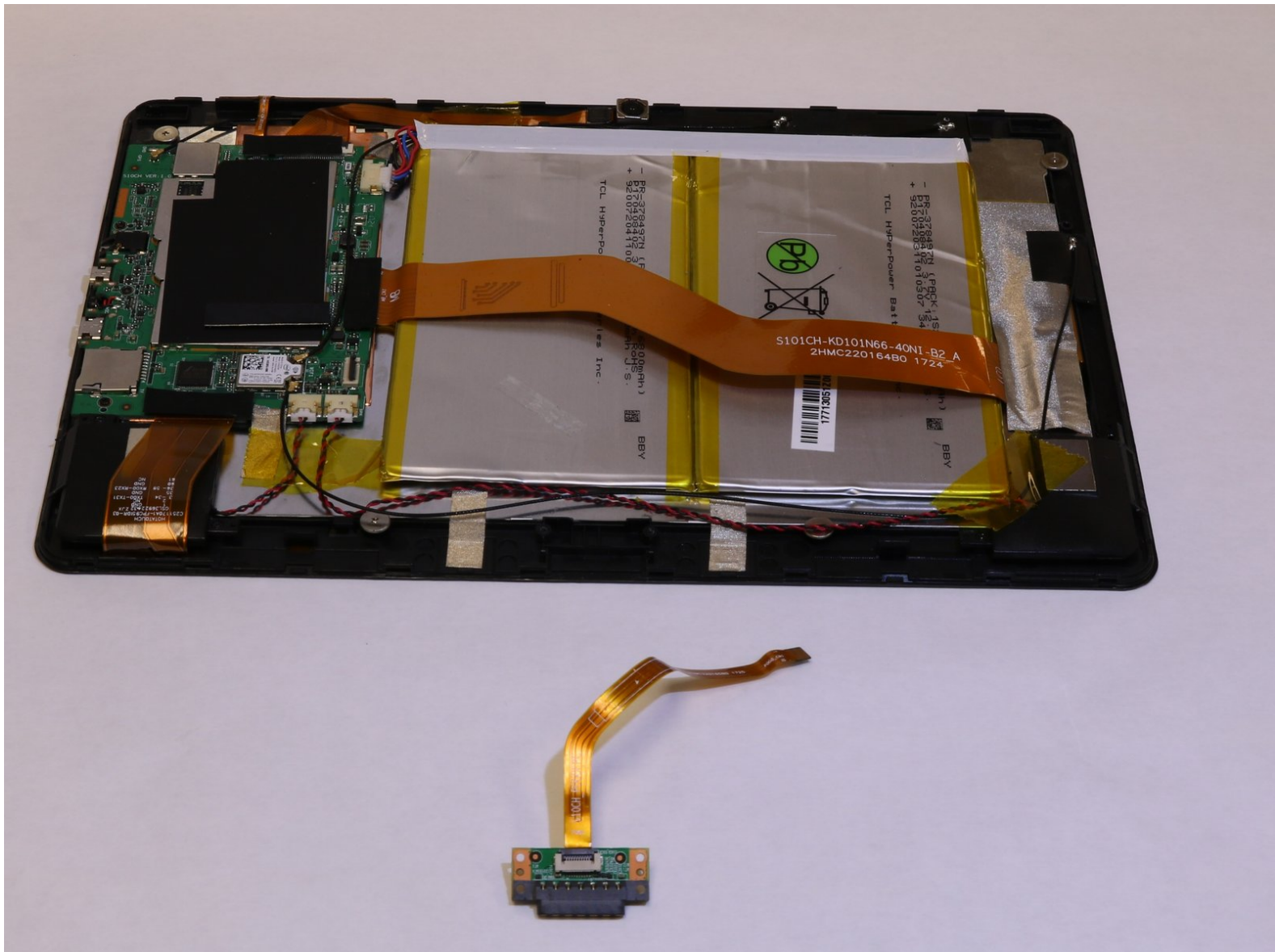




# Insignia Flex 10.1 NS-P10W8100 Keyboard Connector Replacement

How to replace a Insignia Flex 10.1 NS-P10W8100 keyboard.

Written By: Edgar Rodriguez



## INTRODUCTION

The keyboard connector in the Insignia Flex 10.1 NS-P10W8100 is located on a ribbon cable connected to the motherboard. Although there are no major hazards with this replacement guide, be careful not to pull ribbon cables too hard as they can be damaged easily.



### TOOLS:

- [iFixit Opening Tools](#) (1)
- [Phillips #2 Screwdriver](#) (1)




### PARTS:

- [Insignia Flex 10.1 NS-P10W8100 Keyboard Connector](#) (1)

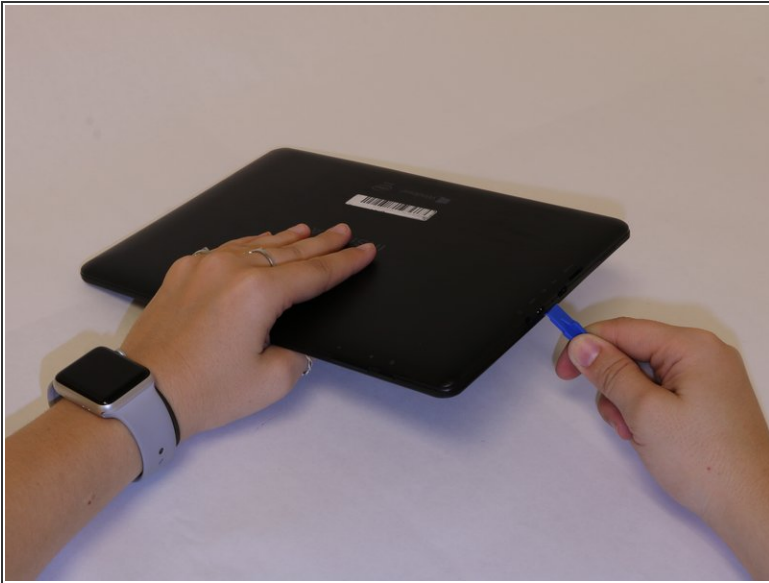
## Step 1 — Keyboard Connector



- Carefully open the laptop and remove the keyboard by disconnecting it.
- Place keyboard to the side as you will not need it.

 Beware of plastic clips on the side of the device.

## Step 2



- Lay the screen flat on its surface and use the iFixit opening tool to remove the cover by gently prying the back cover from the screen.
- ⓘ Apply the opening tool to each side to help pry the back cover evenly.
- ⚠ Apply the opening tool to each side which will help pry the back cover evenly.
- ⚠ Do not pry on the bottom side of the device. This is the side across from the camera.

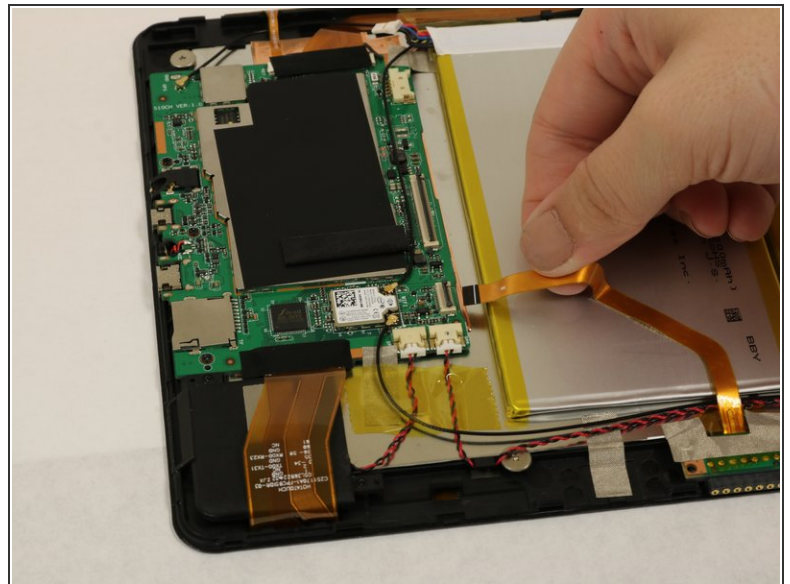
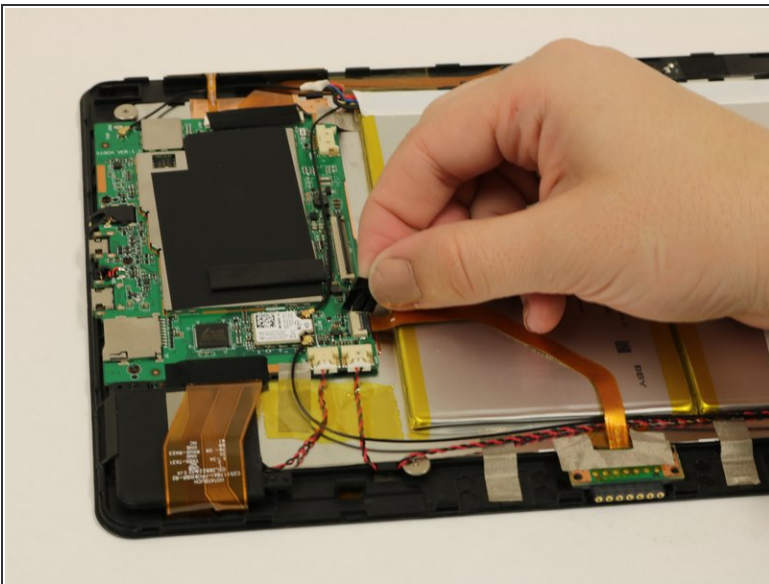


## Step 3



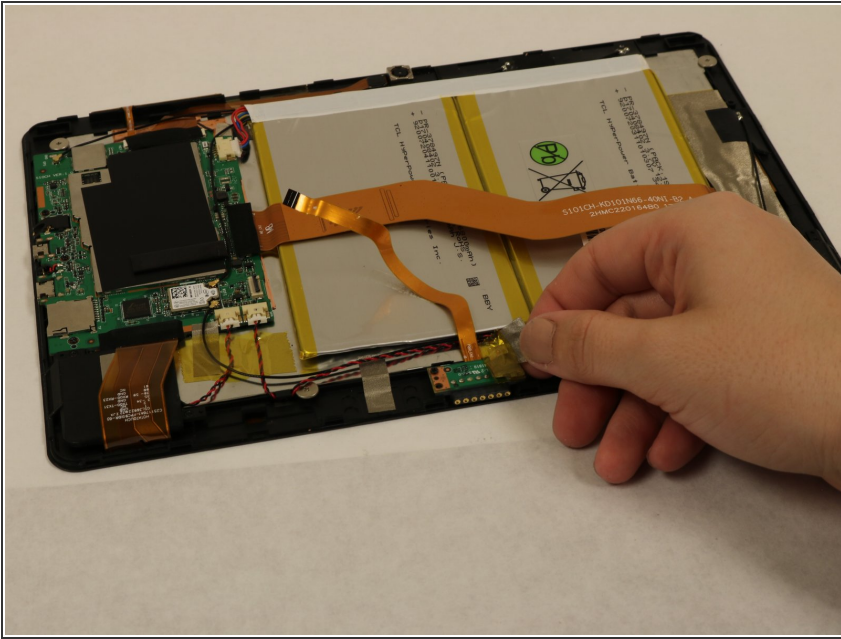
- Use your fingers and pry the back cover from the screen. You may need to wiggle the cover a bit to separate the pieces.
  - If the back cover does not come off work your fingers around the corners and slowly pry the cover off.
- ⚠ Be careful with potential sharp edges and any exposed electrical components.

## Step 4



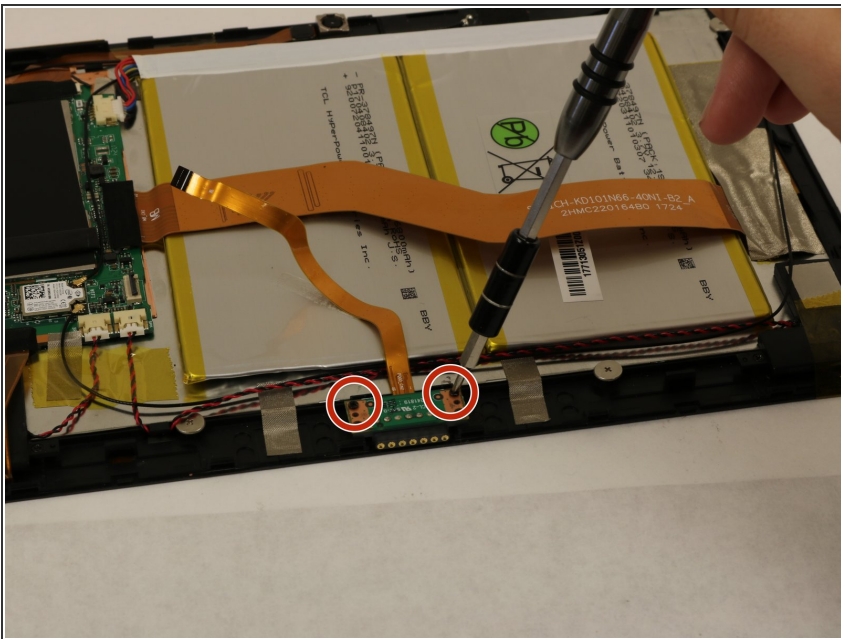
- Use your fingers to remove the tape holding down the zero insertion force (ZIF) connector ribbon attached to the keyboard.
- Use your fingernails to flip the small locking flap. Then, you can safely pull the cable out.

## Step 5



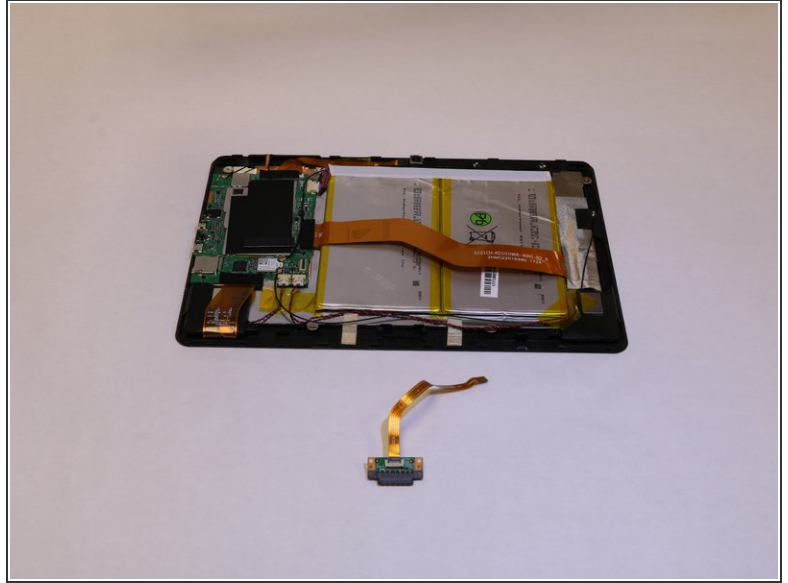
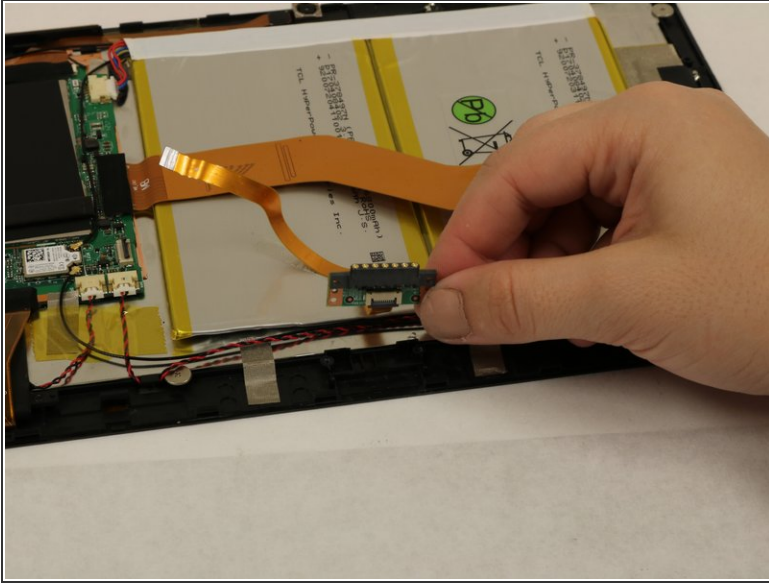
- Pull back the yellow tape holding down the keyboard connector.

## Step 6



- Remove the two 4 mm screws using a Phillips #2 screwdriver.

## Step 7



- Remove the connector by lifting it upward.

To reassemble your device, follow these instructions in reverse order.