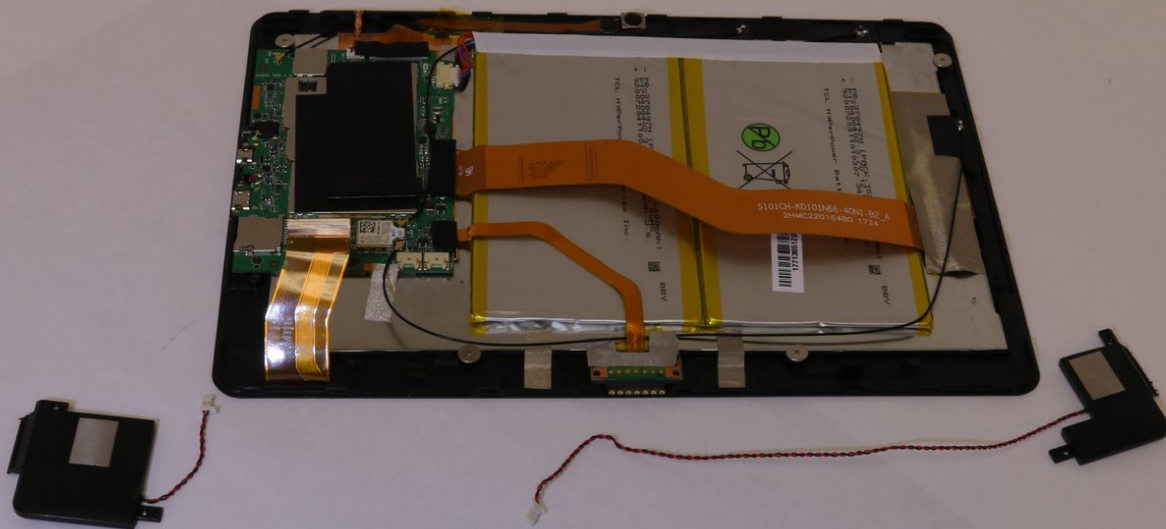




Insignia Flex 10.1 NS-P10W8100 Speaker Replacement

How to replace Insignia Flex 10.1 NS-P10W8100 speakers.

Written By: Edgar Rodriguez



INTRODUCTION

The Insignia Flex 10.1 NS-P10W8100 left speaker is located under a ZIF connectors from the motherboard. Although the ZIF connector does not connect to the speaker, it is good practice to remove the ZIF connector so the speaker will not damage it.



TOOLS:

- [iFixit Opening Tools](#) (1)
 - [Phillips #2 Screwdriver](#) (1)
-

Step 1 — Speakers



- Carefully open the laptop and remove the keyboard by disconnecting it.
- Place keyboard to the side as you will not need it.

⚠ Beware of plastic clips on the side of the device.

Step 2



- Lay the screen flat on its surface and use the iFixit opening tool to remove the cover by gently prying the back cover from the screen.
- ⓘ Apply the opening tool to the edge closest to the screen.
- ⚠ Apply the opening tool to each side which will help pry the back cover evenly.

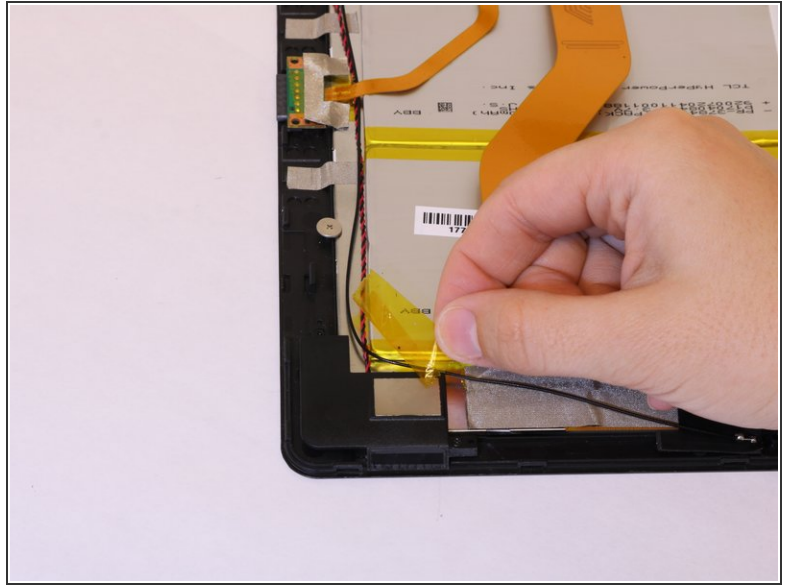
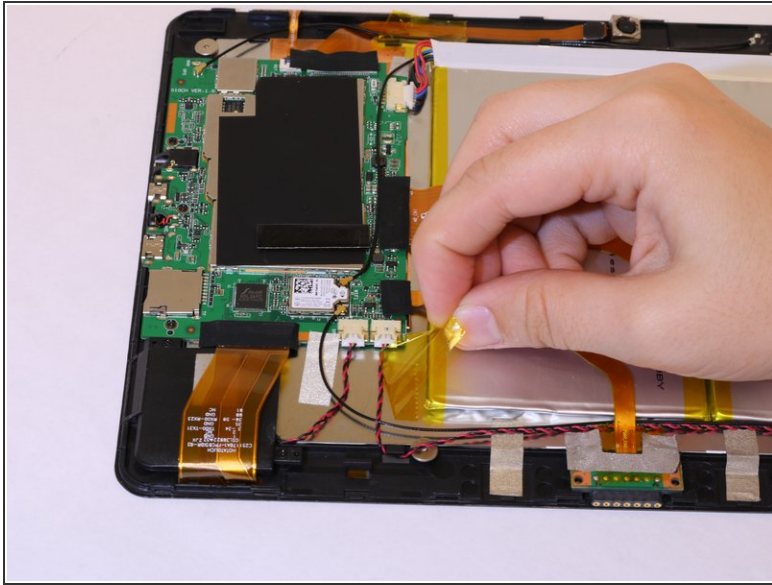
⚠ Do not pry on the bottom side of the device. This is the side across from the camera.

Step 3



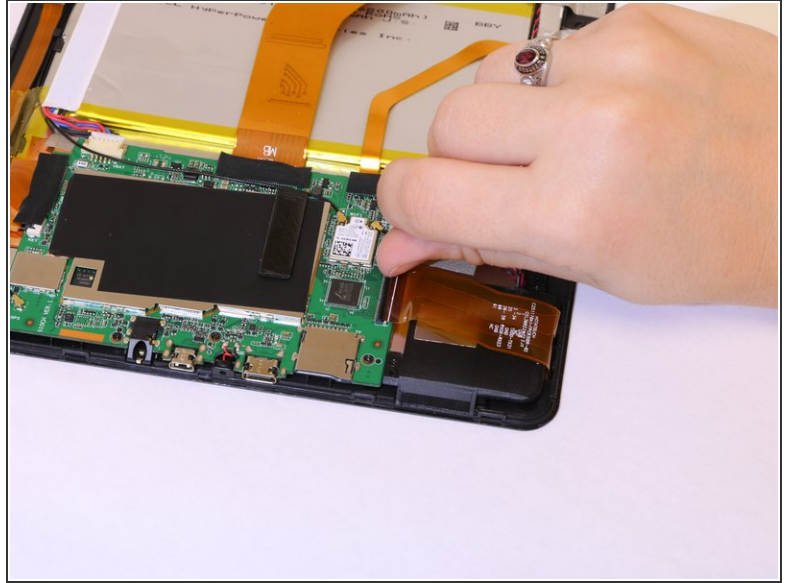
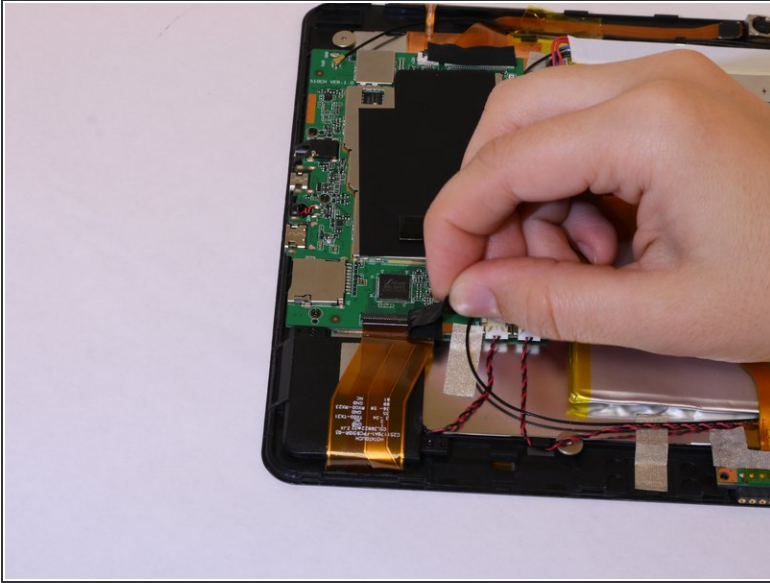
- Use your fingers and pry the back cover from the screen. You may need to wiggle the cover a bit to separate the pieces.
 - If the back cover does not come off work your fingers around the corners and slowly pry the cover off.
- ⚠ Be careful with potential sharp edges and any exposed electrical components.

Step 4



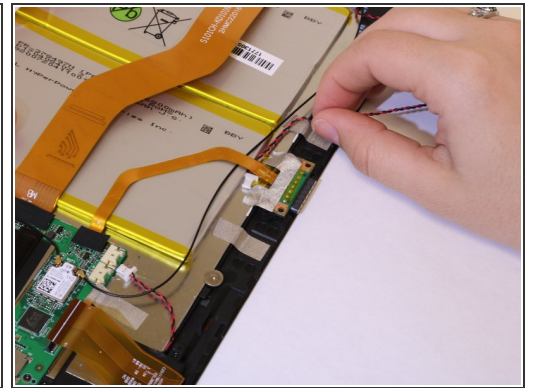
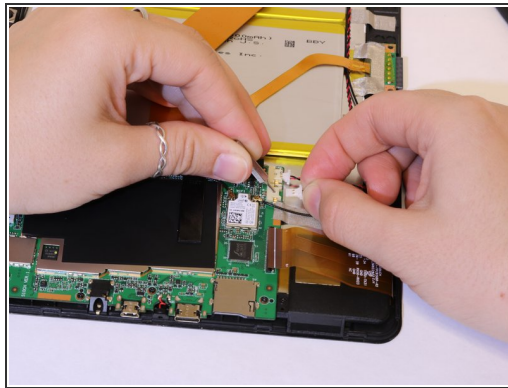
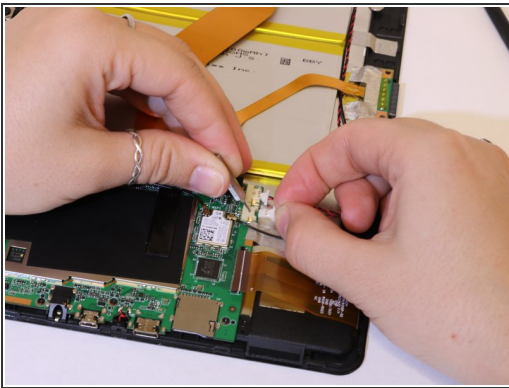
- Using a fingernail, gently pull back on the yellow tape holding the speaker wire in place.
 - Looking on the right side of the device remove the second piece of tape the same way.
- i** Try to place the the tape in a location with little dust for later when reinstalling the tape.

Step 5



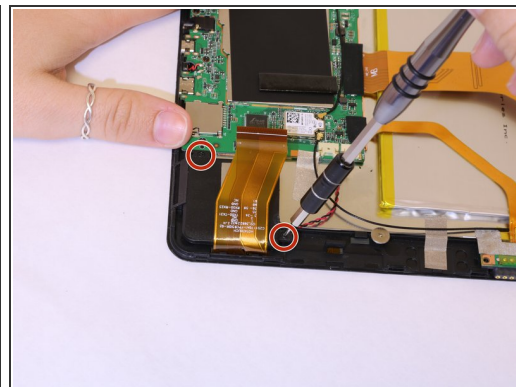
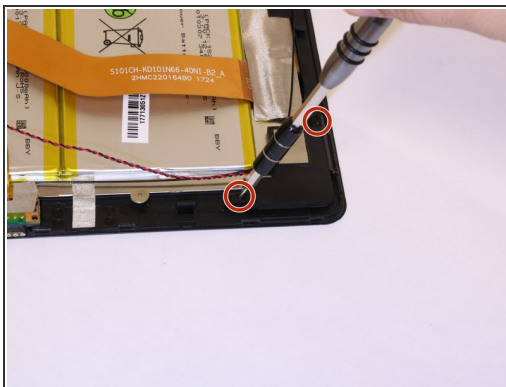
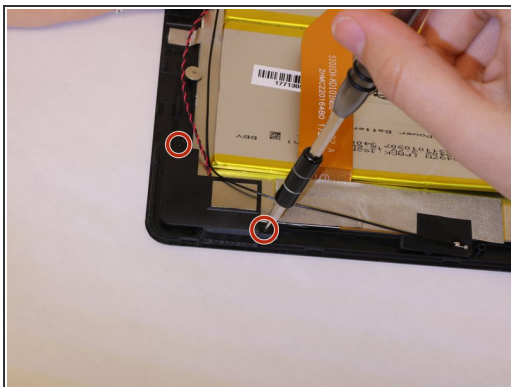
- Remove the black tape covering the ribbon connector.
- Then use a fingernail to lift up the black edge on top of the ribbon connector.

Step 6



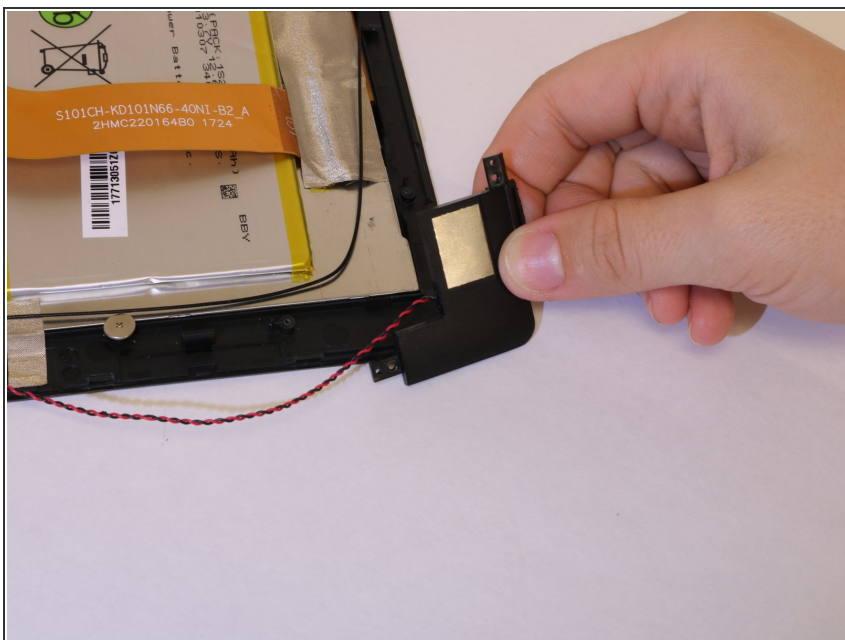
- Gently pull on the speaker wire connector from the motherboard.
 - Then continue to slide the cable gently to clear it from other components.
 - The longer speaker wire has to be removed from under the smaller ribbon wire connected to the keyboard connector.
- i** You may need to use the 0.8 tip tool to press down on the connector if it is not removing easily.

Step 7



- Using a Phillips #2 screwdriver, remove the two 4 mm screws holding the speakers in place.

Step 8



- Remove the speakers from the device.
- ⓘ Be sure to watch the speaker wires as they may snag on other items.

To reassemble your device, follow these instructions in reverse order.